

100
0 10
Millimetres

DO NOT SCALE

SAFETY, HEALTH AND ENVIRONMENTAL INFORMATION

In addition to the hazards/risks normally associated with the types of work detailed on this drawing, note the following:

CONSTRUCTION
BURIED SERVICES INCLUDING POSSIBILITY OF UNCHARTED SERVICES - REFER TO SERVICES PLANS AND USE CABLE AVOIDANCE TOOLS BEFORE DIGGING.
POTENTIAL FOR POCKETS OF BURIED CONTAMINATION INCLUDING ASBESTOS CONTAINING MATERIALS.
POSSIBILITY OF UNEXPLODED ORDNANCE - KEEP WATCH DURING GROUND WORKS.
IF IN DOUBT, STOP WORK AND ASK.

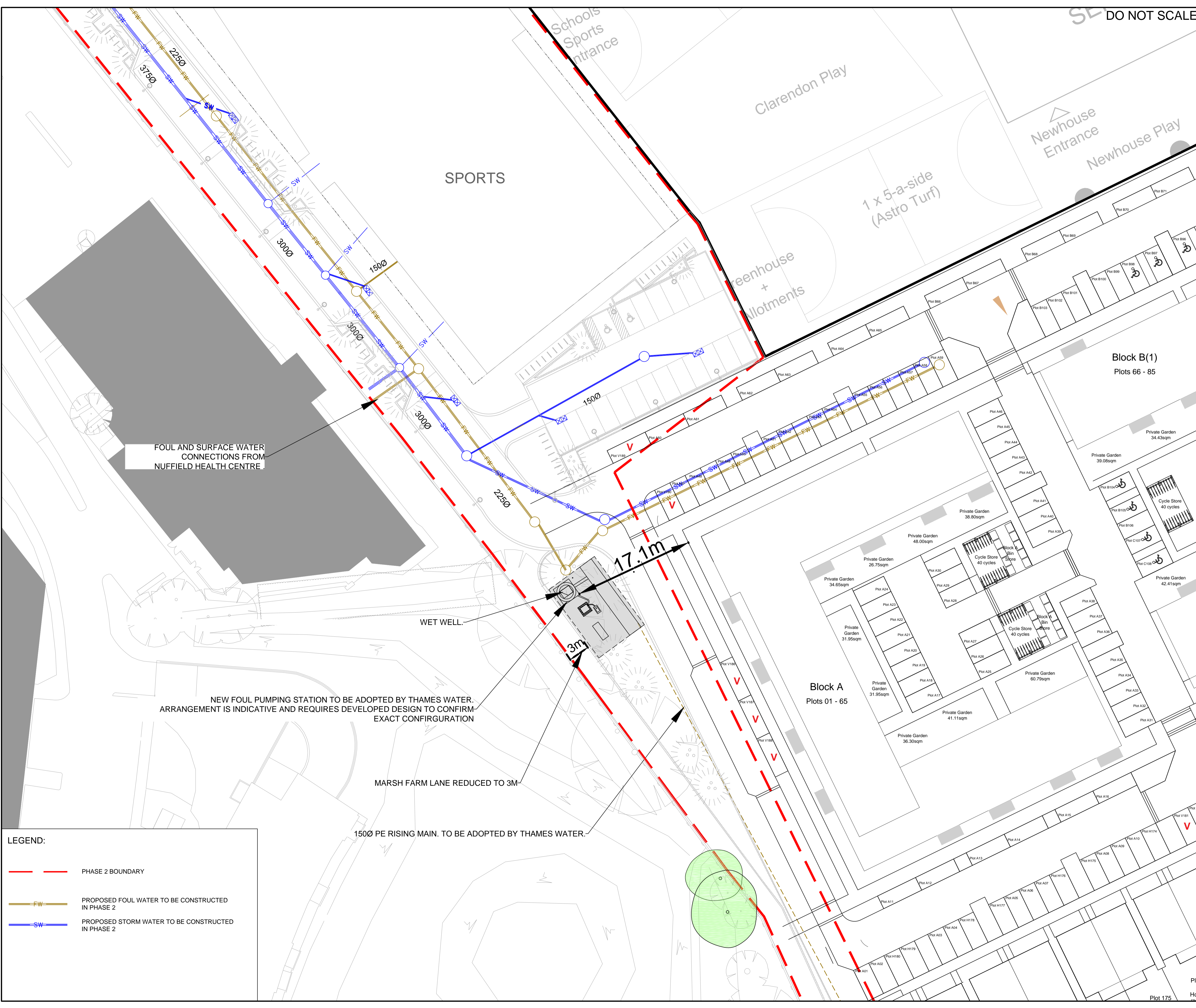
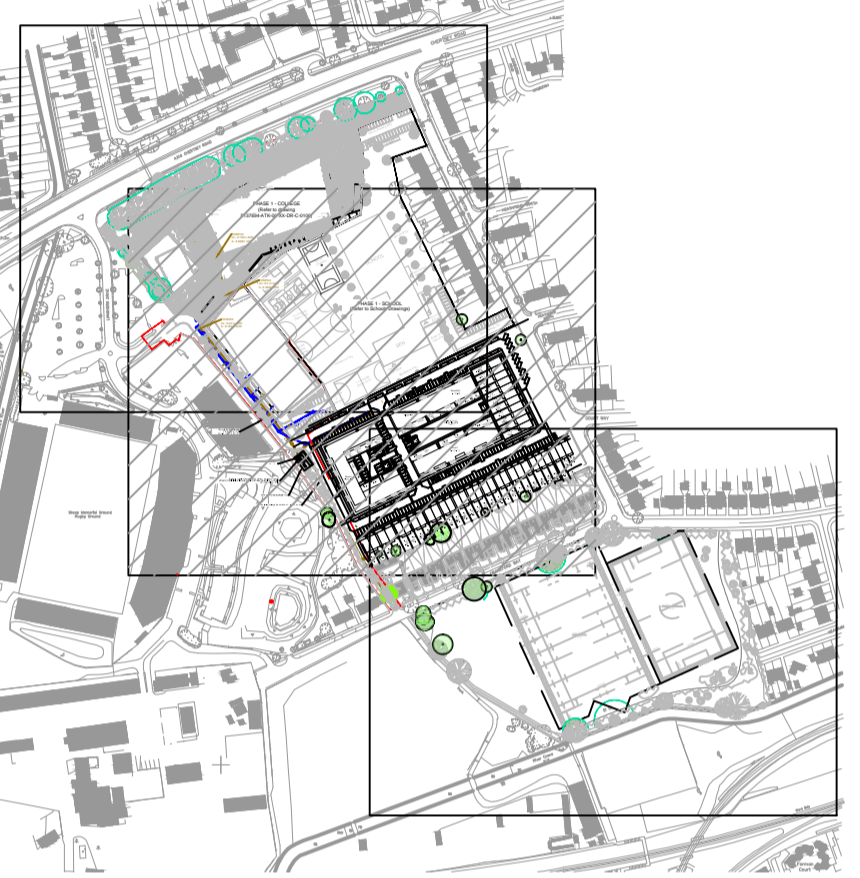
MAINTENANCE/CLEANING
MULTIPLE BURIED SERVICES - CONSULT SERVICES PLANS, USE CABLE AVOIDANCE TOOLS AND FOLLOW RAMS WHEN EXCAVATING.
IF IN DOUBT, STOP WORK AND ASK.

DECOMMISSIONING/DEMOLITION
MULTIPLE BURIED SERVICES - CONSULT SERVICES PLANS, HOST UTILITY COMPANIES AND USE CABLE AVOIDANCE TOOLS BEFORE EXCAVATING.
IF IN DOUBT, STOP WORK AND ASK.

It is assumed that all works will be carried out by a competent contractor working, where appropriate, to an approved method statement

GENERAL NOTES:
1. FOR ALL GENERAL AND SERVICES NOTES REFER TO DRAWING 5137894-ATK-00-XX-DR-C-0310.

KEY PLAN:



FOUL AND SURFACE WATER CONNECTIONS FROM NUFFIELD HEALTH CENTRE

WET WELL

NEW FOUL PUMPING STATION TO BE ADOPTED BY THAMES WATER. ARRANGEMENT IS INDICATIVE AND REQUIRES DEVELOPED DESIGN TO CONFIRM EXACT CONFIGURATION

MARSH FARM LANE REDUCED TO 3M

1500 PE RISING MAIN. TO BE ADOPTED BY THAMES WATER.

LEGEND:

- PHASE 2 BOUNDARY
- PROPOSED FOUL WATER TO BE CONSTRUCTED IN PHASE 2
- PROPOSED STORM WATER TO BE CONSTRUCTED IN PHASE 2

P1.1	17/07/17	FOR INFORMATION	GS	JT	GC
P1	12/07/17	FOR INFORMATION	EH	JT	GC
Rev.	Date	Description	By	Chk'd	App'd

FOR INFORMATION S2

ATKINS Euston Tower
286 Euston Road
London
NW1 3AT

Tel: +44 (0)20 7121 2000
Fax: +44 (0)20 7121 2111
www.atkinsglobal.com

Copyright © Atkins Limited (2015)

Richmond upon Thames College

Project Title
RICHMOND UPON THAMES COLLEGE REDEVELOPMENT

Drawing Title
PHASE 2 ADOPTABLE PUMPING STATION CONFIGURATION

Scale	1:250	Designed	AST	Drawn	AY	Checked	JT	Authorised	GC	
Original Size	A1	Date	11/04/2017	Date	11/04/2017	Date	11/04/2017	Date	11/04/2017	
Drawing Number	5137894-ATK-00-XX-SK-C-0012								Revision	P1.1

100
0 10
Millimetres

DO NOT SCALE
AUGUST 2017 UPDATE

NEW CONNECTION TO THAMES WATER SW SEWER
PROPOSED CONTRIBUTING FW CATCHMENT:
PHASE 1 COLLEGE
PHASE 2 STEM/SPORTS
NUFFIELD HEALTH CENTRE
PHASE 3 TECH HUB
PHASE 3(1) RESIDENTIAL
PHASE 3(2) RESIDENTIAL
Proposed Q = 10 l/s

EXISTING CONNECTIONS TO THAMES WATER FW SEWER
PROPOSED CONTRIBUTING FW CATCHMENT:
PHASE 3(1) RESIDENTIAL
Proposed Q = 6.2 l/s per connection

EXISTING CONNECTION TO THAMES WATER FW SEWER
PROPOSED CONTRIBUTING FW CATCHMENT:
PHASE 1 COLLEGE
PHASE 2 STEM/SPORTS
NUFFIELD HEALTH CENTRE
PHASE 3 TECH HUB
PHASE 3(2) RESIDENTIAL
Existing Q = 100.6 l/s
Proposed Q = 77 l/s

LEGEND:

- PHASE 2 BOUNDARY
- PROPOSED FOUL WATER TO BE CONSTRUCTED IN PHASE 2
- PROPOSED STORM WATER TO BE CONSTRUCTED IN PHASE 2

SAFETY, HEALTH AND ENVIRONMENTAL INFORMATION

In addition to the hazards/risks normally associated with the types of work detailed on this drawing, note the following:

CONSTRUCTION
BURIED SERVICES INCLUDING POSSIBILITY OF UNCHARTED SERVICES - REFER TO SERVICES PLANS AND USE CABLE AVOIDANCE TOOLS BEFORE DIGGING.
POTENTIAL FOR POCKETS OF BURIED CONTAMINATION INCLUDING ASBESTOS CONTAINING MATERIALS.
POSSIBILITY OF UNEXPLODED ORDNANCE - KEEP WATCH DURING GROUND WORKS.
IF IN DOUBT, STOP WORK AND ASK.

MAINTENANCE/CLEANING
MULTIPLE BURIED SERVICES - CONSULT SERVICES PLANS, USE CABLE AVOIDANCE TOOLS AND FOLLOW RAMS WHEN EXCAVATING.
IF IN DOUBT, STOP WORK AND ASK.

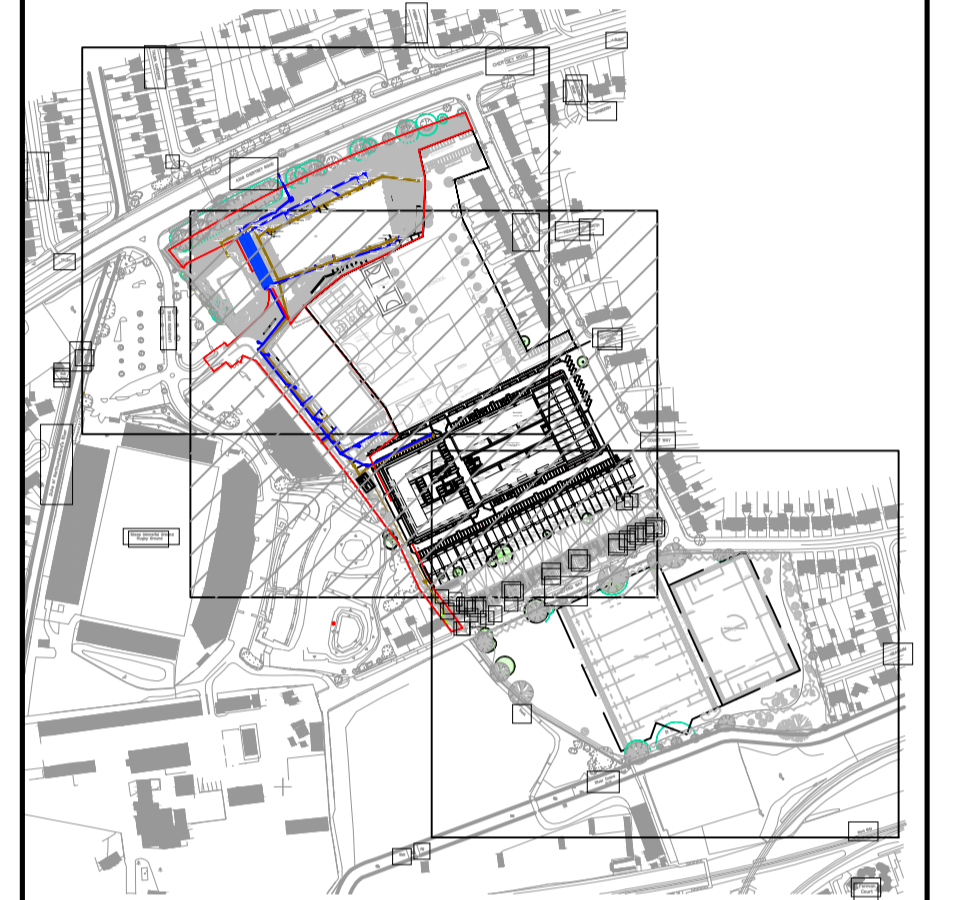
DECOMMISSIONING/DEMOLITION
MULTIPLE BURIED SERVICES - CONSULT SERVICES PLANS, HOST UTILITY COMPANIES AND USE CABLE AVOIDANCE TOOLS BEFORE EXCAVATING.
IF IN DOUBT, STOP WORK AND ASK.

It is assumed that all works will be carried out by a competent contractor working, where appropriate, to an approved method statement

GENERAL NOTES:

1. FOR ALL GENERAL AND SERVICES NOTES REFER TO DRAWING 5137894-ATK-00-XX-DR-C-0310.

KEY PLAN:



Rev.	Date	Description	By	Chk'd	App'd
P1	15/08/2017	FOR INFORMATION	EH	JT	GC

Drawing Status: **FOR INFORMATION** Suitability: **S2**

ATKINS
Euston Tower
286 Euston Road
London
NW1 3AT
Tel: +44 (0)20 7121 2000
Fax: +44 (0)20 7121 2111
www.atkinsglobal.com
Copyright © Atkins Limited (2015)



Project Title: **RICHMOND UPON THAMES COLLEGE REDEVELOPMENT**

Drawing Title: **SITE WIDE FOUL AND SURFACE WATER NETWORK**

Scale	Designed	Drawn	Checked	Authorised
1:250	AST	AY	JT	GC
Original Size	Date	Date	Date	Date
A1	11/04/2017	11/04/2017	11/04/2017	11/04/2017
Drawing Number				Revision
5137894-ATK-00-XX-SK-C-0014				P1.0



MLM.
Group

T +44 1473 231 100
A North Kiln, Felaw Maltings
46 Felaw Street
Ipswich, IP2 8PN

www.mlmgroupp.com