



# RICHMOND COLLEGE REDEVELOPMENT

Landscape Statement - For Planning

30.11.18

Issued in support of the Reserved Matters Planning Application for the Richmond upon Thames College Redevelopment.

The following document should be read in conjunction with BPTW Architects Design & Access Statement and Planning Drawings.

**1: LANDSCAPE PROPOSALS**

1.0 Landscape plan

**2: CHARACTER AREAS**

2.0 West Graden

2.1 Central Garden

2.2 East Garden

2.3 Ecological Corridor

2.4 Egerton Road Amenity Space

**3: TREE INFORMATION**

3.0 Tree Survey Information

3.1 Tree Strategy

3.2 Tree Canopy Sizes

**4: SOFTWORKS PROPOSALS**

4.0 Roof plan: Biodiverse roofs

4.1 Planting strategy plan

4.2 Planting images

4.3 Maintenance strategy

**5: BOUNDARIES**

5.0 Boundary Strategy

**6: Play**

6.0 Play Strategy



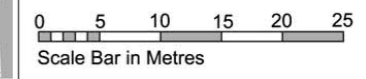


**CHARACTER AREAS AND KEY FEATURES:**

- 1 **Egerton Road Amenity Area:**  
Existing trees and open sunny grass areas retained, infill trees planted to create succession. Existing low boundary wall retained, new railing above.
- 2 **Egerton Road Entrance:**  
Existing brick pier entrance retained to form a distinctive pedestrian entrance, protected by bollards on the development side, to prevent parking. The main vehicular gates would be locked in the closed position, the pedestrian gates locked open.
- 3 **West Garden:**  
Includes 'Gateway' footpath link to the west. The oval lawn and play area create a pocket green, with private patio gardens and planting areas to the perimeter.
- 4 **Central Garden:**  
An important space to move through. The boundary to homezone 3 is envisaged to be quite open, to allow views in. The curved path links to core and bike store entrances, and onwards to the east and west gardens.
- 5 **East Garden:**  
The East gardens is more contained, with boundaries on each side. It's possible that the space is gated off to increase security. The Play Space is themed for toddlers, a natural play approach that includes sensory planting and trains as role play elements.
- 6 **Podiums roof over car parking:**  
The car parking within homezone 2 will be screened by a living roof podium structure and planted screens to garden areas
- 7 **Ecology Corridor:**  
The north boundary forms a 4 to 6m wide buffer to the school. It includes large native tree species, such as Limes, that will in time soften the impact of the 5 storey residential blocks. There are 'gaps' in the tree canopy cover to allow full sun into areas to develop meadow habitats to develop. The boundary is marked with a native hedgerow.
- 8 **Homezone streets**
- 9 **South Road**
- 10 **Parking**
- 11 **Swale:**  
A simple ditch to allow a variation in habitat and a playful element for children to cross and explore.
- 12 **Private gardens or terraces**
- 13 **New vehicular entrance to the site**

EGERTON RD

COU







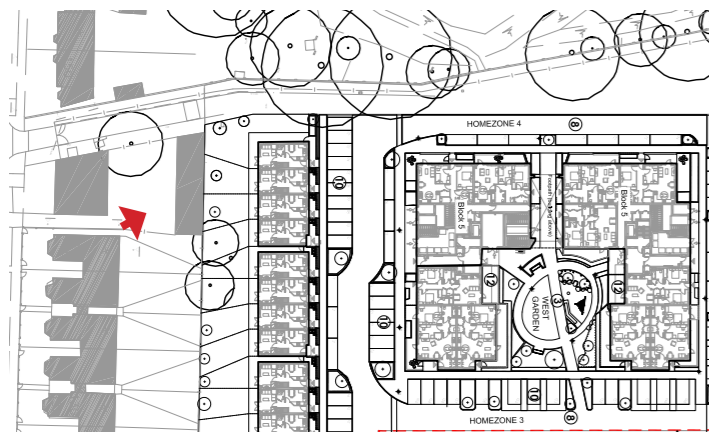
West Garden



The Central Landscape spaces are designed as 3 separate, but connected spaces. Each garden is designed to have a different feel and function, which will provide variation and cater for a range age groups and activities. The building blocks have dual entrances to the cores, which means that residents can use the central space to journey through, on the way to the station or to their car, as well as to access the garden or play spaces. This will ensure a high degree of footfall. The many balconies overlooking provide additional natural surveillance.



West Garden



**West Garden:**

Linking to the Block 5 'Gateway' building, this garden is designed to be well-connected to the recreation opportunities west of the development. Private amenity terraces are setback from the central oval lawn area with areas of hedgerow and defensible planting. Sculptural play elements are provided for children under 5 years to one side of the garden with general amenity grass and seating to the other.