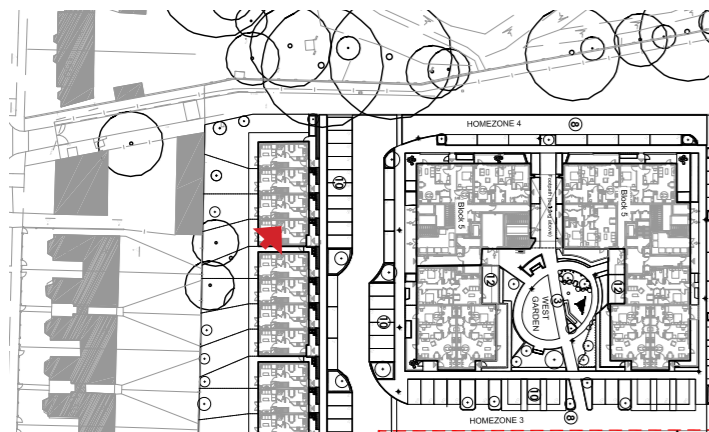




Centre Garden



Central Garden



Central Garden: An important space to move through the boundary to homezone 3 is envisaged to be quite open, to allow views in. The curved path links to core and bike store entrances, and onwards to the east and west gardens. The central space includes the elemental podium car parking proposal. This includes a green roof, to soften the impact of the view of the cars from upper storey windows. Hedge or medium height shrubs are planted around the perimeter to shroud the view of the cars but allow people to view over.