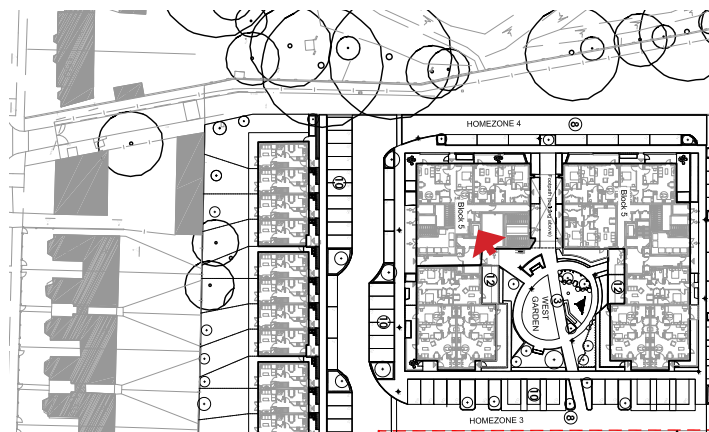




 East Gardens

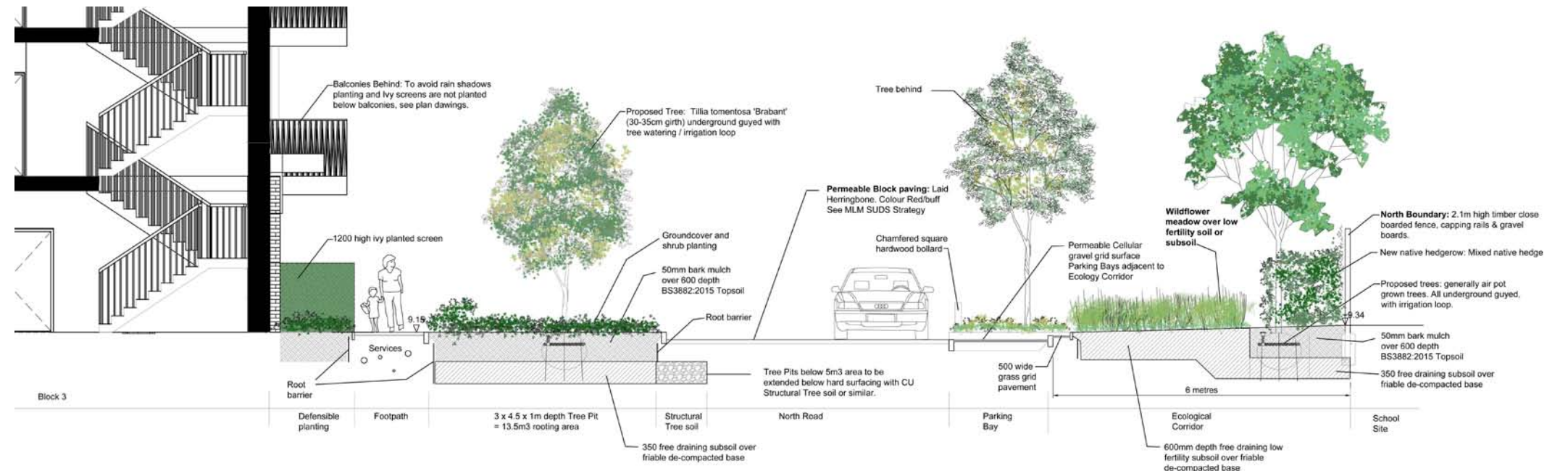
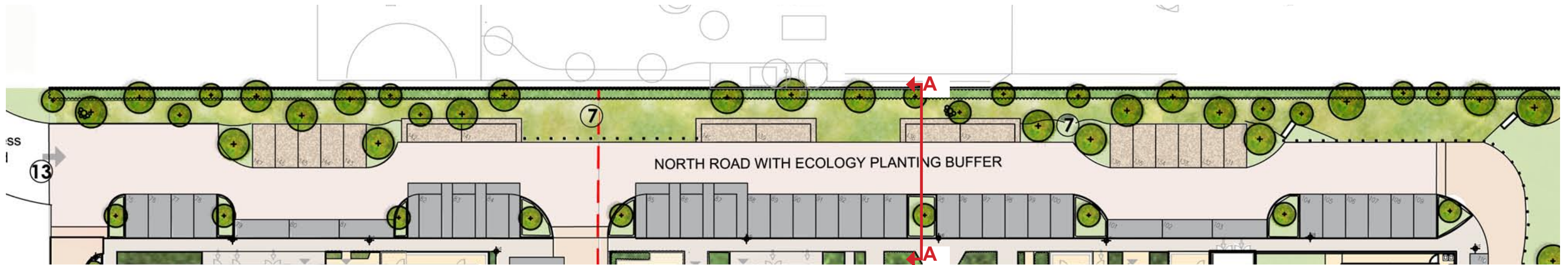


East Garden



**East Garden:** is more contained, with boundaries on each side. It's possible that the space is gated off to increase security. This space could be developed with a greater garden character and could include some raised planters for future residents use.





Section A-A



Native hedgerow



Long meadow grass, with mown grass areas to front.



Enhancement measures such as bird boxes, wood piles

The Ecological Corridor on the north boundary forms a 4 to 6m buffer to the school. It includes selection of native tree species, such as a Limes, that will in time soften the impact of the 5 storey residential blocks, particularly when viewed from the school side. In addition there are trees and green areas proposed within the school site that will add further to this new green corridor. Other features for the ecological corridor include:

- Mixed native hedgerow planting along the boundary
- Long meadow grass areas, planted with 3 different native wildflower mixes, suited to the amount of shade.
- Habitat enhancement measures such as bird boxes and wood piles (for stag beetle habitat).

During the Pre-application process advice was sought from the London Borough Of Richmond regarding Ecological and Arboricultural design considerations. The feedback we received has been incorporated into the above proposals.

This includes:

- Creating more open aspect areas without tree planting within the Ecological corridor, to promote areas for flowering plants.
- Providing small mammal holes in garden boundaries.
- Carefully consider the choice of tree species, anticipated canopy spread over 25 years and tree pit details
- Provide ecological enhancements to biodiverse roof areas.