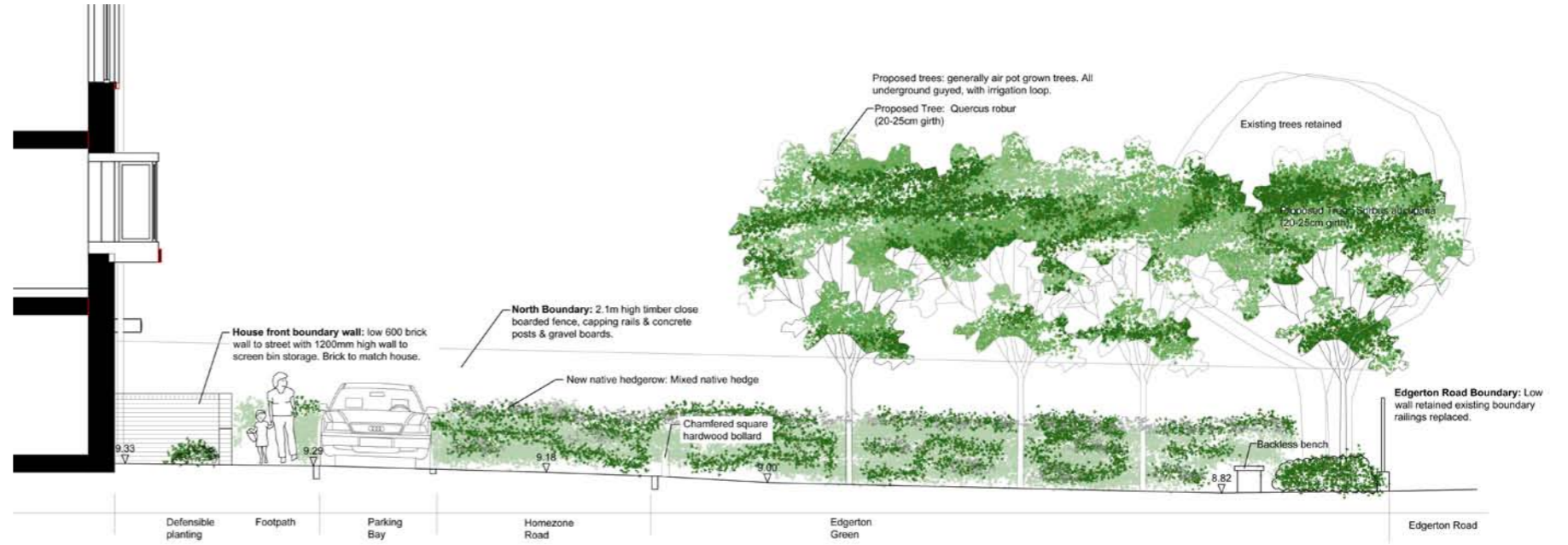
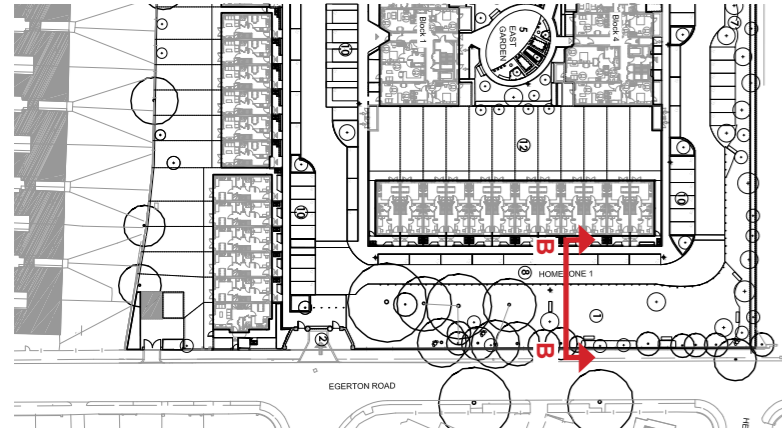


CHARACTER AREAS: EGERTON ROAD GREEN- RICHMOND COLLEGE

Location Plan



Section B-B



Sketch View - proposed boundary treatment to Egerton Road.



Sketch View - proposed boundary treatment to Egerton Road.

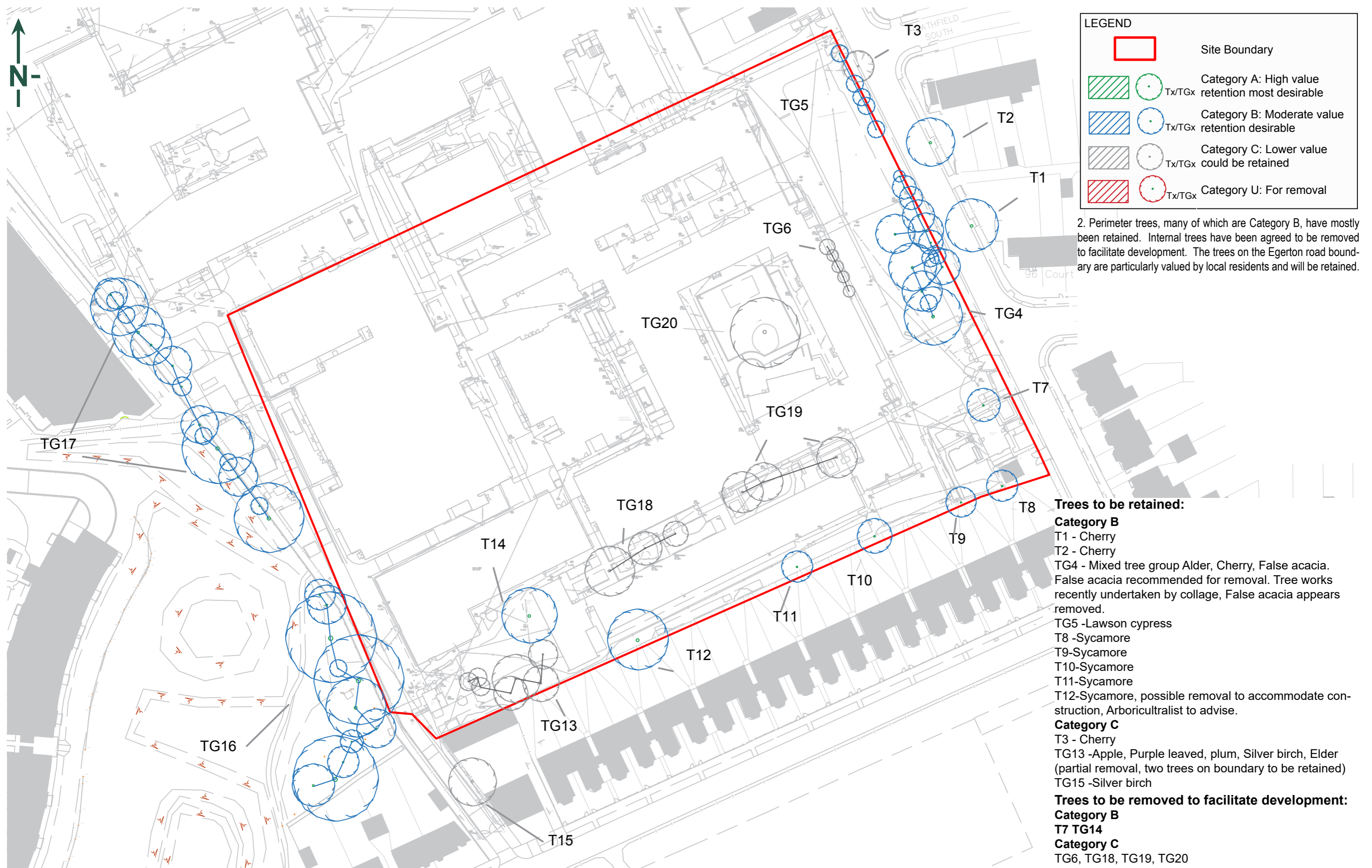


Maintain sunny open aspect of existing area



Existing brick entrance piers to be retained and incorporated into proposed boundary treatment along Egerton Road

The amenity space is an important feature for the development and adjacent existing residential streets. The existing mature trees will be retained and protected as they provide a prominent green canopy, which creates a natural boundary between Egerton Road and the development. The open aspect of the existing grass amenity area will be maintained, with only key native trees added to create succession and diversity within the tree planting. The space is intended for general amenity use with seating provided in carefully chosen locations. It is anticipated that this space is open for general use by residents and visitors to the development. No play provision is provided in this area, play opportunities are within the more secure and resident focused areas, with the centre of the development. The existing boundary wall to Egerton Road is retained with a new railing to the top. The prominent brick pier gateposts that form the existing college entrance will also be retained and incorporated in the proposed boundary treatment to Egerton Road.



# TREE STRATEGY PLAN - RICHMOND COLLEGE

Proposed new trees: 130

Tree removals: 20 . Please refer to DeltaSimons Arboricultural Method Statement

Area of gates and trees within school proposals

Black dashed outline shows anticipated canopy spread of trees at 25 years from planting.

## Ecological Corridor Trees (min 4m wide):

(20-25cm 4.5-5.5m high at planting)

● *Acer campestre* (10x7m at 25 yrs)

● *Betula pendula* (12x8m at 25 yrs)

● *Tilia cordata* (10x6m at 25 yrs)

● *Quercus robur* (12x8m at 25 yrs)

(20-25cm & 18-20cm girth)

● *Crataegus monogyna* (6m x 4m at 25 yrs)

● *Sorbus aucuparia* (7m x 4m at 25 yrs)

● *Prunus avium* (12m x 7m at 25 yrs)

● *Prunus padus* 'Watereri' (12m x 8m at 25 yrs)

● Mixed Native Hedge

## Street Trees:

(30-35cm girth, 5.5-6.5m high at planting)

● *Sorbus torminalis* (7m x 4m at 25 yrs)

● *Betula utilis* var. *jacquemontii* 'Grayswood Ghost' (9mx4m at 25 yrs)

(20-25cm girth, 4.5-5.5m high at planting)

● *Acer compestre* 'Streetwise' (7mx3m at 25 yrs)

● *Pyrus calleryana* 'Chanticleer' (8mx3m at 25 yrs)

## Amenity & Courtyard Trees:

(30-35cm girth 5.5-6.5m high at planting)

● *Liquidambar styraciflua* or *Liriodendron tulipifera* 'Aureomarginata' (10mx5m at 25 yrs)

(20-25cm girth 4.5-5.5m high at planting)

● *Amelanchier arborea* 'Robin Hill' (8m x 2.5m at 25 yrs)

● *Amelanchier lamarckii* (4mx3m at 25 yrs)

● *Cornus kousa* China Girl (4mx 3m at 25 yrs)

● *Prunus padus* 'Albertii' (7m x 3.5m at 25 yrs)

● *Prunus serrula* (6m x 4m at 25 yrs)

## Small Garden Ornamental Trees:

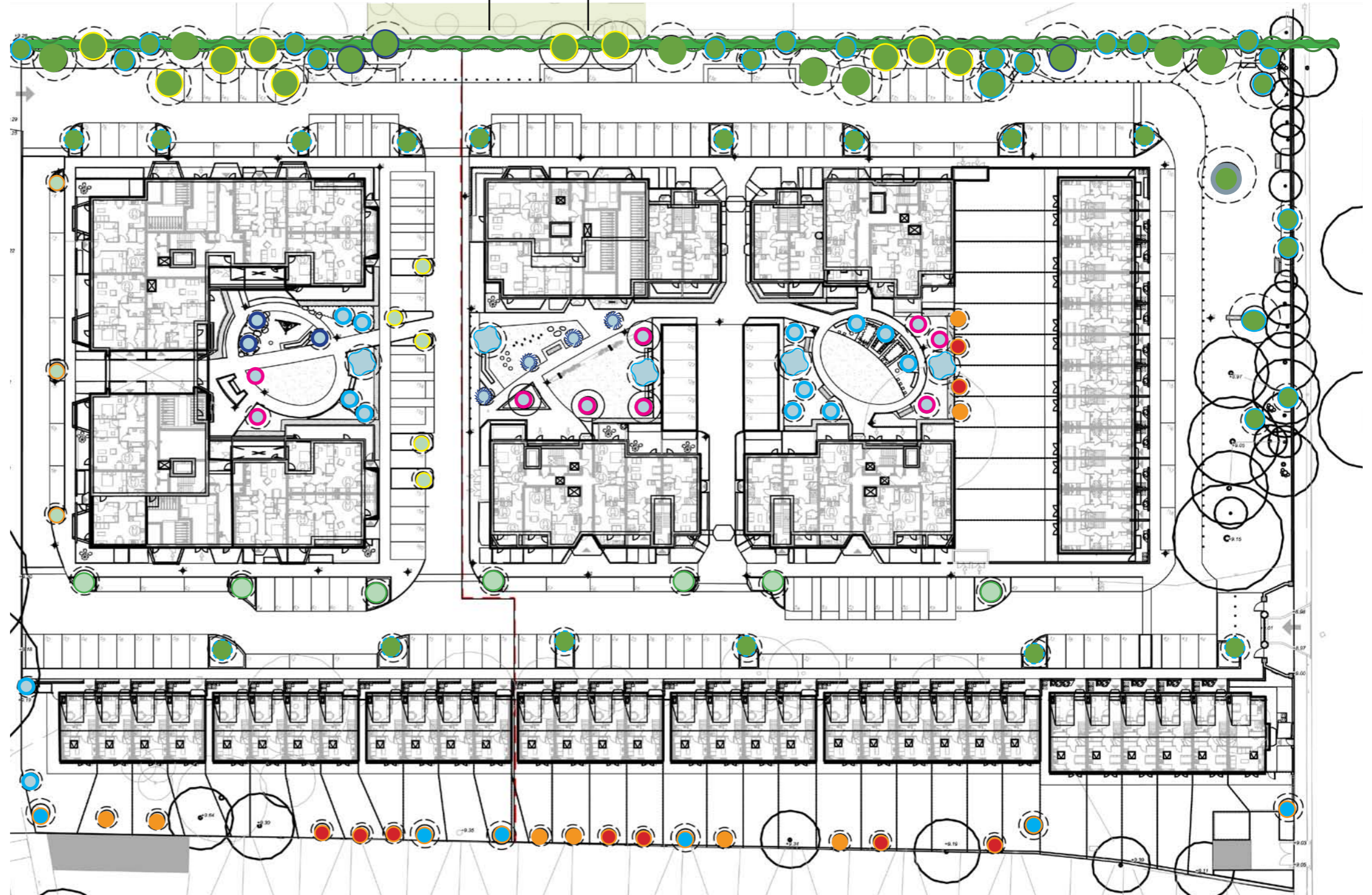
(16-18cm girth, 4.0-4.5m high at planting)

● *Betula pendula* 'Youngii' (4x4m at 25yrs)

● *Malus rudolph*, (5m x 3m at 25 yrs)

● *Sorbus* 'Golden Wonder' (7m x 3m at 25 yrs)

○ Retain existing boundary trees, subject to arboricultural recommendations



Through the pre-application process tree planting proposals have been modified in line with arboricultural comment, the principle points are set out below:

- The quantity of proposed trees has been reduced to 130 Trees.
- The diversity of Tree Species was generally liked; species thought to be inappropriate have been replaced, EG: Lime trees in parking area have been replaced with Sorbus species.
- Tree spacing have been carefully considered and now includes the 25 year canopy spread, as recommended by Hillier's.
- Trees within the ecology corridor have been re-spaced to create meadow areas, with the species leaf size also being considered, to allow meadow grass areas to be free from excessive overshadowing from the tree canopies above.
- The ditch within the ecology corridor has been removed to give a larger area of meadow habitat, following comment from the ecology officer.
- A strategy of planting trees closely, to give a high level of greening at planting, wasn't liked and has been omitted.
- Soil Volumes: The minimum soil rooting area has been increased to 5m<sup>3</sup>. However, only 7% (9 trees within parking areas) have this minimum requirement, the remaining trees have well over this minimum. All trees are planted in planting beds or lawn areas where the rooting area is often very extensive, within the shared landscape soiled areas.
- Detailing for rooting space below roads is shown on section drawing: IA-421-LS-P01. This utilises structural tree soil that offers both rooting and loading capability.
- The trees within the central gardens are generally small garden varieties and will work well within lawn and planted areas.
- Timber bollards are used generally to protect the landscaping from parking ingress.
- Existing Trees. Generally perimeter trees, are retained. The Tree Group with the existing lawn adjacent to Egerton Road has been retained in full. The existing large specimen Sycamore (Tree 12) has been removed to enhance the garden character as requested. Please refer to DeltaSimons Arboricultural Method Statement for full details on the existing trees to be retained.

**Ecological Corridor Trees (min 4m wide):**  
(20-25cm 4.5-5.5m high at planting)



Acer campestre



Tilia cordata



Betula pendula



Quercus robur

**Street Trees:**  
(30-35cm girth, 5.5-6.5m high at planting)



Sorbus torminalis



Betula utilis var. jacquemontii  
'Grayswood Ghost'

**Ecological Corridor Trees (min 4m wide):**  
(20-25cm -18-20cm 4.5-5.5m high at planting)



Crataegus monogyna



Sorbus aucuparia



Prunus padus 'Watereri'



Prunus avium

**Street Trees:**  
(20-25cm girth, 4.5-5.5m high at planting)



Acer campestre 'Streetwise'



Pyrus calleryana 'Chanticleer'

**Amenity & Courtyard Trees:**  
(30-35cm girth 5.5-6.5m high at planting)



Liquidambar styraciflua

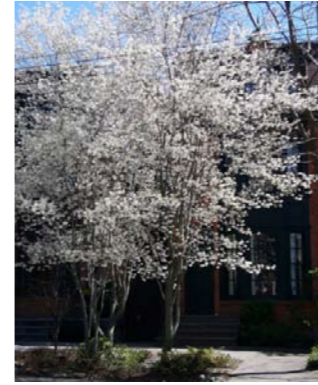
**Amenity & Courtyard Trees:**  
(20-25cm girth 4.5-5.5m high at planting)



Amelanchier arborea 'Robin Hill'



Prunus padus 'Albertii'



Amelanchier lamarckii



Cornus kousa 'China Girl'

**Small Garden Ornamental Trees:**  
(16-18cm girth, 4.0-4.5m high at planting)



Malus rudolph,



Prunus Shimidsu Sakura



Prunus 'Amanogawa'



Betula pendula 'Youngii'



Tree canopy at planting



Approx tree canopy 25 years after planting

The developing Tree Strategy tests the design for the 25 years on. The above plan showing the larger broad leaf trees within the ecological corridor and street areas have grown strongly, whereas the central courtyard trees have remained at a more 'garden' scale.