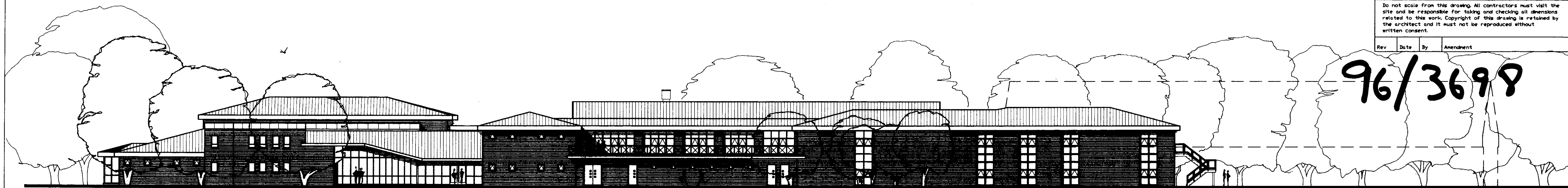


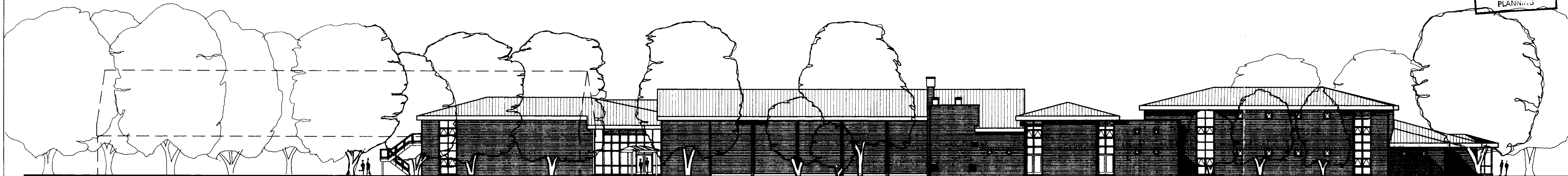
Project No	Drawing No	Revision
9688	P 09	
Do not scale from this drawing. All contractors must visit the site and be responsible for taking and checking all dimensions related to this work. Copyright of this drawing is retained by the architect and it must not be reproduced without written consent.		
Rev	Date	By
		Amendment

96/3698



NORTH ELEVATION

LONDON BOROUGH OF RICHMOND UPON RIVERS
Planning and Client Services
PLANNING



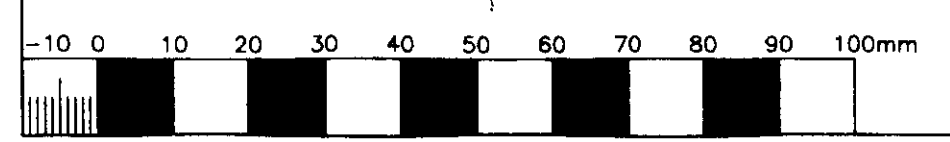
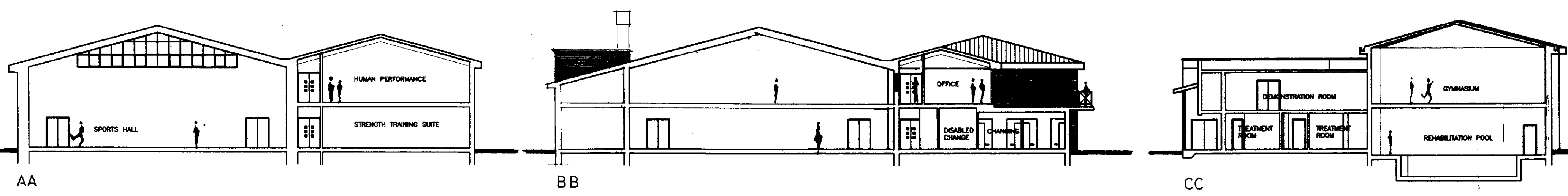
SOUTH ELEVATION



EAST ELEVATION

WEST ELEVATION

- MATERIALS**
- ROOF: COLOUR COATED PROFILED STEEL
MERLIN GREY TO MATCH EXISTING
 - SOFFIT & FASCIA: COLOUR COATED PRESSED STEEL
MERLIN GREY TO MATCH EXISTING
 - WALLS: YELLOW STOCK BRICKWORK TO MATCH EXISTING
WITH FEATURE BRICKWORK BANDING IN CONTRASTING COLOUR
 - WINDOWS/CURTAIN WALLING: DOUBLE GLAZED IN
POLYESTER POWDER COATED ALUMINIUM FRAME
 - EXTERNAL DOORS: PAINT QUALITY SOLID CORE
DOORS IN HW FRAME
 - STONE PAINTED RENDER BAND AND CONCRETE
COPING TO SPORTS INJURY CLINIC
 - GLAZED COVERED WALKWAY ON PAINTED STEELWORK FRAME
 - PAINTED STEELWORK: BALUSTRADE TO TERRACE
AND EMERGENCY EXIT STAIR



ASH DESIGN CONSULTANTS LTD		
STUDIO 2 THE CENTRE NEW ASH GREEN LONGFIELD KENT DA3 8JJ		
Telephone (01474) 879484. Facsimile (01474) 879707		
Client: THE GOVERNORS OF ST. MARY'S UNIVERSITY COLLEGE		
Project: COACHING AND PERFORMANCE DEVELOPMENT CENTRE		
Drawing: PROPOSED ELEVATIONS & SECTIONS		
Date: JUNE 97	Scale: 1:200	Drawn by: JM
Project no. Computer ref. 9688	Drawing No P 09	Checked by: GR
		Revision