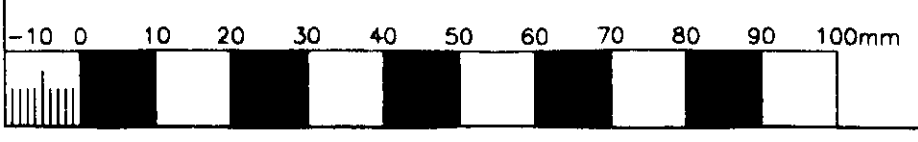
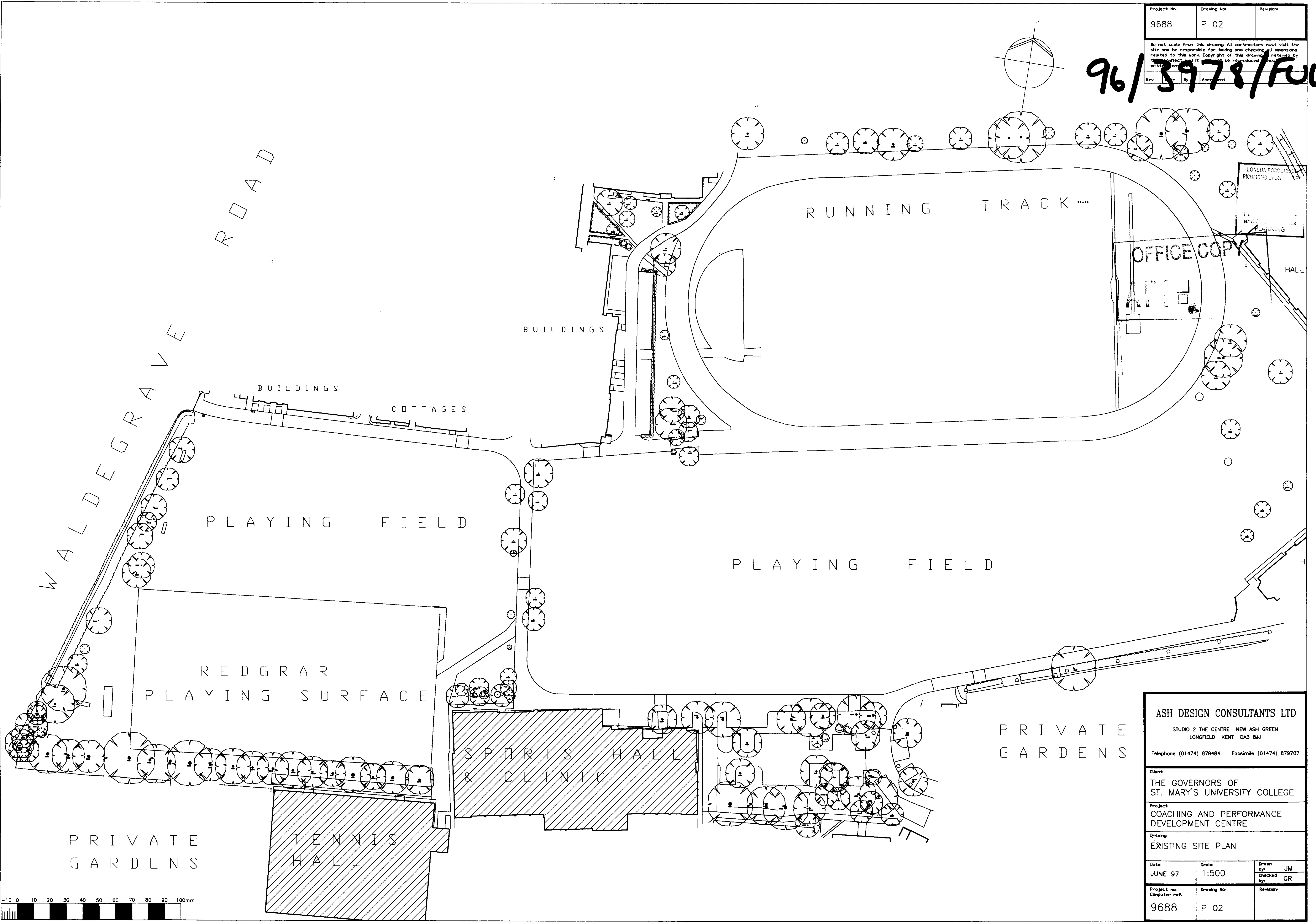


Project No 9688	Drawing No P 02	Revision
Do not scale from this drawing. All contractors must visit the site and be responsible for taking and checking all dimensions related to this work. Copyright of this drawing retained by the architect and it shall not be reproduced without written consent.		
Rev	By	Amendment

96/5978/FUL



ASH DESIGN CONSULTANTS LTD		
STUDIO 2 THE CENTRE NEW ASH GREEN LONGFIELD KENT DA3 8AJ		
Telephone (01474) 879484. Facsimile (01474) 879707		
Client: THE GOVERNORS OF ST. MARY'S UNIVERSITY COLLEGE		
Project: COACHING AND PERFORMANCE DEVELOPMENT CENTRE		
Drawing: EXISTING SITE PLAN		
Date: JUNE 97	Scale: 1:500	Drawn by: JM Checked by: GR
Project no. Computer ref. 9688	Drawing No P 02	Revision