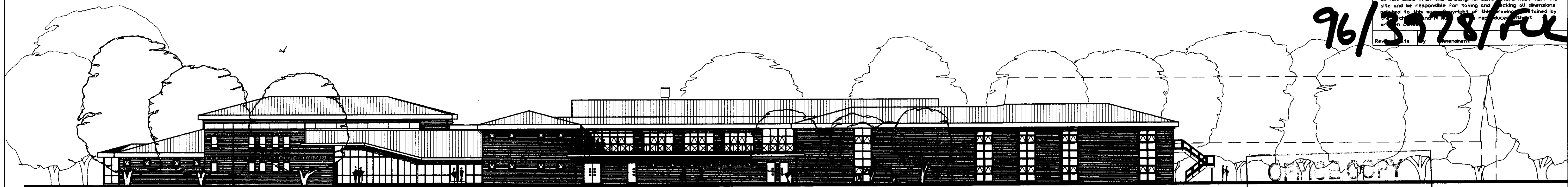


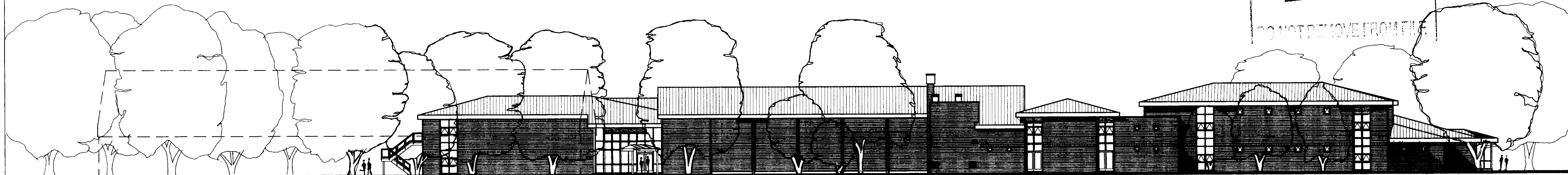
Project No	Drawing No	Revision
9688	P 09	
Do not scale from this drawing. All contractors must visit the site and be responsible for taking and checking all dimensions related to the requirements of the drawings issued by the architect. It is the contractor's responsibility to produce a correct and complete bill of materials. The architect is not responsible for any errors or omissions in the drawings or for any consequences arising therefrom.		
Rev. No	By	Amendment

96/3978/FUL



NORTH ELEVATION

ASH DESIGN CONSULTANTS LTD
 LONDON BROUGH OF RICHMONDE UPON THAMES
 Plans and Sections
 DO NOT REMOVE FROM FILE



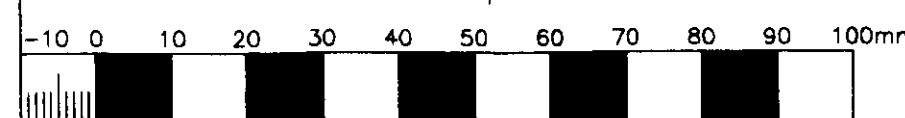
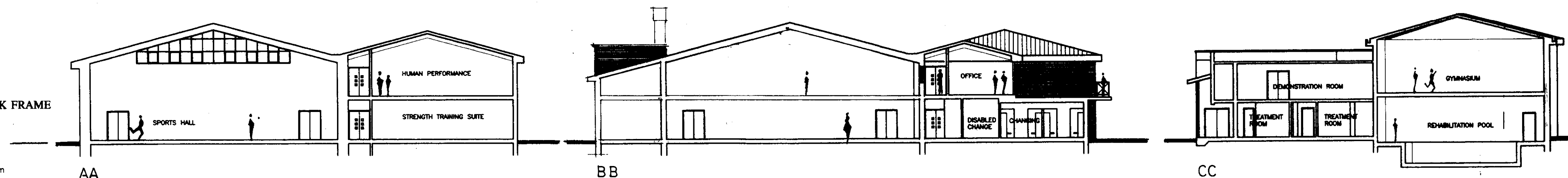
SOUTH ELEVATION



EAST ELEVATION

WEST ELEVATION

- MATERIALS**
- ROOF: COLOUR COATED PROFILED STEEL
MERLIN GREY TO MATCH EXISTING
 - SOFFIT & FASCIA: COLOUR COATED PRESSED STEEL
MERLIN GREY TO MATCH EXISTING
 - WALLS: YELLOW STOCK BRICKWORK TO MATCH EXISTING
WITH FEATURE BRICKWORK BANDING IN CONTRASTING COLOUR
 - WINDOWS/CURTAIN WALLING: DOUBLE GLAZED IN
POLYESTER POWDER COATED ALUMINIUM FRAME
 - EXTERNAL DOORS: PAINT QUALITY SOLID CORE
DOORS IN HW FRAME
 - STONE PAINTED RENDER BAND AND CONCRETE
COPING TO SPORTS INJURY CLINIC
 - GLAZED COVERED WALKWAY ON PAINTED STEELWORK FRAME
 - PAINTED STEELWORK: BALUSTRADE TO TERRACE
AND EMERGENCY EXIT STAIR



ASH DESIGN CONSULTANTS LTD		
STUDIO 2 THE CENTRE NEW ASH GREEN LONGFIELD KENT DA3 8JL		
Telephone (01474) 879484. Facsimile (01474) 879707		
Client: THE GOVERNORS OF ST. MARY'S UNIVERSITY COLLEGE		
Project: COACHING AND PERFORMANCE DEVELOPMENT CENTRE		
Drawing: PROPOSED ELEVATIONS & SECTIONS		
Date: JUNE 97	Scale: 1:200	Drawn by: JM
		Checked by: GR
Project no. Computer ref.:	Drawing No	Revision
9688	P 09	