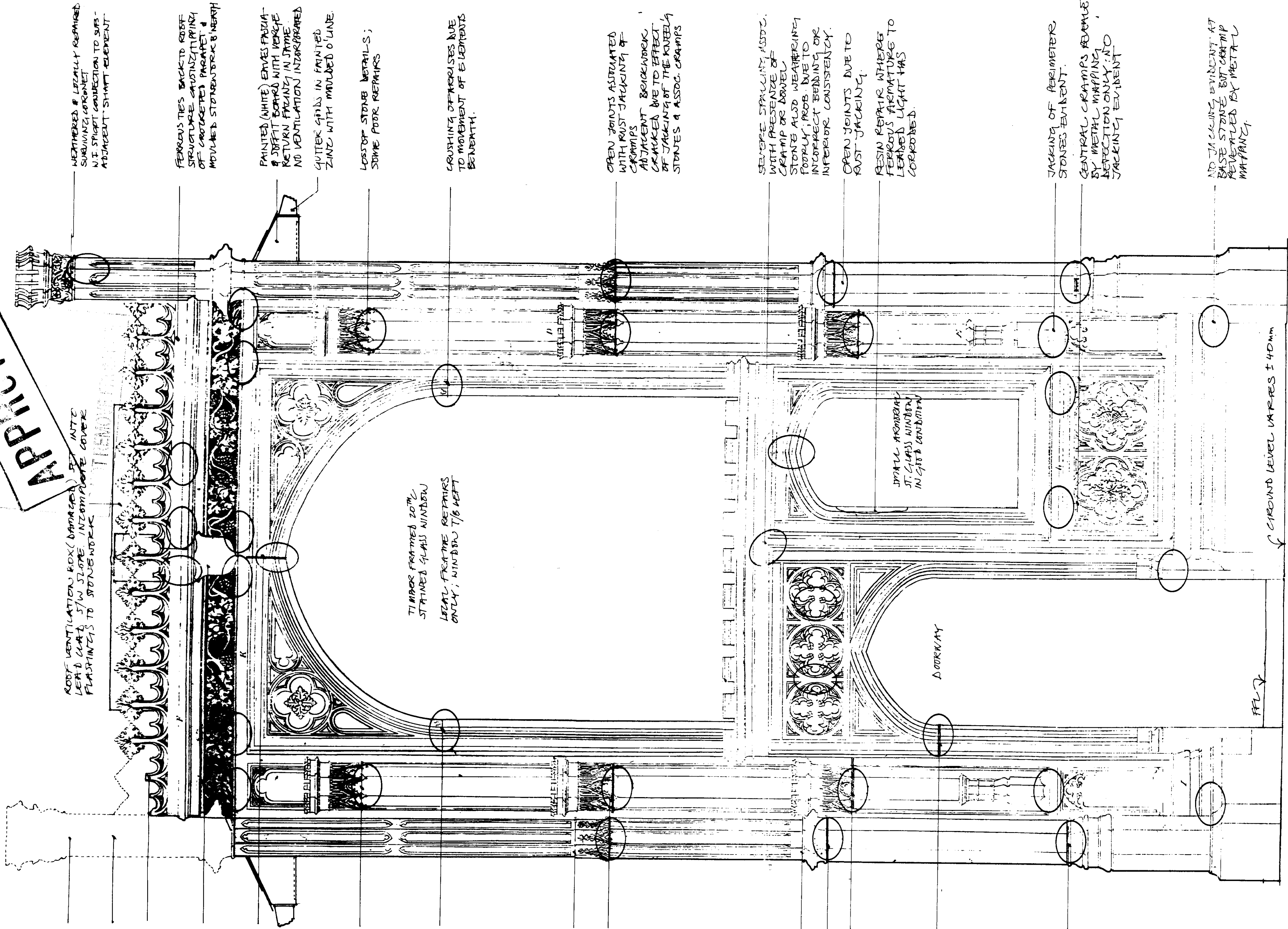


97/0029JBC

LONDON BOROUGH OF RICHMOND UPON RIVER
20 JAN 1997
Planning Transport and Client Services
PLANNING

OFFICE COPY
APPROVED



MISSING CORONET; PRESUMED LOST AFTER DAMAGE FROM ADJACENT WENTREE.
MISSING SHIRT ELEMENT, RECOVERED FROM STAFFE REEF IN IN MAINTENANCE STORE.
MISSING CROCOTET FEATURES, PRESUMED ACUTELY WEATHERED AND POSSIBLY DAMAGED BY ADJACENT TREE.
HERALDIC ELEMENT WITH PEELING BLACK PAINT

APEX OF ARCH OPENED UP ASSOCIATED WITH OXIDISATION OF CRAMP IN JOINT + SPREAD

CREATED UP JOINT WITH SEVERELY WEATHERED CRAMP MISSING CARVED FEATURES

JOINT CRUSHING DUE TO JACKING FROM BELOW ARCHES DAMAGED

TOP OF "KNEELING STONE" INTO 18K WTR BEHIND

ACUTE OXIDISATION JACKING EVIDENT LOSS OF CARVED FEATURES ALSO JACKING OF BK WTR BEHIND ASSOCIATED WITH FERROUS TIES EXISTING

ACUTE OXIDISATION JACKING; RUSTING CRAMP VISIBLE IN JOINTS

ACUTE JACKING ASSOCIATED WITH JOOR SHOT CRAMP OXIDISATION

JOINTS EXHIBITING RUST JACKING

KEY: FERROUS CRAMP EVIDENT DURING METAL MAPPING

ROOF VENTILATION BOX (DAMAGED) SET INTO LEAD & GAB. 5/16 SLOPE. INFORMATION COVER FLASHINGS TO STONEWORK

TIMBER FRAMES 20" x 12" LEAD FROM THE REPAIRS ONLY; WINDOW TIE LEFT

SMALL ARCHWAY AT GABLE WINDOW IN GUTTER CONDITION

GROUND LEVEL VARIES ± 40mm

WEATHERED & LOCALLY REMOVED SURVIVING CORONET N.E. SHIRT CONNECTION TO SUR-ADJACENT SHIRT ELEMENT

FERROUS TIES BACK TO ROOF STRUCTURE CAUSING TIPPING OF CONCRETE PARAPET & MODIFIED STONEWORK BEHIND

PAINTED (WHITE) EAVES FLASHING & JOINT BOARD WITH VERTICAL RETURN FLASHING IN FRAME. NO VENTILATION INTEGRATED

CUTTER GRIDS IN PAINTED ZINC WITH MOTTLED O/LINE LOSS OF STONE DETAILS; SOME POOR REPAIRS

CRUSHING OF PARAPETS DUE TO MOVEMENT OF ELEMENTS BENEATH

OPEN JOINTS ASSOCIATED WITH RUST JACKING OF CRAMP AT JOINTS BEHIND. CRACKS ARE TO EFFECT OF JACKING OF THE KNEELING STONES & ASSOC. CRAMP

SEVERE SPALLING ASSOC. WITH PRESENCE OF CRAMP OR MOVED STONE ALSO WEATHERING FOOTING; PROB. DUE TO IMPROPER BONDING OR INFERIOR CONSISTENCY

OPEN JOINTS DUE TO RUST JACKING. RESIN REPAIR ATHERE FERROUS ATHERING TO LEADEN LIGHT HAS CORRODED

JACKING OF PERIMETERS STONES EVIDENT

CENTRAL CRAMP REVEALED BY METAL MAPPING. DETECTION ONLY. NO JACKING EVIDENT

NO JACKING EVIDENT AT BASE STONE BUT CRAMP REVEALED BY METAL MAPPING

Notes:
DO NOT SCALE FROM THIS DRAWING
USE FIGURED DIMENSIONS ONLY
CHECK ALL DIMENSIONS ON SITE PRIOR TO COMMENCEMENT OF WORK
THIS DRAWING IS THE COPYRIGHT OF JANE JONES-WARNER ARCHITECTS ©

Revisions: _____ Date: _____

Client:
St Mary's College
Project:
Walpole House & The Chapel in the Woods
Waldegrave Road, Strawberry Hill, Twickenham TW1 4SX

ASH DESIGN CONSULTANTS LTD
STUDIO 2, THE CENTRE
NEW ASH GREEN, KENT DA3 8JJ
01474 879484 FX 01474 879707
IN ASSOCIATION WITH
JANE JONES-WARNER
CHARTERED ARCHITECTS

Drawing Title:
Chapel in the Woods
Front or West Elevation
As existing
showing ferrous cramp mapping and defects.

Scale: 1:10 Date: Nov 96

Drawing No: **086/ 59**