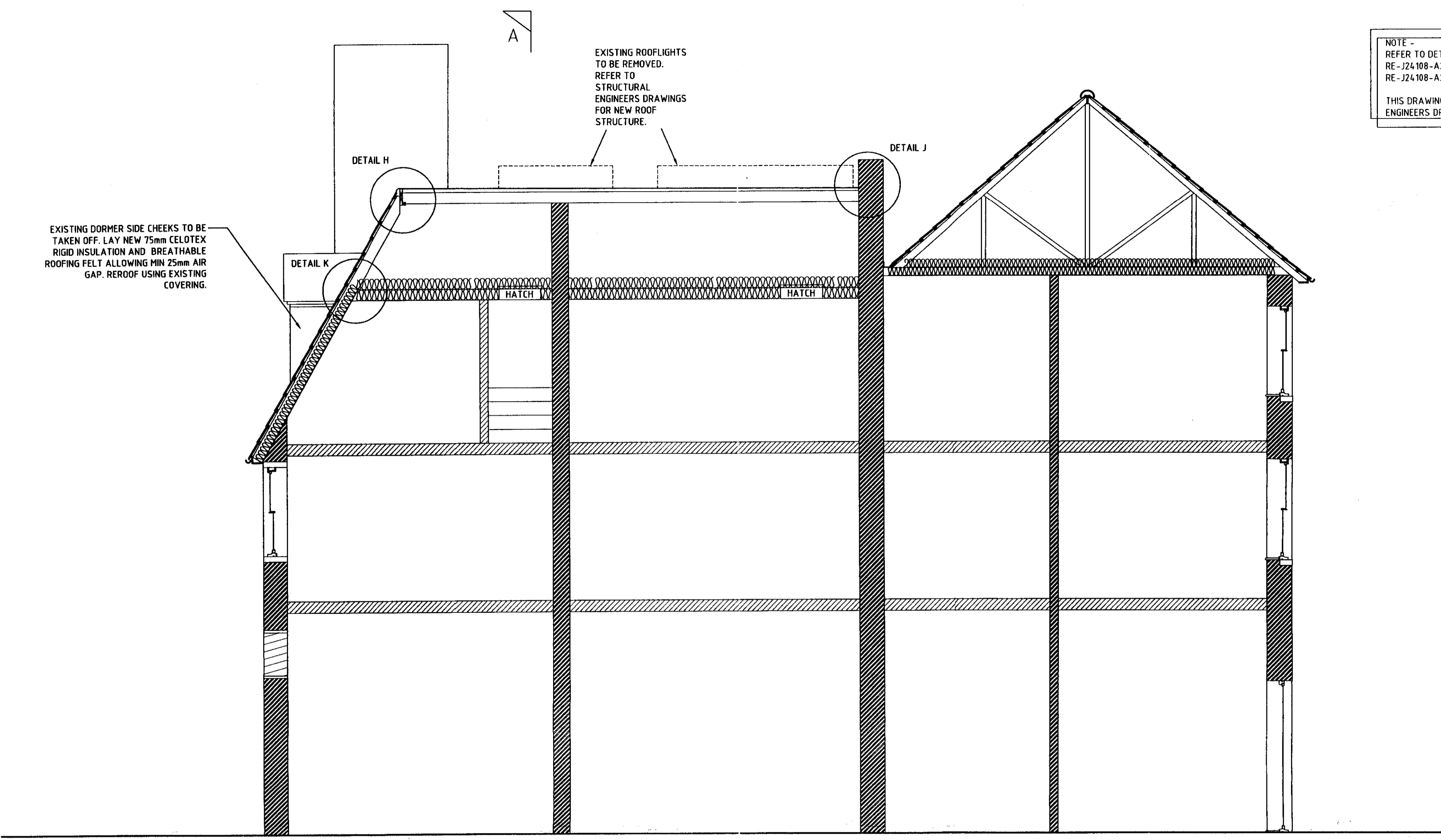


NOTE -  
 REFER TO DETAIL DRAWINGS  
 RE-J24108-A2/1.13/023 FOR DETAILS A-M  
 RE-J24108-A2/1.13/024 FOR DETAILS 2F, 5F, 7F, 9F, 12F, 16F, 18F  
 THIS DRAWING IS TO BE READ IN CONJUNCTION WITH STRUCTURAL  
 ENGINEERS DRAWINGS AND DETAILS

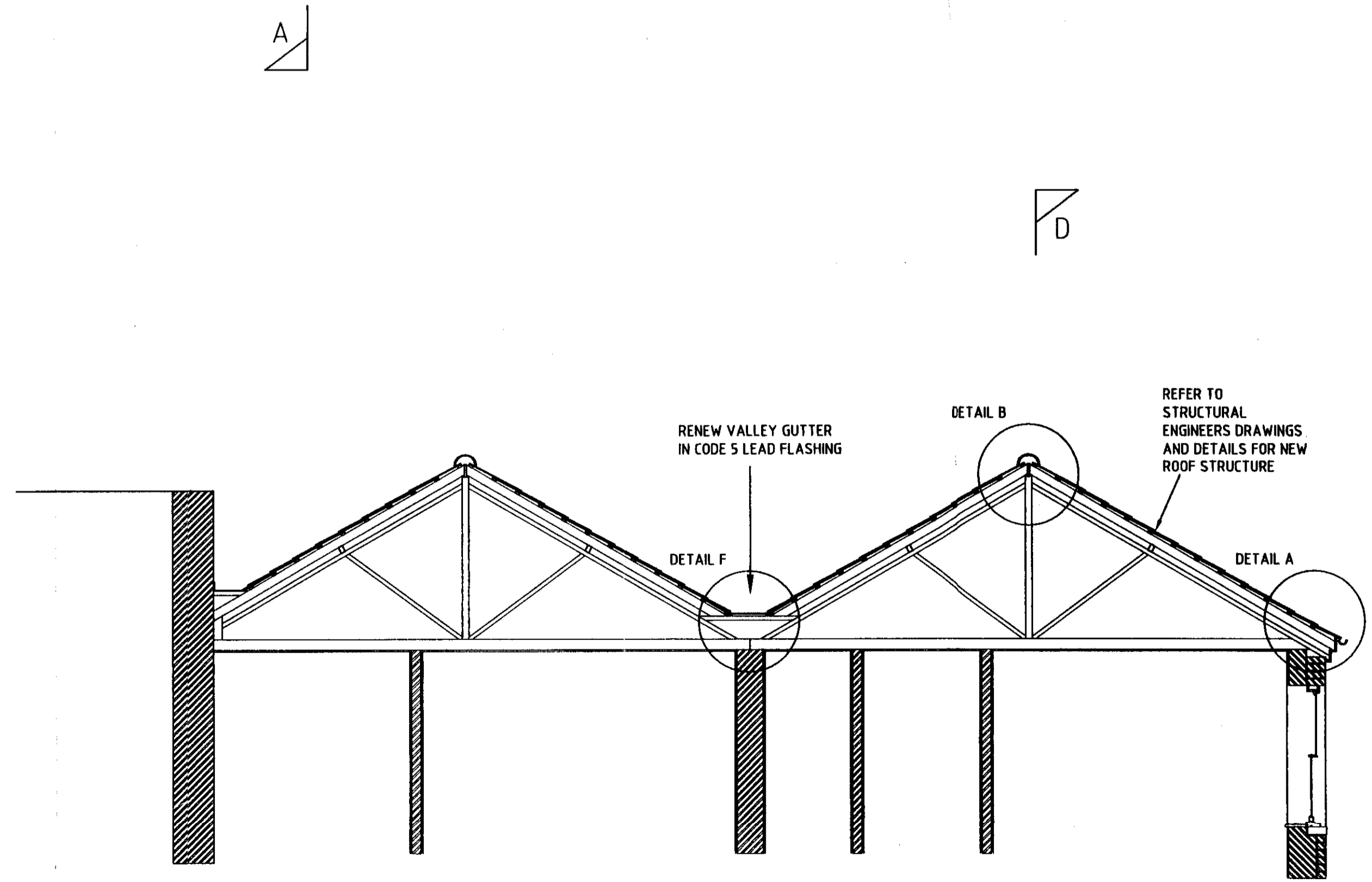
08/31577/FUL

RECEIVED  
 20 OCT 2006  
 PLANNING



EXISTING DORMER SIDE CHEEKS TO BE TAKEN OFF. LAY NEW 75mm CELOTEX RIGID INSULATION AND BREATHABLE ROOFING FELT ALLOWING MIN 25mm AIR GAP. REROOF USING EXISTING COVERING.

SECTION B-B (PROPOSED)



SECTION C-C (PROPOSED)

OXFORD VALLEY REGION  
 22 OCT 2006

0	22.09.06	ISSUED FOR DPP	CL	DL	DL
REV	REVISION DATE	PURPOSE OF REVISION	DRAWN	CHECKED	APPROVED

**JACOBS**  
 JACOBS HOUSE, 427 LONDON ROAD, READING, RG6 1BL, ENGLAND  
 TEL: +44(0)118 983 2000 FAX: +44(0)118 949 1004  
 WEBSITE: WWW.JACOBS.COM

**NOMS Property**

JACOBS SECURITY IDENTIFICATION  
 DATE: 03.10.06  
 REF NO. 8405012...

PROJECT  
 HMP Latchmere House Admin Reroof

DRAWING TITLE  
 Proposed  
 Sections B-B & C-C

DRAWING NUMBER  
 RE-J24108-A2/1.13/114  
 REV 0

BPRN No. 561/03/8405  
 DRAWN DATE SCALES  
 22 Sep 2006 1:50 @ A1

DO NOT SCALE OFF THIS DRAWING.  
 0mm 10mm 100mm  
 ORIGINAL SCALE 1:1

THIS DRAWING IS NOT TO BE USED IN WHOLE OR PART OTHER THAN FOR THE INTENDED PURPOSE AND PROJECT AS DEFINED ON THIS DRAWING. REFER TO THE CONTRACT FOR FULL TERMS AND CONDITIONS.