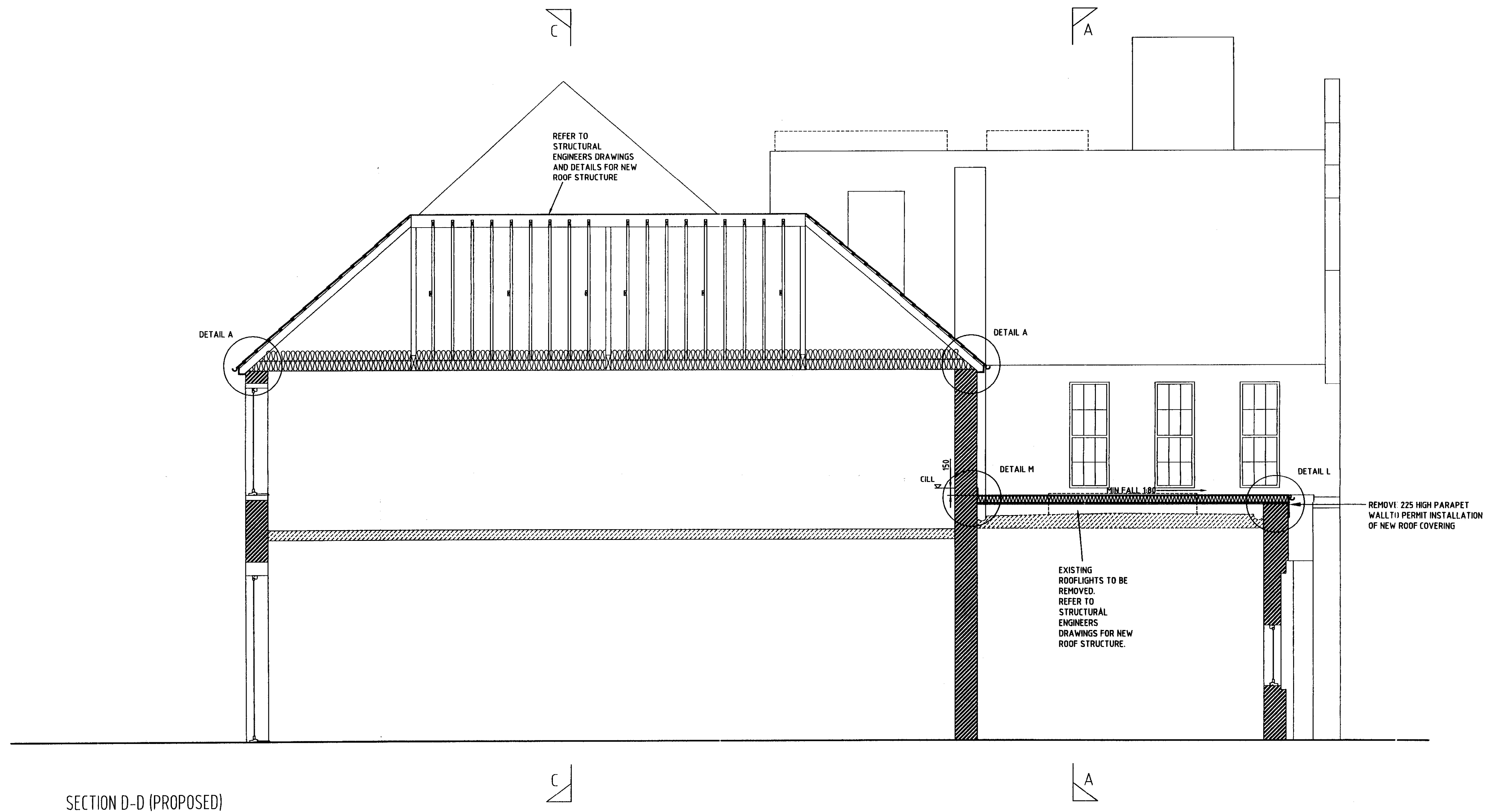


NOTE -
 REFER TO DETAIL DRAWINGS
 RE-J24-108-A2/1.13/023 FOR DETAILS A-M
 RE-J24-108-A2/1.13/024 FOR DETAILS 2F, 5F, 7F, 9F, 12F, 16F, 18F
 THIS DRAWING IS TO BE READ IN CONJUNCTION WITH STRUCTURAL ENGINEERS DRAWINGS AND DETAILS

06/13/15 / FUL

RECEIVED
 20 OCT 2006
 PLANNING



SECTION D-D (PROPOSED)

THAMES VALLEY REGION
 05 OCT 2006

0	22.09.06	ISSUED FOR DPP	CL	DL	DL
REV	REVISION DATE	PURPOSE OF REVISION	DRAWN	CHECKED	APPROVED

JACOBS
 JACOBS HOUSE, 427 LONDON ROAD, READING, RG8 1BL, ENGLAND
 TEL: +44(0)118 953 3000 FAX: +44(0)118 949 1054
 WEBSITE: WWW.JACOBS.COM

NOMS Property

JACOBS SECURITY IDENTIFICATION
 DATE: 03.10.06
 REF NO. 8405/012...

PROJECT
 HMP Latchmere House Admin Reroof

DRAWING TITLE
 Proposed Section D-D

DRAWING NUMBER
 RE-J24108-A2/1.13/115 REV 0

BPRN No. 561/03/1405

DRAWN	DATE	SCALES
	22 Sep 2006	1:50 @ A1

DO NOT SCALE OFF THIS DRAWING.
 0mm 10mm 100mm
 ORIGINAL SCALE 1:1

THIS DRAWING IS NOT TO BE USED IN WHOLE OR PART OTHER THAN FOR THE INTENDED PURPOSE AND PROJECT AS DEFINED ON THIS DRAWING. REFER TO THE CONTRACT FOR FULL TERMS AND CONDITIONS.