



Barnes Hospital
London, Barnes, SW14 8SU
Application Drawings

Squire and Partners LLP on behalf of South West London and St George's Mental Health NHS Trust

Document History

Rev	Date	Purpose of Issue	Author	Reviewer
-	29.10.18	Final Draft	RLE	GH
A	31.10.18	Final Draft	SSI	GH
B	01.11.18	OPA	SSI	GH
C	19.11.18	Revised SEN Footprint	SSI	GH
D	21.11.18	Revised SEN & Landscape	SSI	RB

Contents

- 1.0 Application Drawings**
- 1.1 Drawing List
- 1.2 Existing Drawings
- 1.3 Parameter Drawings
- 1.4 Illustrative Masterplan Drawings
- 1.5 Schedule of Areas

1.0 Application Drawings

1.0 Application Drawings

1.1 Drawing List

Existing Drawings

Drawing No./Rev	Description	Scale
18002_G100_P_00_001/ REV	Existing Site Plan	1:1000 @ A3
18002_JA12_P_00_001/ REV	Existing Ground Floor Plan	1:500 @ A3
18002_JA12_P_01_001/ REV	Existing First Floor Plan	1:500 @ A3
18002_JA12_P_RF_001/ REV	Existing Roof Plan	1:500 @ A3

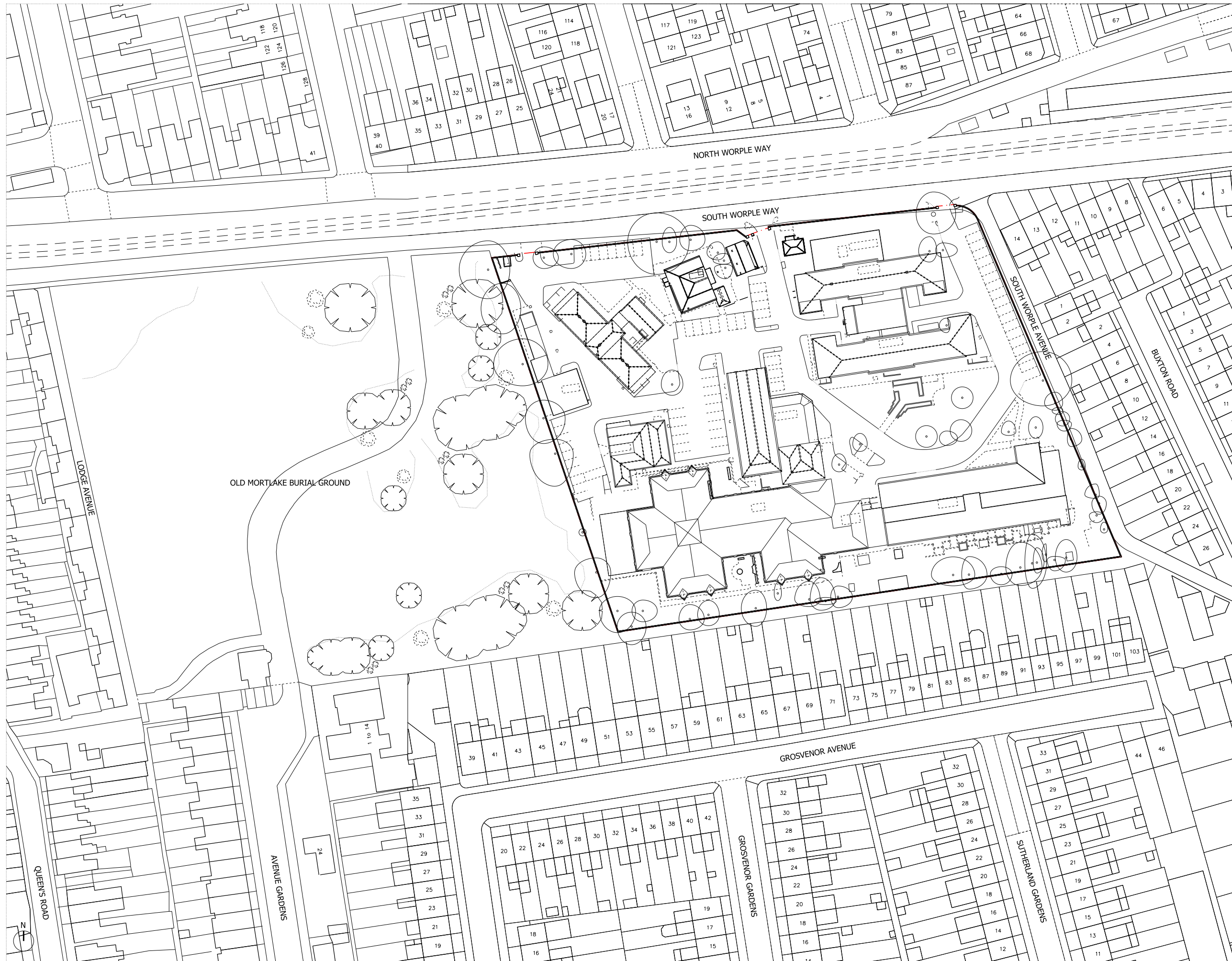
Parameter Drawings

Drawing No./Rev	Description	Scale
18002_C645_P_00_001/ REV	Site Location Plan	1:2500 @ A3
18002_C645_P_00_002/ REV	Existing Site Levels	1:500 @ A3
18002_C645_P_00_003/ REV	Existing Building Heights	1:500 @ A3
18002_C645_P_00_004/ REV	Demolition Plan	1:500 @ A3
18002_C645_P_00_005/ REV	Proposed Site Levels	1:500 @ A3
18002_C645_P_00_006/ REV_A	Proposed Plot Use	1:500 @ A3
18002_C645_P_00_007/ REV_C	Proposed Building uses	1:500 @ A3
18002_C645_P_00_008/ REV_C	Proposed Maximum Storey Heights	1:500 @ A3
18002_C645_P_00_009/ REV_C	Maximum Building Extents	1:500 @ A3
18002_C645_P_00_010/ REV_C	Pedestrian and Cycle Access	1:500 @ A3
18002_C645_P_00_011/ REV_C	Vehicular Access	1:500 @ A3
18002_C645_P_00_012/ REV_C	Public Realm and Landscaping	1:500 @ A3
18002_C645_P_00_013/ REV	Maximum Basement Extents	1:500 @ A3
18002_C645_P_00_014/ REV_C	SEN School Option 2 - Proposed Building uses	1:500 @ A3
18002_C645_P_00_015/ REV_C	SEN School Option 2 - Proposed Maximum Storey Heights	1:500 @ A3
18002_C645_P_00_016/ REV_C	SEN School Option 2 - Maximum Building Extents	1:500 @ A3
18002_C645_P_00_017/ REV_C	SEN School Option 2 - Pedestrian and Cycle Access	1:500 @ A3
18002_C645_P_00_018/ REV_C	SEN School Option 2 - Vehicular Access	1:500 @ A3
18002_C645_P_00_019/ REV_C	SEN School Option 2 - Public Realm and Landscaping	1:500 @ A3

Illustrative Drawings

Drawing No./Rev	Description	Scale
18002_G200_P_00_001/ REV_C	Proposed Ground Floor Plan	1:500 @ A3
18002_G200_P_LG_001/ REV	Proposed Lower Ground Floor Plan	1:500 @ A3
18002_G200_E_W_001/ REV	Proposed West Elevation Facing Burial Ground	1:500 @ A3

1.2 Existing Drawings



NOTES:
 DO NOT SCALE FROM THIS DRAWING.
 ALL DIMENSIONS TO BE CHECKED ON SITE.
 ALL OMISSIONS AND DISCREPANCIES TO BE REPORTED TO THE ARCHITECT IMMEDIATELY.

ALL RIGHTS RESERVED. THIS WORK IS COPYRIGHT AND CANNOT BE REPRODUCED OR COPIED OR MODIFIED IN ANY FORM OR BY ANY MEANS, GRAPHIC ELECTRONIC OR MECHANICAL, INCLUDING PHOTOCOPYING WITHOUT THE WRITTEN PERMISSION OF SQUIRE AND PARTNERS ARCHITECTS.

--- SITE BOUNDARY

Revision	description	Date	Check	Rev

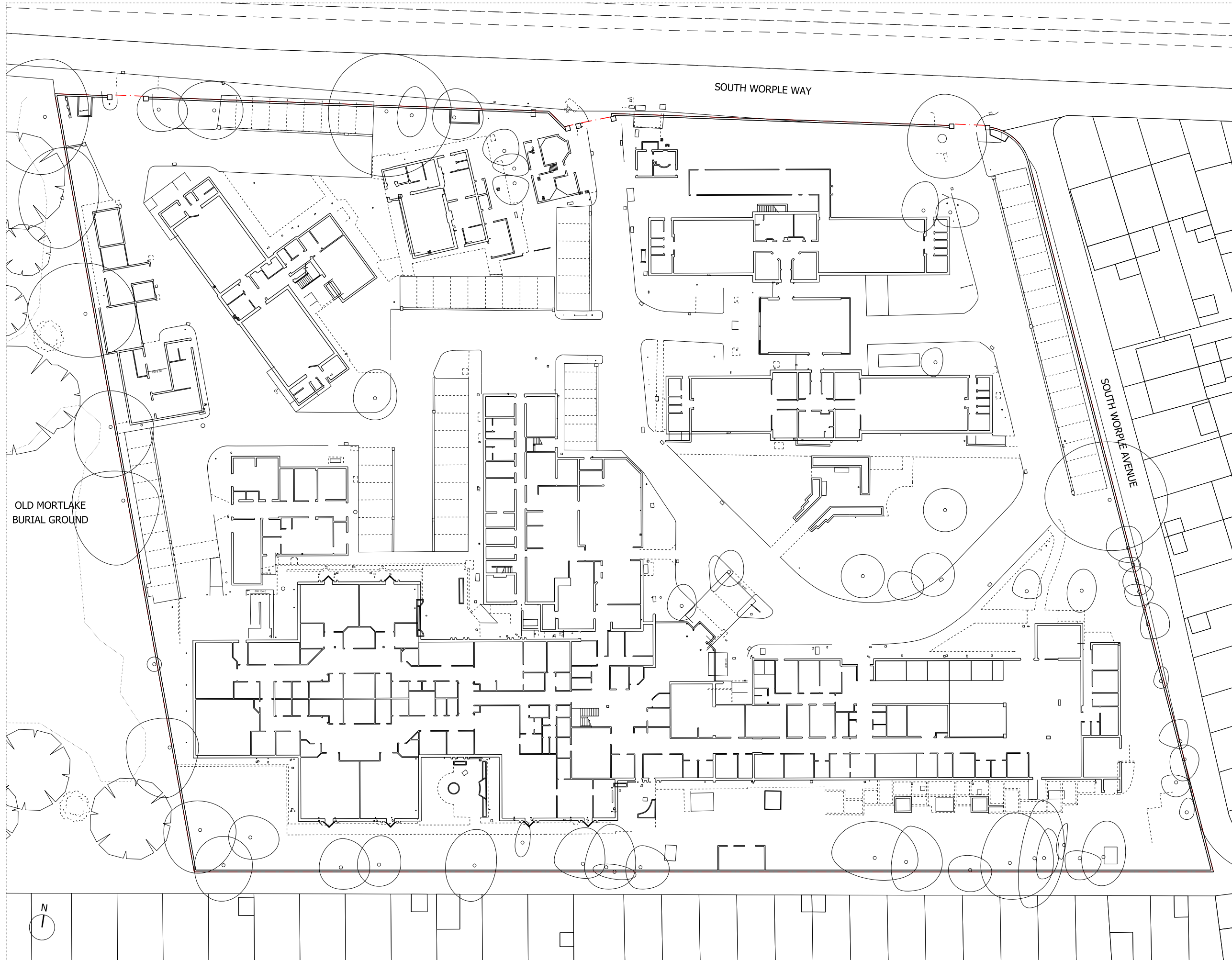
SQUIRE & PARTNERS

The Department Store
 248 Ferndale Road, London SW9 8FR
 T: 020 7278 5555
 info@squireandpartners.com
 www.squireandpartners.com

Project
Barnes Hospital
 South Worple Way
 Barnes, SW14 8SU

Drawing
Site Plan
 Existing

Drawn	Date	Scale
SSI	31/10/2018	1:500@A1 1:1000@A3
Job number	Drawing number	Revision
18002	G100_P_00_001	-



NOTES:
 DO NOT SCALE FROM THIS DRAWING.
 ALL DIMENSIONS TO BE CHECKED ON SITE.
 ALL OMISSIONS AND DISCREPANCIES TO BE REPORTED TO THE ARCHITECT IMMEDIATELY.

ALL RIGHTS RESERVED. THIS WORK IS COPYRIGHT AND CANNOT BE REPRODUCED OR COPIED OR MODIFIED IN ANY FORM OR BY ANY MEANS, GRAPHIC ELECTRONIC OR MECHANICAL, INCLUDING PHOTOCOPYING WITHOUT THE WRITTEN PERMISSION OF SQUIRE AND PARTNERS ARCHITECTS.

--- Site Boundary

Revision	description	Date	Check	Rev

SQUIRE & PARTNERS

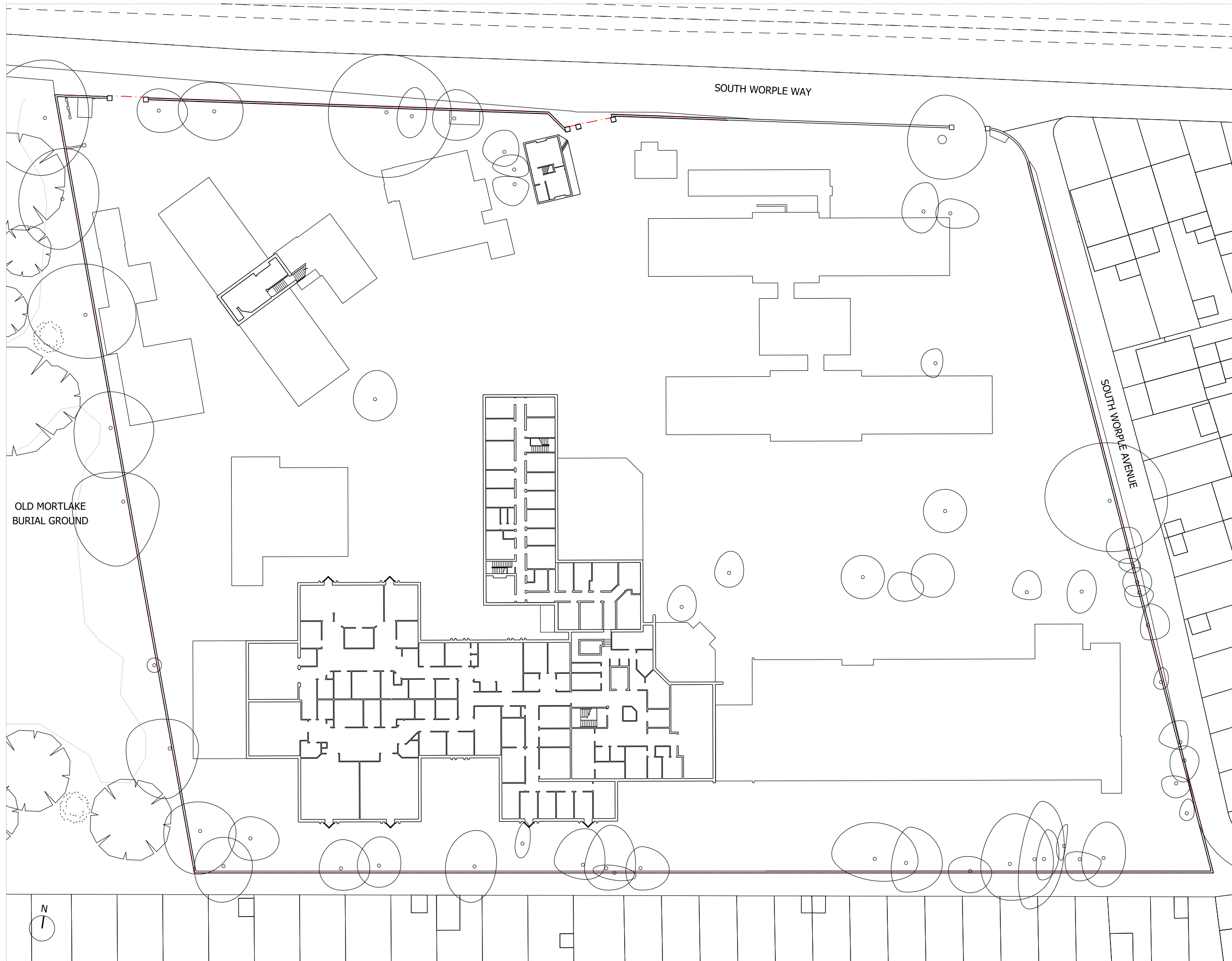
The Department Store
 248 Ferndale Road, London SW9 8FR
 T: 020 7278 5555

info@squireandpartners.com
 www.squireandpartners.com

Project
Barnes Hospital
 South Worple Way
 Barnes, SW14 8SU

Drawing
Existing
 Ground Floor

Drawn	Date	Scale
SSI	31/10/2018	1:250@A1 1:500@A3
Job number	Drawing number	Revision
18002	JA12_P_00_001	-



NOTES:
 DO NOT SCALE FROM THIS DRAWING.
 ALL DIMENSIONS TO BE CHECKED ON SITE.
 ALL OMISSIONS AND DISCREPANCIES TO BE REPORTED TO THE ARCHITECT IMMEDIATELY.

ALL RIGHTS RESERVED. THIS WORK IS COPYRIGHT AND CANNOT BE REPRODUCED OR COPIED OR MODIFIED IN ANY FORM OR BY ANY MEANS, GRAPHIC ELECTRONIC OR MECHANICAL, INCLUDING PHOTOCOPYING WITHOUT THE WRITTEN PERMISSION OF SQUIRE AND PARTNERS ARCHITECTS.

--- Site Boundary

Revision description	Date	Check	Rev

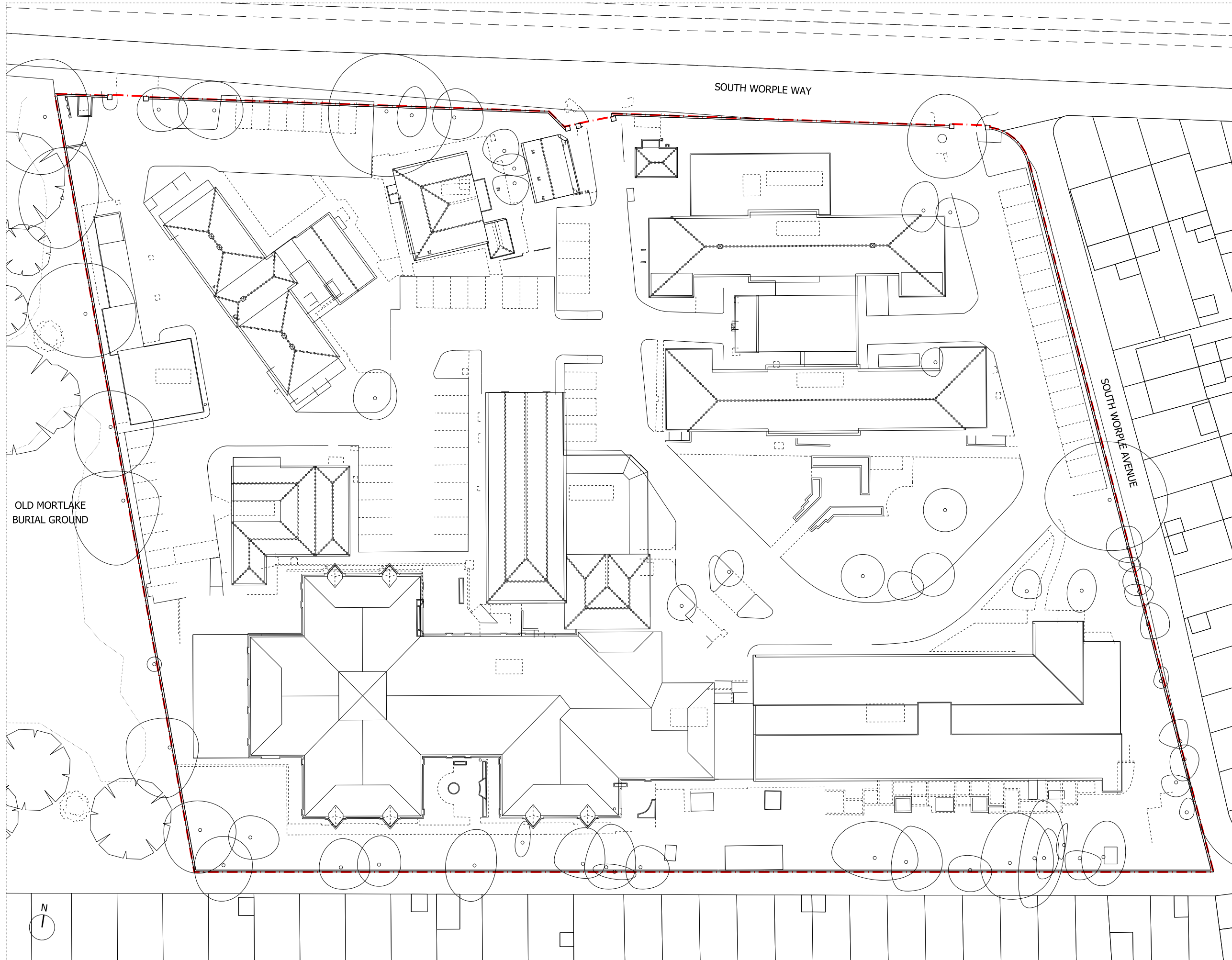
SQUIRE & PARTNERS

The Department Store
 248 Ferndale Road, London SW9 8FR
 T: 020 7278 5555
 info@squireandpartners.com
 www.squireandpartners.com

Project
Barnes Hospital
 South Worple Way
 Barnes, SW14 8SU

Drawing
Existing
 First Floor

Drawn	Date	Scale
SSI	31/10/2018	1:250@A1 1:300@A3
Job number	Drawing number	Revision
18002	JA12_P_01_001	



NOTES:
 DO NOT SCALE FROM THIS DRAWING.
 ALL DIMENSIONS TO BE CHECKED ON SITE.
 ALL OMISSIONS AND DISCREPANCIES TO BE REPORTED TO THE ARCHITECT IMMEDIATELY.

ALL RIGHTS RESERVED. THIS WORK IS COPYRIGHT AND CANNOT BE REPRODUCED OR COPIED OR MODIFIED IN ANY FORM OR BY ANY MEANS, GRAPHIC ELECTRONIC OR MECHANICAL, INCLUDING PHOTOCOPYING WITHOUT THE WRITTEN PERMISSION OF SQUIRE AND PARTNERS ARCHITECTS.

--- Site Boundary

Revision	description	Date	Check	Rev

SQUIRE & PARTNERS

The Department Store
 248 Ferndale Road, London SW9 8FR
 T: 020 7278 5555

info@squireandpartners.com
 www.squireandpartners.com

Project
Barnes Hospital
 South Worpel Way
 Barnes, SW14 8SU

Drawing
Existing
 Roof

Drawn	Date	Scale
SSI	31/10/2018	1: 250@A1 1: 500@A3

Job number	Drawing number	Revision
18002	JA12_P_RF_001	

1.3 Parameter Drawings

NOTES:
 DO NOT SCALE FROM THIS DRAWING.
 ALL DIMENSIONS TO BE CHECKED ON SITE.
 ALL OMISSIONS AND DISCREPANCIES TO BE REPORTED TO THE ARCHITECT IMMEDIATELY.

ALL RIGHTS RESERVED. THIS WORK IS COPYRIGHT AND CANNOT BE REPRODUCED OR COPIED OR MODIFIED IN ANY FORM OR BY ANY MEANS, GRAPHIC ELECTRONIC OR MECHANICAL, INCLUDING PHOTOCOPYING WITHOUT THE WRITTEN PERMISSION OF SQUIRE AND PARTNERS ARCHITECTS.

--- Site Boundary

Site Area: 14350 m2



Revision description	Date	Check	Rev
----------------------	------	-------	-----

SQUIRE & PARTNERS

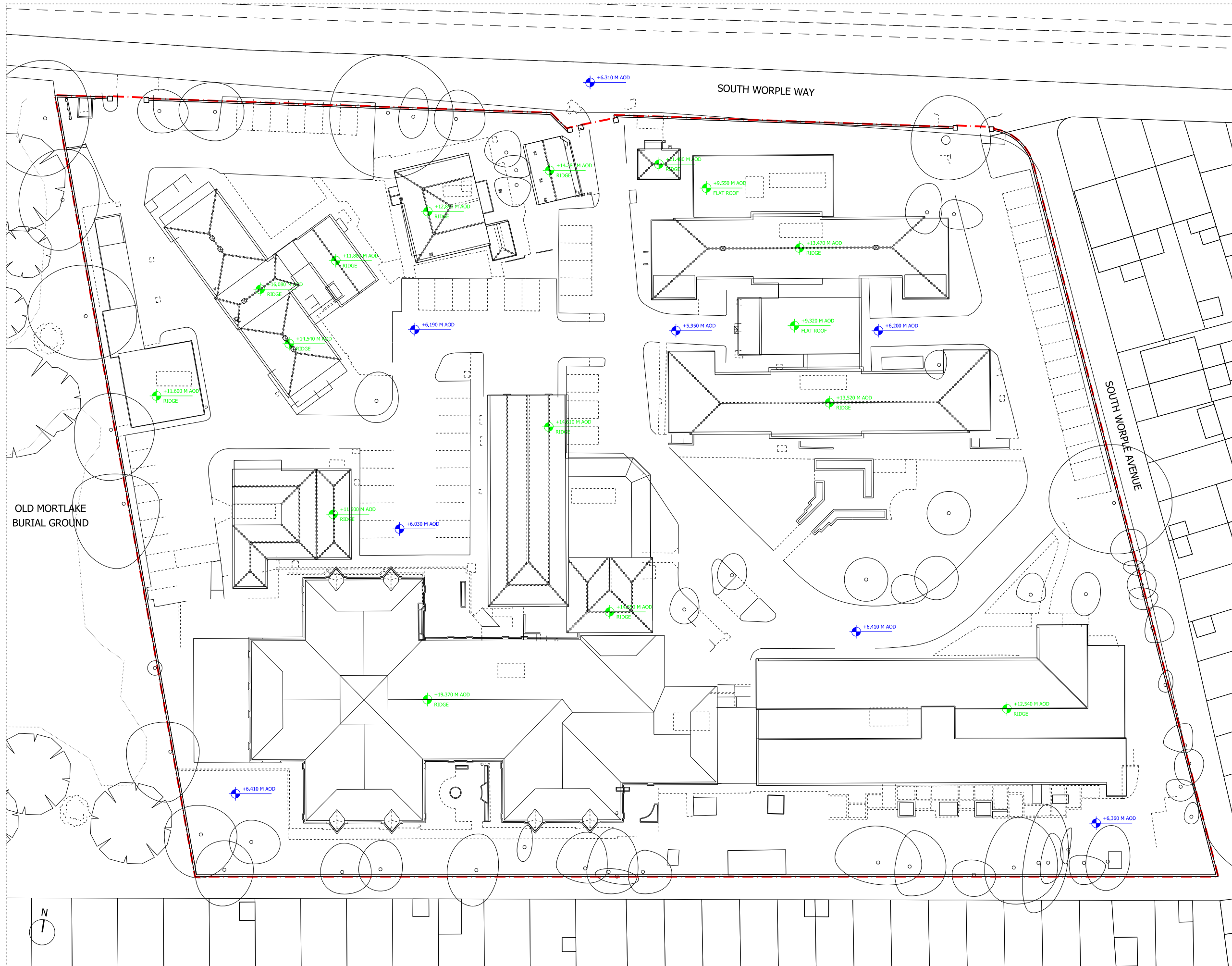
The Department Store
 248 Ferndale Road, London SW9 8FR
 T: 020 7278 5555
 info@squireandpartners.com
 www.squireandpartners.com

Project
Barnes Hospital
 South Worple Way
 Barnes, SW14 8SU

Drawing
Site Location Plan

Drawn	Date	Scale
SSI	01/11/2018	1:1250@A1 1:2500@A3
Job number	Drawing number	Revision
18002	C645_P_00_001	-





NOTES:
 DO NOT SCALE FROM THIS DRAWING.
 ALL DIMENSIONS TO BE CHECKED ON SITE.
 ALL OMISSIONS AND DISCREPANCIES TO BE REPORTED TO THE ARCHITECT IMMEDIATELY.

ALL RIGHTS RESERVED. THIS WORK IS COPYRIGHT AND CANNOT BE REPRODUCED OR COPIED OR MODIFIED IN ANY FORM OR BY ANY MEANS, GRAPHIC ELECTRONIC OR MECHANICAL, INCLUDING PHOTOCOPYING WITHOUT THE WRITTEN PERMISSION OF SQUIRE AND PARTNERS ARCHITECTS.

- - - - - Site Boundary
- ⊕ Ground Level
- ⊕ Building Level

Revision description	Date	Check	Rev

SQUIRE & PARTNERS

The Department Store
 248 Ferndale Road, London SW9 8FR
 T: 020 7278 5555
 info@squireandpartners.com
 www.squireandpartners.com

Project
Barnes Hospital
 South Worple Way
 Barnes, SW14 8SU

Drawing
Existing Site Levels

Drawn	Date	Scale
SSI	01/11/2018	1: 250@A1 1: 500@A3
Job number	Drawing number	Revision
18002	C645_P_00_002	-



NOTES:
 DO NOT SCALE FROM THIS DRAWING.
 ALL DIMENSIONS TO BE CHECKED ON SITE.
 ALL OMISSIONS AND DISCREPANCIES TO BE REPORTED TO THE ARCHITECT IMMEDIATELY.

ALL RIGHTS RESERVED. THIS WORK IS COPYRIGHT AND CANNOT BE REPRODUCED OR COPIED OR MODIFIED IN ANY FORM OR BY ANY MEANS, GRAPHIC ELECTRONIC OR MECHANICAL, INCLUDING PHOTOCOPYING WITHOUT THE WRITTEN PERMISSION OF SQUIRE AND PARTNERS ARCHITECTS.

- - - - - Site Boundary
- 1 Storey
- 1.5 Storey
- 2 Storey
- 2+ / 3 Storey [Overscaled 2 Storey]

Revision description	Date	Check	Rev

SQUIRE & PARTNERS

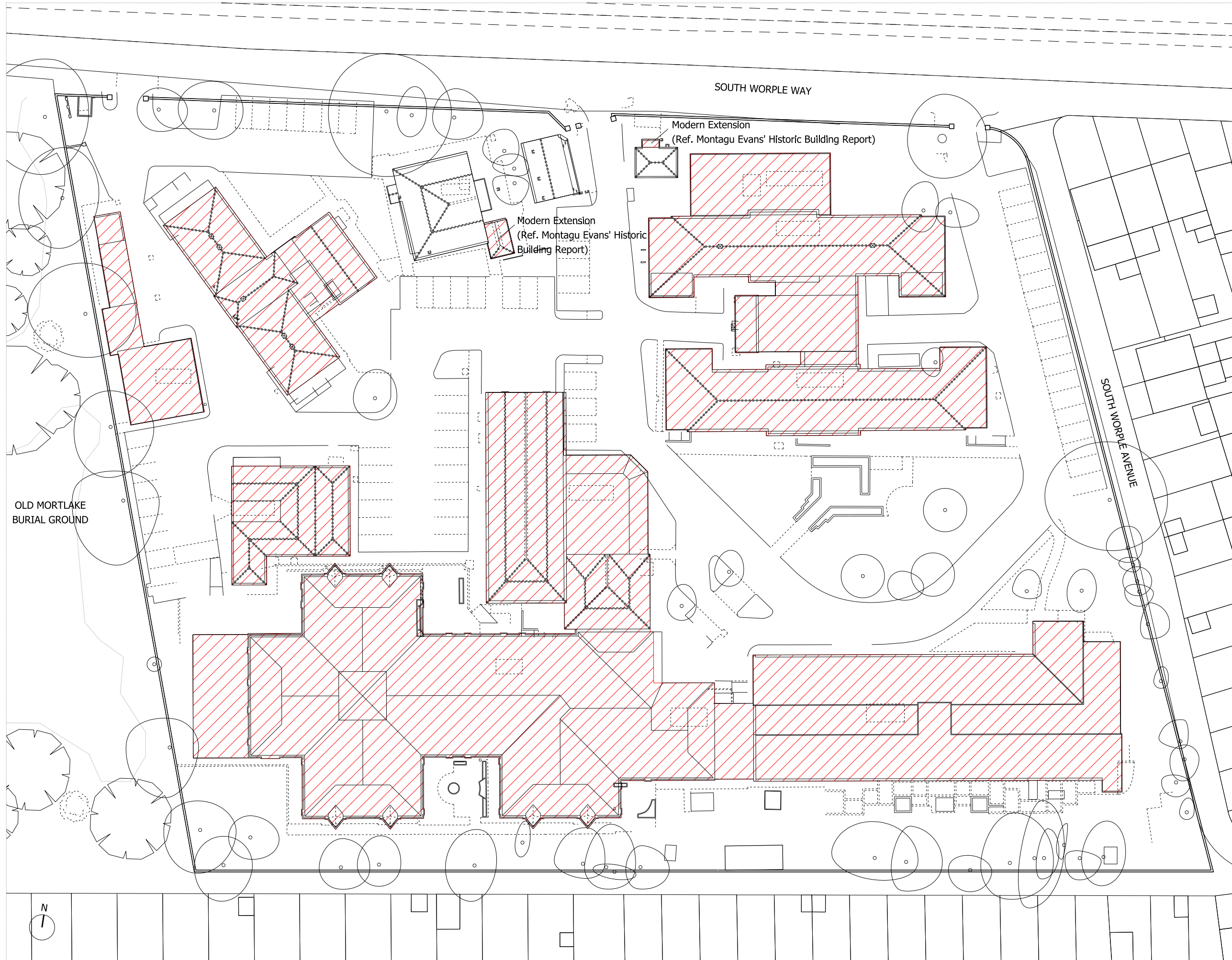
The Department Store
 248 Ferndale Road, London SW9 8FR
 T: 020 7278 5555

info@squireandpartners.com
 www.squireandpartners.com

Project
Barnes Hospital
 South Worple Way
 Barnes, SW14 8SU

Drawing
Existing Building Heights

Drawn	Date	Scale
SSI	01/11/2018	1: 250@A1 1: 500@A3
Job number	Drawing number	Revision
18002	C645_P_00_003	-



NOTES:
 DO NOT SCALE FROM THIS DRAWING.
 ALL DIMENSIONS TO BE CHECKED ON SITE.
 ALL OMISSIONS AND DISCREPANCIES TO BE REPORTED TO THE ARCHITECT IMMEDIATELY.

ALL RIGHTS RESERVED. THIS WORK IS COPYRIGHT AND CANNOT BE REPRODUCED OR COPIED OR MODIFIED IN ANY FORM OR BY ANY MEANS, GRAPHIC ELECTRONIC OR MECHANICAL, INCLUDING PHOTOCOPYING WITHOUT THE WRITTEN PERMISSION OF SQUIRE AND PARTNERS ARCHITECTS.

- Site Boundary
- Buildings to be Demolished

Revision description	Date	Check	Rev

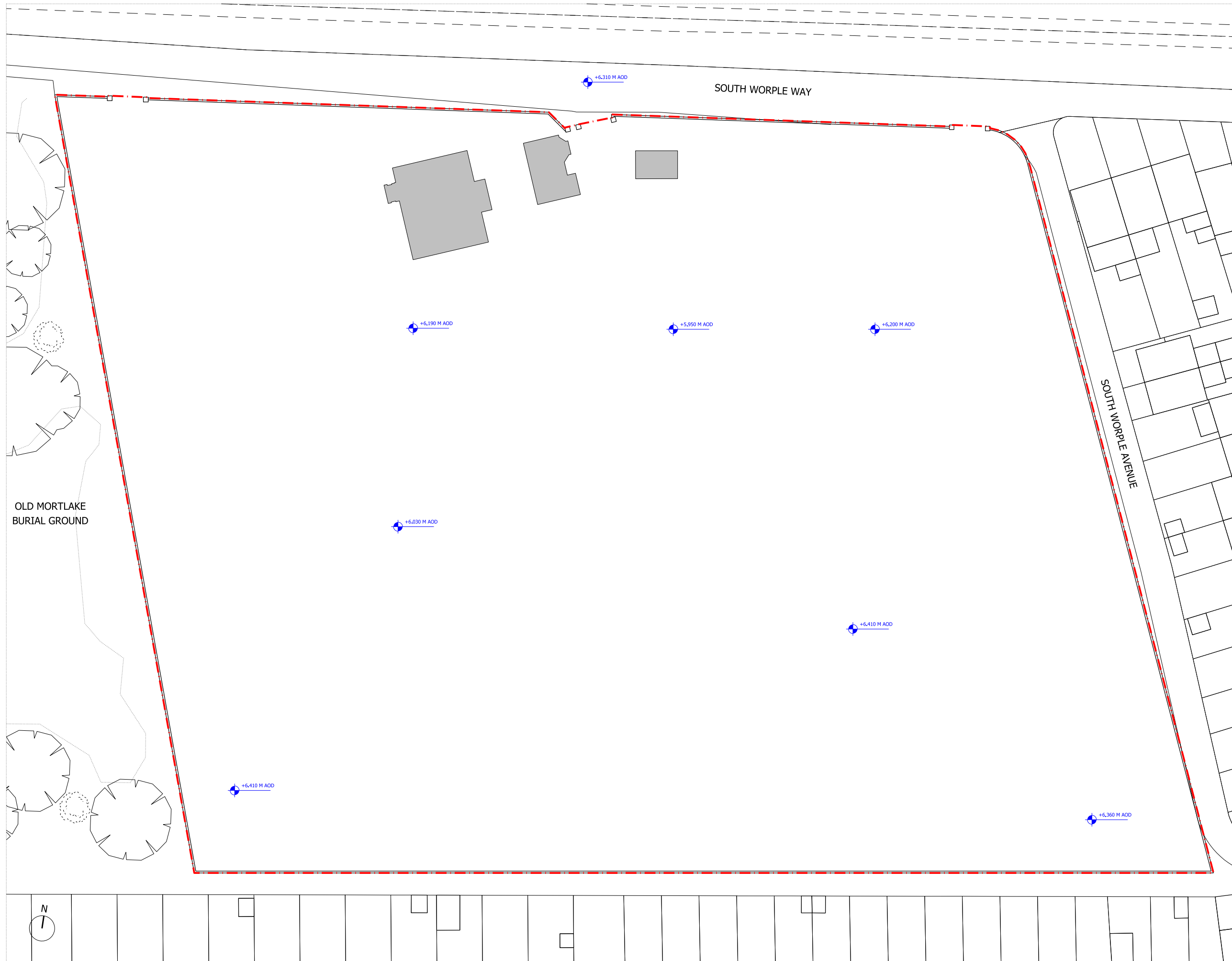
SQUIRE & PARTNERS

The Department Store
 248 Ferndale Road, London SW9 8FR
 T: 020 7278 5555
 info@squireandpartners.com
 www.squireandpartners.com

Project
Barnes Hospital
 South Worple Way
 Barnes, SW14 8SU

Drawing
Demolition Plan

Drawn	Date	Scale
SSI	01/11/2018	1:250@A1 1:500@A3
Job number	Drawing number	Revision
18002	C645_P_00_004	-



NOTES:
 DO NOT SCALE FROM THIS DRAWING.
 ALL DIMENSIONS TO BE CHECKED ON SITE.
 ALL OMISSIONS AND DISCREPANCIES TO BE REPORTED TO THE ARCHITECT IMMEDIATELY.

ALL RIGHTS RESERVED. THIS WORK IS COPYRIGHT AND CANNOT BE REPRODUCED OR COPIED OR MODIFIED IN ANY FORM OR BY ANY MEANS, GRAPHIC ELECTRONIC OR MECHANICAL, INCLUDING PHOTOCOPYING WITHOUT THE WRITTEN PERMISSION OF SQUIRE AND PARTNERS ARCHITECTS.

- Site Boundary
- ⊕ Ground Level

Revision description	Date	Check	Rev

SQUIRE & PARTNERS

The Department Store
 248 Ferndale Road, London SW9 8FR
 T: 020 7278 5555
 info@squireandpartners.com
 www.squireandpartners.com

Project
Barnes Hospital
 South Worple Way
 Barnes, SW14 8SU

Drawing
Proposed Site Levels

Drawn	Date	Scale
SSI	01/11/2018	1:250@A1 1:300@A3
Job number	Drawing number	Revision
18002	C645_P_00_005	-





NOTES:
 DO NOT SCALE FROM THIS DRAWING.
 ALL DIMENSIONS TO BE CHECKED ON SITE.
 ALL OMISSIONS AND DISCREPANCIES TO BE REPORTED TO THE ARCHITECT IMMEDIATELY.

ALL RIGHTS RESERVED. THIS WORK IS COPYRIGHT AND CANNOT BE REPRODUCED OR COPIED OR MODIFIED IN ANY FORM OR BY ANY MEANS, GRAPHIC ELECTRONIC OR MECHANICAL, INCLUDING PHOTOCOPYING WITHOUT THE WRITTEN PERMISSION OF SQUIRE AND PARTNERS ARCHITECTS.

- - - - - Site Boundary
- Residential
- Health Care Hub
- Sen School

OLD MORTLAKE BURIAL GROUND

Residential
 Site area:
 7993 Sq. m
 56% of Plot

Healthcare Centre
 Site Area:
 2893 Sq. m
 21% of Plot

Special Educational Needs School
 Site area:
 3346 Sq. m
 23% of Plot

SOUTH WORPLE WAY

SOUTH WORPLE AVENUE

Revision description	Date	Check	Rev
Plot Boundary	31/10/18	GH	A

SQUIRE & PARTNERS

The Department Store
 248 Ferndale Road, London SW9 8FR
 T: 020 7278 5555
 info@squireandpartners.com
 www.squireandpartners.com

Project
Barnes Hospital
 South Worple Way
 Barnes, SW14 8SU

Drawing
Proposed Plot Use

Drawn	Date	Scale
SSI	01/11/2018	1: 250@A1 1: 500@A3
Job number	Drawing number	Revision
18002	C645_P_00_006	A





NOTES:
 DO NOT SCALE FROM THIS DRAWING.
 ALL DIMENSIONS TO BE CHECKED ON SITE.
 ALL OMISSIONS AND DISCREPANCIES TO BE REPORTED TO THE ARCHITECT IMMEDIATELY.

ALL RIGHTS RESERVED. THIS WORK IS COPYRIGHT AND CANNOT BE REPRODUCED OR COPIED OR MODIFIED IN ANY FORM OR BY ANY MEANS, GRAPHIC ELECTRONIC OR MECHANICAL, INCLUDING PHOTOCOPYING WITHOUT THE WRITTEN PERMISSION OF SQUIRE AND PARTNERS ARCHITECTS.

- - - - - Site Boundary
- Residential
- Healthcare Hub
- SEN School

SEN Footprint Revision	21/11/18	RB	C
SEN Footprint Revision	15/11/18	GH	B
HH Footprint Revision	31/10/18	GH	A
Revision description	Date	Check	Rev

SQUIRE & PARTNERS

The Department Store
 248 Ferndale Road, London SW9 8FR
 T: 020 7278 5555
 info@squireandpartners.com
 www.squireandpartners.com

Project
Barnes Hospital
 South Worple Way
 Barnes, SW14 8SU

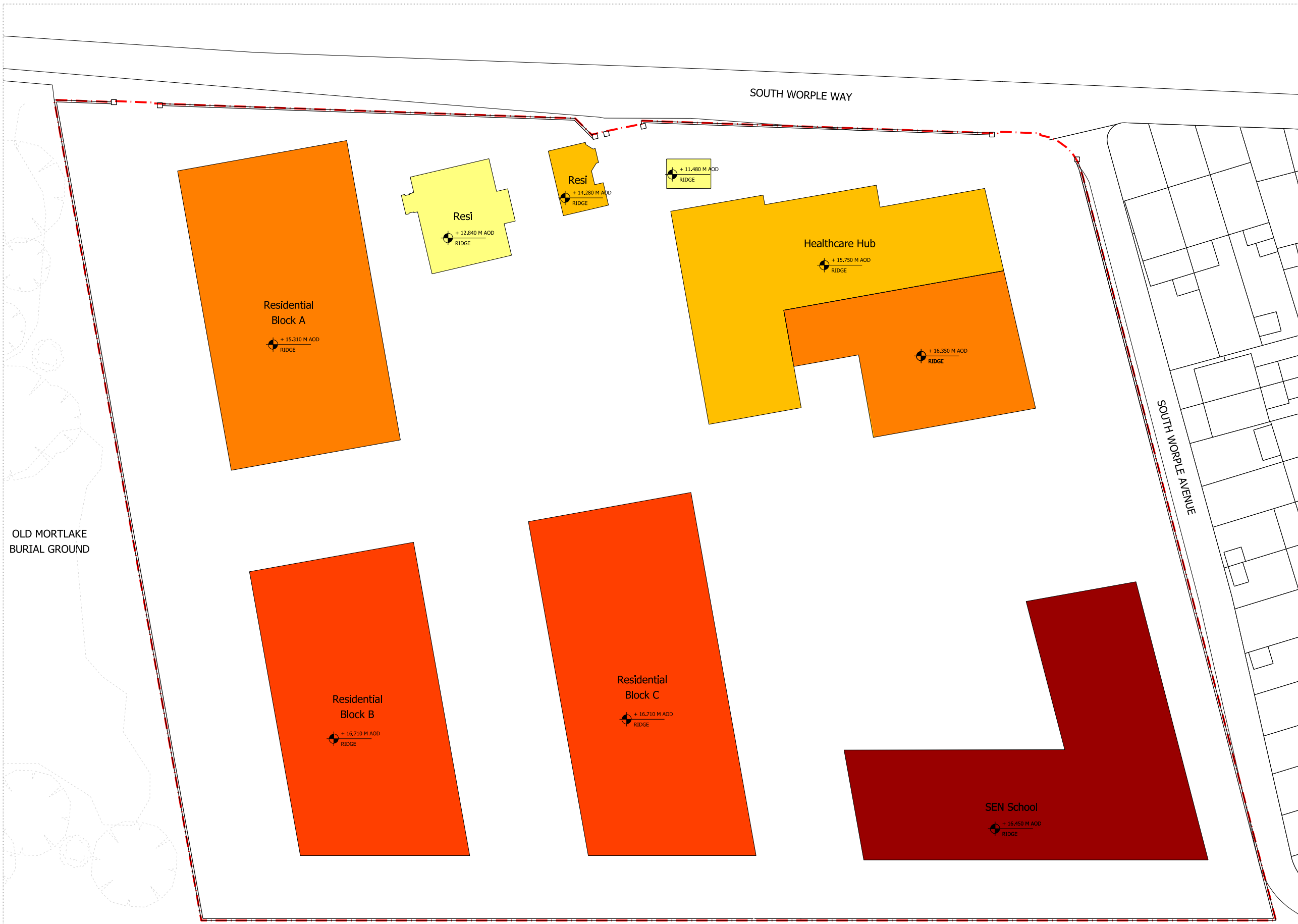
Drawing
Proposed Building Uses

Drawn	Date	Scale
SSI	21/11/2018	1: 250@A1 1: 500@A3
Job number	Drawing number	Revision
18002	C645_P_00_007	C

NOTES:
 DO NOT SCALE FROM THIS DRAWING.
 ALL DIMENSIONS TO BE CHECKED ON SITE.
 ALL OMISSIONS AND DISCREPANCIES TO BE REPORTED TO THE ARCHITECT IMMEDIATELY.

ALL RIGHTS RESERVED. THIS WORK IS COPYRIGHT AND CANNOT BE REPRODUCED OR COPIED OR MODIFIED IN ANY FORM OR BY ANY MEANS, GRAPHIC ELECTRONIC OR MECHANICAL, INCLUDING PHOTOCOPYING WITHOUT THE WRITTEN PERMISSION OF SQUIRE AND PARTNERS ARCHITECTS.

-  Site Boundary
-  1 Storey
-  2 Storey
-  2.5 Storey
-  2.5 / 3 Storey
-  3 Storey



OLD MORTLAKE BURIAL GROUND

SOUTH WORPLE WAY

SOUTH WORPLE AVENUE

SEN Footprint Revision	21/11/18	RB	C
SEN Footprint Revision	15/11/18	GH	B
HH Footprint Revision	31/10/18	GH	A
Revision description	Date	Check	Rev

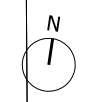
SQUIRE & PARTNERS

The Department Store
 248 Ferndale Road, London SW9 8FR
 T: 020 7278 5555
 info@squireandpartners.com
 www.squireandpartners.com

Project
Barnes Hospital
 South Worple Way
 Barnes, SW14 8SU

Drawing
Proposed Maximum Storey Heights

Drawn	Date	Scale
SSI	21/11/2018	1: 250@A1 1: 500@A3
Job number	Drawing number	Revision
18002	C645_P_00_008	C





NOTES:
 DO NOT SCALE FROM THIS DRAWING.
 ALL DIMENSIONS TO BE CHECKED ON SITE.
 ALL OMISSIONS AND DISCREPANCIES TO BE REPORTED TO THE ARCHITECT IMMEDIATELY.

ALL RIGHTS RESERVED. THIS WORK IS COPYRIGHT AND CANNOT BE REPRODUCED OR COPIED OR MODIFIED IN ANY FORM OR BY ANY MEANS, GRAPHIC ELECTRONIC OR MECHANICAL, INCLUDING PHOTOCOPYING WITHOUT THE WRITTEN PERMISSION OF SQUIRE AND PARTNERS ARCHITECTS.

- - - - - Site Boundary
- Maximum Extent of Projecting Window Bays at First Floor and Second Floor Levels
- Maximum Extent of Principal Massing

OLD MORTLAKE BURIAL GROUND

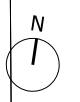
SEN Footprint Revision	21/11/18	RB	C
SEN Footprint Revision	15/11/18	GH	B
HH Footprint Revision	31/10/18	GH	A
Revision description	Date	Check	Rev

SQUIRE & PARTNERS
 The Department Store
 248 Ferndale Road, London SW9 8FR
 T: 020 7278 5555
 info@squireandpartners.com
 www.squireandpartners.com

Project
Barnes Hospital
 South Worple Way
 Barnes, SW14 8SU

Drawing
Maximum Building Extents

Drawn	Date	Scale
SSI	21/11/2018	1: 250@A1 1: 500@A3
Job number	Drawing number	Revision
18002	C645_P_00_009	C





NOTES:
 DO NOT SCALE FROM THIS DRAWING.
 ALL DIMENSIONS TO BE CHECKED ON SITE.
 ALL OMISSIONS AND DISCREPANCIES TO BE REPORTED TO THE ARCHITECT IMMEDIATELY.

ALL RIGHTS RESERVED. THIS WORK IS COPYRIGHT AND CANNOT BE REPRODUCED OR COPIED OR MODIFIED IN ANY FORM OR BY ANY MEANS, GRAPHIC ELECTRONIC OR MECHANICAL, INCLUDING PHOTOCOPYING WITHOUT THE WRITTEN PERMISSION OF SQUIRE AND PARTNERS ARCHITECTS.

- - - - Site Boundary
- - - - Cycle Access Route
- - - - Pedestrian Access Route
- Residential Short Stay Cycle Store
- Health Hub Visitor Cycle Store
- Health Hub Staff Cycle Store
- SEN School Visitor Cycle Store
- SEN School Staff Cycle Store

SEN Footprint Revision	21/11/18	RB	C
SEN Footprint Revision	15/11/18	GH	B
HH Footprint Revision	31/10/18	GH	A
Revision description	Date	Check	Rev

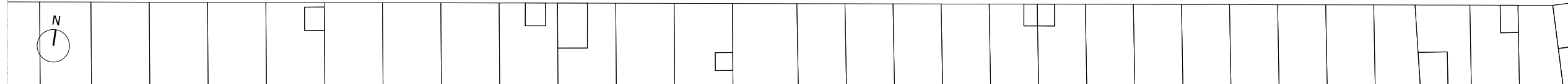
SQUIRE & PARTNERS

The Department Store
 248 Ferndale Road, London SW9 8FR
 T: 020 7278 5555
 info@squireandpartners.com
 www.squireandpartners.com

Project
Barnes Hospital
 South Worple Way
 Barnes, SW14 8SU

Drawing
Proposed Pedestrian & Cycle
 Access Plan

Drawn	Date	Scale
SSI	21/11/2018	1: 250@A1 1: 500@A3
Job number	Drawing number	Revision
18002	C645_P_00_010	C





NOTES:
 DO NOT SCALE FROM THIS DRAWING.
 ALL DIMENSIONS TO BE CHECKED ON SITE.
 ALL OMISSIONS AND DISCREPANCIES TO BE REPORTED TO THE ARCHITECT IMMEDIATELY.

ALL RIGHTS RESERVED. THIS WORK IS COPYRIGHT AND CANNOT BE REPRODUCED OR COPIED OR MODIFIED IN ANY FORM OR BY ANY MEANS, GRAPHIC ELECTRONIC OR MECHANICAL, INCLUDING PHOTOCOPYING WITHOUT THE WRITTEN PERMISSION OF SQUIRE AND PARTNERS ARCHITECTS.

- - - - Site Boundary
- - - - Vehicular Access Route
- - - - Fire Engine Alternative Access
- ▨ Health Hub Car Parking Spaces
- ▨ SEN School Car Parking Spaces

SEN Footprint Revision	21/11/18	RB	C
SEN Footprint Revision	15/11/18	GH	B
HH Footprint Revision	31/10/18	GH	A
Revision description	Date	Check	Rev

SQUIRE & PARTNERS

The Department Store
 248 Ferndale Road, London SW9 8FR
 T: 020 7278 5555

Info@squireandpartners.com
 www.squireandpartners.com

Project
Barnes Hospital
 South Worple Way
 Barnes, SW14 8SU

Drawing
Proposed Vehicular Access Plan

Drawn	Date	Scale
SSI	21/11/2018	1:2500A1 1:2500B A3
Job number	Drawing number	Revision
18002	C645_P_00_011	C





- NOTES:
- DO NOT SCALE FROM THIS DRAWING.
 - ALL DIMENSIONS TO BE CHECKED ON SITE.
 - ALL OMISSIONS AND DISCREPANCIES TO BE REPORTED TO THE ARCHITECT IMMEDIATELY.
- ALL RIGHTS RESERVED. THIS WORK IS COPYRIGHT AND CANNOT BE REPRODUCED OR COPIED OR MODIFIED IN ANY FORM OR BY ANY MEANS, GRAPHIC ELECTRONIC OR MECHANICAL, INCLUDING PHOTOCOPYING WITHOUT THE WRITTEN PERMISSION OF SQUIRE AND PARTNERS ARCHITECTS.
- Site Boundary
 - Open Space With Indicative Planting & Managed Public Access
 - Private External Amenity Space
 - Soft Landscaping
 - Existing Trees Retained
 - Existing Trees To Be Removed

OLD MORTLAKE BURIAL GROUND

SEN Footprint & Landscape Revision	21/11/18	RB	C
SEN Footprint Revision	15/11/18	GH	B
HH Footprint Revision	31/10/18	GH	A
Revision description	Date	Check	Rev

SQUIRE & PARTNERS

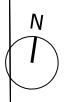
The Department Store
 248 Ferndale Road, London SW9 8FR
 T: 020 7278 5555

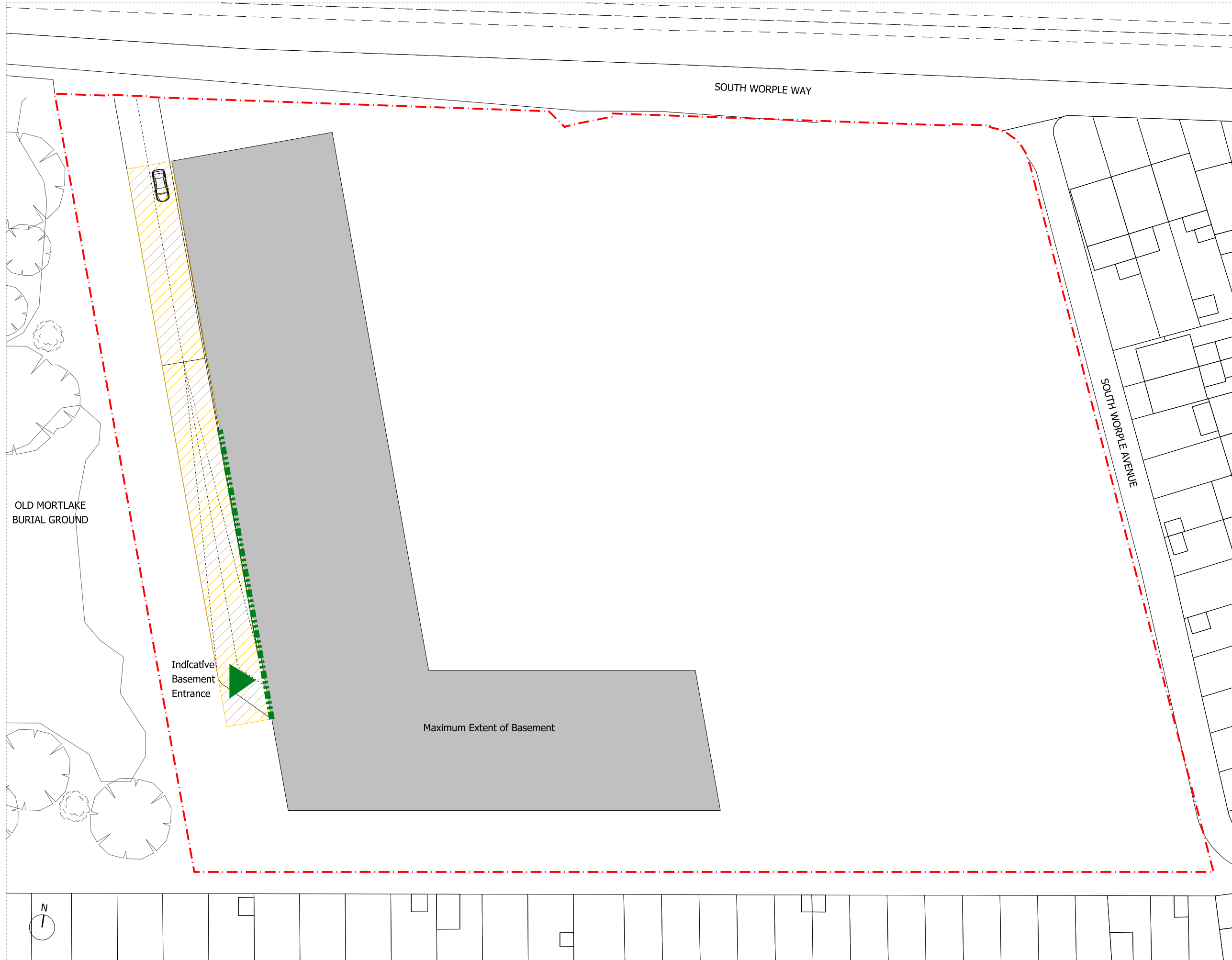
Info@squireandpartners.com
 www.squireandpartners.com

Project
Barnes Hospital
 South Worple Way
 Barnes, SW14 8SU

Drawing
Proposed Public Realm & Landscaping




Drawn	Date	Scale
SSI	21/11/2018	1:250@A1 1:500@A3
Job number	Drawing number	Revision
18002	C645_P_00_012	C





NOTES:
 DO NOT SCALE FROM THIS DRAWING.
 ALL DIMENSIONS TO BE CHECKED ON SITE.
 ALL OMISSIONS AND DISCREPANCIES TO BE REPORTED TO THE ARCHITECT IMMEDIATELY.

ALL RIGHTS RESERVED. THIS WORK IS COPYRIGHT AND CANNOT BE REPRODUCED OR COPIED OR MODIFIED IN ANY FORM OR BY ANY MEANS, GRAPHIC ELECTRONIC OR MECHANICAL, INCLUDING PHOTOCOPYING WITHOUT THE WRITTEN PERMISSION OF SQUIRE AND PARTNERS ARCHITECTS.

-  Site Boundary
-  Permitted Zone for Ramp Entrance
-  Permitted Zone for Ramp Location

Revision description	Date	Check	Rev

SQUIRE & PARTNERS

The Department Store
 248 Ferndale Road, London SW9 8FR
 T: 020 7278 5555
 info@squireandpartners.com
 www.squireandpartners.com

Project
Barnes Hospital
 South Worple Way
 Barnes, SW14 8SU

Drawing
Maximum Building Extent
Basement Plan

Drawn	Date	Scale
RLe	01/11/2018	1: 250@A1 1: 500@A3
Job number	Drawing number	Revision
18002	C645_P_00_013	-



NOTES:
 DO NOT SCALE FROM THIS DRAWING.
 ALL DIMENSIONS TO BE CHECKED ON SITE.
 ALL OMISSIONS AND DISCREPANCIES TO BE REPORTED TO THE ARCHITECT IMMEDIATELY.

ALL RIGHTS RESERVED. THIS WORK IS COPYRIGHT AND CANNOT BE REPRODUCED OR COPIED OR MODIFIED IN ANY FORM OR BY ANY MEANS, GRAPHIC ELECTRONIC OR MECHANICAL, INCLUDING PHOTOCOPYING WITHOUT THE WRITTEN PERMISSION OF SQUIRE AND PARTNERS ARCHITECTS.

- - - - - Site Boundary
- Residential
- Healthcare Hub
- SEN School

SEN Footprint Revision	21/11/18	RB	C
SEN Footprint Revision	15/11/18	GH	B
HH Footprint Revision	31/10/18	GH	A
Revision description	Date	Check	Rev

SQUIRE & PARTNERS

The Department Store
 248 Ferndale Road, London SW9 8FR
 T: 020 7278 5555
 info@squireandpartners.com
 www.squireandpartners.com

Project
Barnes Hospital
 South Worple Way
 Barnes, SW14 8SU

Drawing
SEN School Option 2
 Proposed Building Uses

Drawn	Date	Scale
SSI	21/11/2018	1: 250@A1 1: 500@A3
Job number	Drawing number	Revision
18002	C645_P_00_014	C



NOTES:
 DO NOT SCALE FROM THIS DRAWING.
 ALL DIMENSIONS TO BE CHECKED ON SITE.
 ALL OMISSIONS AND DISCREPANCIES TO BE REPORTED TO THE ARCHITECT IMMEDIATELY.

ALL RIGHTS RESERVED. THIS WORK IS COPYRIGHT AND CANNOT BE REPRODUCED OR COPIED OR MODIFIED IN ANY FORM OR BY ANY MEANS, GRAPHIC ELECTRONIC OR MECHANICAL, INCLUDING PHOTOCOPYING WITHOUT THE WRITTEN PERMISSION OF SQUIRE AND PARTNERS ARCHITECTS.

- Site Boundary
- 1 Storey
- 2 Storey
- 2.5 Storey
- 2.5 / 3 Storey
- 3 Storey

OLD MORTLAKE BURIAL GROUND

SOUTH WORPLE AVENUE

SOUTH WORPLE WAY

Residential Block A

Resi

Resi

Healthcare Hub

+ 15.310 M AOD
RIDGE

+ 12.840 M AOD
RIDGE

+ 14.280 M AOD
RIDGE

+ 11.480 M AOD
RIDGE

+ 15.750 M AOD
RIDGE

+ 16.350 M AOD
RIDGE

Residential Block B

Residential Block C

SEN School

+ 16.710 M AOD
RIDGE

+ 16.710 M AOD
RIDGE

+ 13.910 M AOD
RIDGE

SEN Footprint Revision	21/11/18	RB	C
SEN Footprint Revision	15/11/18	GH	B
HH Footprint Revision	31/10/18	GH	A
Revision description	Date	Check	Rev

SQUIRE & PARTNERS

The Department Store
 248 Ferndale Road, London SW9 8FR
 T: 020 7278 5555
 info@squireandpartners.com
 www.squireandpartners.com

Project
Barnes Hospital
 South Worple Way
 Barnes, SW14 8SU

Drawing
SEN School Option 2
 Proposed Maximum Storey Heights

Drawn	Date	Scale
SSI	21/11/2018	1: 250@A1 1: 500@A3
Job number	Drawing number	Revision
18002	C645_P_00_015	C





NOTES:
 DO NOT SCALE FROM THIS DRAWING.
 ALL DIMENSIONS TO BE CHECKED ON SITE.
 ALL OMISSIONS AND DISCREPANCIES TO BE REPORTED TO THE ARCHITECT IMMEDIATELY.

ALL RIGHTS RESERVED. THIS WORK IS COPYRIGHT AND CANNOT BE REPRODUCED OR COPIED OR MODIFIED IN ANY FORM OR BY ANY MEANS, GRAPHIC ELECTRONIC OR MECHANICAL, INCLUDING PHOTOCOPYING WITHOUT THE WRITTEN PERMISSION OF SQUIRE AND PARTNERS ARCHITECTS.

- - - - - Site Boundary
- Maximum Extent of Projecting Window Bays at First and Second Floor Levels
- Principal Massing

OLD MORTLAKE BURIAL GROUND

SEN Footprint Revision	21/11/18	RB	C
SEN Footprint Revision	15/11/18	GH	B
HH Footprint Revision	31/10/18	GH	A
Revision description	Date	Check	Rev

SQUIRE & PARTNERS
 The Department Store
 248 Ferndale Road, London SW9 8FR
 T: 020 7278 5555
 info@squireandpartners.com
 www.squireandpartners.com

Project
Barnes Hospital
 South Worple Way
 Barnes, SW14 8SU

Drawing
SEN School Option 2
 Maximum Building Extents

Drawn	Date	Scale
SSI	21/11/2018	1: 250@A1 1: 500@A3
Job number	Drawing number	Revision
18002	C645_P_00_016	C





NOTES:
 DO NOT SCALE FROM THIS DRAWING.
 ALL DIMENSIONS TO BE CHECKED ON SITE.
 ALL OMISSIONS AND DISCREPANCIES TO BE REPORTED TO THE ARCHITECT IMMEDIATELY.

ALL RIGHTS RESERVED. THIS WORK IS COPYRIGHT AND CANNOT BE REPRODUCED OR COPIED OR MODIFIED IN ANY FORM OR BY ANY MEANS, GRAPHIC ELECTRONIC OR MECHANICAL, INCLUDING PHOTOCOPYING WITHOUT THE WRITTEN PERMISSION OF SQUIRE AND PARTNERS ARCHITECTS.

- - - - Site Boundary
- - - - Cycle Access Route
- - - - Pedestrian Access Route
- Residential Short Stay Cycle Store
- Health Hub Visitor Cycle Store
- Health Hub Staff Cycle Store
- SEN School Visitor Cycle Store
- SEN School Staff Cycle Store

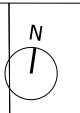
SEN Footprint Revision	21/11/18	RB	C
SEN Footprint Revision	15/11/18	GH	B
HH Footprint Revision	31/10/18	GH	A
Revision description	Date	Check	Rev

SQUIRE & PARTNERS
 The Department Store
 248 Ferndale Road, London SW9 8FR
 T: 020 7278 5555
 info@squireandpartners.com
 www.squireandpartners.com

Project
Barnes Hospital
 South Worple Way
 Barnes, SW14 8SU

Drawing
SEN School Option 2
 Proposed Pedestrian & Cycle
 Access Plan

Drawn	Date	Scale
RLe	21/11/2018	1: 250@A1 1: 500@A3
Job number	Drawing number	Revision
18002	C645_P_00_017	C





NOTES:
 DO NOT SCALE FROM THIS DRAWING.
 ALL DIMENSIONS TO BE CHECKED ON SITE.
 ALL OMISSIONS AND DISCREPANCIES TO BE REPORTED TO THE ARCHITECT IMMEDIATELY.

ALL RIGHTS RESERVED. THIS WORK IS COPYRIGHT AND CANNOT BE REPRODUCED OR COPIED OR MODIFIED IN ANY FORM OR BY ANY MEANS, GRAPHIC ELECTRONIC OR MECHANICAL, INCLUDING PHOTOCOPIING WITHOUT THE WRITTEN PERMISSION OF SQUIRE AND PARTNERS ARCHITECTS.

- - - - Site Boundary
- - - - Vehicular Access Route
- - - - Fire Engine Alternative Access
- Health Hub Car Parking Spaces
- SEN School Car Parking Spaces

OLD MORTLAKE BURIAL GROUND

SEN Footprint Revision	21/11/18	RB	C
SEN Footprint Revision	15/11/18	GH	B
HH Footprint Revision	31/10/18	GH	A
Revision description	Date	Check	Rev

SQUIRE & PARTNERS

The Department Store
 248 Ferndale Road, London SW9 8FR
 T: 020 7278 5555

Info@squireandpartners.com
 www.squireandpartners.com

Project
Barnes Hospital
 South Worple Way
 Barnes, SW14 8SU

Drawing
SEN School Option 2
 Proposed Vehicular Access Plan

Drawn	Date	Scale
SSI	21/11/2018	1:2500A1 1:2500B A3
Job number	Drawing number	Revision
18002	C645_P_00_018	C





NOTES:
 DO NOT SCALE FROM THIS DRAWING.
 ALL DIMENSIONS TO BE CHECKED ON SITE.
 ALL OMISSIONS AND DISCREPANCIES TO BE REPORTED TO THE ARCHITECT IMMEDIATELY.

ALL RIGHTS RESERVED. THIS WORK IS COPYRIGHT AND CANNOT BE REPRODUCED OR COPIED OR MODIFIED IN ANY FORM OR BY ANY MEANS, GRAPHIC ELECTRONIC OR MECHANICAL, INCLUDING PHOTOCOPYING WITHOUT THE WRITTEN PERMISSION OF SQUIRE AND PARTNERS ARCHITECTS.

- - - - - Site Boundary
- Open Space With Indicative Planting & Managed Public Access
- Private External Amenity Space
- Soft Landscaping
- Existing Trees Retained
- Existing Trees To Be Removed

SEN Footprint & Landscape Revision	21/11/18	RB	C
SEN Footprint Revision	15/11/18	GH	B
HH Footprint Revision	31/10/18	GH	A
Revision description	Date	Check	Rev

SQUIRE & PARTNERS

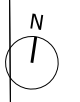
The Department Store
 248 Ferndale Road, London SW9 8FR
 T: 020 7278 5555

Info@squireandpartners.com
 www.squireandpartners.com

Project
Barnes Hospital
 South Worple Way
 Barnes, SW14 8SU

Drawing
SEN School Option 2
 Proposed Public Realm & Landscaping

Drawn	Date	Scale
RL	21/11/2018	1:250@A1 1:500@A3
Job number	Drawing number	Revision
18002	C645_P_00_019	C



1.4 Illustrative Masterplan Drawings

NOTES:
 DO NOT SCALE FROM THIS DRAWING.
 ALL DIMENSIONS TO BE CHECKED ON SITE.
 ALL OMISSIONS AND DISCREPANCIES TO BE REPORTED TO THE ARCHITECT IMMEDIATELY.

ALL RIGHTS RESERVED. THIS WORK IS COPYRIGHT AND CANNOT BE REPRODUCED OR COPIED OR MODIFIED IN ANY FORM OR BY ANY MEANS, GRAPHIC ELECTRONIC OR MECHANICAL, INCLUDING PHOTOCOPYING WITHOUT THE WRITTEN PERMISSION OF SQUIRE AND PARTNERS ARCHITECTS.

--- Site Boundary



SEN Footprint & Landscape Revision	21/11/18	RB	C
SEN Footprint Revision	15/11/18	GH	B
HH Footprint Revision	31/10/18	GH	A
Revision description	Date	Check	Rev

SQUIRE & PARTNERS

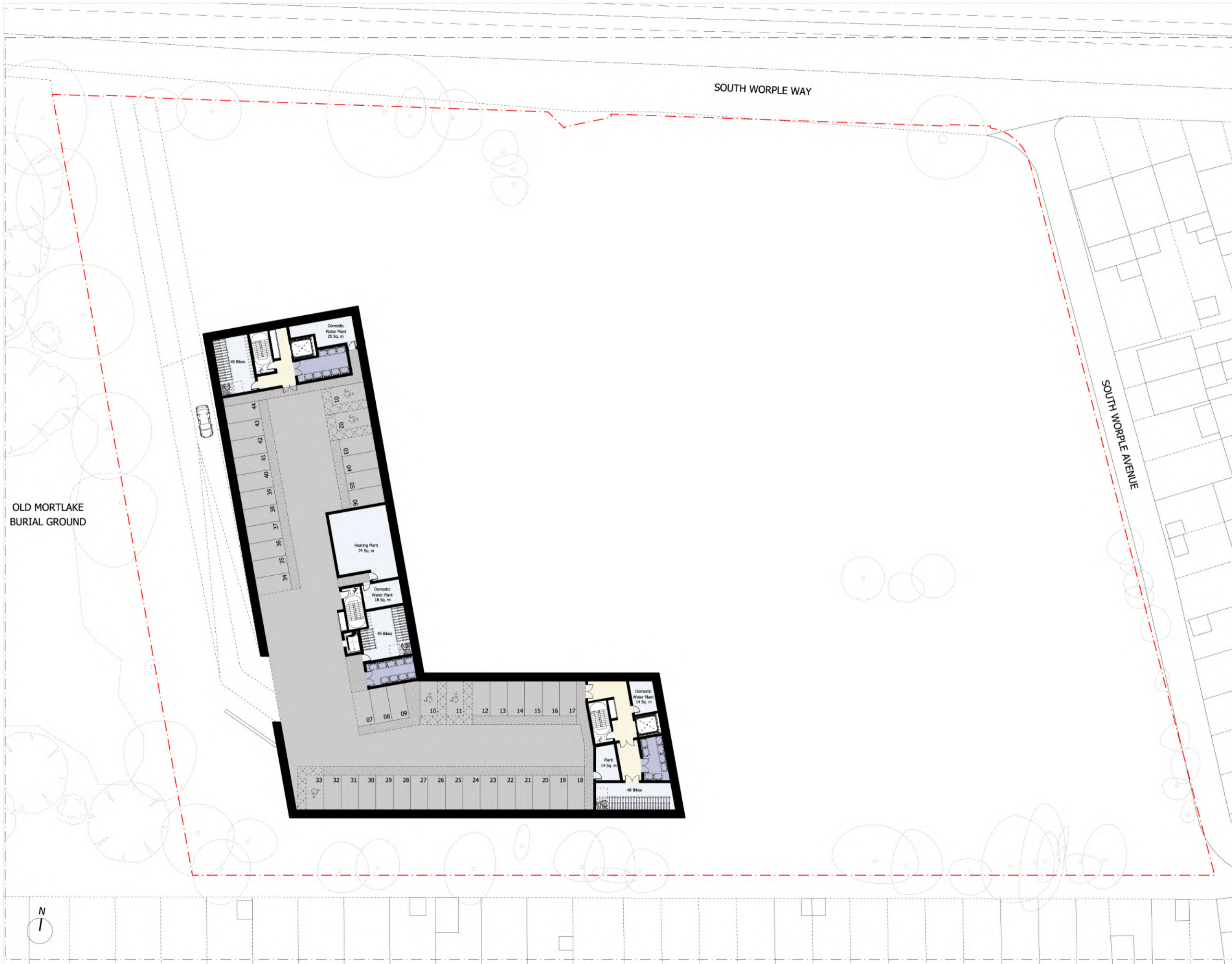
The Department Store
 248 Ferndale Road, London SW9 8FR
 T: 020 7278 5555
 info@squireandpartners.com
 www.squireandpartners.com

Project
Barnes Hospital
 South Worple Way
 Barnes, SW14 8SU

Drawing
Proposed Ground Floor

Drawn	Date	Scale
SSI	21/11/2018	1: 250@A1 1: 500@A3
Job number	Drawing number	Revision
18002	G200_P_00_001	C





NOTES:
 DO NOT SCALE FROM THIS DRAWING.
 ALL DIMENSIONS TO BE CHECKED ON SITE.
 ALL OMISSIONS AND DISCREPANCIES TO BE REPORTED TO THE ARCHITECT IMMEDIATELY.
 ALL RIGHTS RESERVED. THIS WORK IS COPYRIGHT AND CANNOT BE REPRODUCED OR COPIED OR MODIFIED IN ANY FORM OR BY ANY MEANS, GRAPHIC ELECTRONIC OR MECHANICAL, INCLUDING PHOTOCOPYING WITHOUT THE WRITTEN PERMISSION OF SQUIRE AND PARTNERS ARCHITECTS.

--- Site Boundary

Revision description	Date	Check	Rev
----------------------	------	-------	-----

SQUIRE & PARTNERS

The Department Store
 248 Ferndale Road, London SW9 8FR
 T: 020 7278 5555
 info@squireandpartners.com
 www.squireandpartners.com

Project
Barnes Hospital
 South Worple Way
 Barnes, SW14 8SU

Drawing
Proposed
 Lower Ground Floor

Drawn	Date	Scale
RLe	25/10/2018	1:250(A1)
Job number	Drawing number	Revision
18002	G200_P_LG_001	-

NOTES:
 DO NOT SCALE FROM THIS DRAWING.
 ALL DIMENSIONS TO BE CHECKED ON SITE.
 ALL OMISSIONS AND DISCREPANCIES TO BE REPORTED TO THE ARCHITECT IMMEDIATELY.

ALL RIGHTS RESERVED. THIS WORK IS COPYRIGHT AND CANNOT BE REPRODUCED OR COPIED OR MODIFIED IN ANY FORM OR BY ANY MEANS, GRAPHIC ELECTRONIC OR MECHANICAL, INCLUDING PHOTOCOPYING WITHOUT THE WRITTEN PERMISSION OF SQUIRE AND PARTNERS ARCHITECTS.



Revision description	Date	Check	Rev
----------------------	------	-------	-----

SQUIRE & PARTNERS

The Department Store
 248 Ferndale Road, London SW9 8FR
 T: 020 7278 5555
 info@squireandpartners.com
 www.squireandpartners.com

Project
Barnes Hospital
 South Worple Way
 Barnes, SW14 8SU

Drawing
Proposed
 West Elevation
 Facing Burial Ground

Drawn	Date	Scale
SSI	29/10/2018	1: 250@A1 1: 500@A3
Job number	Drawing number	Revision
18002	G200_E_W_001	-



1.5 Schedule of Areas

Barnes Outline GIA Schedule -

GIA Sq.m

Total Existing Floor Space	6,952 Sq.m *
Floorspace to be demolished	6,714 Sq.m *
Floorspace to be retained	238 Sq.m *
New Build Floorspace Health Hub	2,500 Sq.m
New Build Floorspace SEN	2,402 Sq. m
New Build Floorspace Residential	6,918 Sq. m
Total Floorspace of New Facilities	12,058 Sq. m*

*All areas are based on scaled drawings and therefore are indicative.

SQUIRE & PARTNERS

The Department Store

248 Ferndale Road, London SW9 8FR

020 7278 5555 info@squireandpartners.com

www.squireandpartners.com