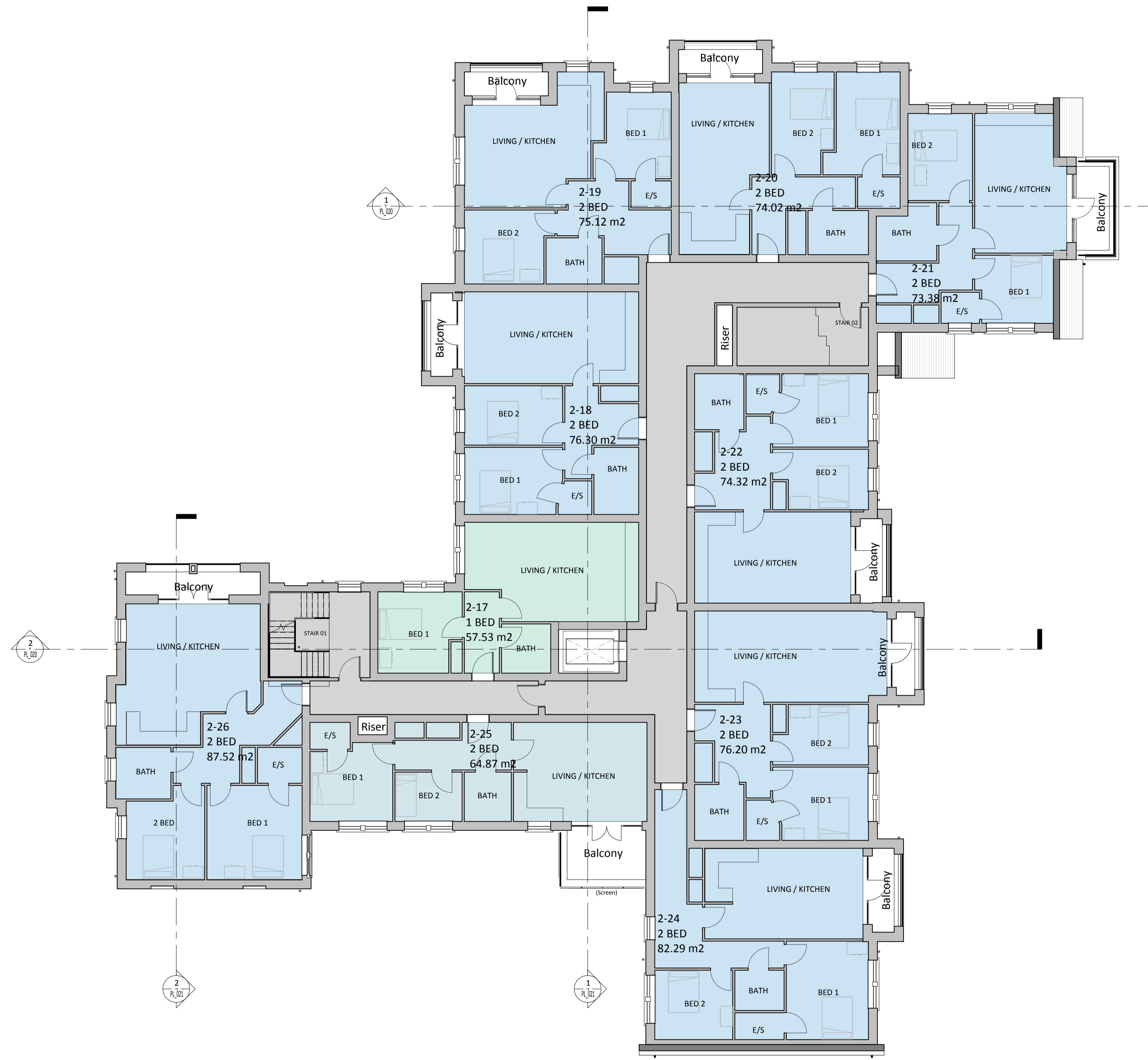


Revisions:	Drawn / Chkd:	Date:
P1 Revision 1		Date
P2 Layout amended		20/08/18
P3 Layout amended to maximise capacity of units		22/08/18
P4 Updated to Council comments. Basement lift added as agreed with client.	MAS	21/12/18
P5 Information Issue	MAS	09/01/19



- KEY:**
- 1Bed 2People Apartment
 - 2Bed 3People Apartment
 - 2Bed 4People Apartment
 - 2Bed + Study (3Bed) Apartment
 - Communal Space
 - Circulation

Client:
The Sons of Divine Providence Developments Ltd

Project:
12-14 Station Road & 13, 19-33 Lower Teddington Road

24 Church St. West, Woking, Surrey, GU21 6HT
01483 494 350
info@prc-group.com
www.prc-group.com



Drawing Title:
Second Floor Plan

Scale @ A1: As indicated
Checked by: MAS
Date: 08/13/18

Job No: 10901
Stage_Drawing No: PL_013
Rev: P5

Issue Status:
Construction Preliminary
Information Approval
Tender

Architecture
Planning
Master Planning
Urban Design
Interiors
Landscape

Offices
Woking
London
Milton Keynes
Warsaw

PRC Architecture & Planning
09/01/2019 11:31:07

Second Floor Plan
1 : 100

