

This drawing is copyright and owned by Brookes Architects Limited and is for use on this site only unless contractually stated otherwise.

Contractors must check all dimensions from site.

All other design team elements, where indicated, have been imported from the consultants drawings and reference should be made to the individual consultants drawings for exact setting out, size and type of component.

Discrepancies and / or ambiguities within this drawing, between it and information given elsewhere, must be reported immediately to the architect for clarification before proceeding.

All works are to be carried out in accordance with the latest British Standards and Codes of practice unless specifically directed otherwise in the specification.

Responsibility for the reproduction of this drawing in paper form, or if issued in electronic format, lies with the recipient to check that all information has been replicated in full and is correct when compared to the original paper or electronic image. Graphical representations of equipment on this drawing have been co-ordinated, but are approximations only. Please refer to Specifications and / or Details for actual sizes and / or specific contractor construction information.

This original document is issued for the purpose indicated below and contains information of a confidential nature. Further copies and circulation will be strictly in accordance with the confidentiality agreement under the contract. This original must be destroyed or returned to the originator.

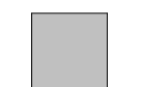
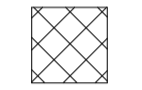
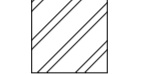
**SAFETY, HEALTH AND ENVIRONMENTAL INFORMATION**

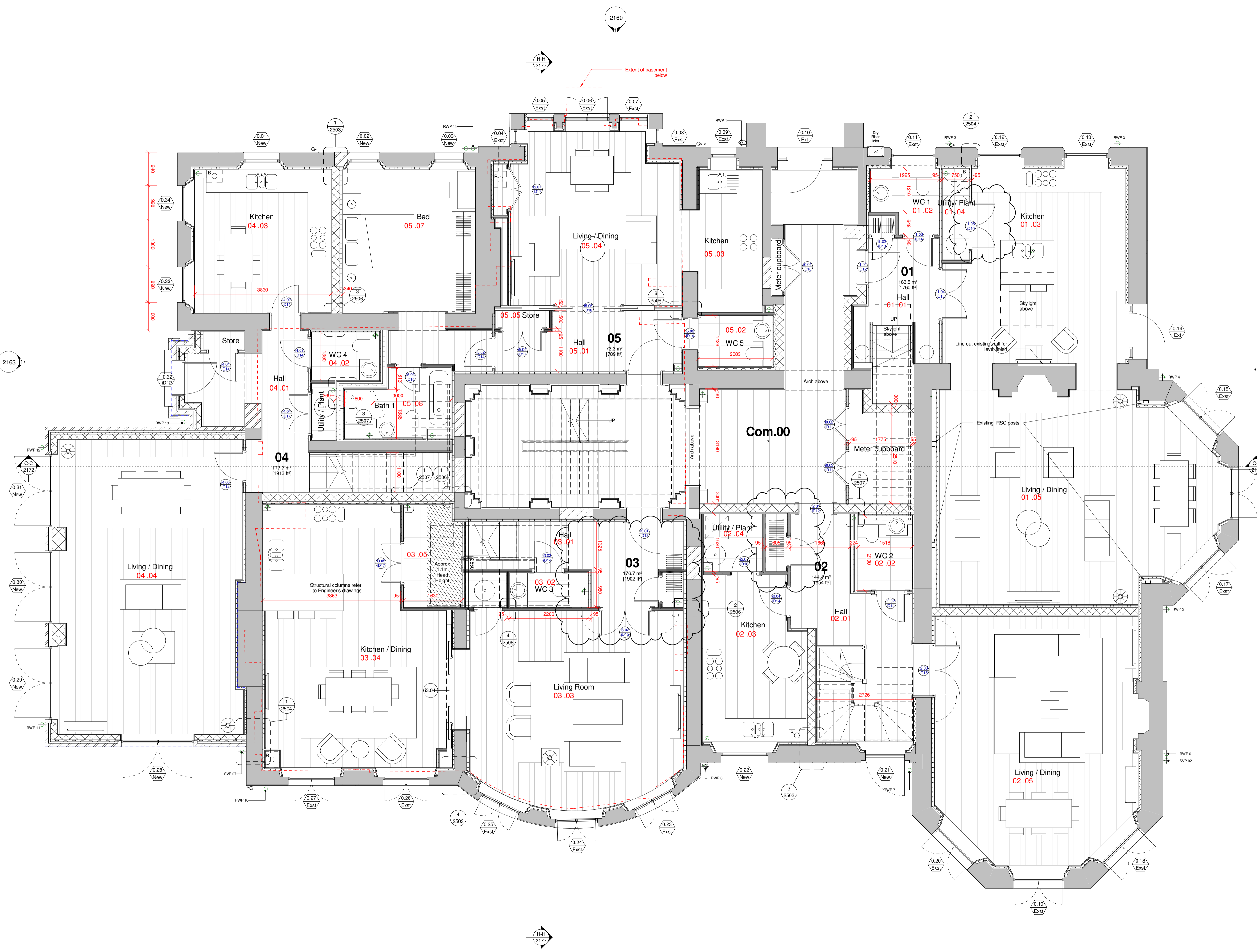
Refer to the relevant Construction (Design and Management) documentation where applicable.

It is assumed that all works on this drawing will be carried out by a competent contractor working, where necessary, to an approved method statement.

**Note:** Extent of repair works subject to full conditional survey.

Refer to schedule 4904\_4\_2600 for external opening sizes.

-  Existing Building Fabric
-  New dense blockwork
-  New brickwork



2161

2172



**FOR CONSTRUCTION**

Rev	Description	Date	PN	PN
B	Internal changes Unit 1.2 & 3	23.10.18	PN	PN
A	Construction	24.09.18	PN	PN
Rev	Description	Issued	Dwn	Chk

Client  
**Berkeley Homes**

Project  
**Latchmere House Refurb**  
**Latchmere Lane**  
**Kingston KT2 5NX**

Drawing  
**GA Plan**  
**Ground Floor**

Scale	Date	Drawn	Checked
1 : 50@A1	Oct '17	AO	TL

**Brookes Architects**

Upstairs at The Grange  
Bank Lane, London SW15 5JT  
T 020 8487 1223  
F 020 8876 4172  
E info@brookesarchitects.co.uk  
www.brookesarchitects.co.uk