

This drawing is copyright and owned by Brookes Architects Limited and is for use on this site only unless contractually stated otherwise.

Contractors must check all dimensions from site.

All other design team elements, where indicated, have been imported from the consultants drawings and reference should be made to the individual consultants drawings for exact setting out, size and type of component.

Discrepancies and / or ambiguities within this drawing, between it and information given elsewhere, must be reported immediately to the architect for clarification before proceeding.

All works are to be carried out in accordance with the latest British Standards and Codes of practice unless specifically directed otherwise in the specification.

Responsibility for the reproduction of this drawing in paper form, or if issued in electronic format, lies with the recipient to check that all information has been replicated in full and is correct when compared to the original paper or electronic image. Graphical representations of equipment on this drawing have been co-ordinated, but are approximations only. Please refer to Specifications and / or Details for actual sizes and / or specific contractor construction information.

This original document is issued for the purpose indicated below and contains information of a confidential nature. Further copies and circulation will be strictly in accordance with the confidentiality agreement under the contract. This original must be destroyed or returned to the originator.




SAFETY, HEALTH AND ENVIRONMENTAL INFORMATION

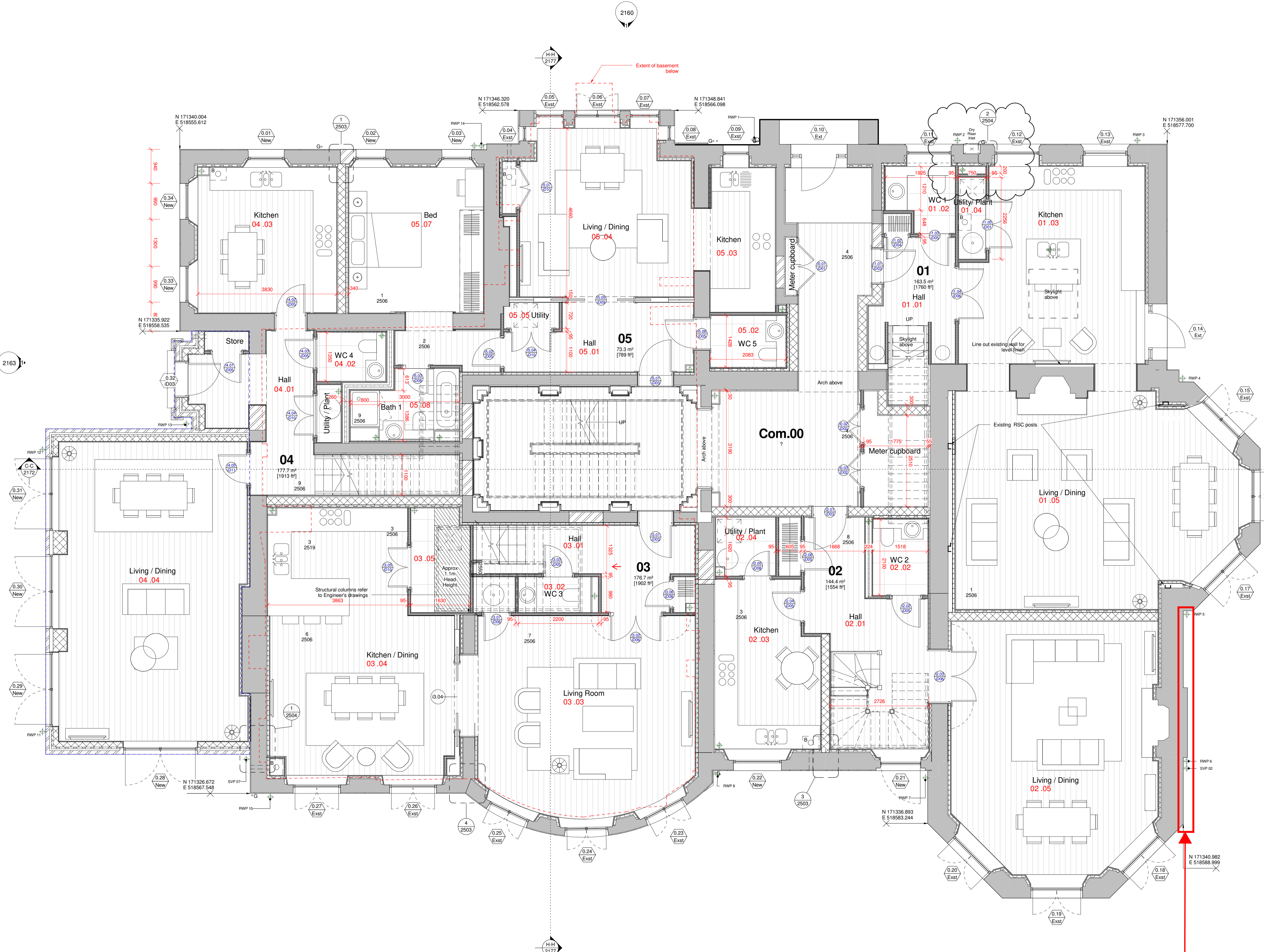
Refer to the relevant Construction (Design and Management) documentation where applicable.

It is assumed that all works on this drawing will be carried out by a competent contractor working, where necessary, to an approved method statement.

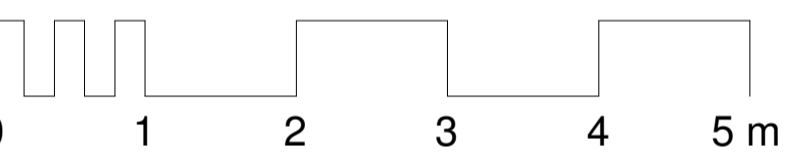
Note: Extent of repair works subject to full conditional survey.

Refer to schedule 4904_4_2600 for external opening sizes.

-  Existing Building Fabric
-  New dense blockwork
-  New brickwork



2161



FOR CONSTRUCTION

Rev	Description	Issued	PN	PN
F	Boxing out to Unit 1 Utility	19.11.18	PN	PN
E	Unit 1 Skylight Positions. Unit 5 Utility room size.	12.11.18	PN	PN
D	Internal Junction IDs	02.11.18	PN	PN
D	Door IDs changed to match door schedule	02.11.18	PN	PN
C	Coordinate Levels added	31.10.18	PN	PN
B	Internal changes Unit 1.2 & 3	23.10.18	PN	PN
A	Construction	24.09.18	PN	PN

Client
Berkeley Homes

Project
Latchmere House Refurb
Latchmere Lane
Kingston KT2 5NX

Drawing
GA Plan
Ground Floor

Scale	Date	Drawn	Checked
1 : 50@A1	Oct '17	AO	TL

Brookes Architects

Upstairs at The Grange
Bank Lane, London SW15 5JT
T 020 8487 1223
F 020 8876 4172
E info@brookesarchitects.co.uk
www.brookesarchitects.co.uk

Location of mortar / pointing samples