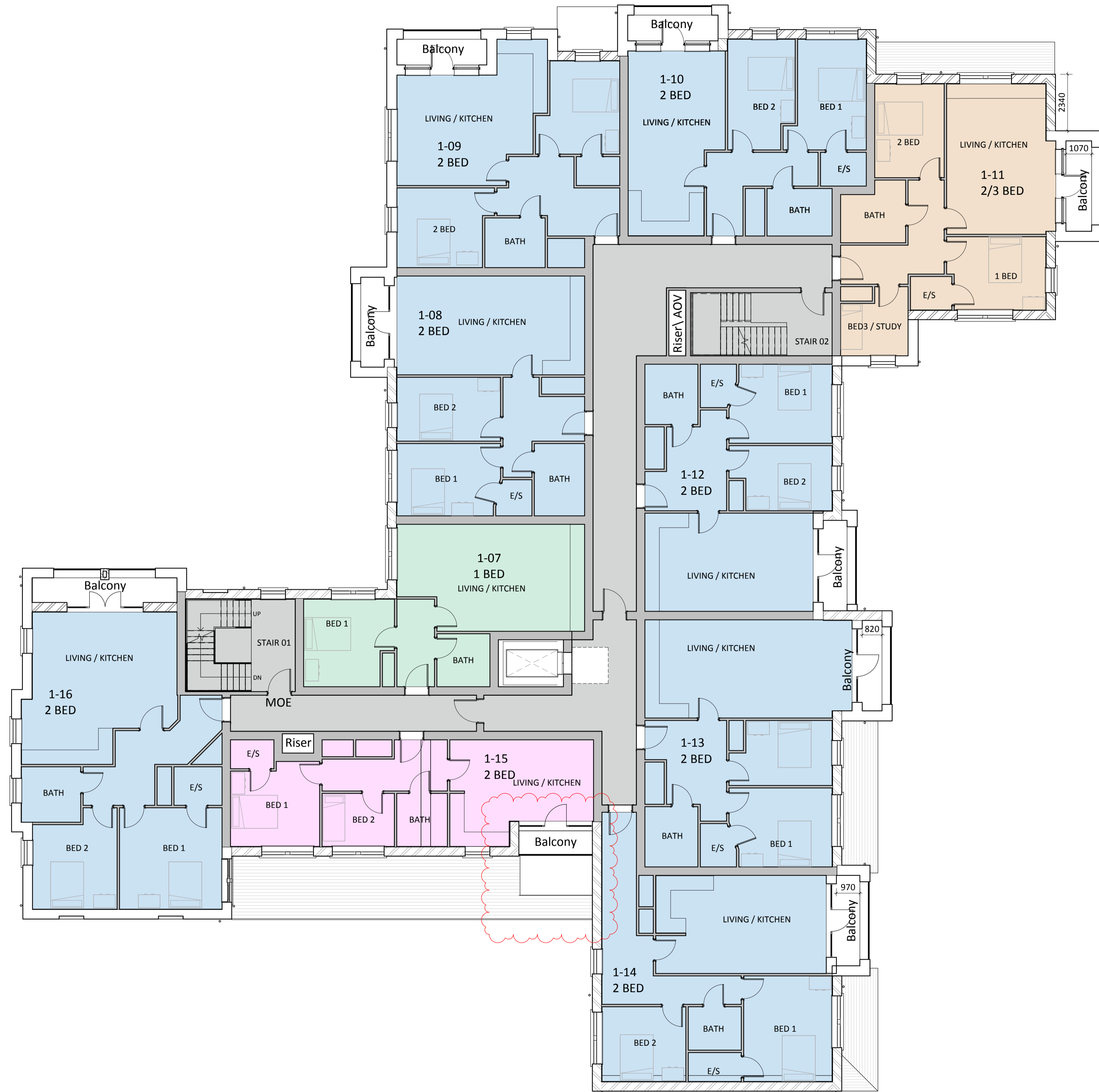


Revisions:	Drawn / Chkd:	Date:
P1 Revision 1		Date
P2 Layout amended		20/08/18
P3 Updated to Council comments. Basement lift added as agreed with client.	MAS	21/12/18
P4 Information Issue	MAS	09/03/19
P5 Roofscape Amended	MAS	05/03/19



- KEY:**
- 1Bed 2People Apartment
  - 2Bed 3People Apartment
  - 2Bed 4People Apartment
  - 2Bed + Study (3Bed) Apartment
  - Communal Space
  - Circulation

Client:  
The Sons of Divine Providence Developments Ltd



Project:  
12-14 Station Road & 13, 19-33 Lower Teddington Road

24 Church St. West, Woking, Surrey, GU21 6HT  
01483 494 350

Drawing Title:  
First Floor Plan

info@prc-group.com  
www.prc-group.com

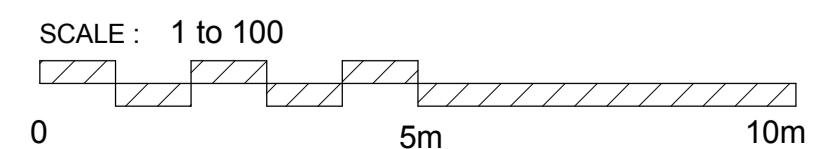
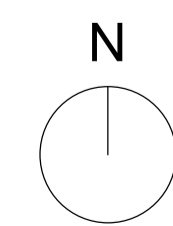
Scale @ A1: As indicated  
Checked by: MAS  
Date: 08/13/18

Architecture  
Planning  
Master Planning  
Urban Design  
Interiors  
Landscape

Job No: 10901  
Stage\_Drawing No: PL\_012  
Rev: P5

Issue Status:  
Construction  Preliminary   
Information  Approval   
Tender

Offices  
Woking  
London  
Milton Keynes  
Warsaw



Note: This maybe a reduced sized print, check scales below

First Floor Plan  
1 : 100