

## Outline Specification Notes

### General

Plant material all plants shall conform to the relevant British standards: BS 3936 and BS 5326. All plants shall be true to form, type, size, healthy, vigorous, pest and weed free. No substitutes in size or type shall be made without written consent of the landscape architect.

**Planting Guidelines-** All planting and landscape operations should comply with the requirements specified in BS 3936:1992 'Nursery Stock (Part One)' and BS 4428:1989 'Code of Practice for General Landscape Operations (excluding hard surfaces)' and BS 8545: 'From Nursery to Independence in the Landscape'

- All reused existing or imported topsoil shall be tested by approved 'Topsoil Analyst to conform to BS 3882:2007 Specification for Topsoil and Requirements for Use'. Any required amelioration or soil improvement to be carried out in line with Analyst's report.  
 - Topsoil storage mounds shall be in accordance with NBS landscape specification - locations are to be confirmed with Contractor.

- All fertilizers are to be applied or supervised by qualified staff to avoid the action of phytomolysis.

### Maintenance Notes - Overview

All landscaped areas are to be maintained for 24 months following practical completion of the phase or until the plants have established, all tree planting to be maintained for 36 months.

Planting to be protected from mammal and human damage by stock proof fencing.

All planted areas to be kept clear of weeds at all times throughout maintenance period.

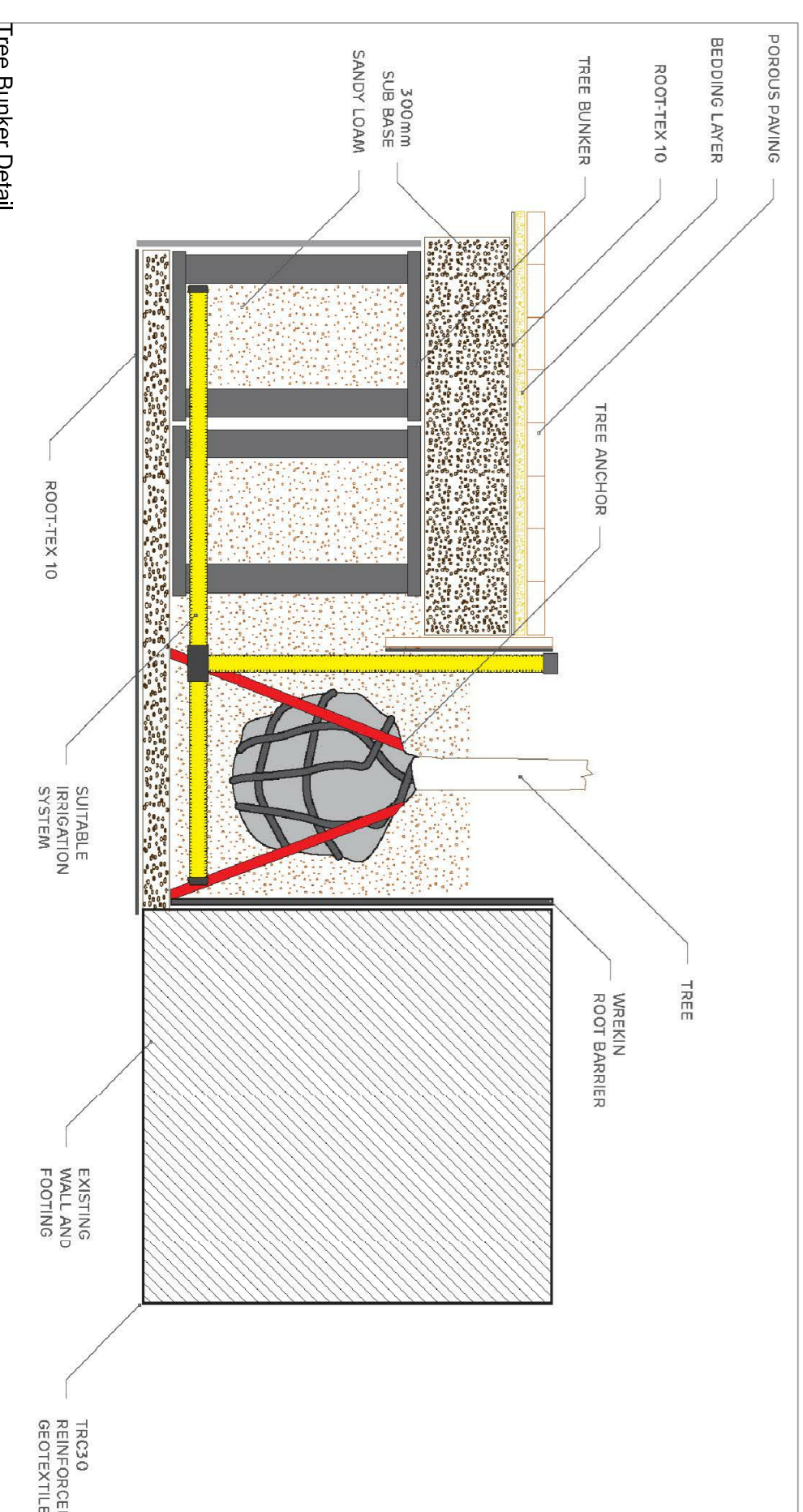
Planted areas to be forked through regularly to keep soil loose and aerated.

All litter and debris to be removed from landscaped areas and carted off site.

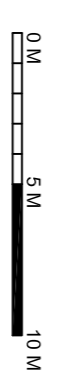
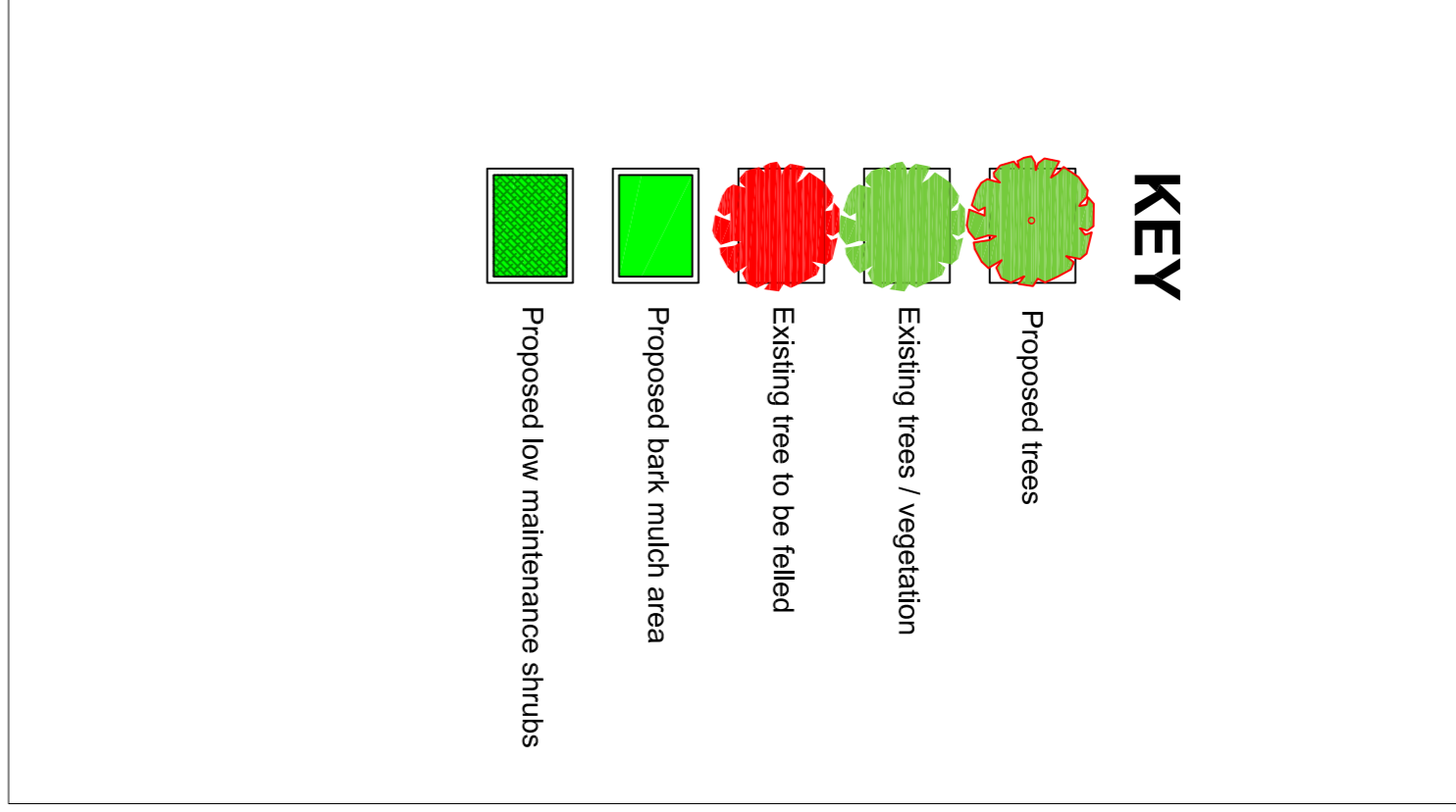
Plants pruned as instructed by the Landscape Architect to promote healthy growth and to remove dead and diseased wood.

Watering as required to maintain healthy growth. (allow for 12No. watering minimum).

Any species that dies or fails to establish in the first five years should be replaced by an identical species, or alternative species as agreed otherwise.



Trees	Number	Density	Height	Girth	Pot Size
Carpinus betulus 'Frans Fontaine'	2	4-6 ll	4m	12-14 cm	70
Acer campestre 'Eisrijk'	6	4-6 ll	4m	12-14 cm	90
Betula pendula	11	4-6 ll	4m	12-14 cm	90
Sorbus aucuparia	2	4-6 ll	4m	12-14 cm	70
<b>Ground Cover Shrubs</b>					
Helle pingüfolia 'Pagel'	95	3m <sup>2</sup>	50 cm		3li
Coloreaster dammeri	95	3m <sup>2</sup>	50 cm		3li
Eunymus fortunei 'Silver Queen'	95	3m <sup>2</sup>	50 cm		3li
Juniperus pfitzeriana	95	3m <sup>2</sup>	50 cm		3li



**SPECIFICATION**

All planting stock and trees should comply & be carried out in accordance to the following:

- Following 'Completion Practice note 8.
- Native species from local stock.
- Native trees and shrubs certified as British Native plant stock.
- Horticultural Trade Association National Plant specification.
- Planting preparation, handling, planting & maintenance to the CPSE Code for Best Practice and Establishing plants.
- Plants to be in accordance with engineers specification.
- Planned to BS 4428:1989.
- Imported topsoil to be mounded towards the centre of each bed to allow for settlement.
- On completion of planting, shrub beds mulched with 75mm consolidated mulches of medium to coarse grade natural pine bark (see the duration of the construction period).
- Existing trees and hedges to be protected in accordance with BS8637:2005 for the duration of the construction period.
- Tree distances to be in accordance with engineers specification.
- For more details on the spec see the accompanying notes.

**Landmark Trees**

Hidden House, 4th Floor, 57 Rathbone Place, London, W1T 1JU  
 Tel: 0207 851 4544 Mobile: 07812 89928  
 e-mail: info@landmarktrees.co.uk Web: www.landmarktrees.co.uk

Site: LHM Fulwell  
 Drawing Title: Landscape Plan  
 1:250 @ A1  
 March 2019