



Planning Perspective 01A  
1 : 1



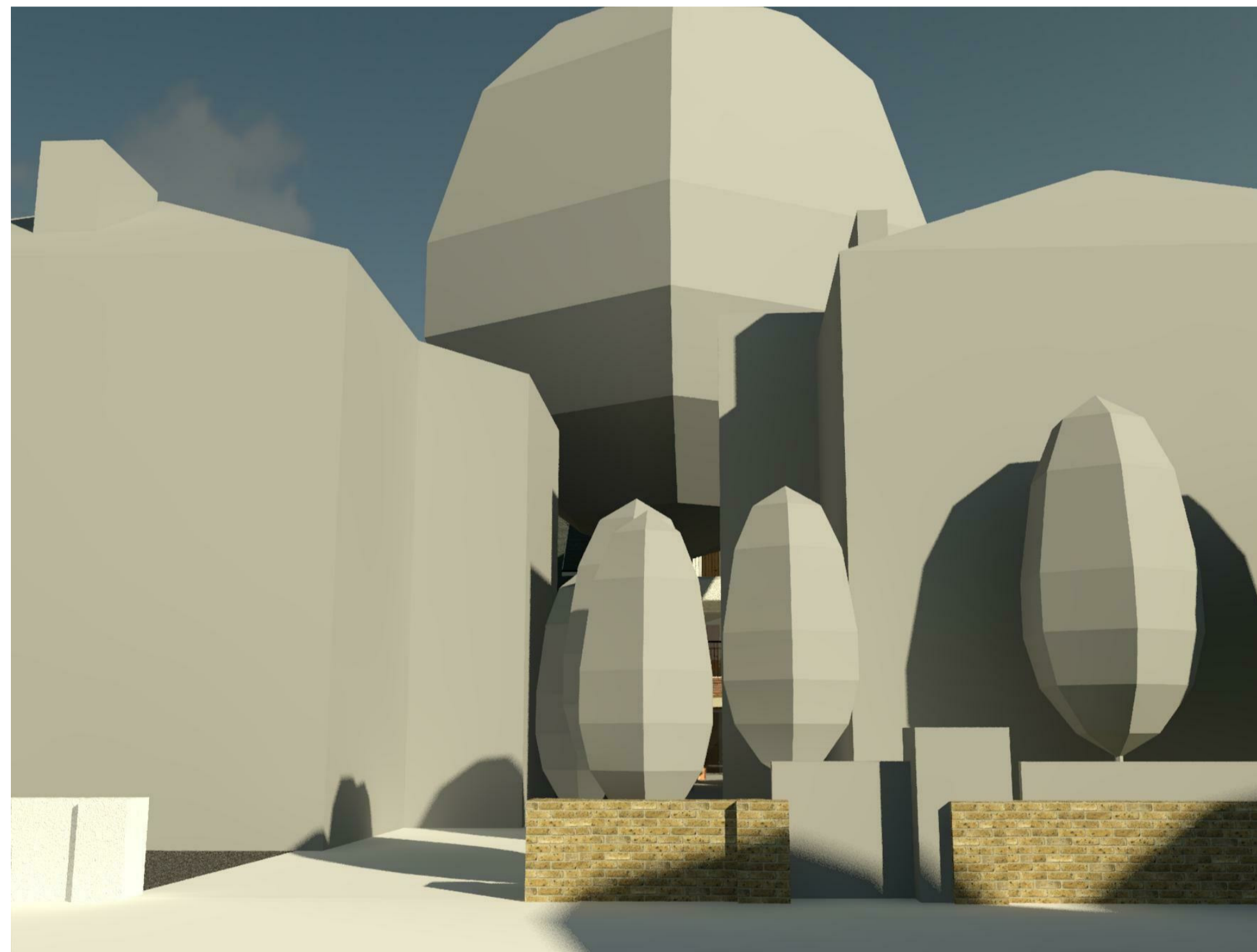
Planning Perspective 02B  
1 : 1



Planning Perspective 03B  
1 : 1



Planning Perspective 04A  
1 : 1



Planning Perspective 05A  
1 : 1

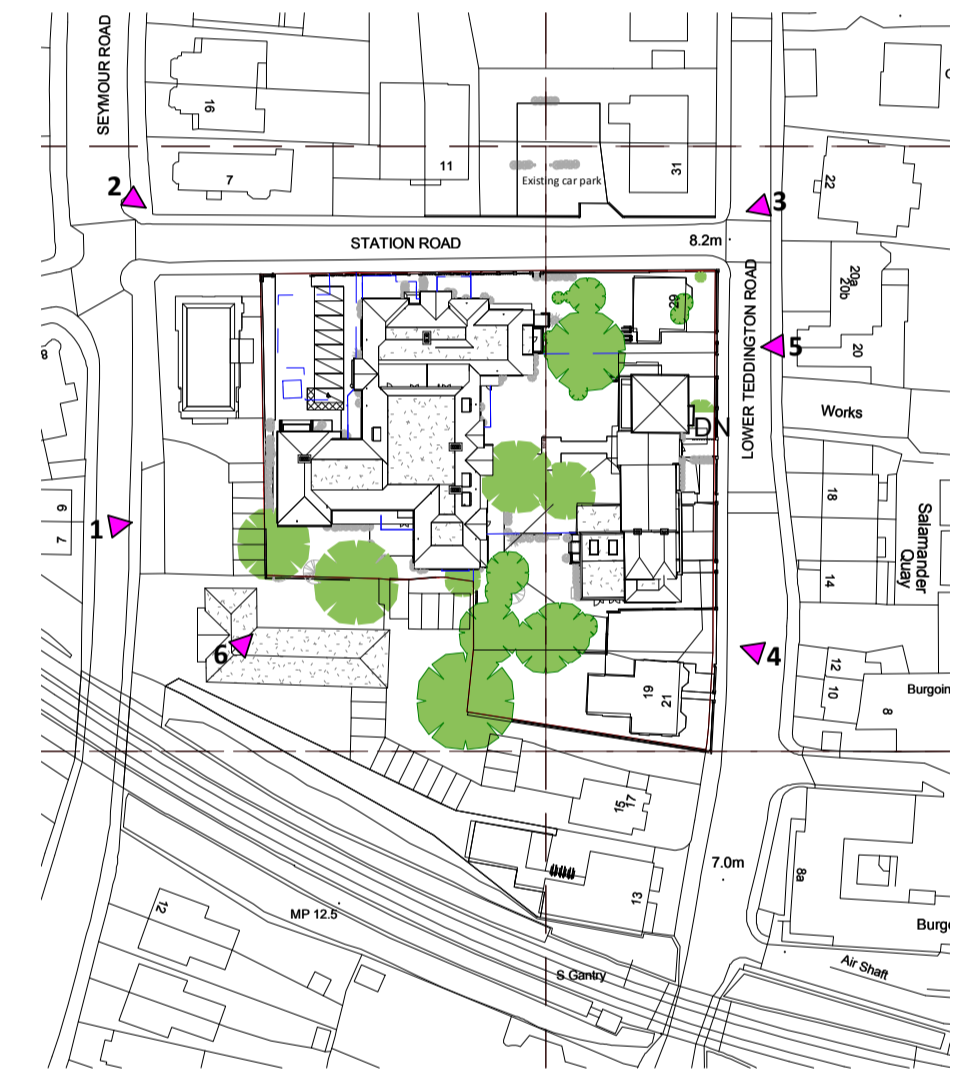


Planning Perspective 06  
1 : 1

Figured dimensions only are to be used. All dimensions to be checked onsite. Differences between drawings and between drawings and specification or bills of quantities to be reported to the PRC Group.

The copyright of the drawings and designs contained herein remains vested in the PRC Group.

| Revisions:                           | Drawn / Chkd: | Date:    |
|--------------------------------------|---------------|----------|
| P1 Revised to LPA preapp comments    | MAS           | 22/11/18 |
| P2 Planning Issue                    | MAS           | 11/01/19 |
| P3 Views 2 & 3 updated. View 6 added | MC            | 27/03/19 |



Location Plan  
1 : 1250

Client:  
The Sons of Divine Providence  
Developments Ltd



Project:  
12-14 Station Road & 13,  
19-33 Lower Teddington Road

24 Church St. West,  
Woking, Surrey,  
GU21 6HT  
01483 494 350

info@prc-group.com  
www.prc-group.com

Drawing Title:  
Street Massing  
Perspectives

Scale @ A1: As indicated  
Checked by: MAS  
Date: 11/22/18

Job No: 10901  
Stage\_Drawing No: PL\_203  
Rev: P3

Issue Status:  
Construction  Preliminary   
Information  Approval   
Tender

Architecture  
Planning  
Master Planning  
Urban Design  
Interiors  
Landscape

Offices  
Woking  
London  
Milton Keynes  
Warsaw