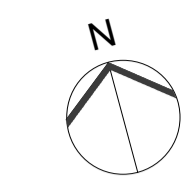
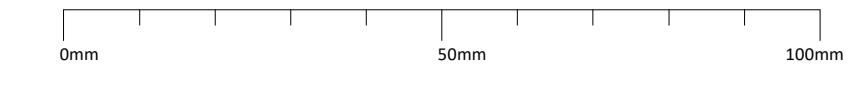
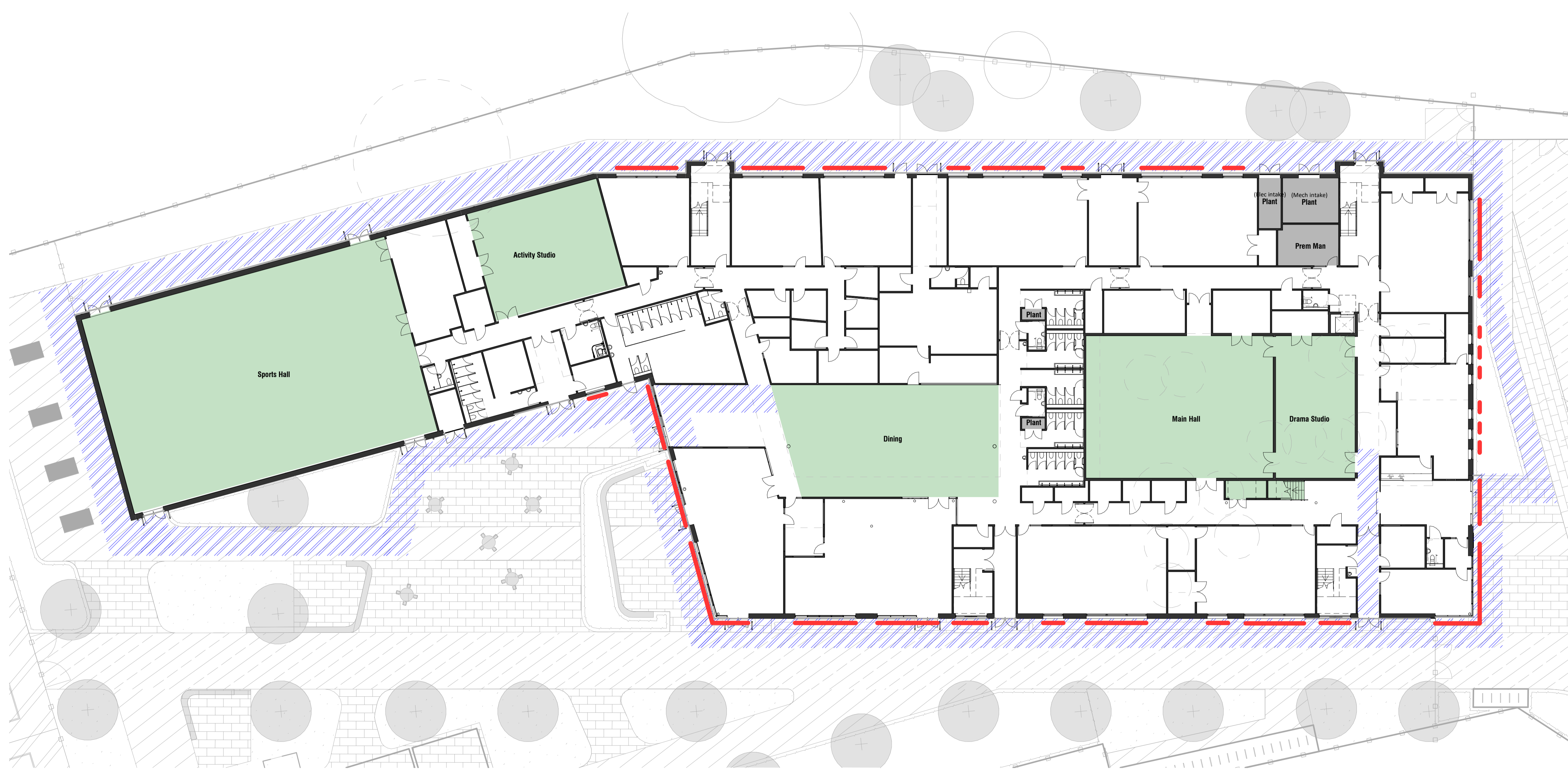


Responsibility is not accepted for errors made by others in scaling from this drawing.  
All construction information should be taken from figured dimensions only.



KEY	
	Operational area for window cleaning via poles from ground within 2.6m hardstanding area. Zone used to accommodate MEWP route
	Roof access walkway complete with Mansafe (or similar) personal safety system
	Windows to be cleaned with handpole from operational area
	Roof items to be cleaned with handpole from flat roof
	Mansafe(or similar) fall restraint system
	Railing edge guarding the roof
	ppc aluminium preformed edge flashing with concealed fixings
	High level spaces requiring MEWP access for periodic maintenance of lights, roof light cleaning etc.
	Facilities Maintenance spaces.
	No regular access for safety protection
	Dropped roofs level access from second floor
	Solar Panels - 500m2 face area
	Ladder access to roof
	Stair access to roof
	Cleaners' Stores dispersed
	Access hatch with ladder up post



AUTHOR	CHECK	DATE	DESCRIPTION
CB	CM	05.07.18	Revised to show landscape CAD
CB	CM	17.04.18	ITT Issue
CB	CM	13.04.18	ITT Draft

CLIENT	REVISOR
Bowmer & Kirkland	AL
	CHECKED BY
	CB
	ORIGINATOR NO
	151547

CONSULTANT  
**STRIDE TREGLOWN**  
 www.stride-treglow.com © Stride Treglow Limited 2016  
 PROJECT  
 Turing House School  
 Twickenham

DRAWING TITLE  
**Cleaning & Maintenance Strategy - Ground Floor Plan**

SUITABILITY STATUS	SCALE
	1 : 200 @ A1

PROJECT   ORIGINATOR   ZONE   LEVEL   TYPE   ROLE   NUMBER	REVISION
FS0316-STL-ZZ-00-DR-A-8401	P03