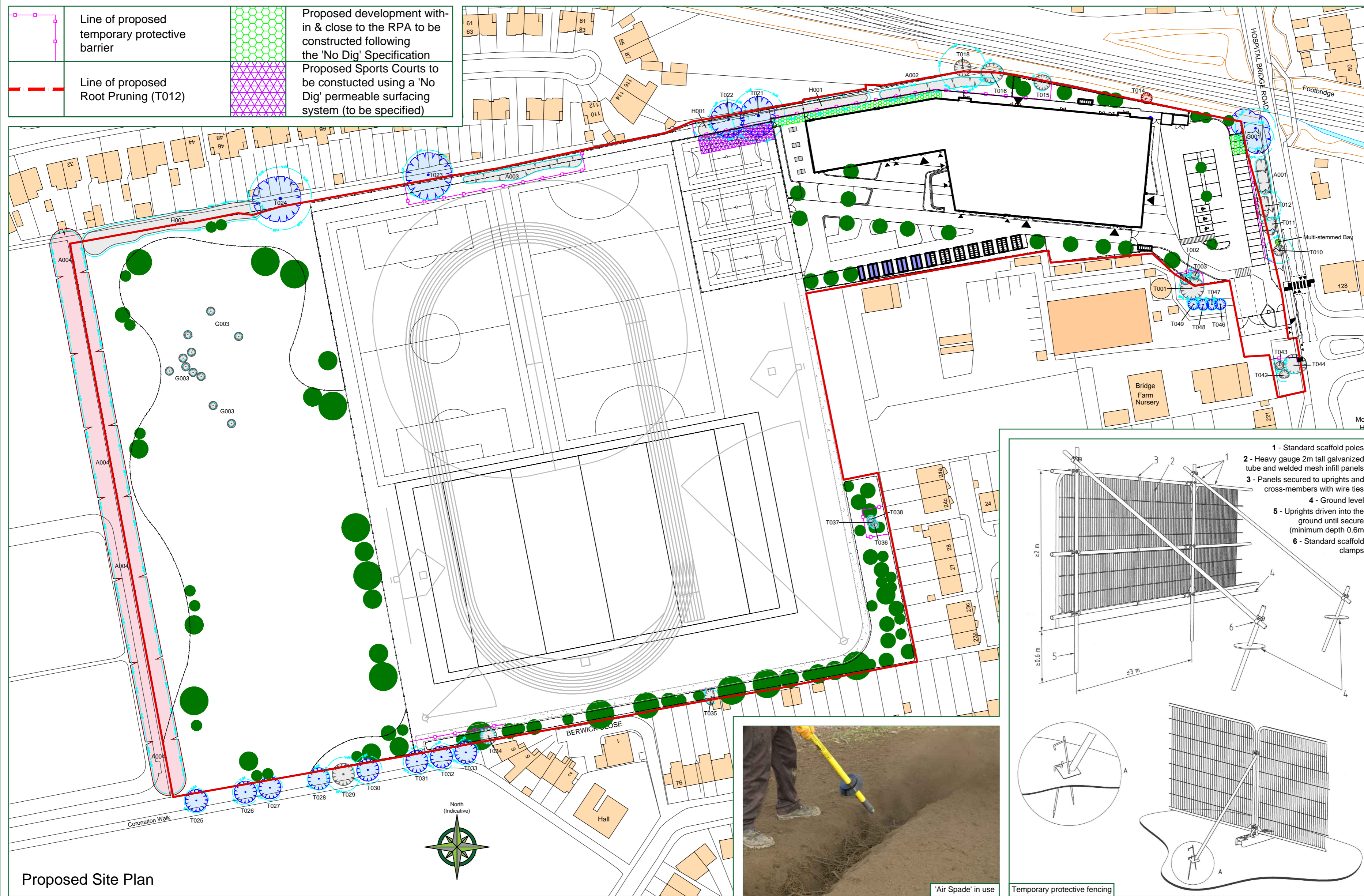
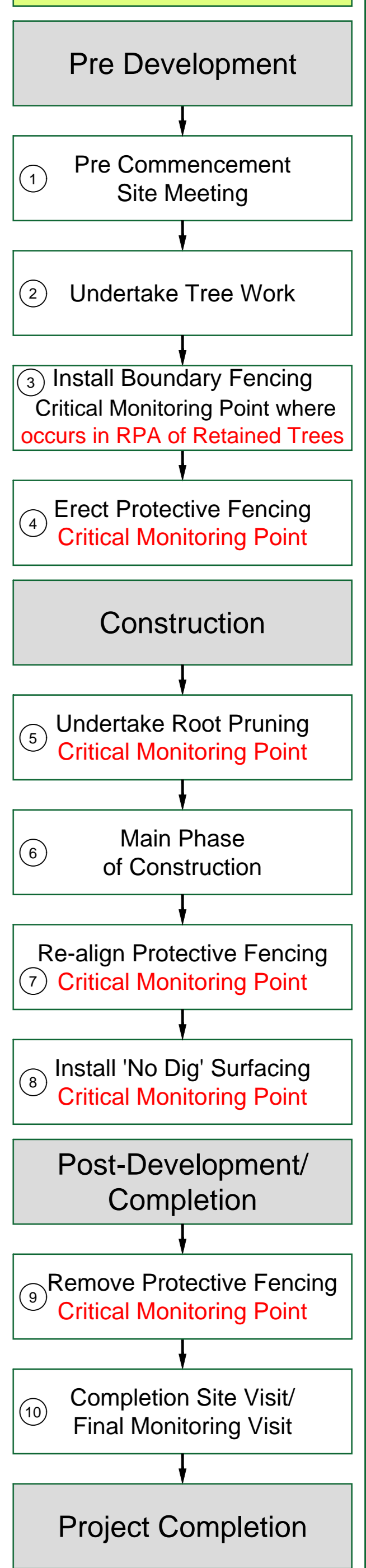


Existing Site Plan

LEGEND	
	Existing Tree/Hedge BS 5837:2012 Category B
	Existing Tree/Hedge to be crown lifted for 2.5m to facilitate boundary fencing BS 5837:2012 Category B
	Existing Tree/Hedge BS 5837:2012 Category C
	Existing Tree/Hedge to be crown lifted for 2.5m to facilitate boundary fencing BS 5837:2012 Category C
	Existing Tree/Hedge BS 5837:2012 Category U
	Line of Root Protection Area (RPA) - calculated following guidelines set in BS 5837:2012
	Existing Tree/Hedge to be Removed BS 5837:2012 Category U
	Existing Tree/Hedge BS 5837:2012 Category U Removal recommended if agreed by owner of tree
	Existing Tree/Hedge to be removed to allow for development BS 5837:2012 Category B
	Existing Tree/Hedge to be removed to allow for development BS 5837:2012 Category C
	Existing Tree/Hedge to be removed to allow for development BS 5837:2012 Category U
	Additional feature which doesn't meet BS 5837:2012 categorisation but is included for reference

CATEGORY AND DEFINITION	
Trees unsuitable for retention	
Category U	Trees in such condition that they cannot realistically be retained as living trees in the current land use for longer than 10 years
Trees to be considered for retention	
Category A	Trees of high quality with an estimated remaining life expectancy of at least 40 years
Category B	Trees of moderate quality with an estimated remaining life expectancy of at least 20 years
Category C	Trees of low quality with an estimated remaining life expectancy of at least 10 years, or young trees with a stem diameter below 150mm
NOTE:	
Hayden's Arboricultural Consultants were provided with a Topographical Survey but these do not always show the positions of all the trees/features on site. The locations of any additional features have been fixed using GPS. As such the position of the trees/landscape features should not be taken as exact but gives a fair distribution of their locations on site.	
The position, condition, and dimensions of the trees are based on a site survey undertaken on 08/08/18	
"The original of this drawing was produced in colour - a monochrome copy should not be relied upon"	

Method Statement Flow Chart



Proposed Site Plan

