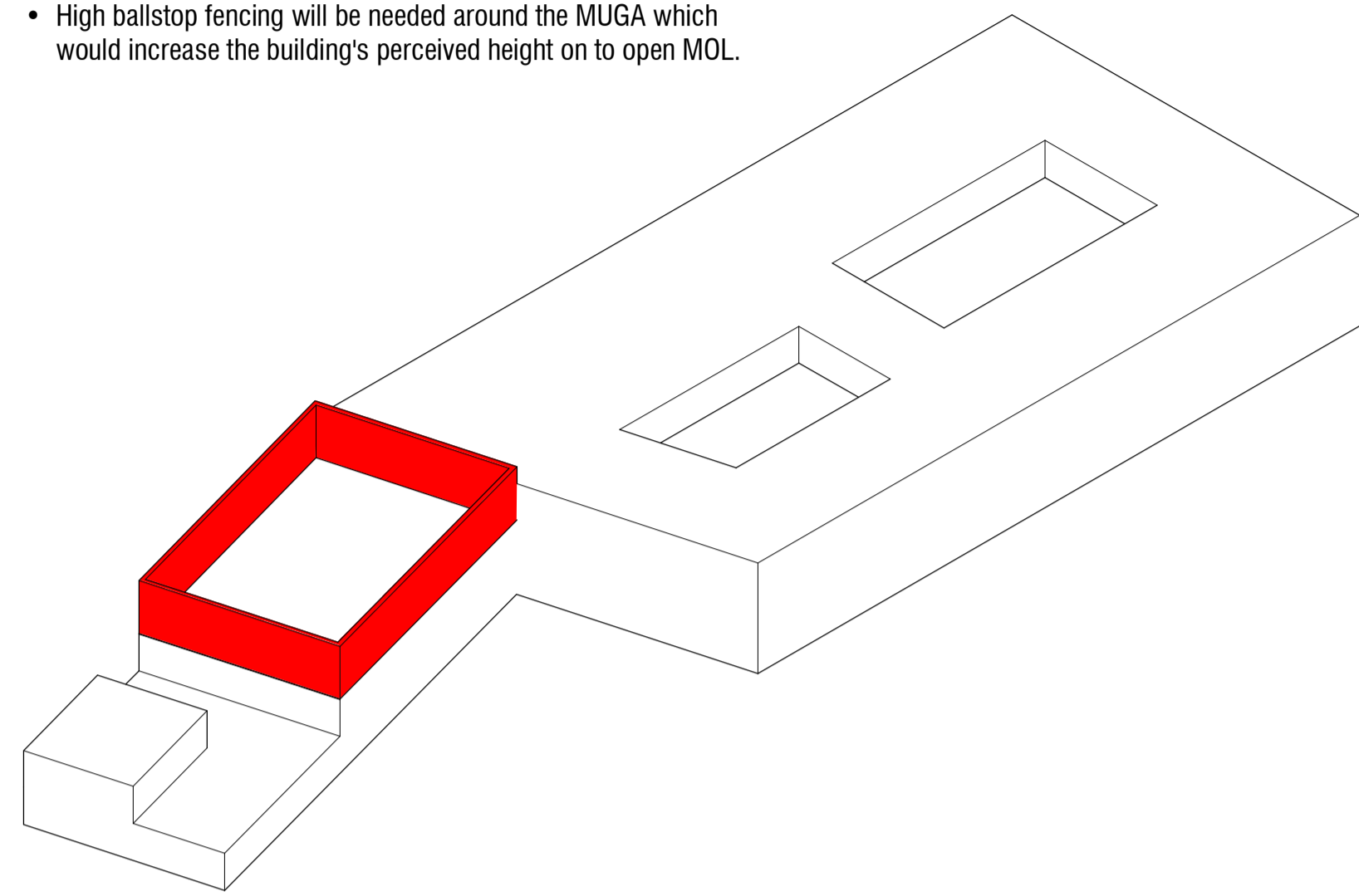


To enable access to a rooftop MUGA over the sports hall, the sports hall would need to be moved to the east to abut the main block. This would lead to:

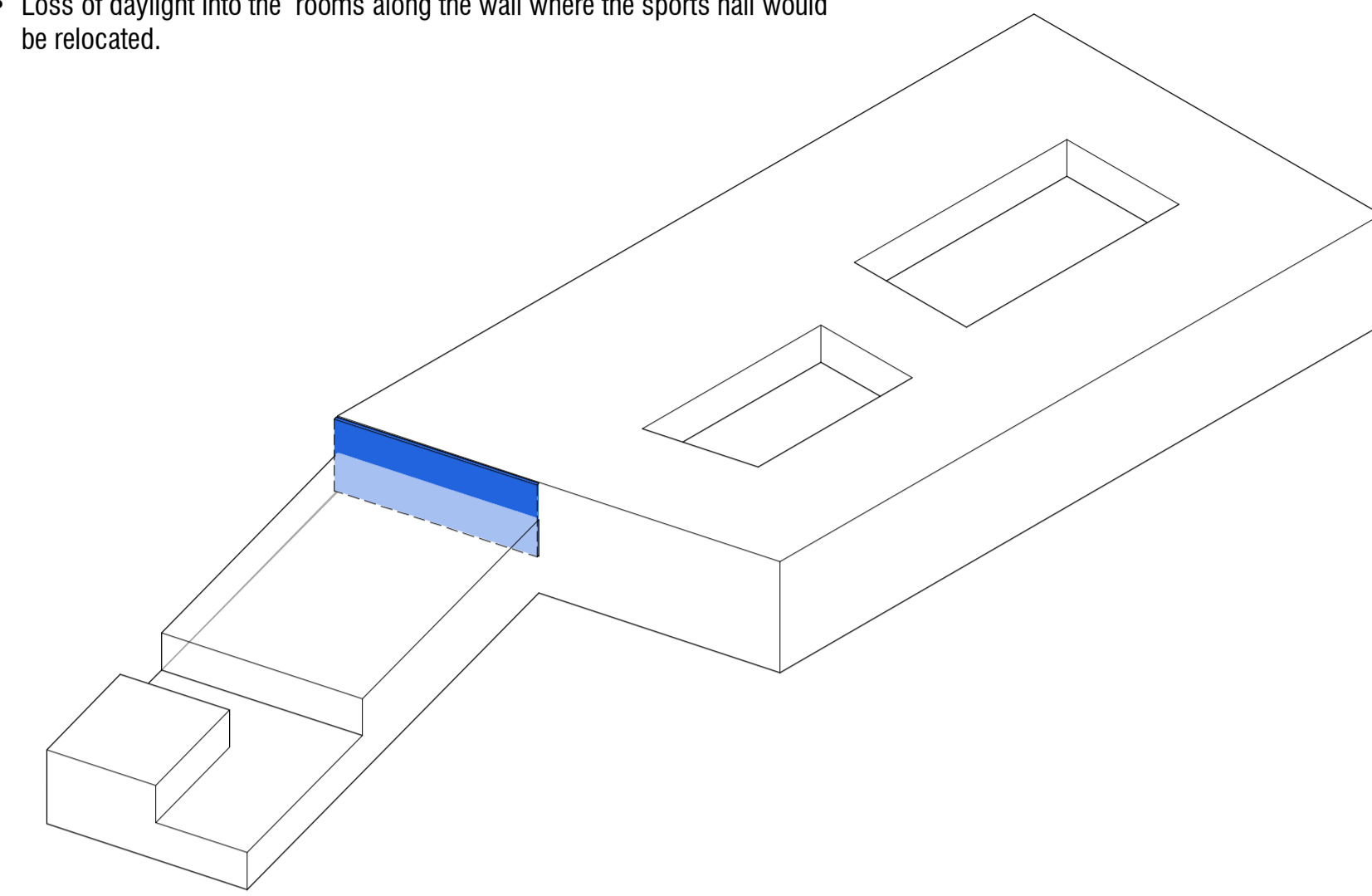
High Fencing

- High ballstop fencing will be needed around the MUGA which would increase the building's perceived height on to open MOL.



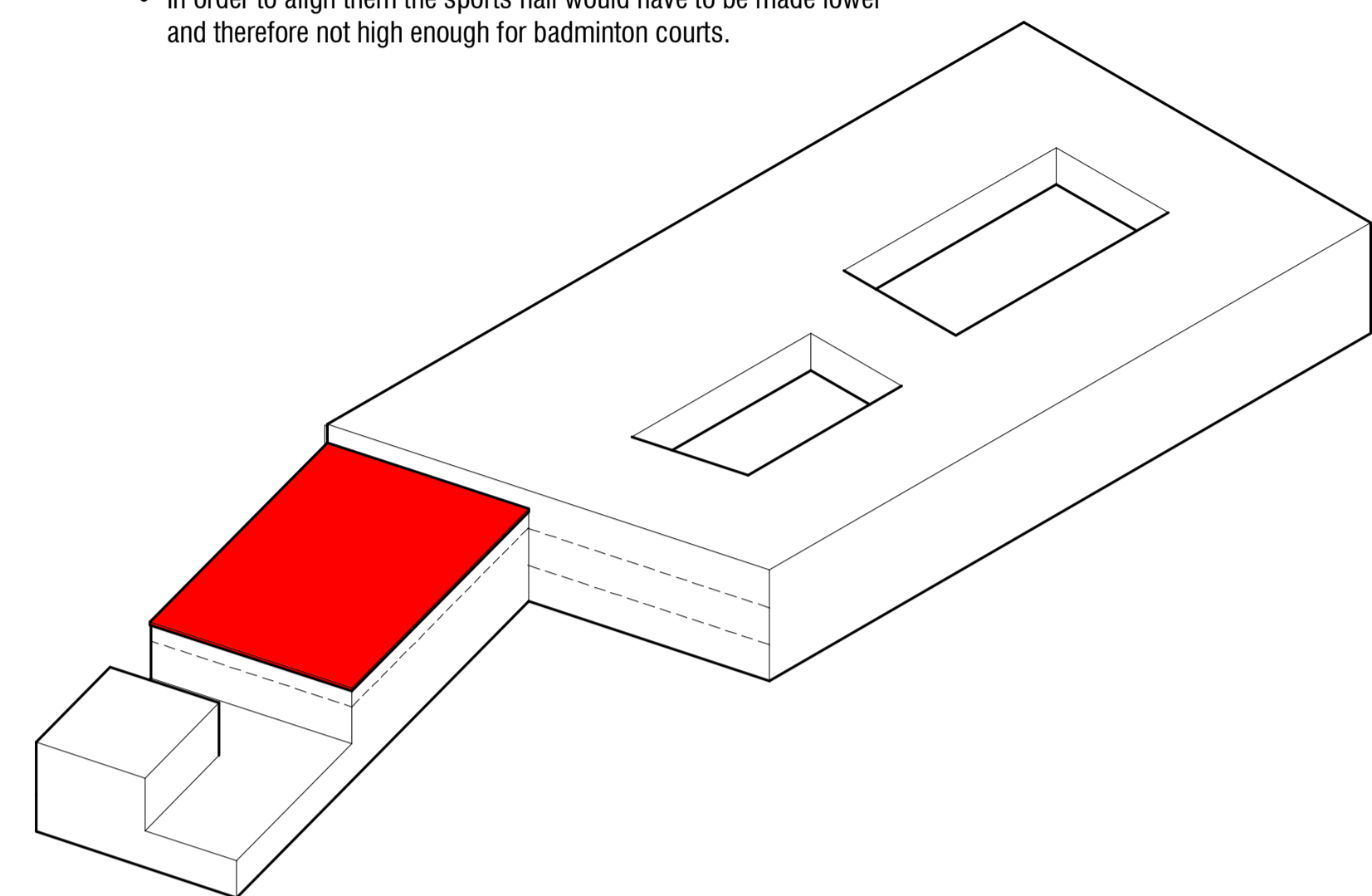
Loss of Daylight

- Loss of daylight into the rooms along the wall where the sports hall would be relocated.



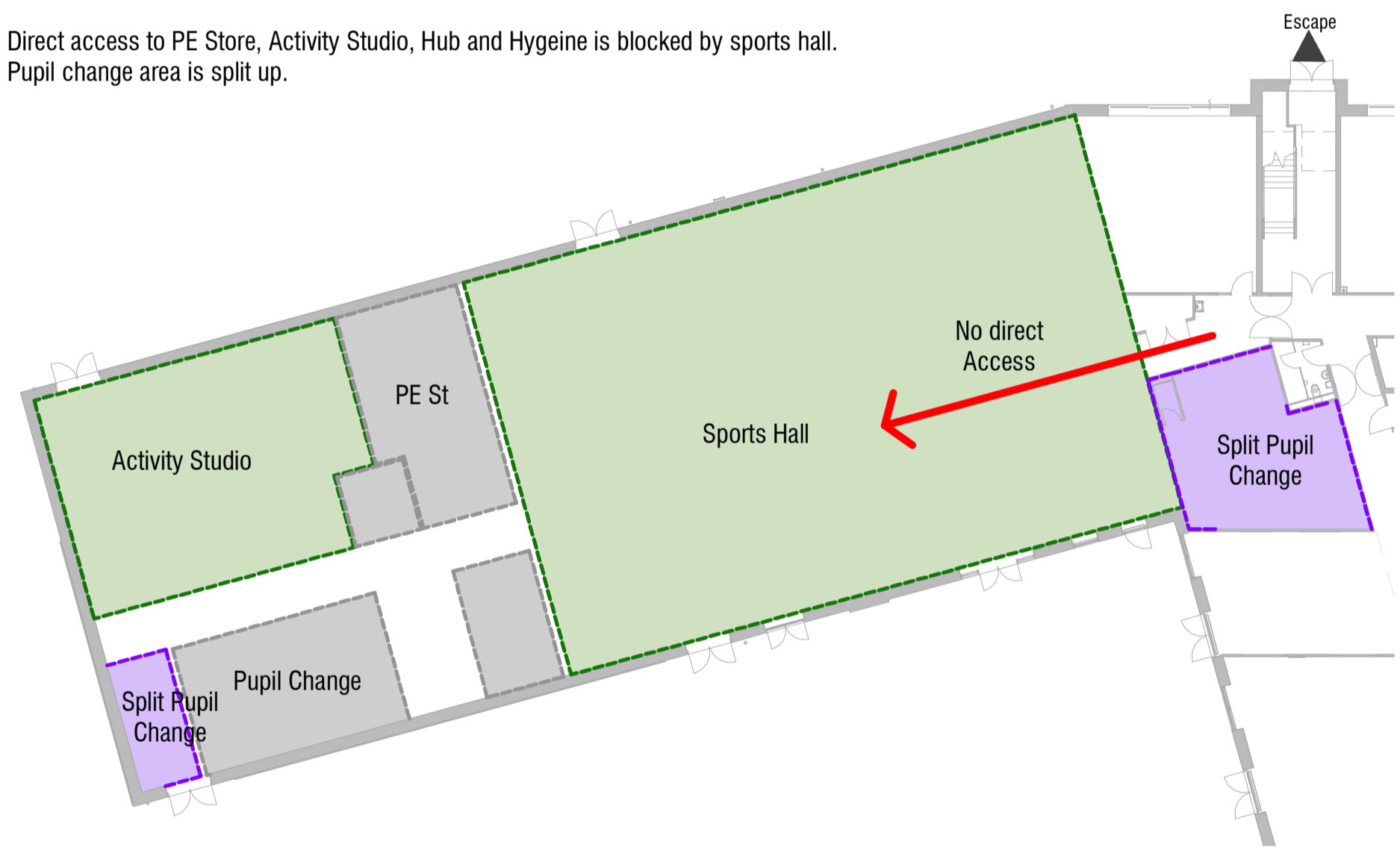
Reduced Clear Height

- The height of the sports hall for MUGA and main building floors aren't aligned.
- In order to align them the sports hall would have to be made lower and therefore not high enough for badminton courts.



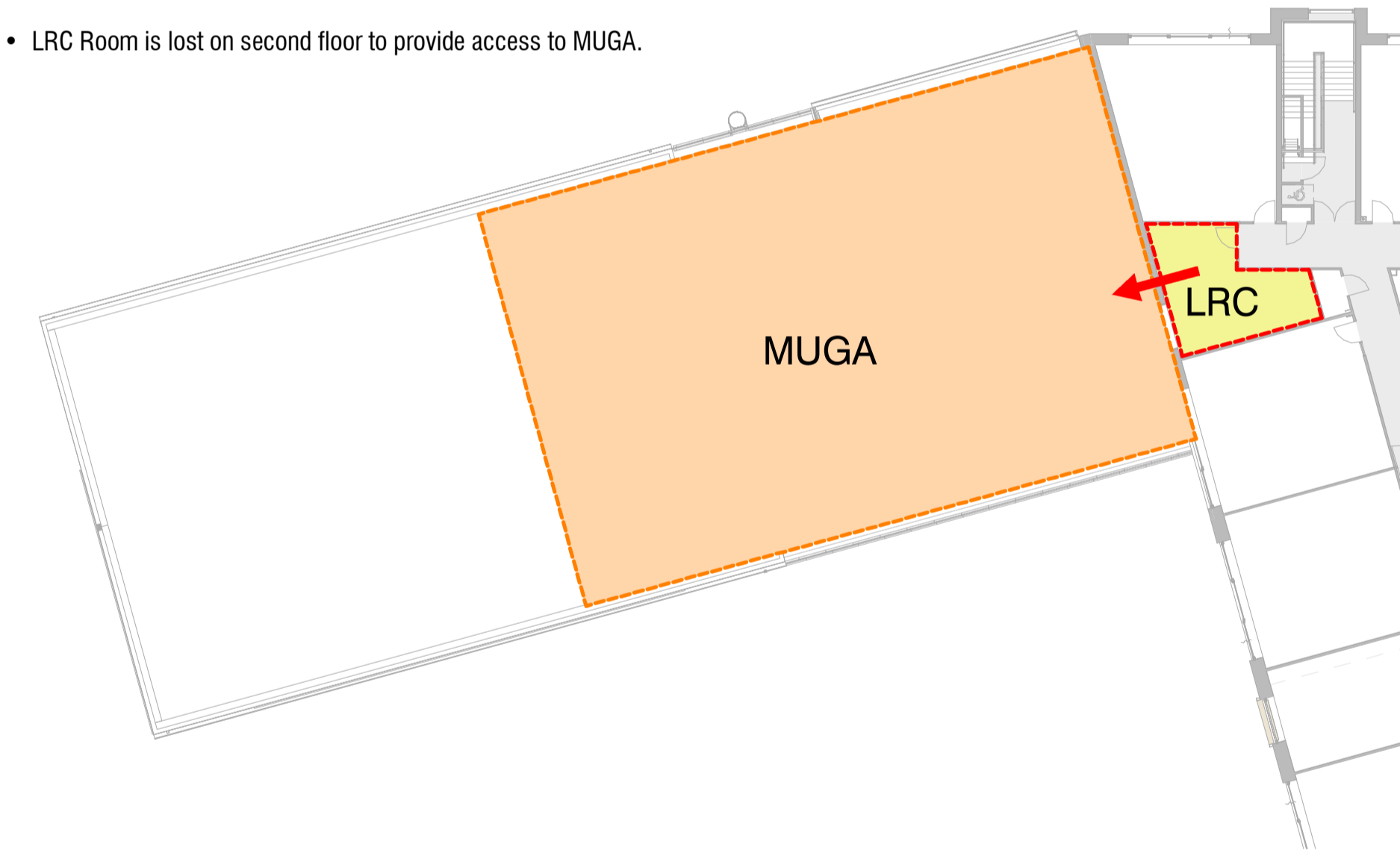
Accessibility

- Direct access to PE Store, Activity Studio, Hub and Hygiene is blocked by sports hall.
- Pupil change area is split up.



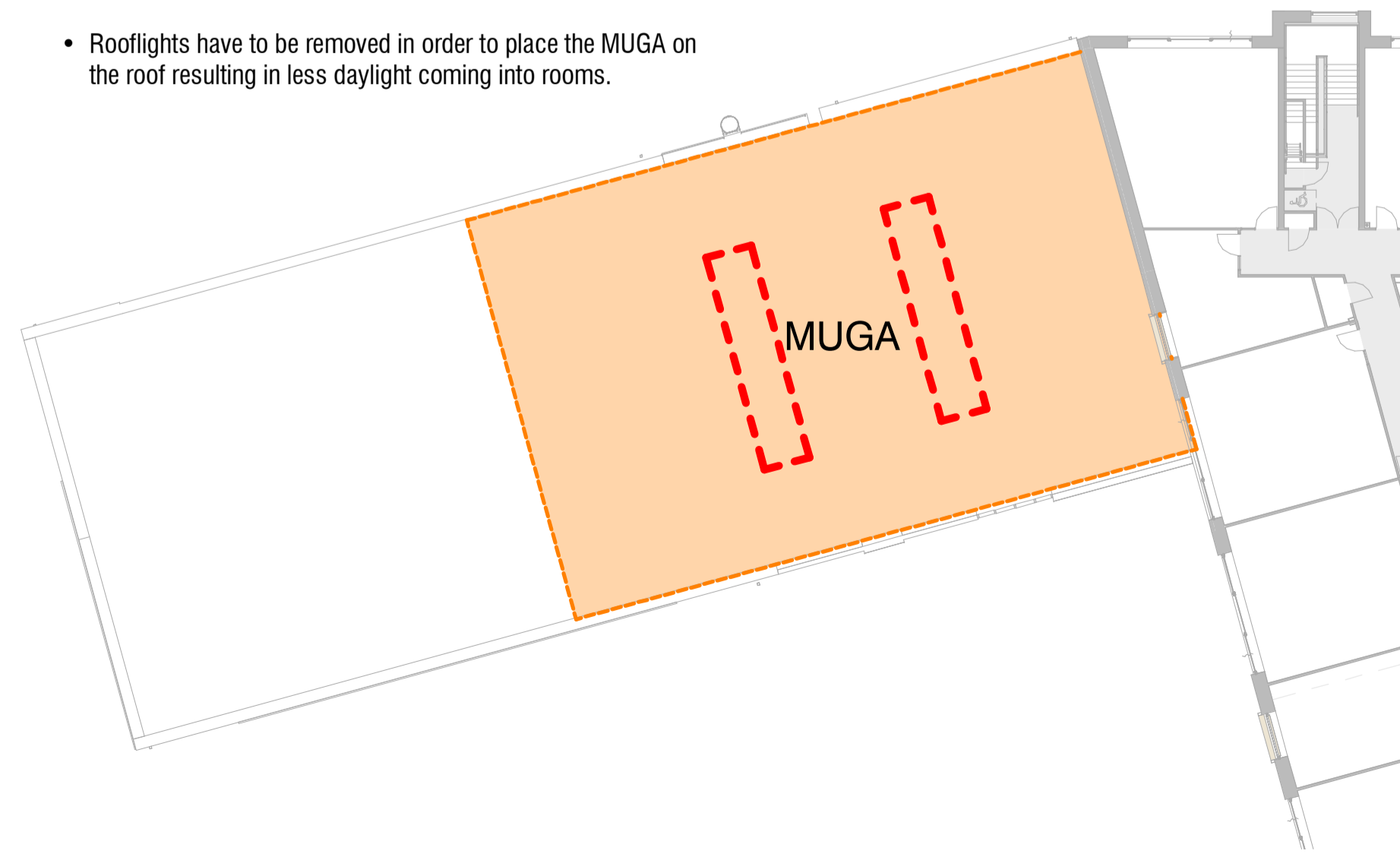
Loss of LRC

- LRC Room is lost on second floor to provide access to MUGA.



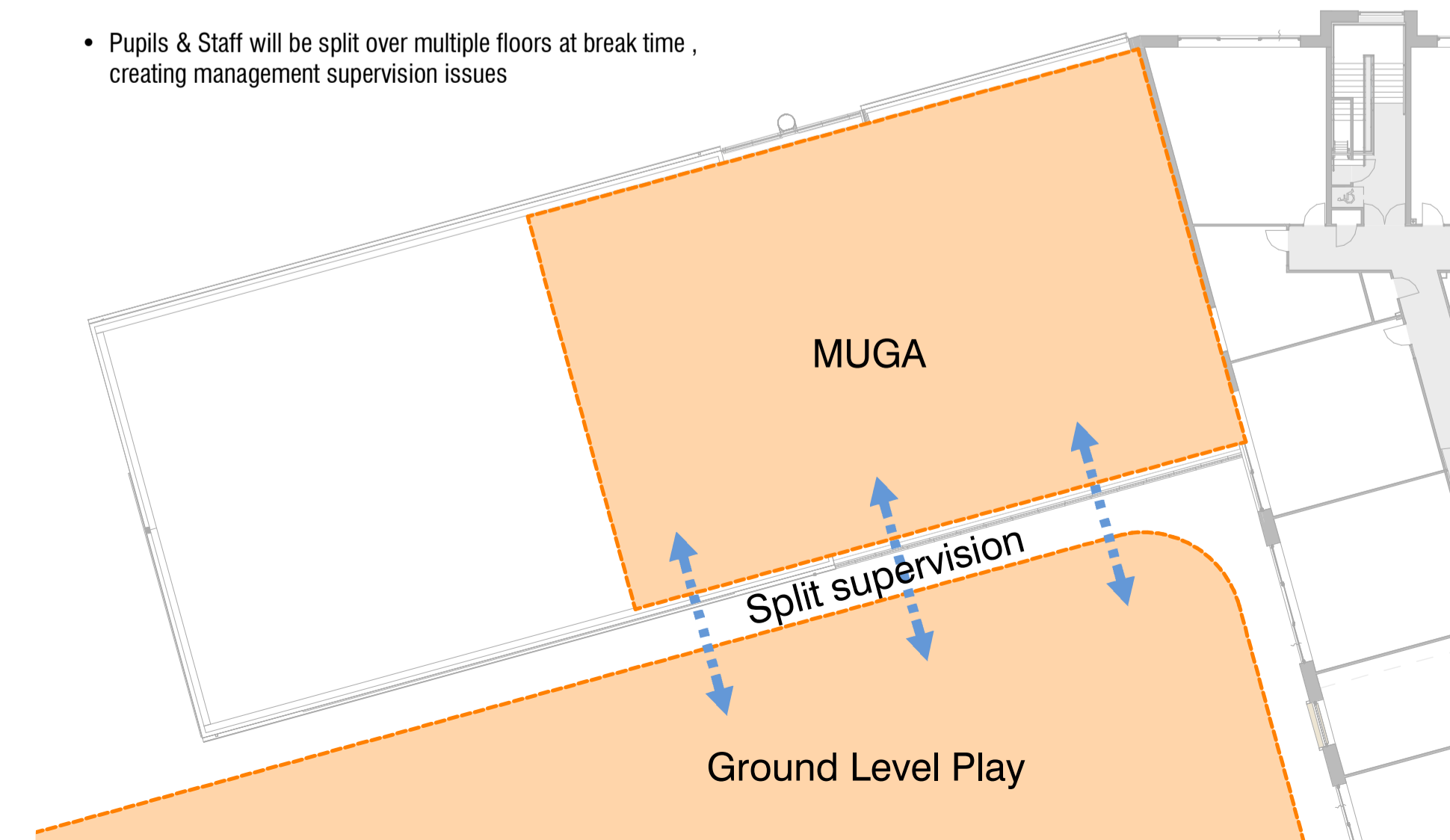
Loss of Rooflights

- Rooflights have to be removed in order to place the MUGA on the roof resulting in less daylight coming into rooms.



Split Supervision

- Pupils & Staff will be split over multiple floors at break time, creating management supervision issues



AH	CB	14.03.19	Rooftop MUGA first issue
AUTHOR	CHECK	DATE	DESCRIPTION
CLIENT			REVISOR
Bowmer & Kirkland			AH
			CHECKED BY
			CB
			ORIGINATOR NO
			151547

CONSULTANT
STRIDE TREGLOWN
www.stride-treglow.com © Stride Treglow Limited 2016
 PROJECT
 Turing House School
 Twickenham

DRAWING TITLE
Rooftop MUGA Analysis

SUITABILITY STATUS	SCALE
S2 : SUITABLE FOR INFORMATION	1 : 250 @ A1
PROJECT ORIGINATOR ZONE LEVEL TYPE ROLE NUMBER	REVISION
FS0316-STL-ZZ-DR-A-S202	P01