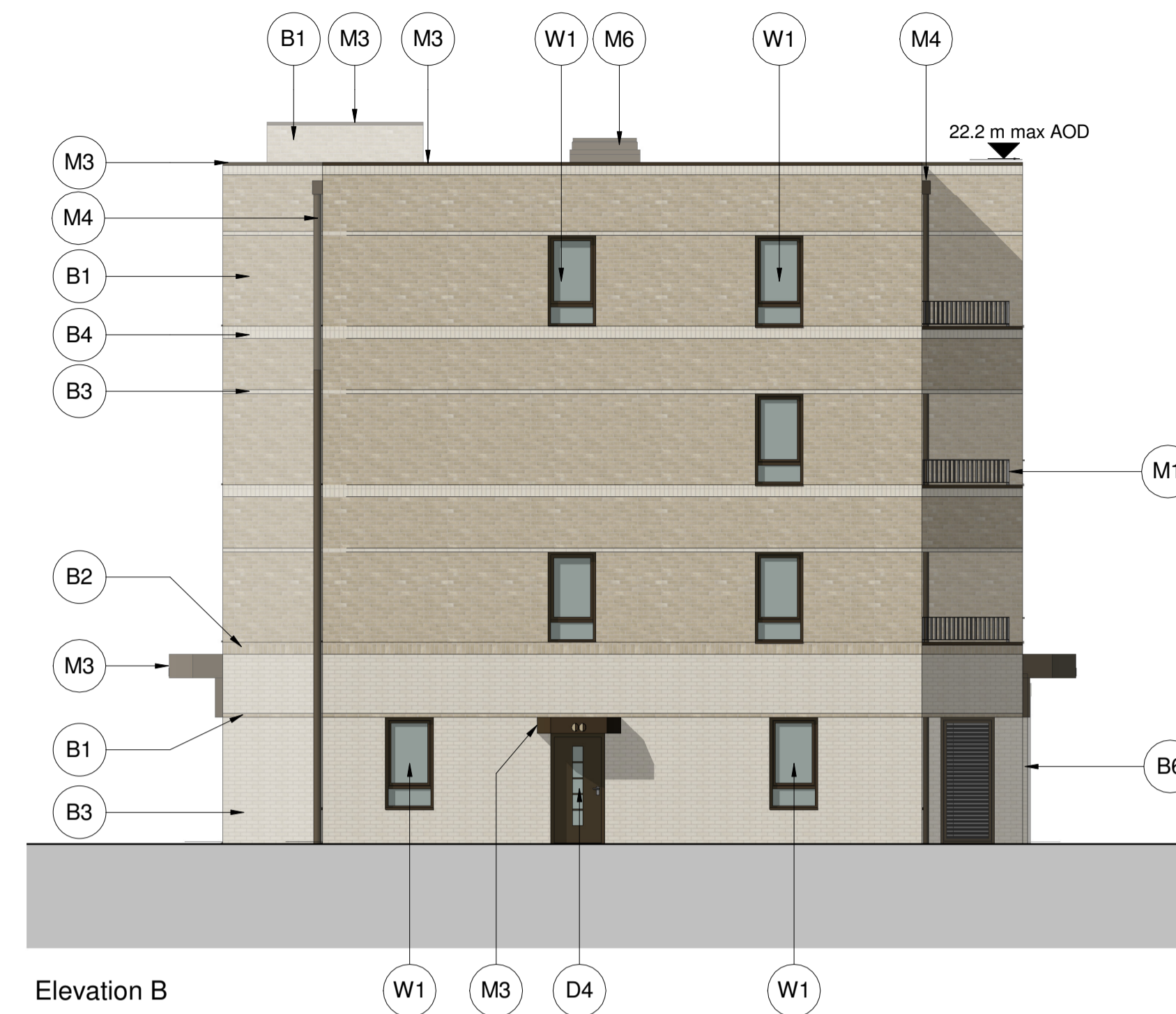




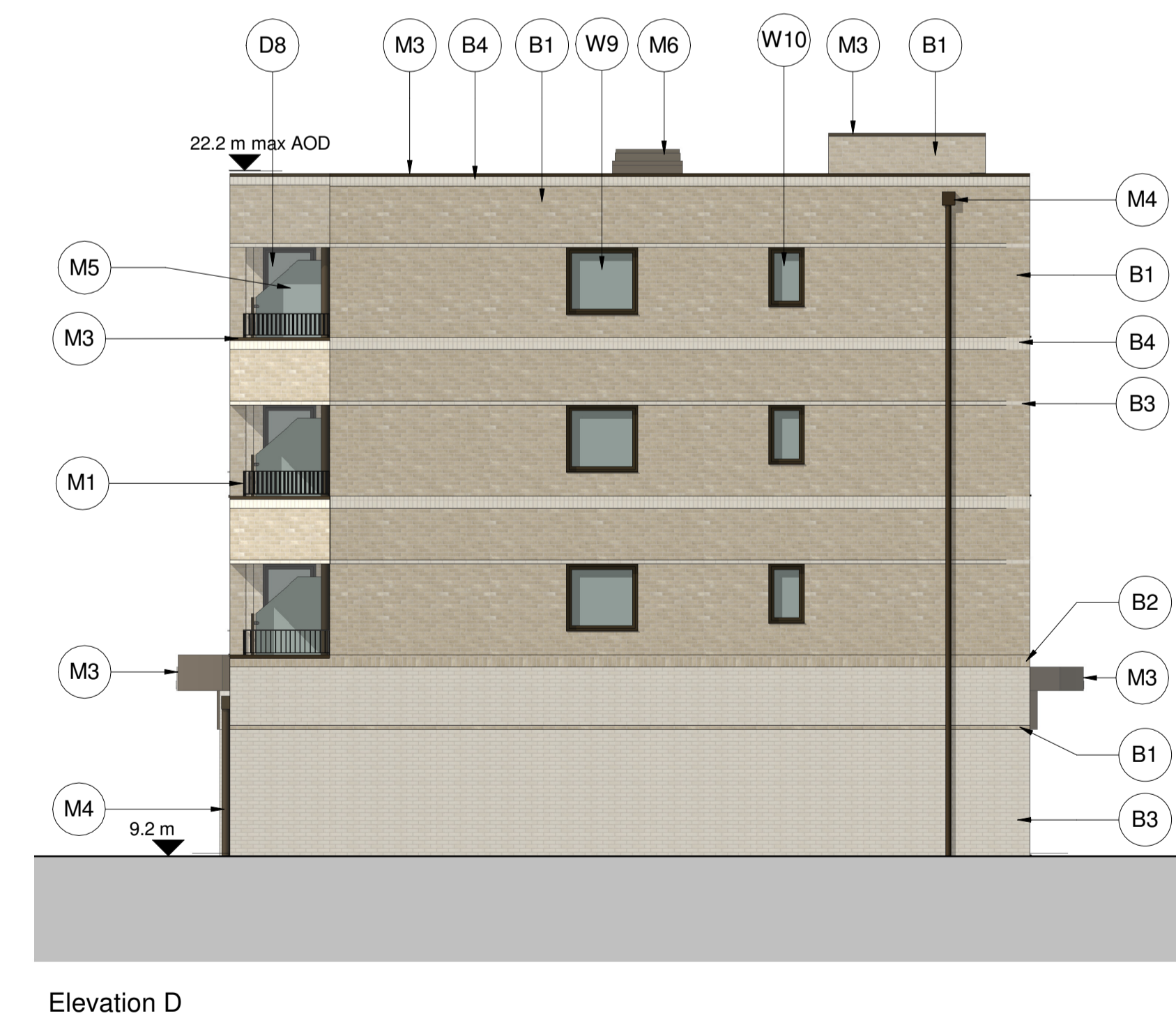
Elevation A



Elevation B

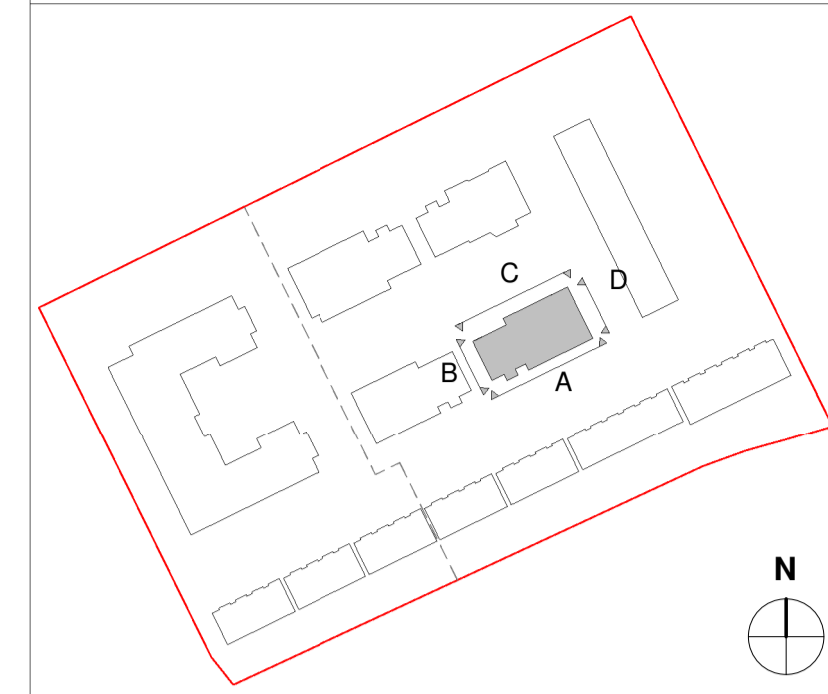


Elevation C



Elevation D

**Key Plan (NTS)**



**Materials Key**

- Brick**
- B1 - Buff - Stretcher bond
- B2 - Buff - Soldier course
- B3 - White - Stretcher bond
- B4 - White - Soldier course
- B5 - White - Corbelled brick - primary 4 steps
- B6 - White - Corbelled brick - secondary 2 steps
- Metal** - All metal work to be Bronze PPC RAL 8008
- M1** - **Balcony Balustrade**  
Contemporary flat bar 475mm
- M2** - **Entrance Canopy**
- M3** - **Brick Coping**
- M4** - **Rainwater Pipes**
- M5** - **Balcony divider**  
1800x1500mm
- M6** - **Roof AOV**
- M7** - **Gas Pipe - Dummy RWP**
- Windows-** All windows to be Bronze PPC RAL 8008
- W1** - **Single windowpane**  
910x1725mm
- W2** - **Single windowpane**  
1360x1275mm
- W3** - **Triple windowpane**  
1810x1725mm
- W4** - **Triple windowpane**  
1585x1725mm
- W5** - **Oriel bay**  
with side opening windows
- W6** - **AOV window**  
1360x1275mm
- W7** - **Triple windowpane**  
bottom pane back painted & boxed out 1810x1725mm
- W8** - **Single windowpane**  
bottom pane back painted & boxed out 910x1725mm
- W9** - **Single obscure windowpane**  
1360x1275mm
- W10** - **Single obscure windowpane**  
685x1125mm
- Doors** - All doors to be Bronze PPC RAL 8008
- D1** - **Private Amenity**  
Glazed door with side operable window and fixed glazed panel
- D2** - **Flat Block Entrance**  
Glazed door with side fixed glazed panel W:1310mm
- D3** - **Flat Block Entrance**  
Glazed door with side fixed glazed panel W:1810mm
- D4** - **Flat Entrance**  
Composite door with 5x central vision panels H:2100mm
- D5** - **Ancillary Entrance**  
Single door with louvers
- D6** - **Ancillary Entrance**  
Double door with louvers
- D7** - **Balcony**  
Glazed door

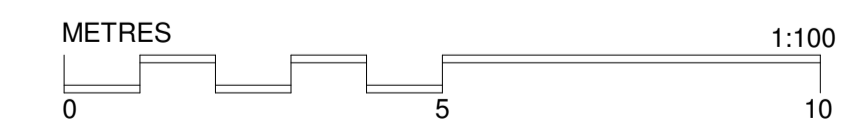
**Notes**

NB: The materials key is specific to this drawing only. All signage is indicative

Bronze PPC - RAL 8008 Or similar  
Buff Brick - Ivanhoe Cream Blend (0816) Or similar  
White Brick - White Engobe (5145) Or similar

All mortar to be white.

Further information to be found in accompanying Design and Access Statement.



**PLANNING ISSUE**

Date:	Oct 2018	Client:	Clarion Housing Group
Drawn:	AC	Project:	Richmond College
Check:	DG	Title:	Block 1 - Proposed Elevations
Scale:	1 : 100	@A1	Dwgno: 18-103 D (B1) 200
			Revision:P2

Notes:

--

Revisions:

Rev	Date	Drawn	Chkd

Revisions:

Rev	Date	Drawn	Chkd

Revisions:

Rev	Date	Drawn	Chkd
P1	20/11/2018	WO	DG
P2	10/05/2019	DG	DG

