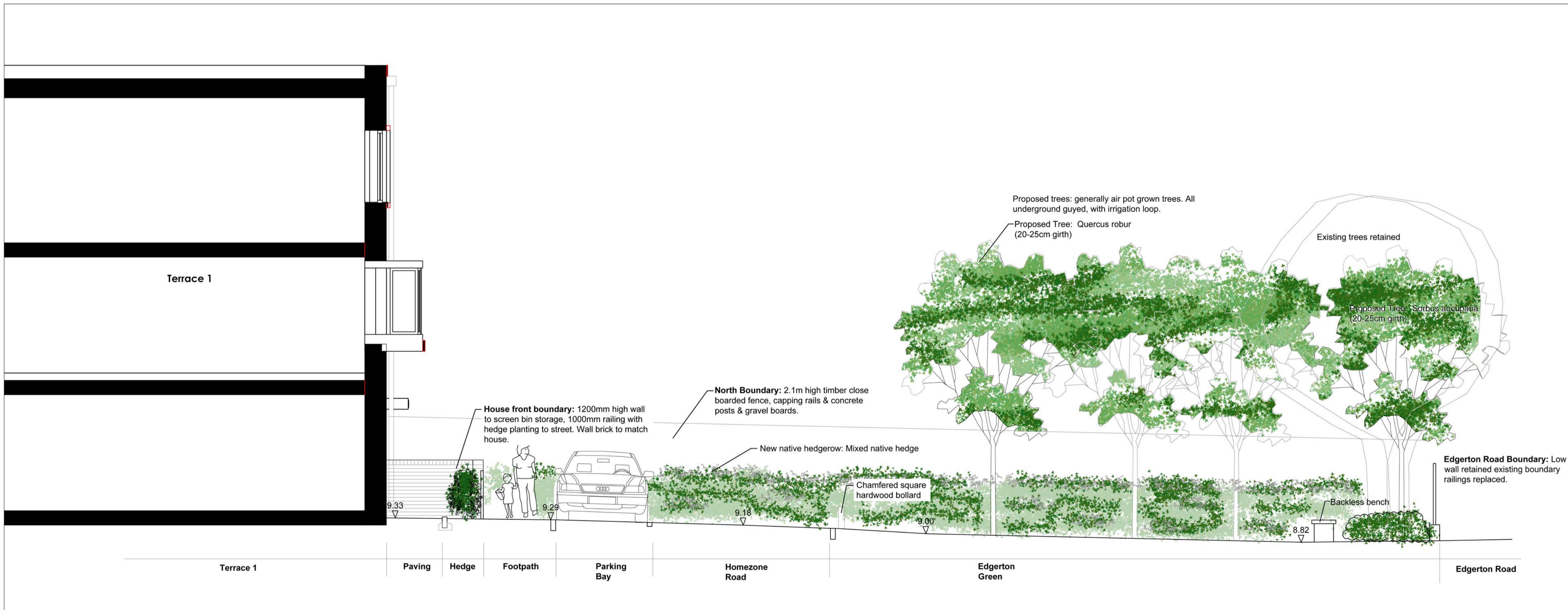
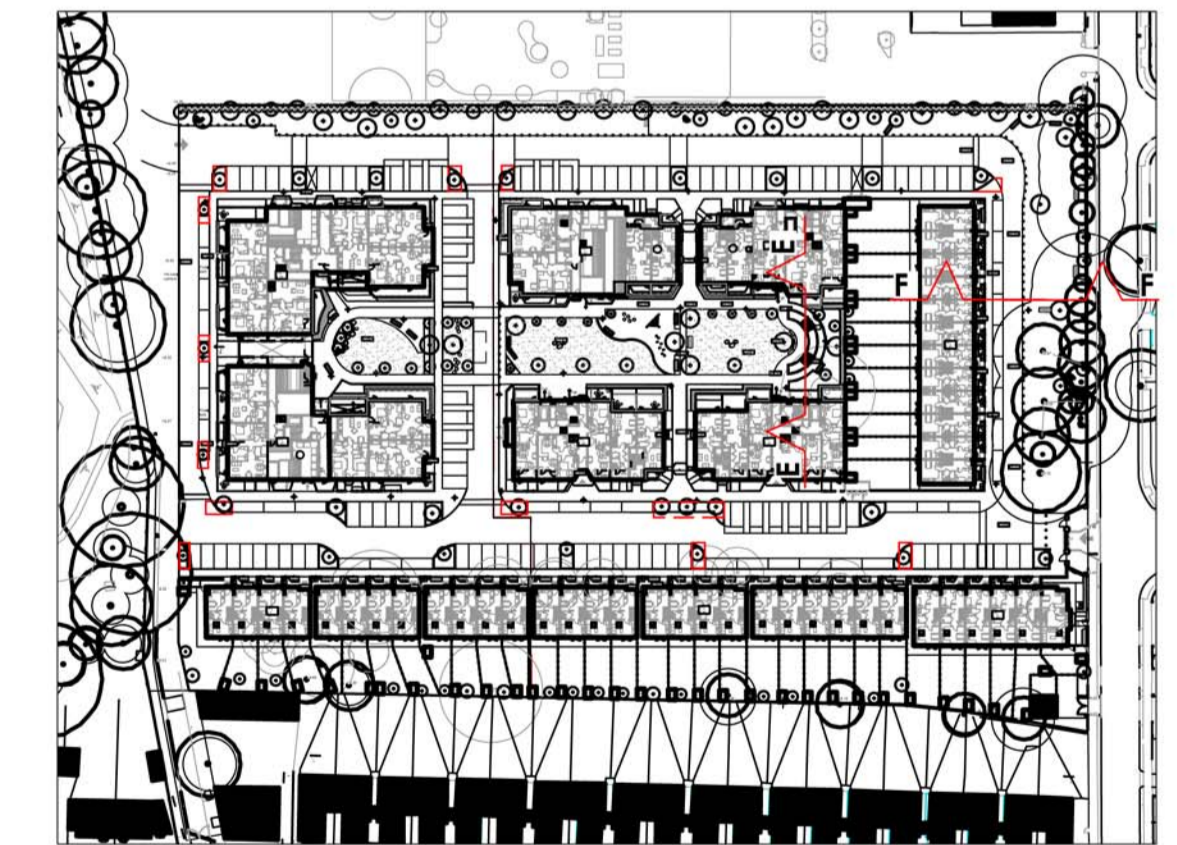


SECTION E-E - East Garden



SECTION F-F - Edgerton Green



Rev. A 30.11.18 (AP) - Issued for planning  
 Rev. B 08.05.19 (LP) - Re-issued for planning  
 London: 6 David Mews  
 Greenwich South Street  
 London SE10 8NJ  
 T/F 020 8293 0799  
 Harrogate: 59 West End Avenue  
 Harrogate, Yorkshire HG2 9BX  
 T/F 020 8293 0799  
 www.ireland-albrecht.co.uk  
 post@ireland-albrecht.co.uk



**Richmond College Redevelopment**

**Landscape Sections - Edgerton Green**

**For Planning**

Scale	Drawn	Checked	Date
1:50 @ A1	LP	DA	23.11.18

Drawing No.	Revision
IA-421-LS-P03	B

All dimensions to be checked on site. Do not Scale. This drawing is copyright.