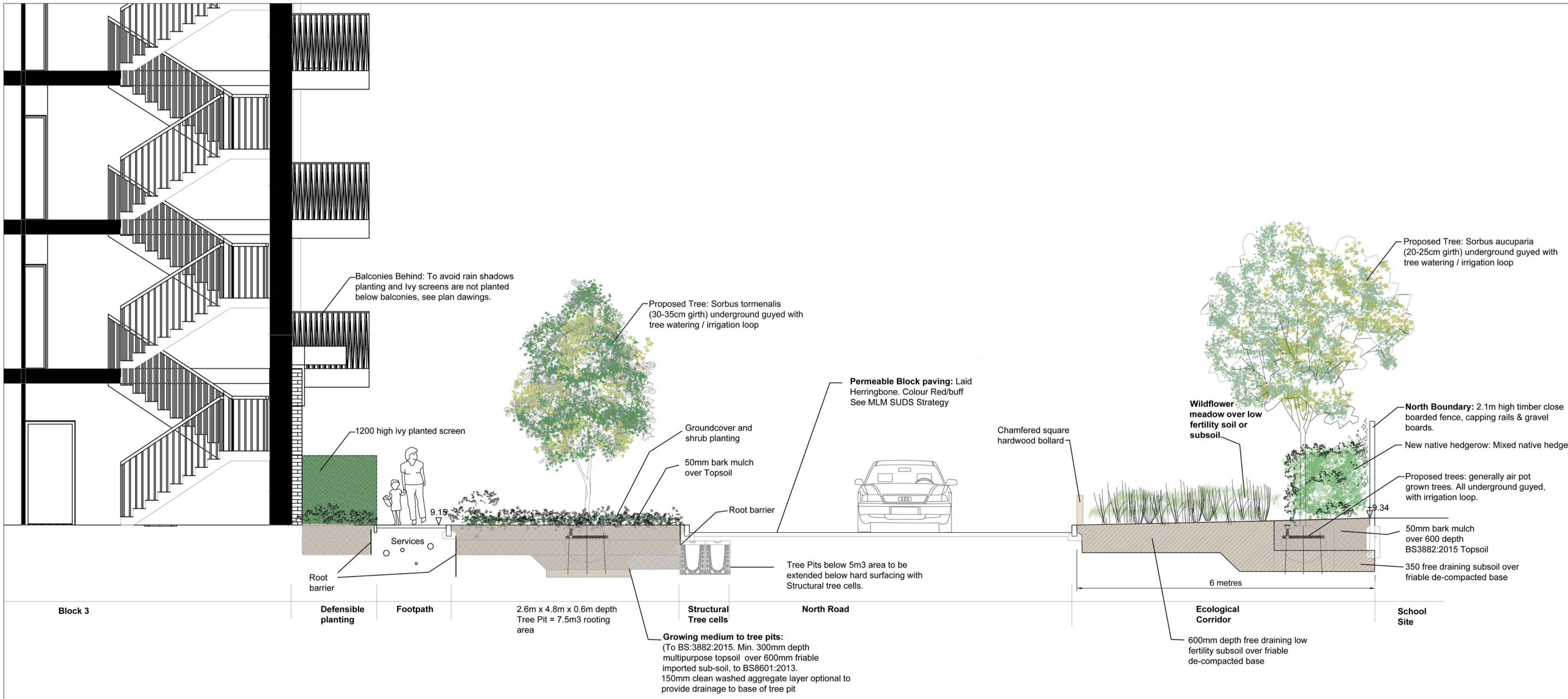
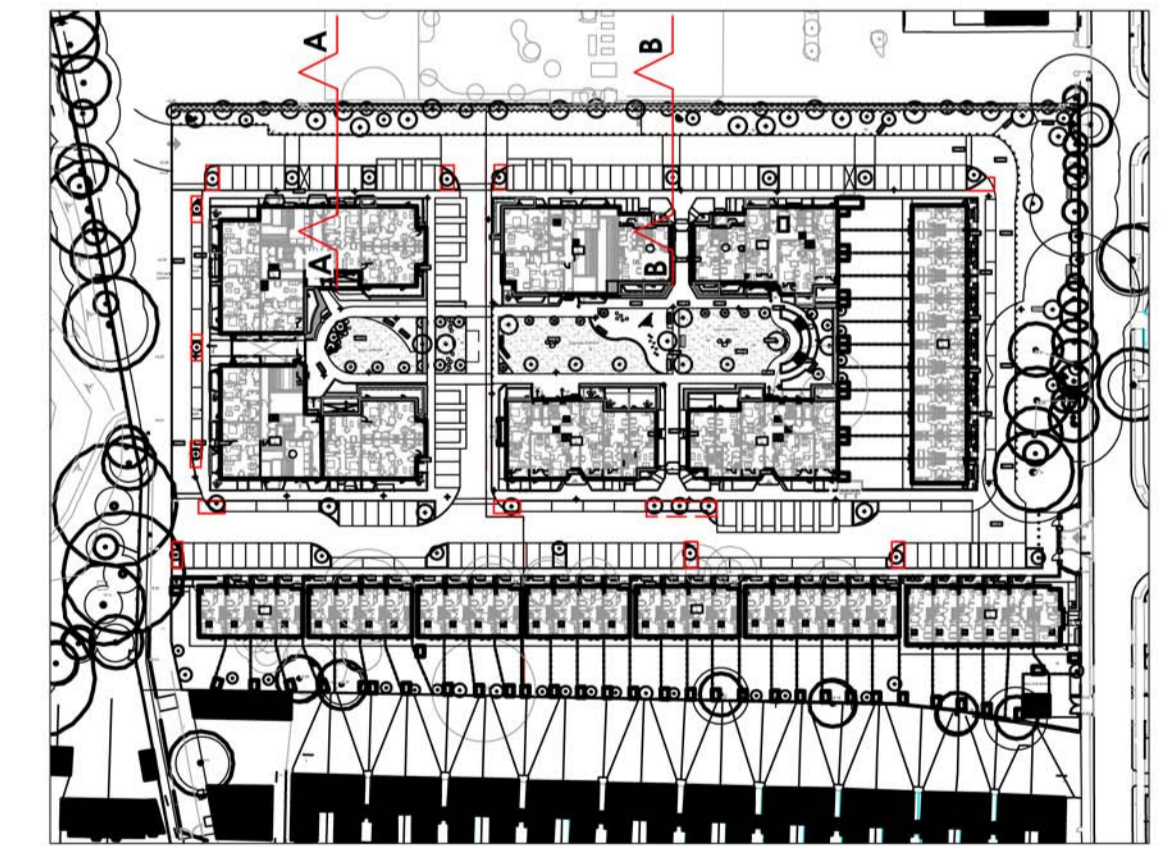


SECTION A-A



SECTION B-B



Rev. A 30.11.18 (AP) - Issued for planning
 Rev. B 08.05.19 (LP) - Re-issued for planning

London: 6 David Mews
 Greenwich South Street
 London SE10 8NJ
 T/F 020 8293 0799

Hanrogate: 59 West End Avenue
 Hanrogate: Yorkshire HG2 9JX
 T/F 020 8293 0799

www.ireland-albrecht.co.uk
 post@ireland-albrecht.co.uk



Richmond College Redevelopment

Landscape Sections - Ecological Corridor

For Planning

Scale	Drawn	Checked	Date
1:50 @ A1	LP	DA	23.11.18

Drawing No: IA-421-LS-P01

All dimensions to be checked on site. Do not Scale. This drawing is copyright.