
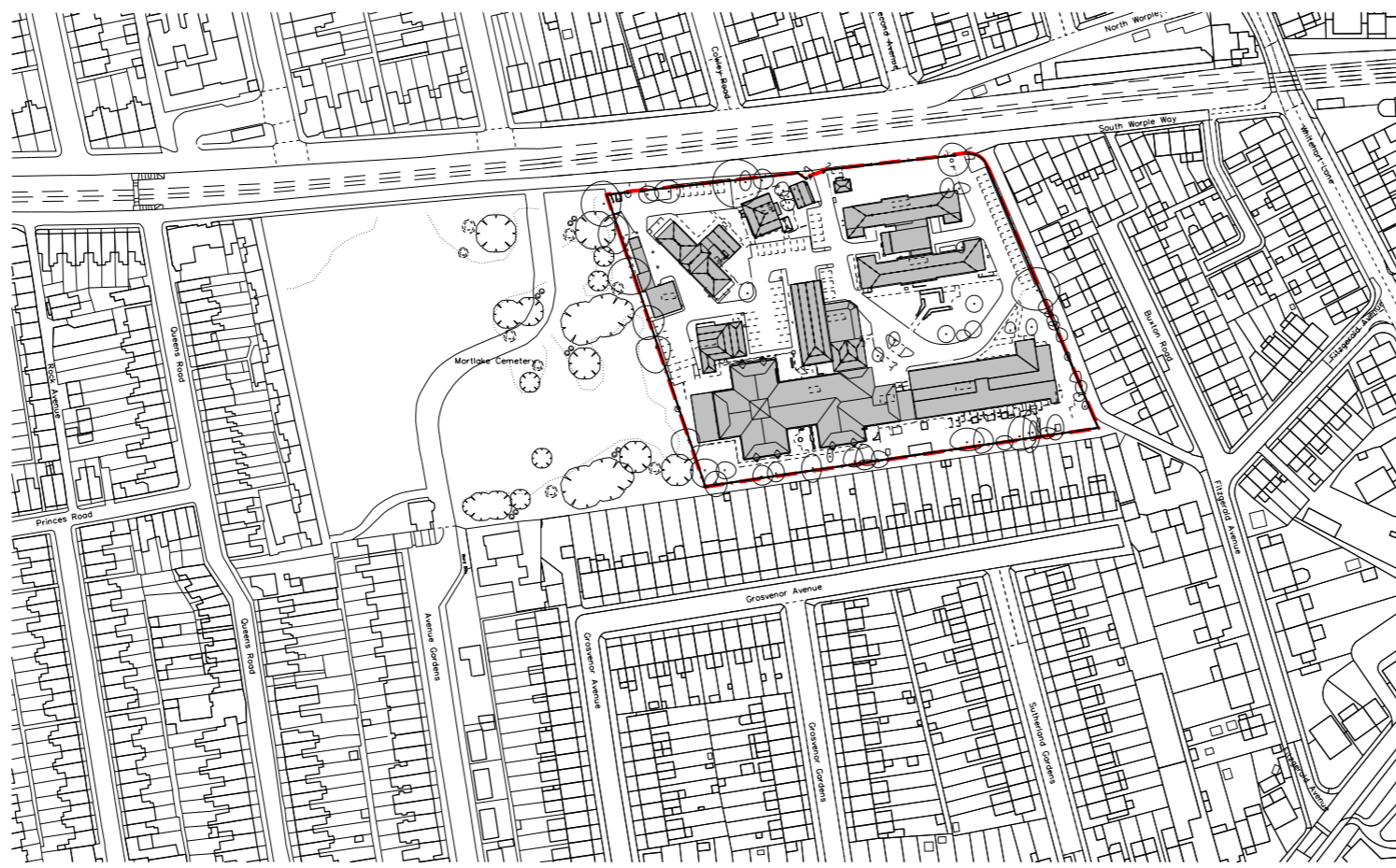


NOTES:  
 DO NOT SCALE FROM THIS DRAWING.  
 ALL DIMENSIONS TO BE CHECKED ON SITE.  
 ALL OMISSIONS AND DISCREPANCIES TO BE REPORTED TO THE ARCHITECT IMMEDIATELY.

ALL RIGHTS RESERVED. THIS WORK IS COPYRIGHT AND CANNOT BE REPRODUCED OR COPIED OR MODIFIED IN ANY FORM OR BY ANY MEANS, GRAPHIC ELECTRONIC OR MECHANICAL, INCLUDING PHOTOCOPYING WITHOUT THE WRITTEN PERMISSION OF SQUIRE AND PARTNERS ARCHITECTS.

 Site Boundary

Site Area: 14350 m2



Revision description	Date	Check	Rev
Revision of Fleming Lodge	18/12/18	GH	A

**SQUIRE & PARTNERS**

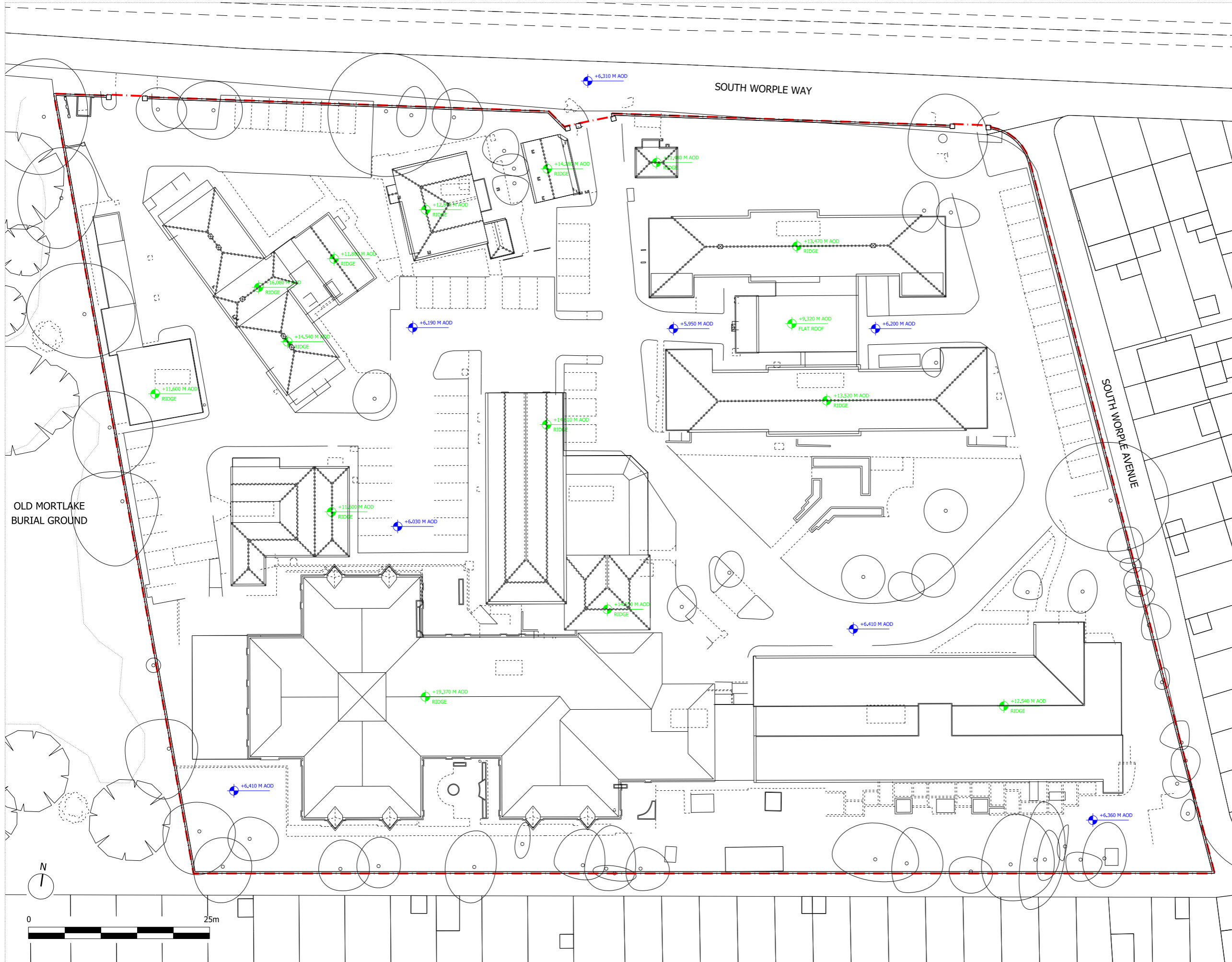
The Department Store  
 248 Ferndale Road, London SW9 8FR  
 T: 020 7278 5555

info@squireandpartners.com  
 www.squireandpartners.com

Project  
**Barnes Hospital**  
 South Worple Way  
 Barnes, SW14 8SU

Drawing  
**Site Location Plan**

Drawn	Date	Scale
SSI	18/12/2018	1: 1250@A1 1: 2500@A3
Job number	Drawing number	Revision
18002	C645_P_00_001	A



NOTES:  
 DO NOT SCALE FROM THIS DRAWING.  
 ALL DIMENSIONS TO BE CHECKED ON SITE.  
 ALL OMISSIONS AND DISCREPANCIES TO BE REPORTED TO THE ARCHITECT IMMEDIATELY.

ALL RIGHTS RESERVED. THIS WORK IS COPYRIGHT AND CANNOT BE REPRODUCED OR COPIED OR MODIFIED IN ANY FORM OR BY ANY MEANS, GRAPHIC ELECTRONIC OR MECHANICAL, INCLUDING PHOTOCOPIING WITHOUT THE WRITTEN PERMISSION OF SQUIRE AND PARTNERS ARCHITECTS.

- - - - Site Boundary
- ◆ Ground Level
- ◆ Building Level

OLD MORTLAKE BURIAL GROUND

SOUTH WORPLE WAY

SOUTH WORPLE AVENUE

Revision of Fleming Lodge	18/12/18	GH	A
Revision description	Date	Check	Rev

**SQUIRE & PARTNERS**

The Department Store  
 248 Ferndale Road, London SW9 8FR  
 T: 020 7278 5555  
 info@squireandpartners.com  
 www.squireandpartners.com

Project  
**Barnes Hospital**  
 South Worple Way  
 Barnes, SW14 8SU

Drawing  
**Existing Site Levels**

Drawn	Date	Scale
SSI	18/12/2018	1: 250@A1 1: 500@A3
Job number	Drawing number	Revision
18002	C645_P_00_002	A



NOTES:  
 DO NOT SCALE FROM THIS DRAWING.  
 ALL DIMENSIONS TO BE CHECKED ON SITE.  
 ALL OMISSIONS AND DISCREPANCIES TO BE REPORTED TO THE ARCHITECT IMMEDIATELY.

ALL RIGHTS RESERVED. THIS WORK IS COPYRIGHT AND CANNOT BE REPRODUCED OR COPIED OR MODIFIED IN ANY FORM OR BY ANY MEANS, GRAPHIC ELECTRONIC OR MECHANICAL, INCLUDING PHOTOCOPYING WITHOUT THE WRITTEN PERMISSION OF SQUIRE AND PARTNERS ARCHITECTS.

- - - - - Site Boundary
- 1 Storey
- 1.5 Storey
- 2 Storey
- 2+ / 3 Storey  
[Overscaled 2 Storey]

Revision description	Date	Check	Rev
Revision of Fleming Lodge	18/12/18	GH	A

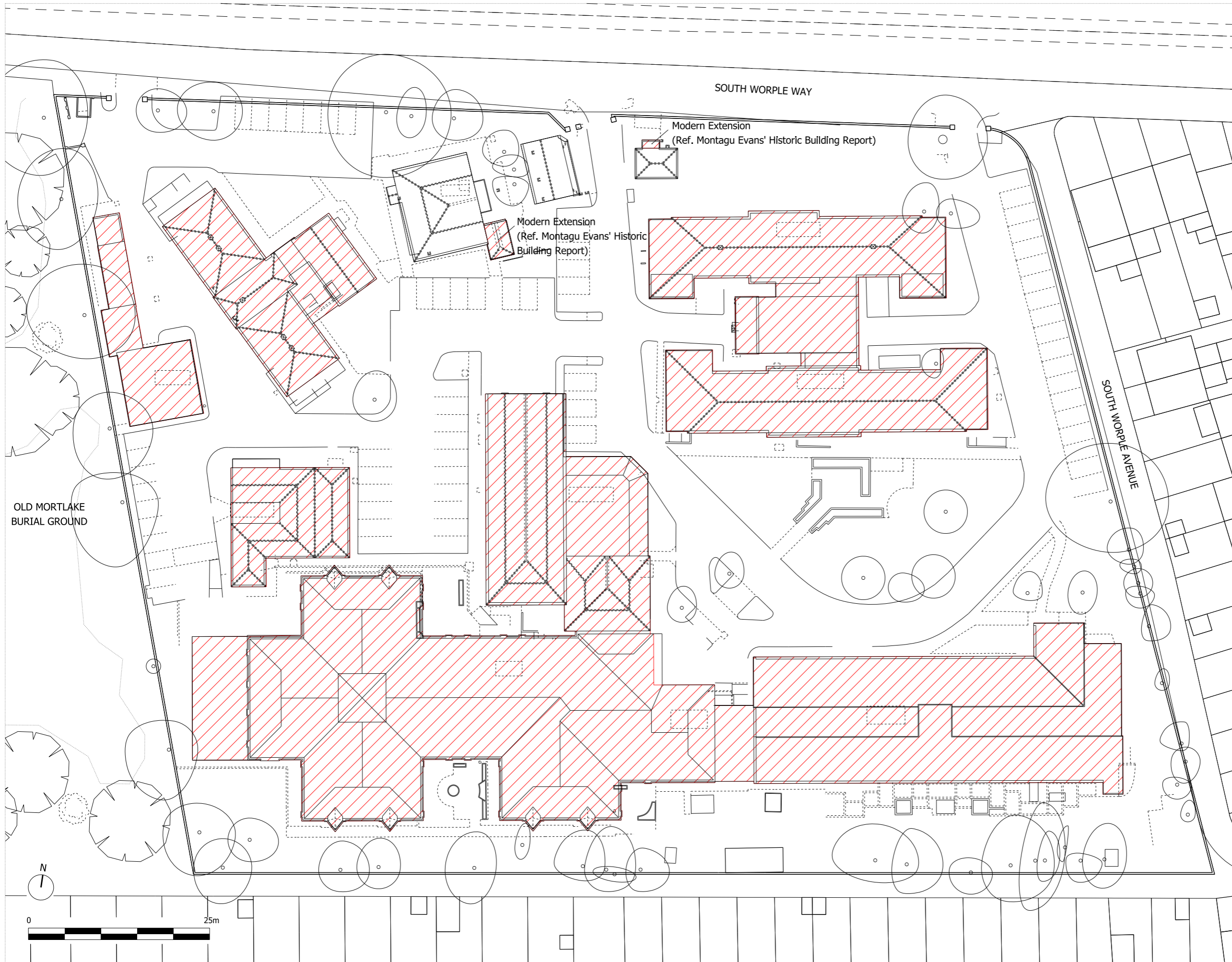
**SQUIRE & PARTNERS**

The Department Store  
 248 Ferndale Road, London SW9 8FR  
 T: 020 7278 5555  
 info@squireandpartners.com  
 www.squireandpartners.com

Project  
**Barnes Hospital**  
 South Worple Way  
 Barnes, SW14 8SU

Drawing  
**Existing Building Heights**

Drawn	Date	Scale
SSI	18/12/2018	1: 2500A1 1: 5000A3
Job number	Drawing number	Revision
18002	C645_P_00_003	A



NOTES:  
 DO NOT SCALE FROM THIS DRAWING.  
 ALL DIMENSIONS TO BE CHECKED ON SITE.  
 ALL OMISSIONS AND DISCREPANCIES TO BE REPORTED TO THE ARCHITECT IMMEDIATELY.

ALL RIGHTS RESERVED. THIS WORK IS COPYRIGHT AND CANNOT BE REPRODUCED OR COPIED OR MODIFIED IN ANY FORM OR BY ANY MEANS, GRAPHIC ELECTRONIC OR MECHANICAL, INCLUDING PHOTOCOPIING WITHOUT THE WRITTEN PERMISSION OF SQUIRE AND PARTNERS ARCHITECTS.

The existing walls and gates are to be retained and repaired where necessary.

At vehicular entrances, the gates will be widened as necessary for fluid vehicular movement.

- Site Boundary
- Buildings to be Demolished

Revision description	Date	Check	Rev
Notes Added	18/02/19	RB	B
Revision of Fleming Lodge	18/12/18	GH	A

## SQUIRE & PARTNERS

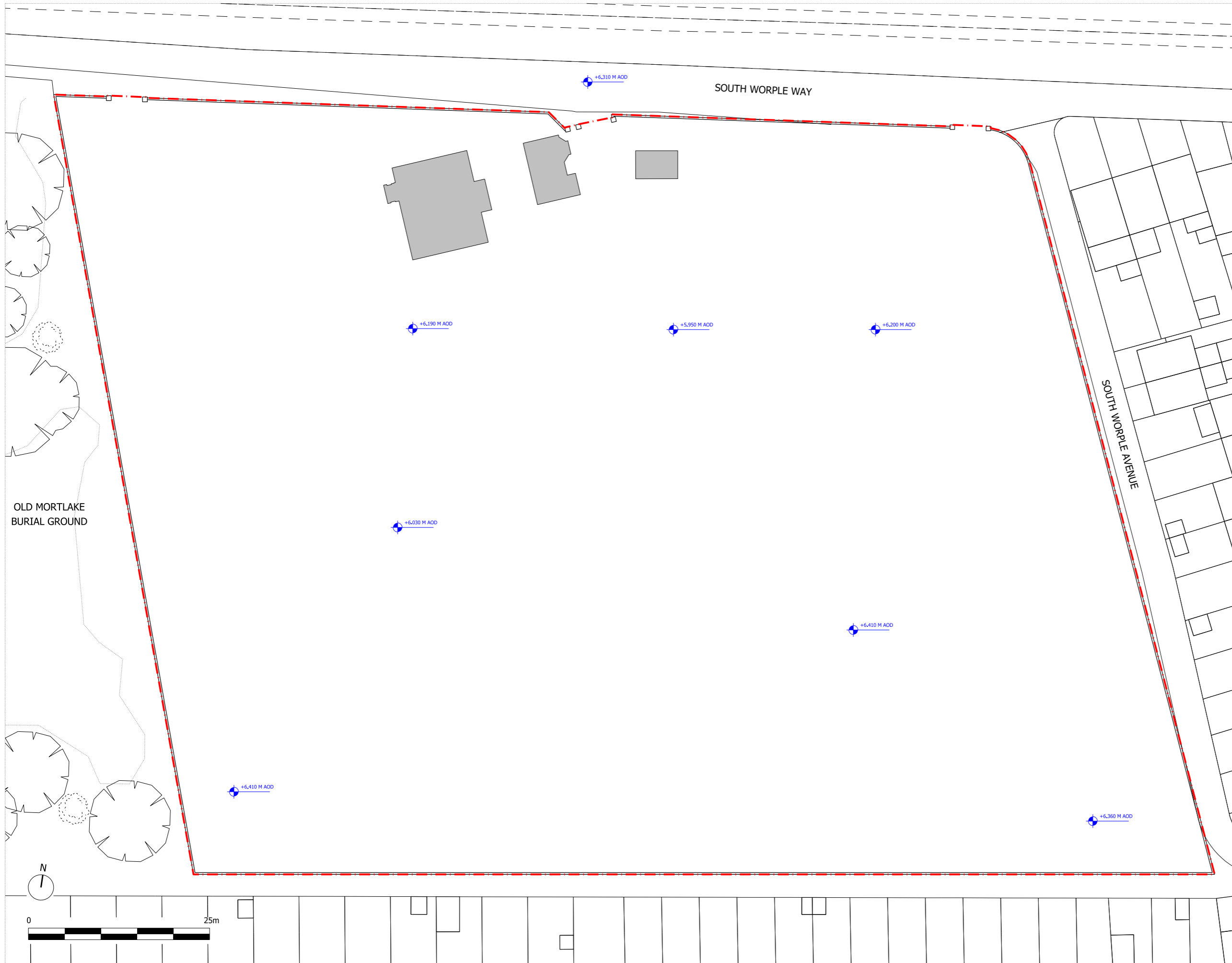
The Department Store  
 248 Ferndale Road, London SW9 8FR  
 T: 020 7278 5555

info@squireandpartners.com  
 www.squireandpartners.com

Project  
**Barnes Hospital**  
 South Worple Way  
 Barnes, SW14 8SU

Drawing  
**Demolition Plan**

Drawn	Date	Scale
SSI	18/02/2019	1: 250@A1 1: 500@A3
Job number	Drawing number	Revision
18002	C645_P_00_004	B



NOTES:  
 DO NOT SCALE FROM THIS DRAWING.  
 ALL DIMENSIONS TO BE CHECKED ON SITE.  
 ALL OMISSIONS AND DISCREPANCIES TO BE REPORTED TO THE ARCHITECT IMMEDIATELY.

ALL RIGHTS RESERVED. THIS WORK IS COPYRIGHT AND CANNOT BE REPRODUCED OR COPIED OR MODIFIED IN ANY FORM OR BY ANY MEANS, GRAPHIC ELECTRONIC OR MECHANICAL, INCLUDING PHOTOCOPIING WITHOUT THE WRITTEN PERMISSION OF SQUIRE AND PARTNERS ARCHITECTS.

The existing walls and gates are to be retained and repaired where necessary.

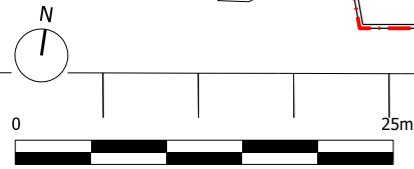
At vehicular entrances, the gates will be widened as necessary for fluid vehicular movement.

- - - - - Site Boundary
- ⊕ Ground Level

OLD MORTLAKE BURIAL GROUND

SOUTH WORPLE WAY

SOUTH WORPLE AVENUE



Notes Added	18/02/19	RB	A
Revision description	Date	Check	Rev

**SQUIRE & PARTNERS**

The Department Store  
 248 Ferndale Road, London SW9 8FR  
 T: 020 7278 5555  
 info@squireandpartners.com  
 www.squireandpartners.com

Project  
**Barnes Hospital**  
 South Worple Way  
 Barnes, SW14 8SU

Drawing  
**Proposed Site Levels**

Drawn	Date	Scale
SSI	18/02/2019	1: 250@A1 1: 500@A3
Job number	Drawing number	Revision
18002	C645_P_00_005	A



NOTES:  
 DO NOT SCALE FROM THIS DRAWING.  
 ALL DIMENSIONS TO BE CHECKED ON SITE.  
 ALL OMISSIONS AND DISCREPANCIES TO BE REPORTED TO THE ARCHITECT IMMEDIATELY.

ALL RIGHTS RESERVED. THIS WORK IS COPYRIGHT AND CANNOT BE REPRODUCED OR COPIED OR MODIFIED IN ANY FORM OR BY ANY MEANS, GRAPHIC ELECTRONIC OR MECHANICAL, INCLUDING PHOTOCOPYING WITHOUT THE WRITTEN PERMISSION OF SQUIRE AND PARTNERS ARCHITECTS.

The existing walls and gates are to be retained and repaired where necessary.

At vehicular entrances, the gates will be widened as necessary for fluid vehicular movement.

- - - - - Site Boundary
- Residential
- Health Care Hub
- Sen School

Revision of Plot Use Boundaries	29/05/19	RB	D
Revision of Plot Use Boundaries	16/05/19	RB	C
Notes Added	18/02/19	RB	B
Plot Boundary	31/10/18	GH	A
Revision description	Date	Check	Rev

**SQUIRE & PARTNERS**

The Department Store  
 248 Ferndale Road, London SW9 8FR  
 T: 020 7278 5555

info@squireandpartners.com  
 www.squireandpartners.com

Project  
**Barnes Hospital**  
 South Worple Way  
 Barnes, SW14 8SU

Drawing  
**Proposed Plot Use**

Drawn	Date	Scale
SSI	29/05/19	1: 250@A1 1: 500@A3
Job number	Drawing number	Revision
18002	C645_P_00_006	D



NOTES:  
 DO NOT SCALE FROM THIS DRAWING.  
 ALL DIMENSIONS TO BE CHECKED ON SITE.  
 ALL OMISSIONS AND DISCREPANCIES TO BE REPORTED TO THE ARCHITECT IMMEDIATELY.

ALL RIGHTS RESERVED. THIS WORK IS COPYRIGHT AND CANNOT BE REPRODUCED OR COPIED OR MODIFIED IN ANY FORM OR BY ANY MEANS, GRAPHIC ELECTRONIC OR MECHANICAL, INCLUDING PHOTOCOPYING WITHOUT THE WRITTEN PERMISSION OF SQUIRE AND PARTNERS ARCHITECTS.

The existing walls and gates are to be retained and repaired where necessary.

At vehicular entrances, the gates will be widened as necessary for fluid vehicular movement.

- - - - - Site Boundary
- Residential
- Healthcare Hub
- SEN School

Plot Boundaries	29/05/19	RB	E
Notes Added	18/02/19	RB	D
SEN Footprint Revision	21/11/18	RB	C
SEN Footprint Revision	15/11/18	GH	B
HH Footprint Revision	31/10/18	GH	A
Revision description	Date	Check	Rev

## SQUIRE & PARTNERS

The Department Store  
 248 Ferndale Road, London SW9 8FR  
 T: 020 7278 5555

info@squireandpartners.com  
 www.squireandpartners.com

Project  
**Barnes Hospital**  
 South Worple Way  
 Barnes, SW14 8SU

Drawing  
**Proposed Building Uses**

Drawn	Date	Scale
SSI	29/05/19	1: 250@A1 1: 500@A3
Job number	Drawing number	Revision
18002	C645_P_00_007	E



NOTES:  
 DO NOT SCALE FROM THIS DRAWING.  
 ALL DIMENSIONS TO BE CHECKED ON SITE.  
 ALL OMISSIONS AND DISCREPANCIES TO BE REPORTED TO THE ARCHITECT IMMEDIATELY.

ALL RIGHTS RESERVED. THIS WORK IS COPYRIGHT AND CANNOT BE REPRODUCED OR COPIED OR MODIFIED IN ANY FORM OR BY ANY MEANS, GRAPHIC ELECTRONIC OR MECHANICAL, INCLUDING PHOTOCOPIING WITHOUT THE WRITTEN PERMISSION OF SQUIRE AND PARTNERS ARCHITECTS.

The existing walls and gates are to be retained and repaired where necessary.

At vehicular entrances, the gates will be widened as necessary for fluid vehicular movement.

- - - - - Site Boundary
- 1 Storey
- 2 Storey
- 2.5 Storey
- 2.5 / 3 Storey
- 3 Storey

OLD MORTLAKE BURIAL GROUND

SOUTH WORPLE WAY

SOUTH WORPLE AVENUE

Notes Added	26/03/19	RB	E
Notes Added	18/02/19	RB	D
SEN Footprint Revision	21/11/18	RB	C
SEN Footprint Revision	15/11/18	GH	B
HH Footprint Revision	31/10/18	GH	A
Revision description	Date	Check	Rev

**SQUIRE & PARTNERS**

The Department Store  
 248 Ferndale Road, London SW9 8FR  
 T: 020 7278 5555  
 info@squireandpartners.com  
 www.squireandpartners.com

Project  
**Barnes Hospital**  
 South Worple Way  
 Barnes, SW14 8SU

Drawing  
**Proposed Maximum Storey Heights**

Drawn	Date	Scale
SSI	26/04/2019	1: 250@A1 1: 500@A3
Job number	Drawing number	Revision
18002	C645_P_00_008	E







NOTES:  
 DO NOT SCALE FROM THIS DRAWING.  
 ALL DIMENSIONS TO BE CHECKED ON SITE.  
 ALL OMISSIONS AND DISCREPANCIES TO BE REPORTED TO THE ARCHITECT IMMEDIATELY.

ALL RIGHTS RESERVED. THIS WORK IS COPYRIGHT AND CANNOT BE REPRODUCED OR COPIED OR MODIFIED IN ANY FORM OR BY ANY MEANS, GRAPHIC ELECTRONIC OR MECHANICAL, INCLUDING PHOTOCOPIING WITHOUT THE WRITTEN PERMISSION OF SQUIRE AND PARTNERS ARCHITECTS.

The existing walls and gates are to be retained and repaired where necessary.

At vehicular entrances, the gates will be widened as necessary for fluid vehicular movement.

- - - - - Site Boundary
- Maximum Extent of Projecting Window Bays at First Floor and Second Floor Levels
- Maximum Extent of Principal Massing

Revision description	Date	Check	Rev
Notes Added	18/02/19	RB	D
SEN Footprint Revision	21/11/18	RB	C
SEN Footprint Revision	15/11/18	GH	B
HH Footprint Revision	31/10/18	GH	A

**SQUIRE & PARTNERS**

The Department Store  
 248 Ferndale Road, London SW9 8FR  
 T: 020 7278 5555  
 info@squireandpartners.com  
 www.squireandpartners.com

Project  
**Barnes Hospital**  
 South Worple Way  
 Barnes, SW14 8SU

Drawing  
**Maximum Building Extents**

Drawn	Date	Scale
SSI	18/02/2019	1: 250@A1 1: 500@A3
Job number	Drawing number	Revision
18002	C645_P_00_009	D



NOTES:  
 DO NOT SCALE FROM THIS DRAWING.  
 ALL DIMENSIONS TO BE CHECKED ON SITE.  
 ALL OMISSIONS AND DISCREPANCIES TO BE REPORTED TO THE ARCHITECT IMMEDIATELY.  
 ALL RIGHTS RESERVED. THIS WORK IS COPYRIGHT AND CANNOT BE REPRODUCED OR COPIED OR MODIFIED IN ANY FORM OR BY ANY MEANS, GRAPHIC ELECTRONIC OR MECHANICAL, INCLUDING PHOTOCOPYING WITHOUT THE WRITTEN PERMISSION OF SQUIRE AND PARTNERS ARCHITECTS.

The existing walls and gates are to be retained and repaired where necessary.  
 At vehicular entrances, the gates will be widened as necessary for fluid vehicular movement.

- - - - - Site Boundary
- - - - - Cycle Access Route
- - - - - Pedestrian Access Route
- █ Residential Short Stay Cycle Store
- █ Health Hub Visitor Cycle Store
- █ Health Hub Staff Cycle Store
- █ SEN School Visitor Cycle Store
- █ SEN School Staff Cycle Store

Revision description	Date	Check	Rev
Site Access Revision	18/02/19	RB	D
SEN Footprint Revision	21/11/18	RB	C
SEN Footprint Revision	15/11/18	GH	B
HH Footprint Revision	31/10/18	GH	A

**SQUIRE & PARTNERS**  
 The Department Store  
 248 Ferndale Road, London SW9 8FR  
 T: 020 7278 5555  
 info@squireandpartners.com  
 www.squireandpartners.com

Project  
**Barnes Hospital**  
 South Worple Way  
 Barnes, SW14 8SU

Drawing  
**Proposed Pedestrian & Cycle Access Plan**

Drawn	Date	Scale
SSI	18/02/2019	1: 250@A1 1: 500@A3
Job number	Drawing number	Revision
18002	C645_P_00_010	D



NOTES:  
 DO NOT SCALE FROM THIS DRAWING.  
 ALL DIMENSIONS TO BE CHECKED ON SITE.  
 ALL OMISSIONS AND DISCREPANCIES TO BE REPORTED TO THE ARCHITECT IMMEDIATELY.

ALL RIGHTS RESERVED. THIS WORK IS COPYRIGHT AND CANNOT BE REPRODUCED OR COPIED OR MODIFIED IN ANY FORM OR BY ANY MEANS, GRAPHIC ELECTRONIC OR MECHANICAL, INCLUDING PHOTOCOPYING WITHOUT THE WRITTEN PERMISSION OF SQUIRE AND PARTNERS ARCHITECTS.

The existing walls and gates are to be retained and repaired where necessary.

At vehicular entrances, the gates will be widened as necessary for fluid vehicular movement.

- - - - - Site Boundary
- - - - - Vehicular Access Route
- - - - - Fire Engine Alternative Access
- Health Hub Car Parking Spaces
- SEN School Car Parking Spaces

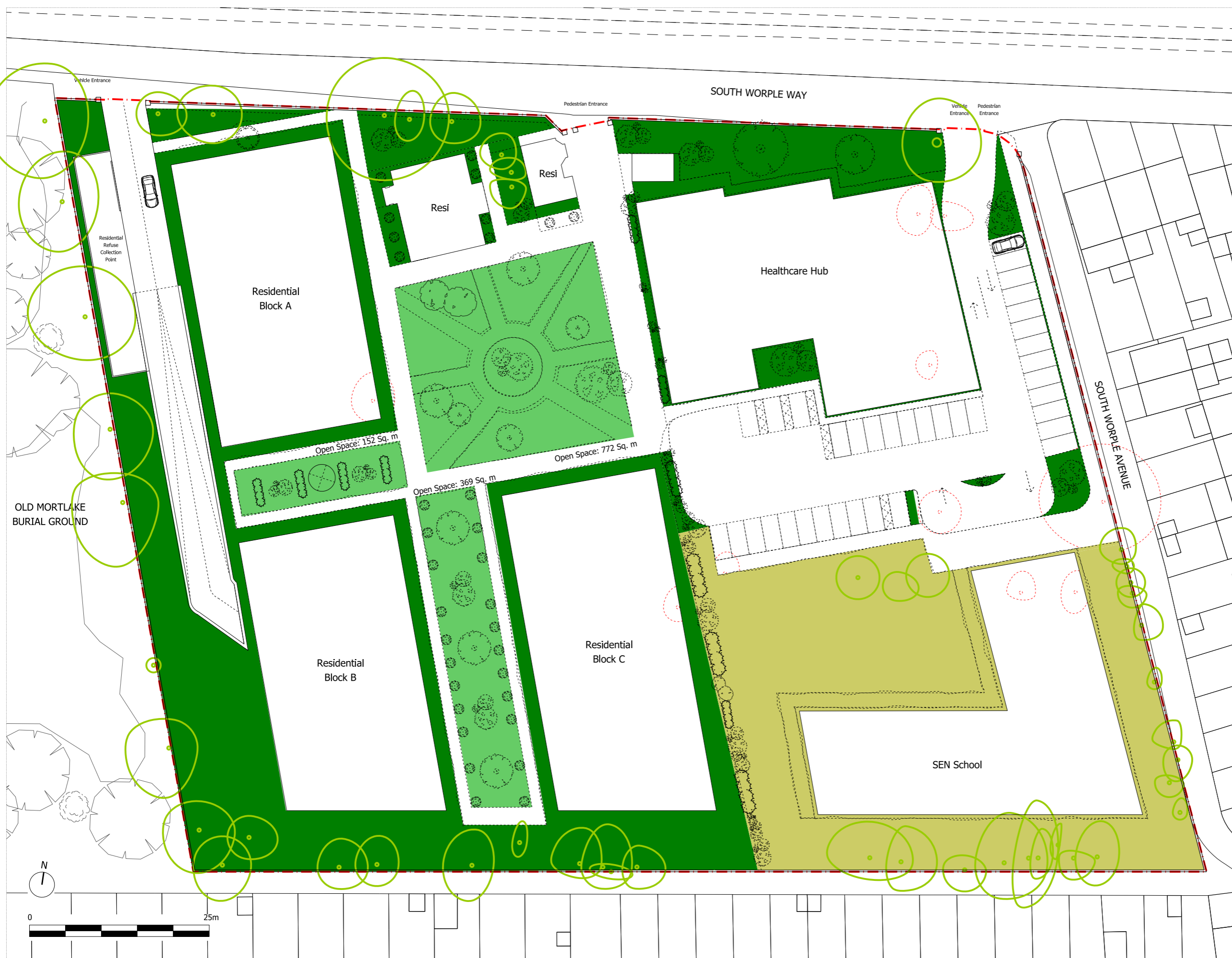
Site Access Revision	18/02/19	RB	D
SEN Footprint Revision	21/11/18	RB	C
SEN Footprint Revision	15/11/18	GH	B
HM Footprint Revision	31/10/18	GH	A
Revision description	Date	Check	Rev

**SQUIRE & PARTNERS**  
 The Department Store  
 248 Ferndale Road, London SW9 8FR  
 T: 020 7278 5555  
 info@squireandpartners.com  
 www.squireandpartners.com

Project  
**Barnes Hospital**  
 South Worple Way  
 Barnes, SW14 8SU

Drawing  
**Proposed Vehicular Access Plan**

Drawn	Date	Scale
SSI	18/02/2019	1:250@A1 1:500@A3
Job number	Drawing number	Revision
18002	C645_P_00_011	D



NOTES:  
 DO NOT SCALE FROM THIS DRAWING.  
 ALL DIMENSIONS TO BE CHECKED ON SITE.  
 ALL OMISSIONS AND DISCREPANCIES TO BE REPORTED TO THE ARCHITECT IMMEDIATELY.

ALL RIGHTS RESERVED. THIS WORK IS COPYRIGHT AND CANNOT BE REPRODUCED OR COPIED OR MODIFIED IN ANY FORM OR BY ANY MEANS, GRAPHIC ELECTRONIC OR MECHANICAL, INCLUDING PHOTOCOPYING WITHOUT THE WRITTEN PERMISSION OF SQUIRE AND PARTNERS ARCHITECTS.

The existing walls and gates are to be retained and repaired where necessary.

At vehicular entrances, the gates will be widened as necessary for fluid vehicular movement.

- - - - - Site Boundary
- Open Space With Indicative Planting & Managed Public Access
- Private External Amenity Space
- Soft Landscaping
- Existing Trees Retained
- Existing Trees To Be Removed

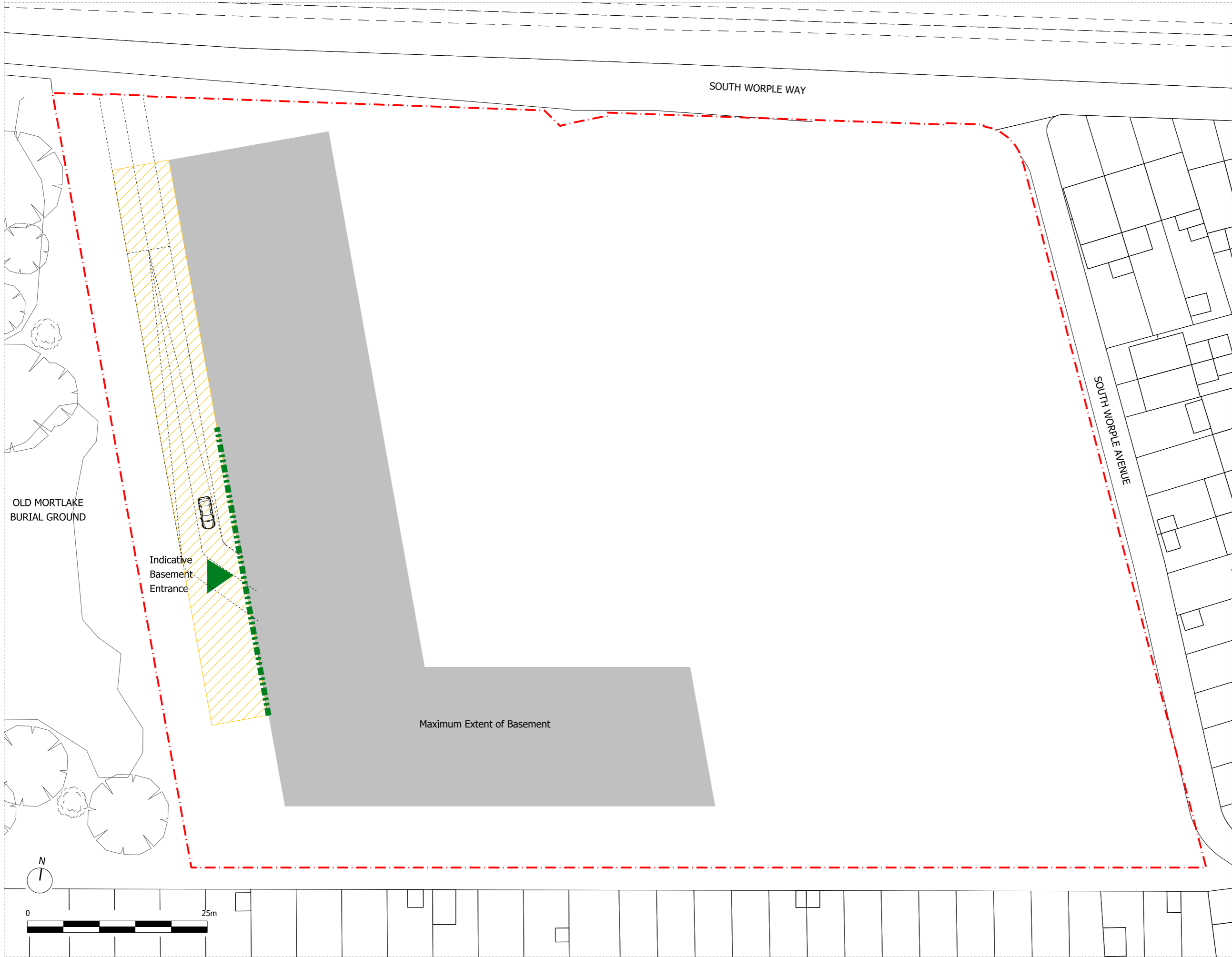
Site Access & Landscape Revision	18/02/19	RB	D
SEN Footprint & Landscape Revision	21/11/18	RB	C
SEN Footprint Revision	15/11/18	GH	B
HH Footprint Revision	31/10/18	GH	A
Revision description	Date	Check	Rev

**SQUIRE & PARTNERS**  
 The Department Store  
 248 Ferndale Road, London SW9 8FR  
 T: 020 7276 5555  
 info@squireandpartners.com  
 www.squireandpartners.com

Project  
**Barnes Hospital**  
 South Worple Way  
 Barnes, SW14 8SU

Drawing  
**Proposed Public Realm & Landscaping**

Drawn	Date	Scale
SSI	29/05/2019	1:250@A1 1:500@A3
Job number	Drawing number	Revision
18002	C645_P_00_012	D






NOTES:  
 DO NOT SCALE FROM THIS DRAWING.  
 ALL DIMENSIONS TO BE CHECKED ON SITE.  
 ALL OMISSIONS AND DISCREPANCIES TO BE REPORTED TO THE ARCHITECT IMMEDIATELY.

ALL RIGHTS RESERVED. THIS WORK IS COPYRIGHT AND CANNOT BE REPRODUCED OR COPIED OR MODIFIED IN ANY FORM OR BY ANY MEANS, GRAPHIC ELECTRONIC OR MECHANICAL, INCLUDING PHOTOCOPYING WITHOUT THE WRITTEN PERMISSION OF SQUIRE AND PARTNERS ARCHITECTS.

The existing walls and gates are to be retained and repaired where necessary.

At vehicular entrances, the gates will be widened as necessary for fluid vehicular movement.

-  Site Boundary
-  Permitted Zone for Ramp Entrance
-  Permitted Zone for Ramp Location

Site Access Revision	18/02/19	RB	A
Revision description	Date	Check	Rev

**SQUIRE & PARTNERS**

The Department Store  
 248 Ferndale Road, London SW9 8FR  
 T: 020 7278 5555  
 info@squireandpartners.com  
 www.squireandpartners.com

Project  
**Barnes Hospital**  
 South Worple Way  
 Barnes, SW14 8SU

Drawing  
**Maximum Building Extent**  
**Basement Plan**

Drawn	Date	Scale
RLe	18/02/2019	1: 250@A1 1: 500@A3
Job number	Drawing number	Revision
18002	C645_P_00_013	A

10.2 SEN School - Alternative Footprint - Drawing List

18002\_C645\_P\_00\_014 SEN School Option 2 - Proposed Building uses

18002\_C645\_P\_00\_015 SEN School Option 2 - Proposed Maximum Storey Heights

18002\_C645\_P\_00\_016 SEN School Option 2 - Maximum Building Extents

18002\_C645\_P\_00\_017 SEN School Option 2 - Pedestrian and Cycle Access

18002\_C645\_P\_00\_018 SEN School Option 2 - Vehicular Access

18002\_C645\_P\_00\_019 SEN School Option 2 - Public Realm and Landscaping



NOTES:  
 DO NOT SCALE FROM THIS DRAWING.  
 ALL DIMENSIONS TO BE CHECKED ON SITE.  
 ALL OMISSIONS AND DISCREPANCIES TO BE REPORTED TO THE ARCHITECT IMMEDIATELY.

ALL RIGHTS RESERVED. THIS WORK IS COPYRIGHT AND CANNOT BE REPRODUCED OR COPIED OR MODIFIED IN ANY FORM OR BY ANY MEANS, GRAPHIC ELECTRONIC OR MECHANICAL, INCLUDING PHOTOCOPYING WITHOUT THE WRITTEN PERMISSION OF SQUIRE AND PARTNERS ARCHITECTS.

The existing walls and gates are to be retained and repaired where necessary.

At vehicular entrances, the gates will be widened as necessary for fluid vehicular movement.

- . - . - . Site Boundary
- Residential
- Healthcare Hub
- SEN School

Plot Boundaries	29/05/19	RB	E
Notes Added	18/02/19	RB	D
SEN Footprint Revision	21/11/18	RB	C
SEN Footprint Revision	15/11/18	GH	B
HH Footprint Revision	31/10/18	GH	A
Revision description	Date	Check	Rev

### SQUIRE & PARTNERS

The Department Store  
 248 Ferndale Road, London SW9 8FR  
 T: 020 7278 5555  
 info@squireandpartners.com  
 www.squireandpartners.com

Project  
**Barnes Hospital**  
 South Worple Way  
 Barnes, SW14 8SU

Drawing  
**SEN School Option 2**  
 Proposed Building Uses

Drawn	Date	Scale
SSI	29/05/2019	1:250@A1 1:500@A3
Job number	Drawing number	Revision
18002	C645_P_00_014	E



NOTES:  
 DO NOT SCALE FROM THIS DRAWING.  
 ALL DIMENSIONS TO BE CHECKED ON SITE.  
 ALL OMISSIONS AND DISCREPANCIES TO BE REPORTED TO THE ARCHITECT IMMEDIATELY.

ALL RIGHTS RESERVED. THIS WORK IS COPYRIGHT AND CANNOT BE REPRODUCED OR COPIED OR MODIFIED IN ANY FORM OR BY ANY MEANS, GRAPHIC ELECTRONIC OR MECHANICAL, INCLUDING PHOTOCOPIING WITHOUT THE WRITTEN PERMISSION OF SQUIRE AND PARTNERS ARCHITECTS.

The existing walls and gates are to be retained and repaired where necessary.

At vehicular entrances, the gates will be widened as necessary for fluid vehicular movement.

- - - - - Site Boundary
- 1 Storey
- 2 Storey
- 2.5 Storey
- 2.5 / 3 Storey
- 3 Storey

Notes Added	26/04/19	RB	E
Notes Added	18/02/19	RB	D
SEN Footprint Revision	21/11/18	RB	C
SEN Footprint Revision	15/11/18	GH	B
HH Footprint Revision	31/10/18	GH	A
Revision description	Date	Check	Rev

**SQUIRE & PARTNERS**

The Department Store  
 248 Ferndale Road, London SW9 8FR  
 T: 020 7278 5555

info@squireandpartners.com  
 www.squireandpartners.com

Project  
**Barnes Hospital**  
 South Worple Way  
 Barnes, SW14 8SU

Drawing  
**SEN School Option 2**  
 Proposed Maximum Storey Heights

Drawn	Date	Scale
SSI	26/02/2019	1: 250@A1 1: 500@A3
Job number	Drawing number	Revision
18002	C645_P_00_015	E

OLD MORTLAKE BURIAL GROUND







NOTES:  
 DO NOT SCALE FROM THIS DRAWING.  
 ALL DIMENSIONS TO BE CHECKED ON SITE.  
 ALL OMISSIONS AND DISCREPANCIES TO BE REPORTED TO THE ARCHITECT IMMEDIATELY.

ALL RIGHTS RESERVED. THIS WORK IS COPYRIGHT AND CANNOT BE REPRODUCED OR COPIED OR MODIFIED IN ANY FORM OR BY ANY MEANS, GRAPHIC ELECTRONIC OR MECHANICAL, INCLUDING PHOTOCOPYING WITHOUT THE WRITTEN PERMISSION OF SQUIRE AND PARTNERS ARCHITECTS.

The existing walls and gates are to be retained and repaired where necessary.

At vehicular entrances, the gates will be widened as necessary for fluid vehicular movement.

- - - - - Site Boundary
- Maximum Extent of Projecting Window Bays at First and Second Floor Levels
- Principal Massing

OLD MORTLAKE BURIAL GROUND



Notes Added	18/02/19	RB	D
SEN Footprint Revision	21/11/18	RB	C
SEN Footprint Revision	15/11/18	GH	B
HH Footprint Revision	31/10/18	GH	A
Revision description	Date	Check	Rev

**SQUIRE & PARTNERS**

The Department Store  
 248 Ferndale Road, London SW9 8FR  
 T: 020 7278 5555  
 info@squireandpartners.com  
 www.squireandpartners.com

Project  
**Barnes Hospital**  
 South Worple Way  
 Barnes, SW14 8SU

Drawing  
**SEN School Option 2**  
 Maximum Building Extents

Drawn	Date	Scale
SSI	18/02/2019	1: 250@A1 1: 500@A3
Job number	Drawing number	Revision
18002	C645_P_00_016	D



NOTES:  
 DO NOT SCALE FROM THIS DRAWING.  
 ALL DIMENSIONS TO BE CHECKED ON SITE.  
 ALL OMISSIONS AND DISCREPANCIES TO BE REPORTED TO THE ARCHITECT IMMEDIATELY.

ALL RIGHTS RESERVED. THIS WORK IS COPYRIGHT AND CANNOT BE REPRODUCED OR COPIED OR MODIFIED IN ANY FORM OR BY ANY MEANS, GRAPHIC ELECTRONIC OR MECHANICAL, INCLUDING PHOTOCOPIING WITHOUT THE WRITTEN PERMISSION OF SQUIRE AND PARTNERS ARCHITECTS.

The existing walls and gates are to be retained and repaired where necessary.

At vehicular entrances, the gates will be widened as necessary for fluid vehicular movement.

- - - - - Site Boundary
- - - - - Cycle Access Route
- - - - - Pedestrian Access Route
- Residential Short Stay Cycle Store
- Health Hub Visitor Cycle Store
- Health Hub Staff Cycle Store
- SEN School Visitor Cycle Store
- SEN School Staff Cycle Store

Revision description	Date	Check	Rev
Site Access Revision	18/02/19	RB	D
SEN Footprint Revision	21/11/18	RB	C
SEN Footprint Revision	15/11/18	GH	B
HH Footprint Revision	31/10/18	GH	A

**SQUIRE & PARTNERS**

The Department Store  
 248 Ferndale Road, London SW9 8FR  
 T: 020 7278 5555  
 info@squireandpartners.com  
 www.squireandpartners.com

Project  
 Barnes Hospital  
 South Worple Way  
 Barnes, SW14 8SU

Drawing  
 SEN School Option 2  
 Proposed Pedestrian & Cycle  
 Access Plan

Drawn	Date	Scale
SSI	18/02/2019	1: 250@A1 1: 500@A3
Job number	Drawing number	Revision
18002	C645_P_00_017	D



NOTES:  
 DO NOT SCALE FROM THIS DRAWING.  
 ALL DIMENSIONS TO BE CHECKED ON SITE.  
 ALL OMISSIONS AND DISCREPANCIES TO BE REPORTED TO THE ARCHITECT IMMEDIATELY.

ALL RIGHTS RESERVED. THIS WORK IS COPYRIGHT AND CANNOT BE REPRODUCED OR COPIED OR MODIFIED IN ANY FORM OR BY ANY MEANS, GRAPHIC ELECTRONIC OR MECHANICAL, INCLUDING PHOTOCOPYING WITHOUT THE WRITTEN PERMISSION OF SQUIRE AND PARTNERS ARCHITECTS.

The existing walls and gates are to be retained and repaired where necessary.

At vehicular entrances, the gates will be widened as necessary for fluid vehicular movement.

- - - - - Site Boundary
- - - - - Vehicular Access Route
- - - - - Fire Engine Alternative Access
- Health Hub Car Parking Spaces
- SEN School Car Parking Spaces

Site Access Revision	18/02/19	RB	D
SEN Footprint Revision	21/11/18	RB	C
SEN Footprint Revision	15/11/18	GH	B
HH Footprint Revision	31/10/18	GH	A
Revision description	Date	Check	Rev

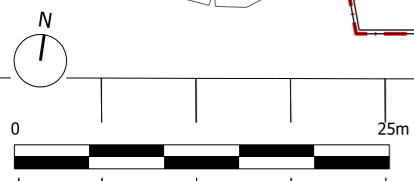
**SQUIRE & PARTNERS**

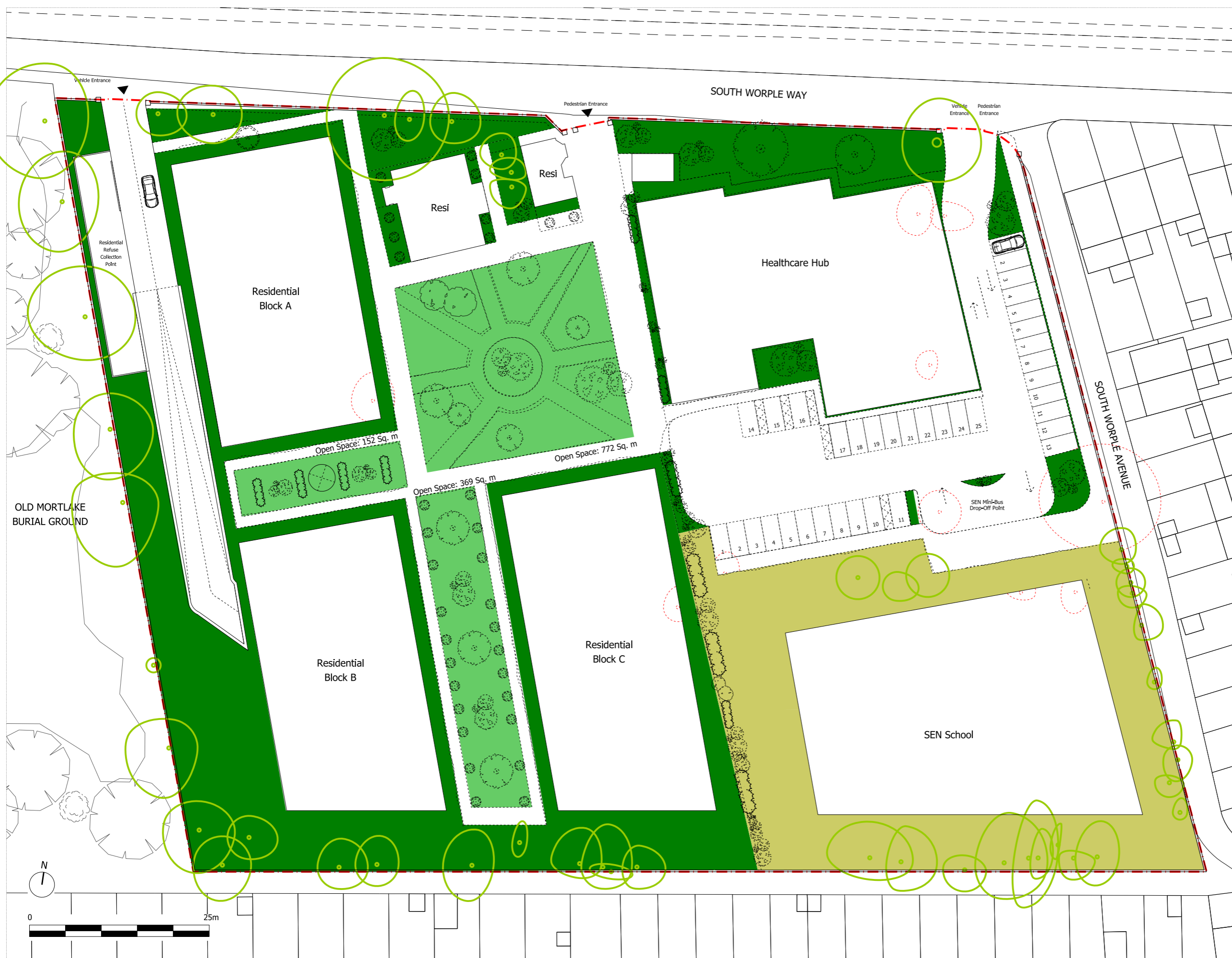
The Department Store  
 248 Ferndale Road, London SW9 8FR  
 T: 020 7278 5555  
 info@squireandpartners.com  
 www.squireandpartners.com

Project  
 Barnes Hospital  
 South Worple Way  
 Barnes, SW14 8SU

Drawing  
 SEN School Option 2  
 Proposed Vehicular Access Plan

Drawn	Date	Scale
SSI	18/02/2019	1: 250@A1 1: 500@A3
Job number	Drawing number	Revision
18002	C645_P_00_018	D





NOTES:  
 DO NOT SCALE FROM THIS DRAWING.  
 ALL DIMENSIONS TO BE CHECKED ON SITE.  
 ALL OMISSIONS AND DISCREPANCIES TO BE REPORTED TO THE ARCHITECT IMMEDIATELY.

ALL RIGHTS RESERVED. THIS WORK IS COPYRIGHT AND CANNOT BE REPRODUCED OR COPIED OR MODIFIED IN ANY FORM OR BY ANY MEANS, GRAPHIC ELECTRONIC OR MECHANICAL, INCLUDING PHOTOCOPIING WITHOUT THE WRITTEN PERMISSION OF SQUIRE AND PARTNERS ARCHITECTS.

The existing walls and gates are to be retained and repaired where necessary.

At vehicular entrances, the gates will be widened as necessary for fluid vehicular movement.

- - - - Site Boundary
- Open Space With Indicative Planting & Managed Public Access
- Private External Amenity Space
- Soft Landscaping
- Existing Trees Retained
- Existing Trees To Be Removed

Site Access & Landscape Revision	18/02/19	RB	D
SEN Footprint & Landscape Revision	21/11/18	RB	C
SEN Footprint Revision	15/11/18	GH	B
HH Footprint Revision	31/10/18	GH	A
Revision description	Date	Check	Rev

**SQUIRE & PARTNERS**

The Department Store  
 248 Ferndale Road, London SW9 8FR  
 T: 020 7278 5555

info@squireandpartners.com  
 www.squireandpartners.com

Project  
 Barnes Hospital  
 South Worple Way  
 Barnes, SW14 8SU

Drawing  
 SEN School Option 2  
 Proposed Public Realm & Landscaping

Drawn	Date	Scale
RLe	29/05/2019	1: 250@A1 1: 500@A3
Job number	Drawing number	Revision
18002	C645_P_00_019	D

