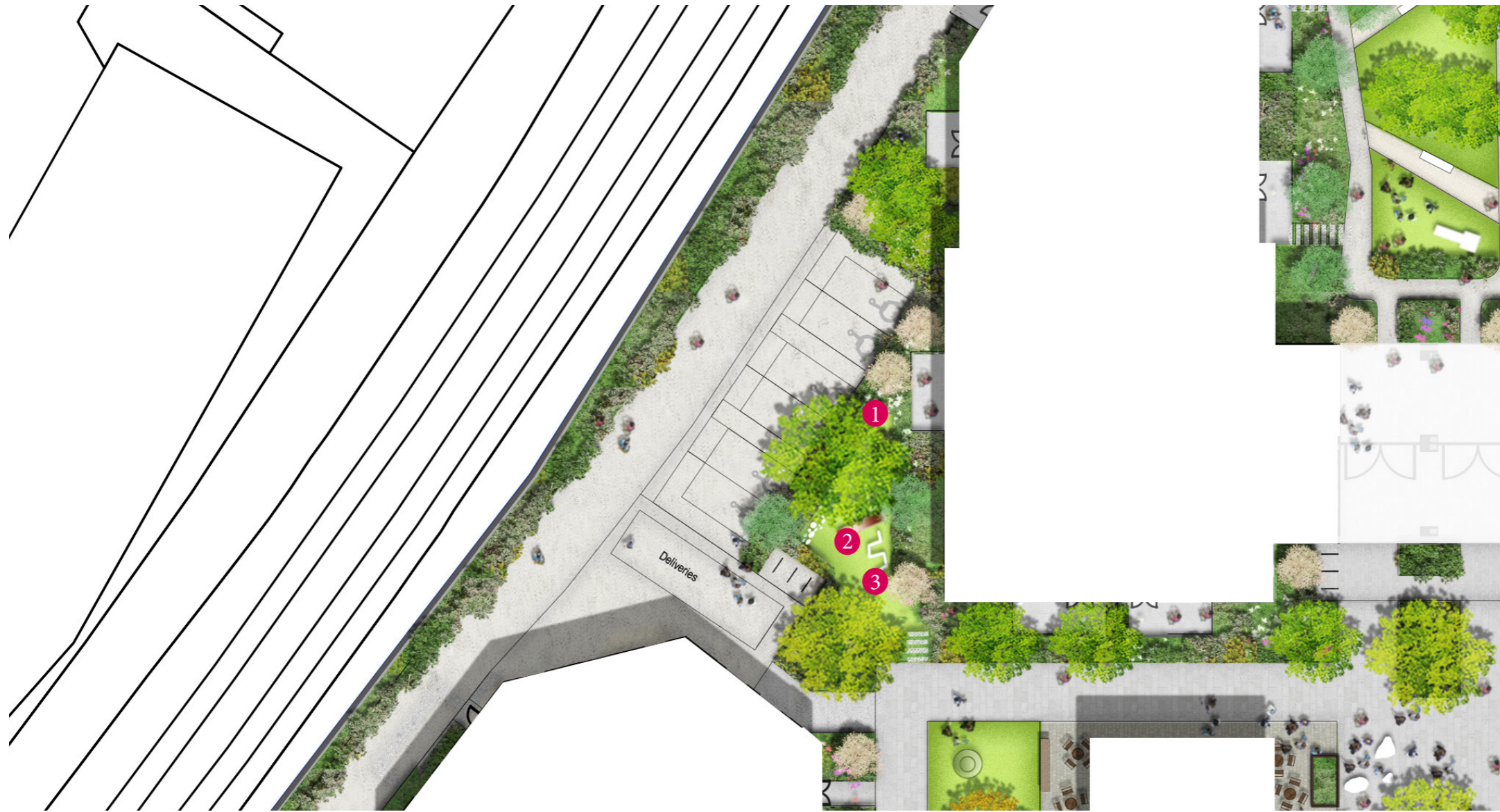


1.42 Play Strategy - Homezones/shared space - carpark 1 design



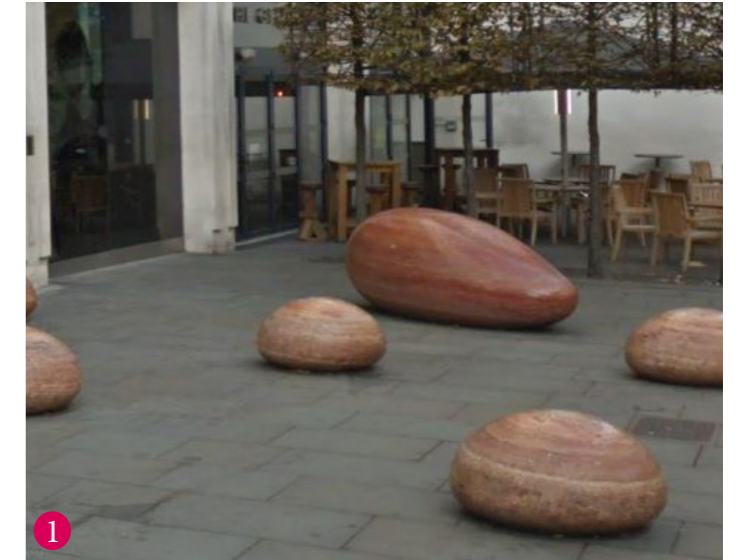
Play spaces - local play



1.43 Play Strategy - Public open space



Play spaces - doorstep and local play



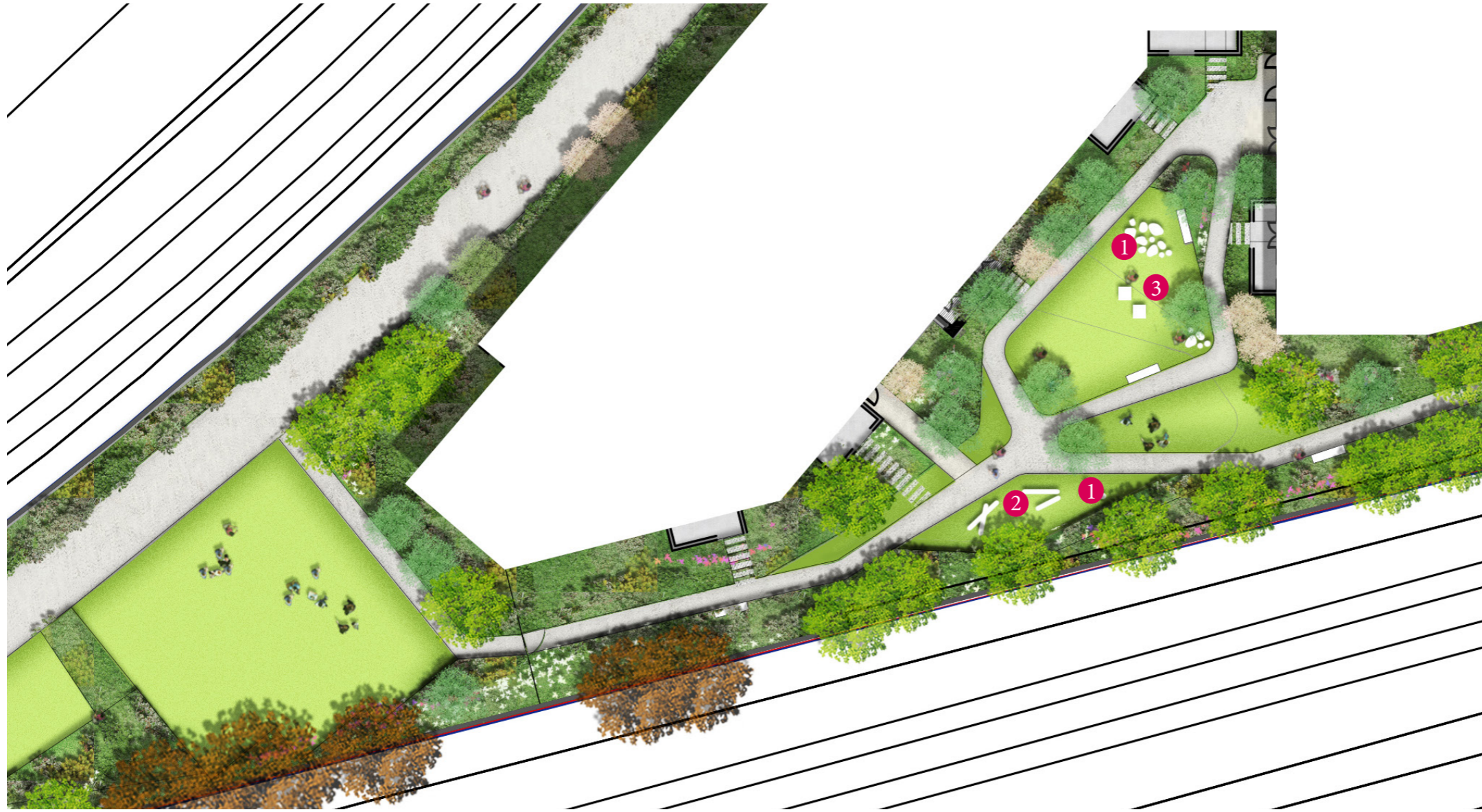
1.44 Play Strategy - Homezones/shared space - carpark 2 design



Play spaces - doorstep and local play



1.45 Play Strategy - Residential amenity courtyards - Block C design



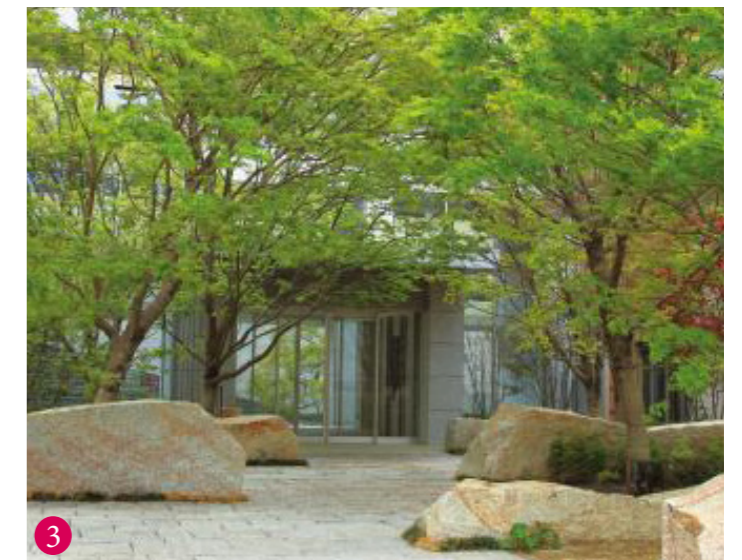
Play spaces - doorstep and local play



1.46 Play Strategy - Residential amenity courtyards - Block D design



Play spaces - doorstep and local play





Assael

Assael Architecture Limited
123 Upper Richmond Road
London SW15 2TL

☎ +44 (0)207 736 7744
✉ info@assael.co.uk
🌐 www.assael.co.uk

Document Control Form

| | |
|-----------------|-------------------------|
| Project number | A3004 |
| Project title | Manor Road |
| Document title | Landscape Addendum |
| Client | Avanton |
| Document status | Revision R1 |
| Date of issue | May 2019 |
| Prepared by | Lizzie Hennig, Admin |
| Checked by | Holly Barker, Architect |

Assael Architecture Limited has prepared this document in accordance with the instructions of the Client under the agreed Terms of Appointment. This document is for the sole and specific use of the Client and Assael Architecture shall not be responsible for any use of the document or its contents for any purpose other than that for which it was prepared and provided. Should the Client require to pass copies of the document to other parties for information, the whole of the report should be so copied, but no professional liability or warranty shall be extended to other parties by Assael Architecture in this connection without the explicit written agreement thereto by Assael Architecture Limited.

© 2018 Assael Architecture Limited

Assael Architecture Limited owns the copyright of this design and document which must not be reproduced in whole or part without the written permission of Assael Architecture Limited.

Computer generated photo montages that may be contained in this document that have an image identification number containing the letters 'AVR' conform to our 'Accurate Visual Representation Methodology' as set out by the London View Management Framework. In the absence of the letters 'AVR' the image cannot be used as proof of visual impact but as an 'impression'.

| Status | Revision | Date issued | Prepared by | Checked by |
|-----------|---------------------|-------------------|-------------|------------|
| R1 | For Planning | 20/05/2019 | LH | HB |