



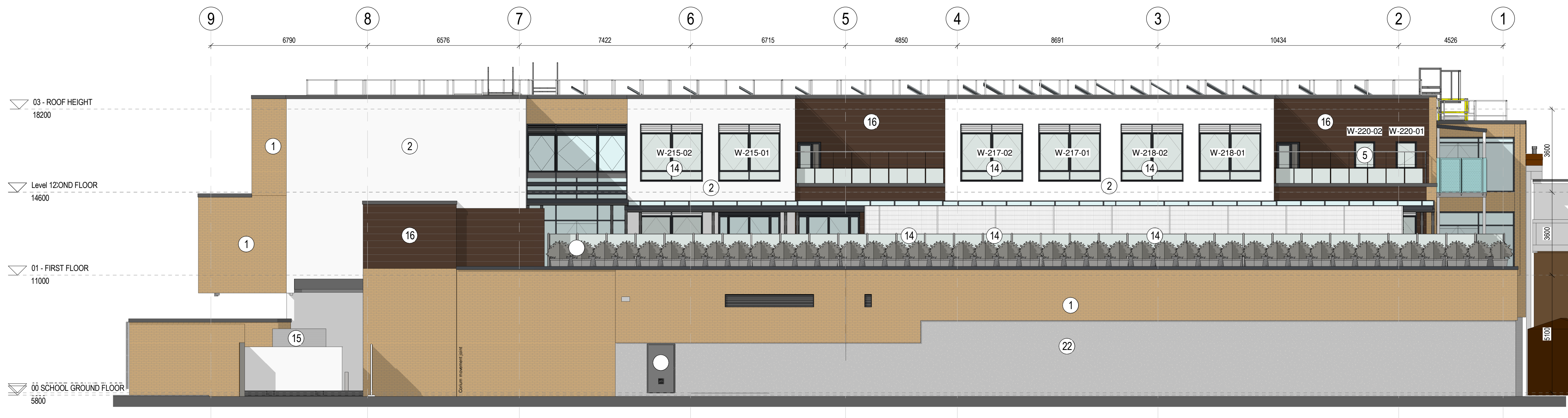
Client's Logo :



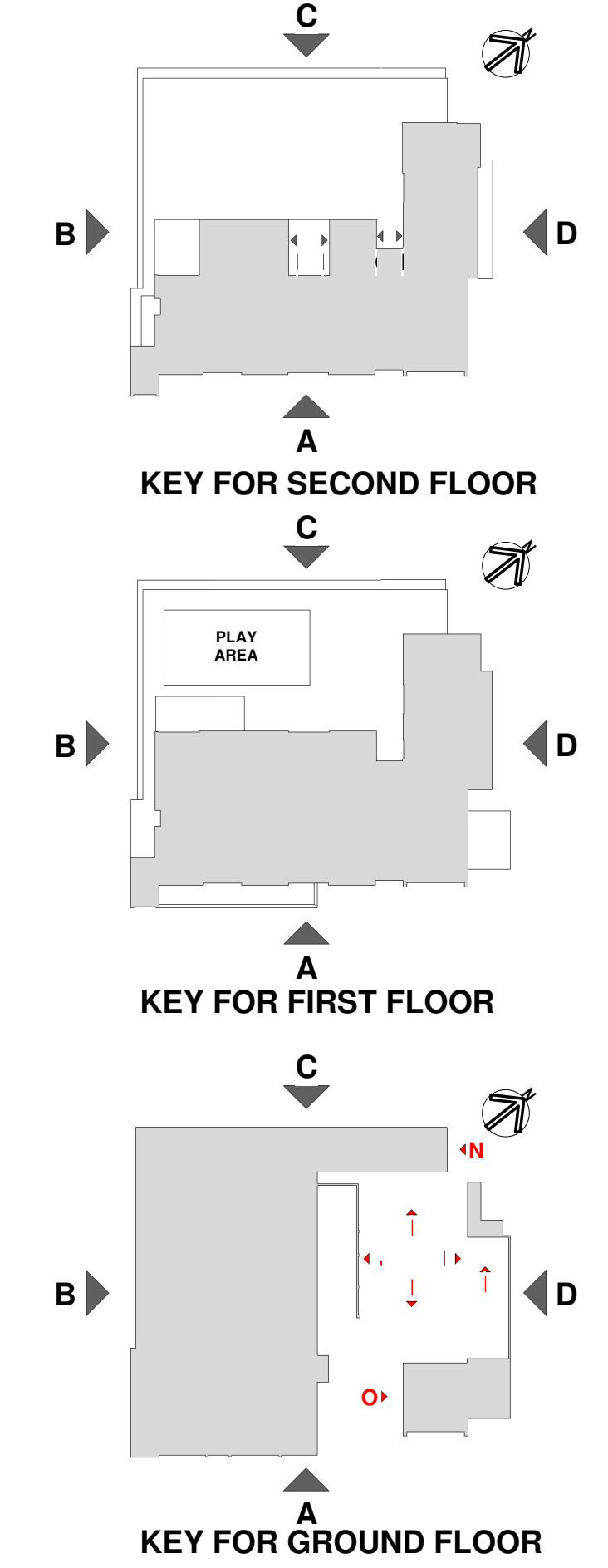
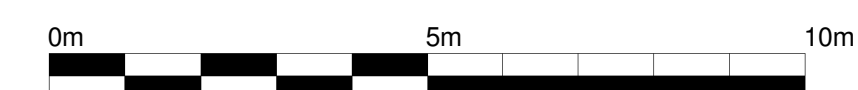
Contractor's Logo :



Elevation A
Scale: 1 : 100



Elevation C
Scale: 1 : 100



REV	DATE	DESCRIPTION	BY
7	05.06.19	Planning Issue	ARD
6	05.03.19	Roof lights omitted; Parapets amended; Canopy added to EXT walkway	LM
5	12.10.18	General update	TN
4	11.09.18	Construction Issue, Lidl signage added	TNG
3	06.08.16	Roof Balustrade added	GCP
2	13.07.18	General Update due to design development	GCP

IN CASE OF DOUBT OR DISCREPANCIES PLEASE REFER TO ARCHITECT FOR INSTRUCTIONS. DRAWING AND SUITABILITY NUMBERS IN ACCORDANCE WITH BS1192:2007. THIS DRAWING SHOULD NOT BE SCALED. THIS DRAWING IS COPYRIGHT.

SUITABILITY NUMBER KEY:		DOCUMENTATION - SIGN-OFF	
WIP	50 - Work in Progress*	A	- Fit for construction
SHARED	S1 - Fit for co-ordination**	B	- Fit for construction, with comments
	S2 - Fit for information	C	- Comprehensive revisions needed
	S3 - Fit for internal review and comment	ARCHIVE	
	S4 - Fit for construction approval	AB	- As Built
		FC	- Final Construction
DOCUMENTATION:	D1 - Fit for costing		* For internal pre-issue usage only.
	D2 - Fit for tender		** For model file usage only.
	D3 - Fit for contractor design		
	D4 - Fit for manufacture/procurement		

boyesrees architects

4th Floor, Greyfriars House
Greyfriars Road, Cardiff CF10 3AL
Tel: 029 2055 8900 Fax: 029 2039 9592
www.boyesrees.co.uk

Registered office: As above Reg No. 295
1683 (England & Wales)

PROJECT TITLE :
Proposed LIDL store on Richmond Road
Twickenham

DRAWING TITLE :
GA Elevations 01 of 05

DRAWN BY : GCP	SCALE : As indicated @ A1
JOB NO : 4862	DATE : 02/12/18

SUITABILITY : S4	REVISION : 7				
PROJECT ORIGIN : 4862	BRA	LEVEL : 00	TYPE : ZZ	DISCIPLINE : DR	NUMBER : A 0201

- LEGEND:
- Facing brick Slip system
 - Insulated render system - colour and finish White
 - Alucobond rainscreen cladding system - RAL 9006
 - Curtain wall - full height glazing, frames to be finished in RAL 7024
 - Windows - glazing frame to be finished in RAL 7024 (Single)
 - Windows - glazing frame to be finished in RAL 7024 (Double)
 - External glazed door (Double) to be finished in RAL 7024
 - External glazed door (Single) to be finished in RAL 7024
 - External steel door (Single) to be finished in RAL 7024
 - External steel door (Double) to be finished in RAL 7024
 - School signage
 - Windows - glazing frame to be finished in RAL 7024 (Single)
 - Windows - glazing frame to be finished in RAL 7024 (Double)
 - Masonry brick wall
 - Timber cladding
 - Louvers panels - colour to match window frames
 - External sliding door finished in RAL 7024 for School
 - External sliding door finished in RAL 7024 for Lidl
 - Bi-folding door to be finished in RAL 7024
 - Lidl store signage
 - In-situ concrete wall

07/06/2019 09:55:51 C:\Users\adnison\Documents\4862-BRA-00-XK-M3-A-090001-RICHMOND LIDL STORE_adnison(Recovery).dwt