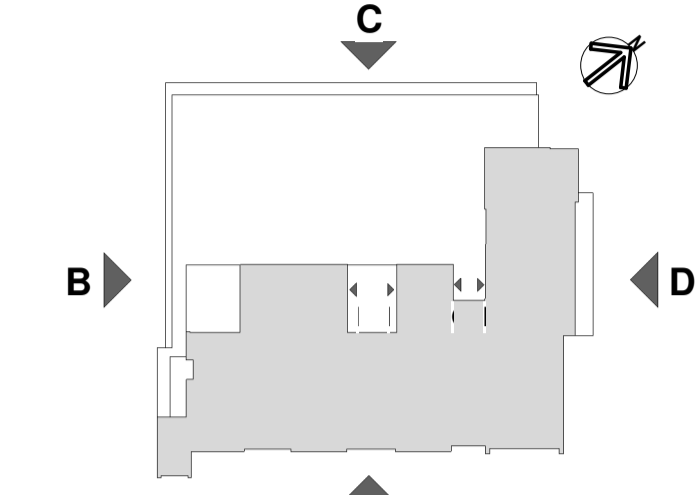




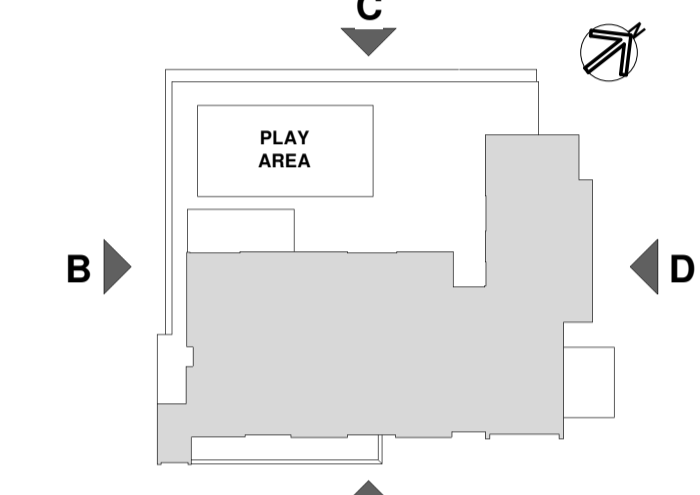
Client's Logo :



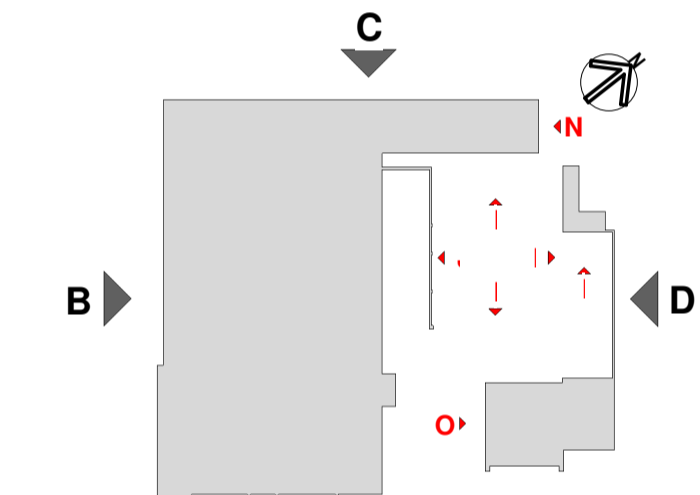
Contractor's Logo:



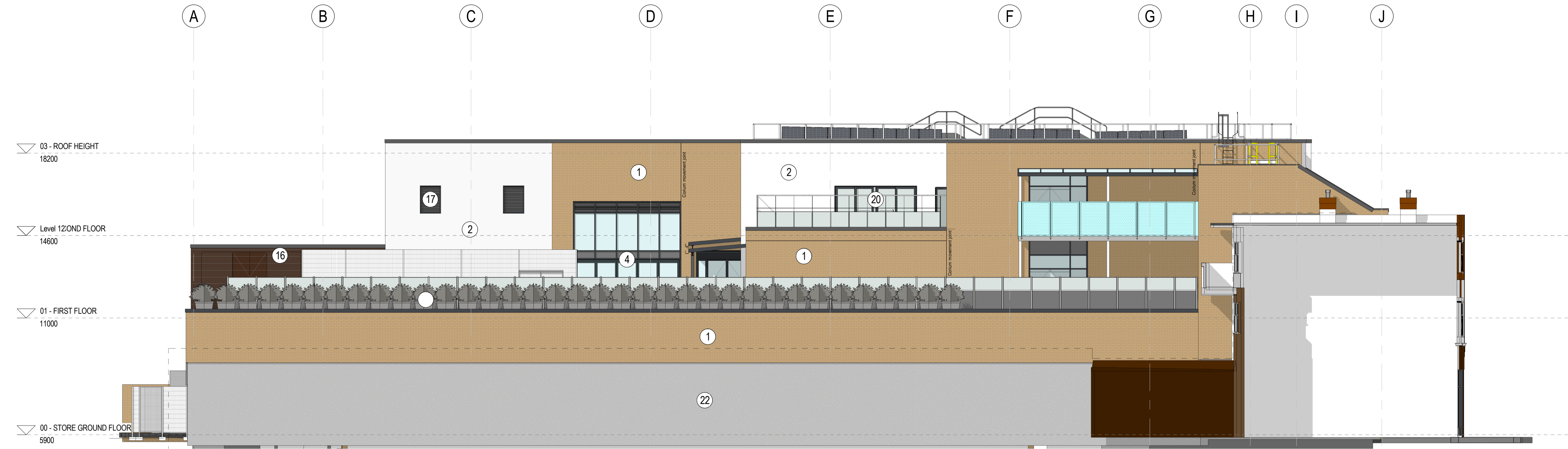
KEY FOR SECOND FLOOR



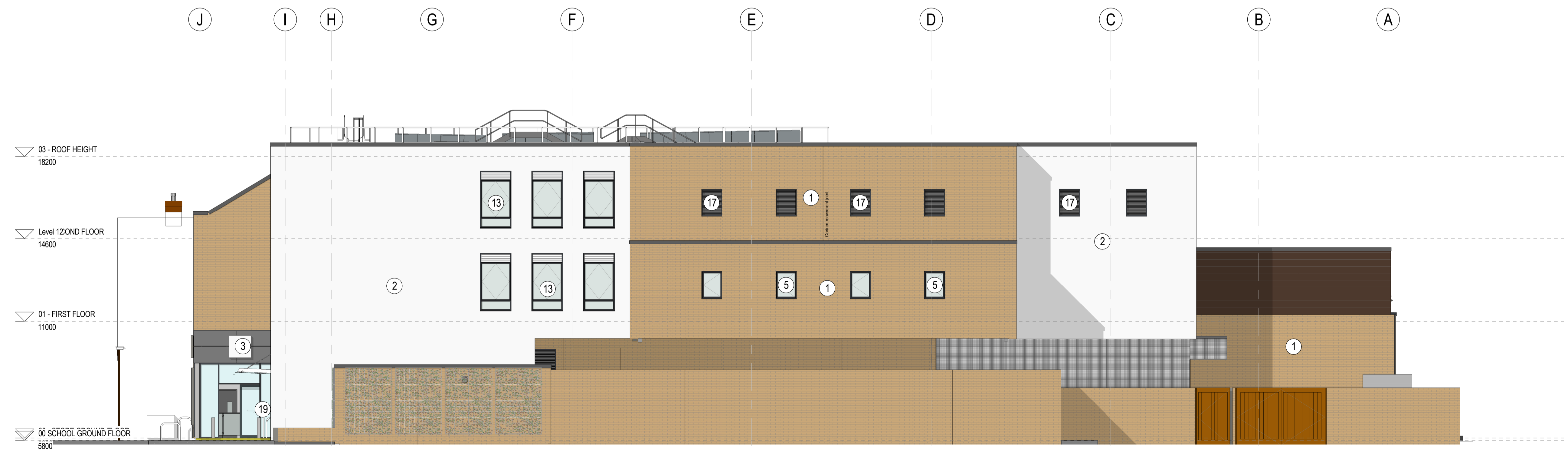
KEY FOR FIRST FLOOR



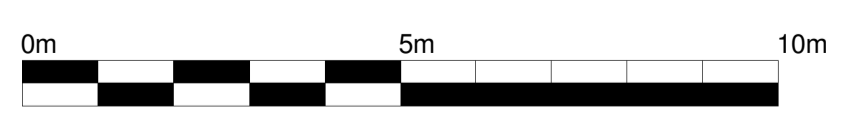
KEY FOR GROUND FLOOR



Elevation B
Scale: 1 : 100



Elevation D
Scale: 1 : 100



LEGEND:

1. Facing brick Slip system
2. Insulated render system - colour and finish White
3. Alucobond rainscreen cladding system - RAL 9006
4. Curtain wall - full height glazing, frames to be finished in RAL 7024
5. Windows - glazing frame to be finished in RAL 7024 (Single)
6. Windows - glazing frame to be finished in RAL 7024 (Double)
7. External glazed door (Single) to be finished in RAL 7024
8. External glazed door (Double) to be finished in RAL 7024
9. Goods delivery door to be finished in RAL 7024
10. External steel door (Single) to be finished in RAL 7024
11. External steel door (Double) to be finished in RAL 7024
12. School signage
13. Windows - glazing frame to be finished in RAL 7024 (Single)
14. Windows - glazing frame to be finished in RAL 7024 (Double)
15. Masonry brick wall
16. Timber cladding
17. Louvres panels - colour to match window frames
18. External sliding door finished in RAL 7024 for School
19. External sliding door finished in RAL 7024 for Lidl
20. Bi-folding door to be finished in RAL 7024
21. Lidl store signage
22. In-situ concrete wall

REV	DATE	DESCRIPTION	BY
5	05.06.19	Planning Issue	ARD
4	05.03.19	Roof lights omitted; Parapets amended; Canopy added to EXT walkway	LM
3	11.09.18	Construction Issue, walls, window louvres and curtain wall updated in line with current design and Key 22 & 23 added to legend	TNG
2	06.08.16	Roof Balustrade added	GCP

IN CASE OF DOUBT OR DISCREPANCIES PLEASE REFER TO ARCHITECT FOR INSTRUCTIONS. DRAWING AND SUITABILITY NUMBERS IN ACCORDANCE WITH BS1192:2007. THIS DRAWING SHOULD NOT BE SCALED. THIS DRAWING IS COPYRIGHT.

SUITABILITY NUMBER KEY:		DOCUMENTATION - SIGN-OFF	
WIP	S0 - Work in Progress*	A	- Fit for construction
SHARED	S1 - Fit for co-ordination**	B	- Fit for construction, with comments
	S2 - Fit for information	C	- Comprehensive revisions needed
	S3 - Fit for internal review and comment	ARCHIVE	AB - As Built
	S4 - Fit for construction approval	FC	- Final Construction
DOCUMENTATION	D1 - Fit for costing		** For internal pre-issue usage only.
	D2 - Fit for tender		** For model file usage only.
	D3 - Fit for contractor design		
	D4 - Fit for manufacture/procurement		

4th Floor, Greyfriars House
Greyfriars Road, Cardiff CF10 3AL
Tel: 029 2055 8900 Fax: 029 2039 9592
www.boyesrees.co.uk
Registered office: As above Reg No. 295
1683 (England & Wales)

PROJECT TITLE :
Proposed LIDL store on Richmond Road
Twickenham

DRAWING TITLE :
GA Elevations 02 of 05

DRAWN BY : GCP SCALE : As indicated @ A1

JOB NO : 4862 DATE : 02/12/18

SUITABILITY :	S4	REVISION :	5	
PROJECT ORIGIN, VOLUME	LEVEL	TYPE	DISCIP	NUMBER
4862 BRA 00	ZZ	DR	A	0202

07/06/2019 09:57:07 C:\Users\adenison\Documents\4862_BRA-00-XX-M3-A-090001-RICHMOND LIDL STORE_adenison(Recovery).dwt