

East Elevation Planning Drawings

Walls

- 1 Proposed Change: Glazed stair core omitted and rear escape combined with store staircase.
Reasons: Rear escape stair rationalised to reduce wasted space and avoid exposed unoccupied space. Removing the stairwell also reduces massing.

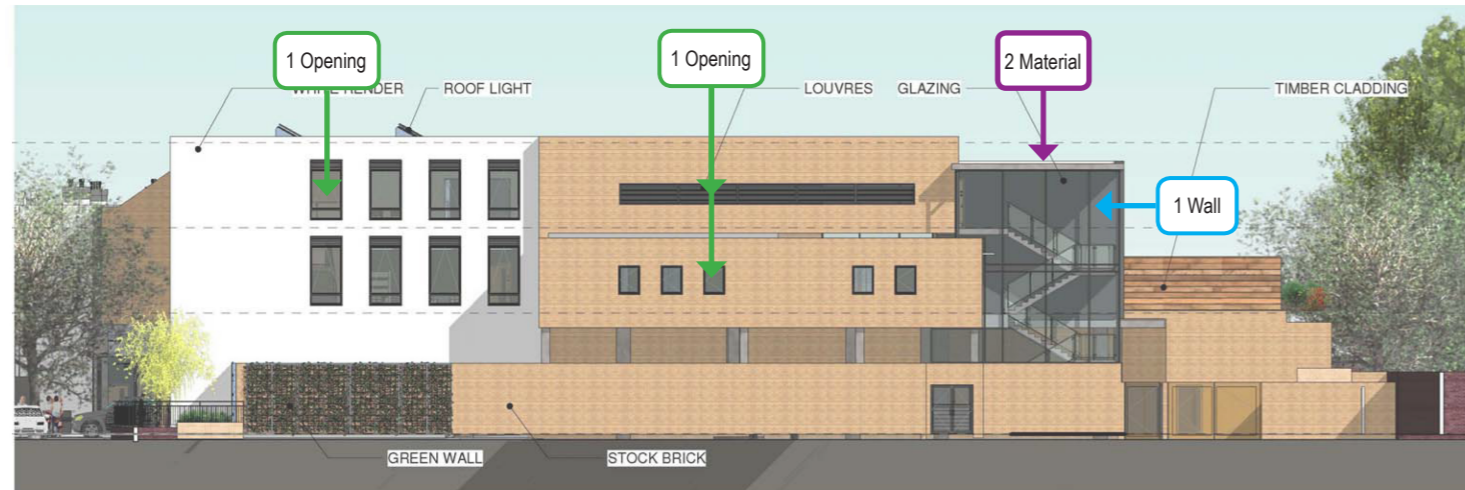
Curtain Walls, Windows and Door Openings

- 1 Proposed Change: Window / louvre design rationalised and aligned.
Reasons: Opening rationalized to suit revised elevation and CDM requirement.

Facade Material Change

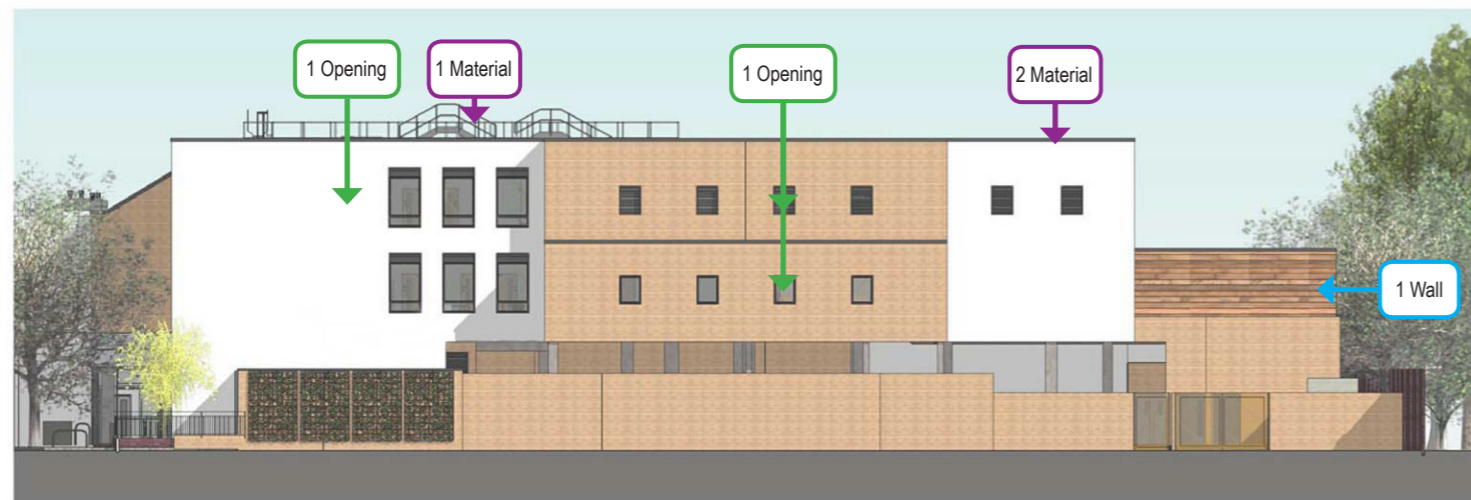
- 1 Proposed Change: Guardrail and man-safe design incorporated.
Reasons: Guard rail and man-safe system required to satisfy current Health and Safety statutory regulations.
- 2 Proposed Change: Roof and parapet levels rationalized.
Reasons: Roof levels simplified to allow easier roof access. Parapet levels adjusted to suit.

ORIGINAL PLANNING ELEVATION



East Elevation (Side Frontage)
Scale: 1 : 250

REVISED PLANNING ELEVATION



East Elevation (Side Frontage)
Scale: 1 : 250

Client's Logo: 

Contractor's Logo: 

REV	DATE	DESCRIPTION	BY
1	24.08.18	Planning Issue	JC

IN CASE OF DISCREPANCY OR DISCREPANCIES PLEASE REFER TO ARCHITECT FOR INSTRUCTIONS. DRAWINGS AND SCHEDULE NUMBERS IN ACCORDANCE WITH BELLIS 2007. THIS DRAWING SHOULD NOT BE SCALED. THIS DRAWING IS COPYRIGHT.

SUITABILITY NUMBER KEY:
 WIP - Work in Progress**
 SHARED - S1 - Fit for co-ordination**
 S2 - Fit for information
 S3 - Fit for internal review and comment
 S4 - Fit for construction approval
 D1 - Fit for costing
 D2 - Fit for tender
 D3 - Fit for contractor design
 D4 - Fit for manufacturing procurement

DOCUMENTATION - SIGN-OFF
 A - Fit for construction
 B - Fit for construction, with comments
 C - Comprehensive revisions needed
 AB - As Built
 FC - Final Construction
 ** For internal pre-issue usage only.
 ** For model file usage only.

boyesrees architects
 4th Floor, Greyfriars House
 Greyfriars Road, Cardiff CF10 3AL
 Tel: 029 2055 8900 Fax: 029 2039 9592
 www.boyesrees.co.uk
 Registered office: As above Reg No: 295 1483
 (England & Wales)

PROJECT TITLE:
 Proposed LIDL store on Richmond Road
 Twickenham

DRAWING TITLE:
 Planning 02 East Elevation Comparison

DRAWN BY: JC **SCALE:** @ A3

JOB NO: 4862 **DATE:** 08/23/18

SUITABILITY:	S2	REVISION:	1
--------------	----	-----------	---

PROJECT	ORIGIN	VOLUME	LEVEL	TYPE	DISCIP	NUMBER
4862	BRA	00	ZZ	DR	A	0252