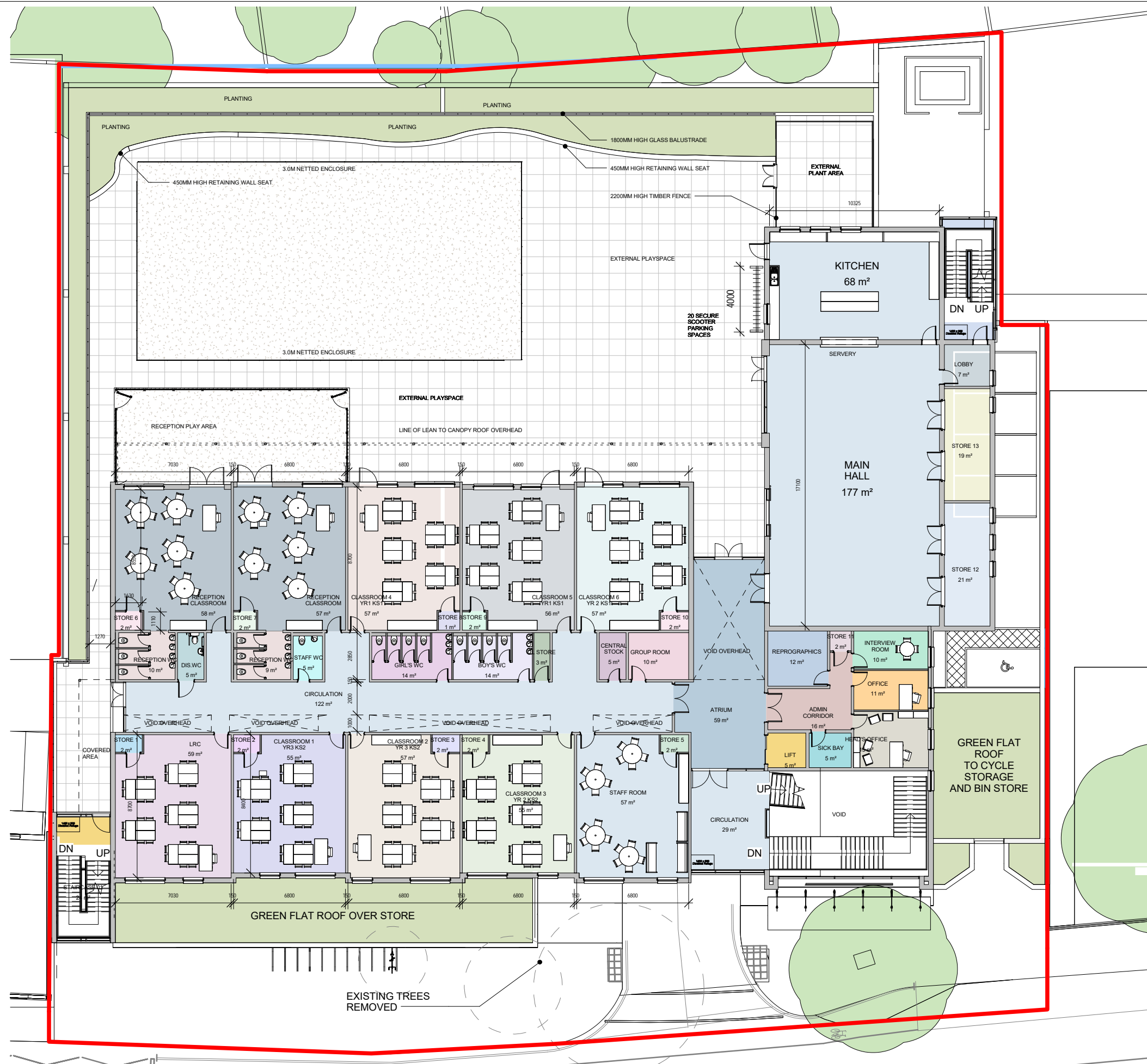




Client's Logo :



REV	DATE	DESCRIPTION	BY
10	16.10.17	Minor note amendments	JC
9	16.10.14	Amendments for planning comment	JC
8	16.10.12	Minor amendments following comments	JC
7	16.09.26	Minor amendments to package	JC
6	16.09.23	Amendments following comments	JC
5	16.09.13	Amendments following Planning advice	JC
4	16.06.10	Removed ownership boundary	ADT

IN CASE OF DOUBT OR DISCREPANCIES PLEASE REFER TO ARCHITECT FOR INSTRUCTIONS. DRAWING AND SUITABILITY NUMBERS IN ACCORDANCE WITH BS1192:2007. THIS DRAWING SHOULD NOT BE SCALED. THIS DRAWING IS COPYRIGHT.

SUITABILITY NUMBER KEY:		DOCUMENTATION - SIGN-OFF	
WIP	S0 - Work in Progress*	A	- Fit for construction
SHARED	S1 - Fit for co-ordination**	B	- Fit for construction, with comments
	S2 - Fit for information	C	- Comprehensive revisions needed
	S3 - Fit for internal review and comment	AB	- As Built
	S4 - Fit for construction approval	FC	- Final Construction
DOCUMENTATION	D1 - Fit for costing	* For internal pre-issue usage only.	
	D2 - Fit for tender	** For model file usage only.	
	D3 - Fit for contractor design		
	D4 - Fit for manufacturer/procurement		

boyesrees architects

4th Floor, Greyfriars House
Greyfriars Road, Cardiff CF10 3AL
Tel: 029 2055 8900 Fax: 029 2039 9592
www.boyesrees.co.uk
Registered office. As above Reg No. 295
1683 (England & Wales)

PROJECT TITLE :
Proposed LIDL store on Richmond Road Twickenham

DRAWING TITLE :
First Floor Plan

DRAWN BY: Author SCALE: 1 : 250 @ A3

JOB NO: 4862 DATE: 05/05/16

SUITABILITY: S2 REVISION: 10

PROJECT	ORIGIN	VOLUME	LEVEL	TYPE	DISCIP.	NUMBER
4862	BRA	00	01	DR	A	010002

FRIST FLOOR PLAN
SCALE 1:250

