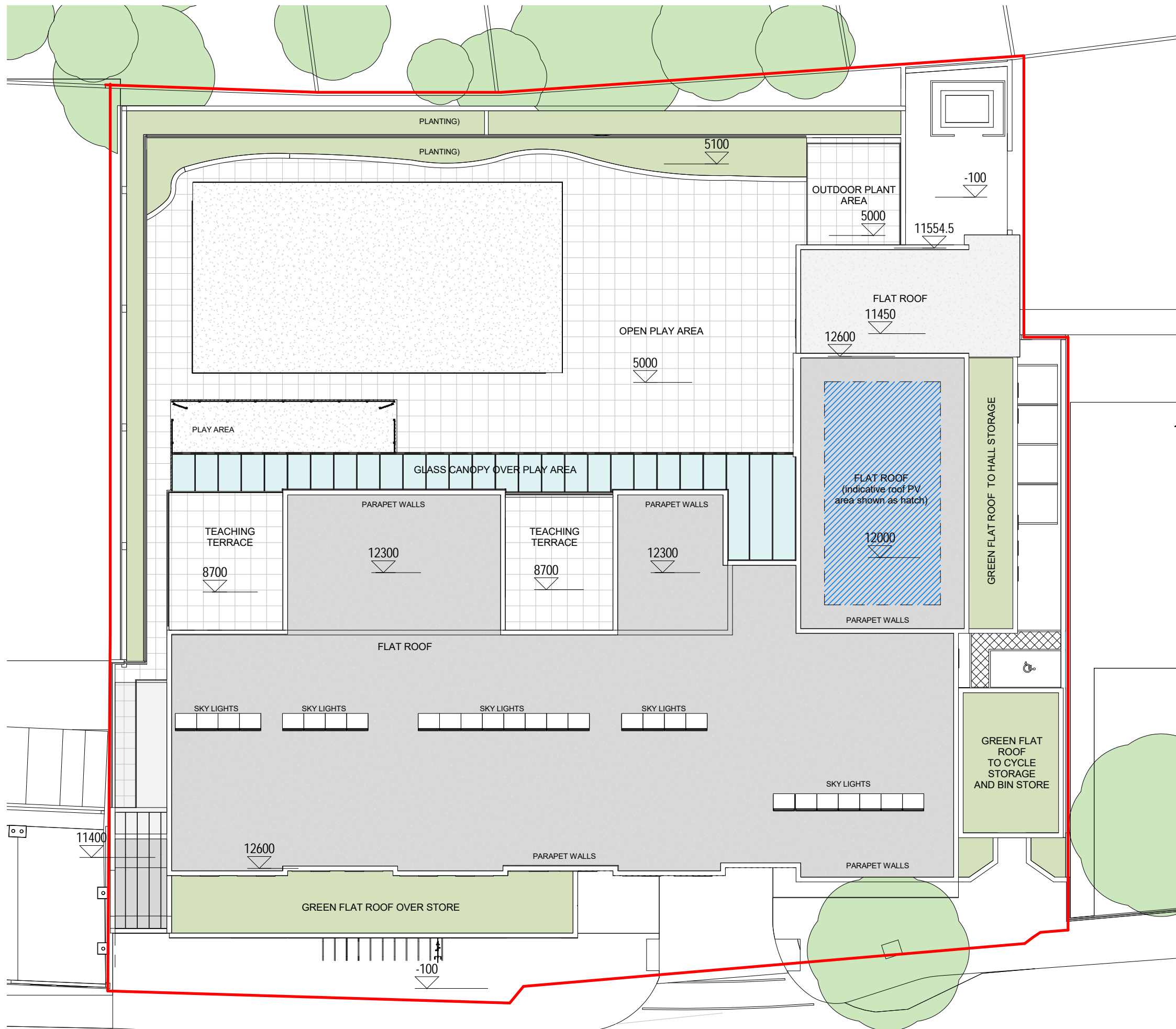




Client's Logo :



GROUND FLOOR PLAN  
SCALE 1:250

REV	DATE	DESCRIPTION	BY
4	16.10.17	Minor note amendments	JC
3	16.09.26	Minor amendments to package	JC
2	16.09.23	Amendments following comments	JC
1	16.09.13	Amendments following Planning advice	JC

IN CASE OF DOUBT OR DISCREPANCIES PLEASE REFER TO ARCHITECT FOR INSTRUCTIONS. DRAWING AND SUITABILITY NUMBERS IN ACCORDANCE WITH BS1192:2007. THIS DRAWING SHOULD NOT BE SCALED. THIS DRAWING IS COPYRIGHT.

<b>SUITABILITY NUMBER KEY:</b>		<b>DOCUMENTATION - SIGN-OFF</b>	
WIP	S0 - Work in Progress*	A	- Fit for construction
SHARED	S1 - Fit for co-ordination**	B	- Fit for construction, with comments
	S2 - Fit for information	C	- Comprehensive revisions needed
	S3 - Fit for internal review and comment	AB	- As Built
	S4 - Fit for construction approval	FC	- Final Construction
<b>DOCUMENTATION</b>		<b>ARCHIVE</b>	
D1	- Fit for costing	* For internal pre-issue usage only.	
D2	- Fit for tender	** For model file usage only.	
D3	- Fit for contractor design		
D4	- Fit for manufacturer/procurement		

**boyesrees architects**

4th Floor, Greyfriars House  
Greyfriars Road, Cardiff CF10 3AL  
Tel: 029 2055 8900 Fax: 029 2039 9592  
www.boyesrees.co.uk  
Registered office. As above Reg No. 295  
1683 (England & Wales)

PROJECT TITLE :  
Proposed LIDL store on Richmond Road  
Twickenham

DRAWING TITLE :  
Roof Plan

DRAWN BY : ADT	SCALE : 1 : 250 @ A3
JOB NO : 4862	DATE : 11/17/15

SUITABILITY : S2	REVISION : 4			
PROJECT ORIGIN : 4862 BRA 00	LEVEL : 03	TYPE : DR	DISCIP. : A	NUMBER : 010005



N:\04\_GD\_Projects\4862\_LIDL\_TWICKENHAM\40\_Architectural\41\_Design\00\_Revit\4862\_Proposed Lidl Richmond Planning Application.rvt  
17/10/2016 12:38:49