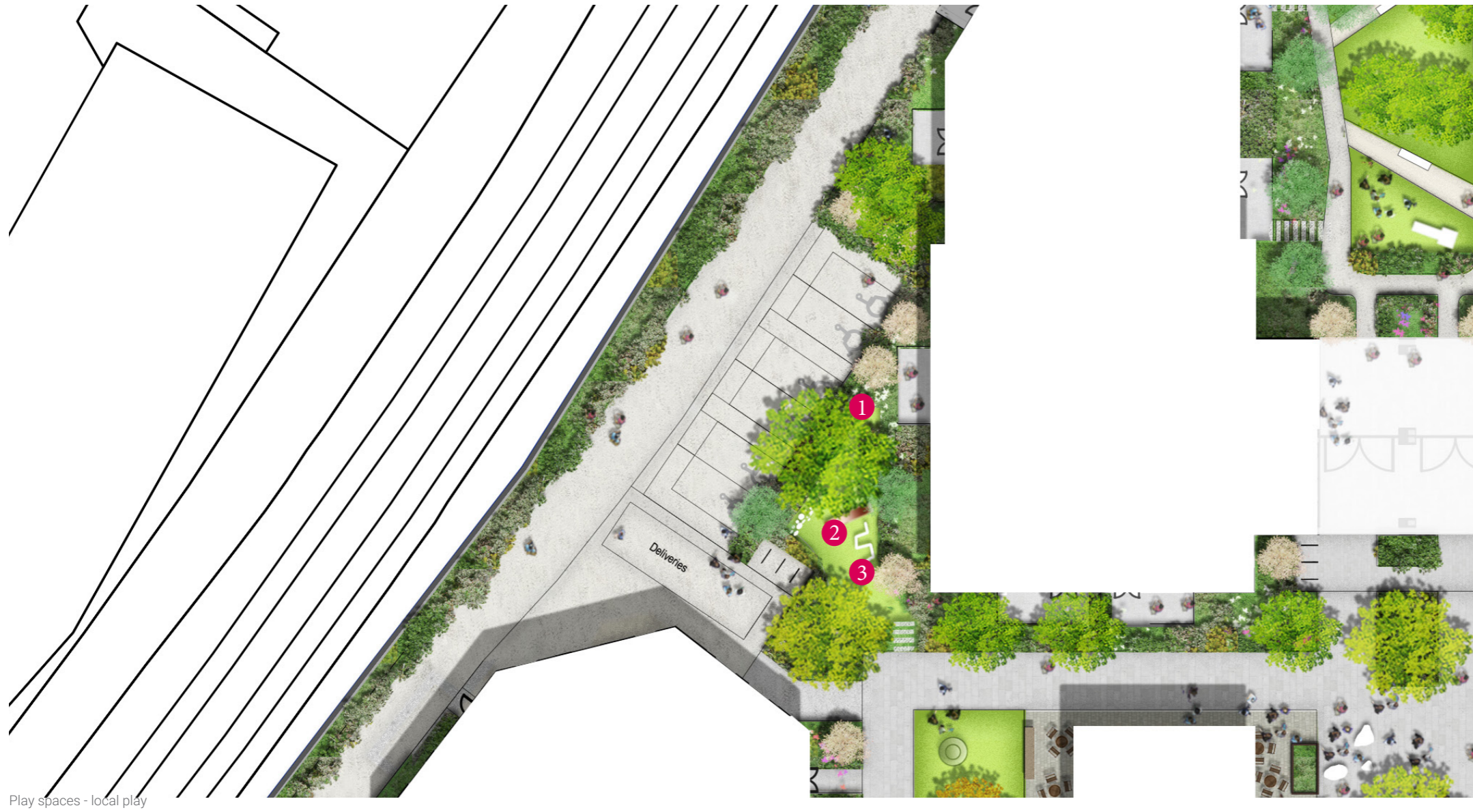


1.41 Play Strategy - Homezones/shared space - carpark 1 design



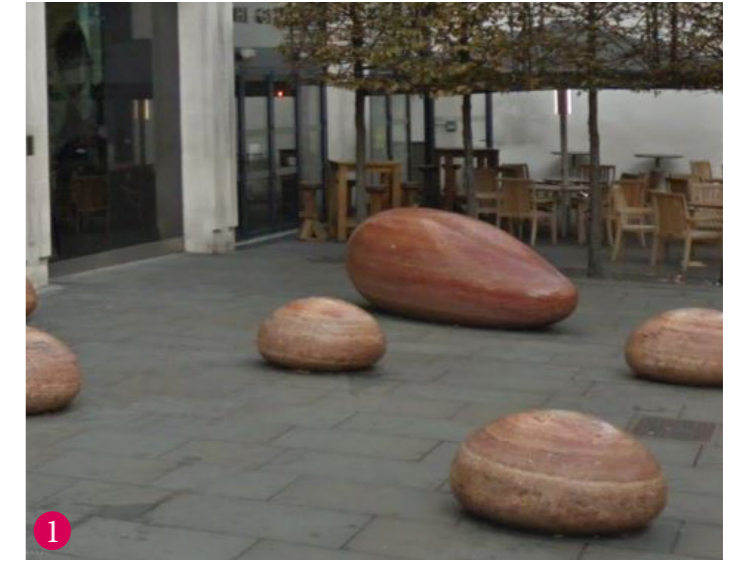
Play spaces - local play



1.42 Play Strategy - Public open space



Play spaces - doorstep and local play



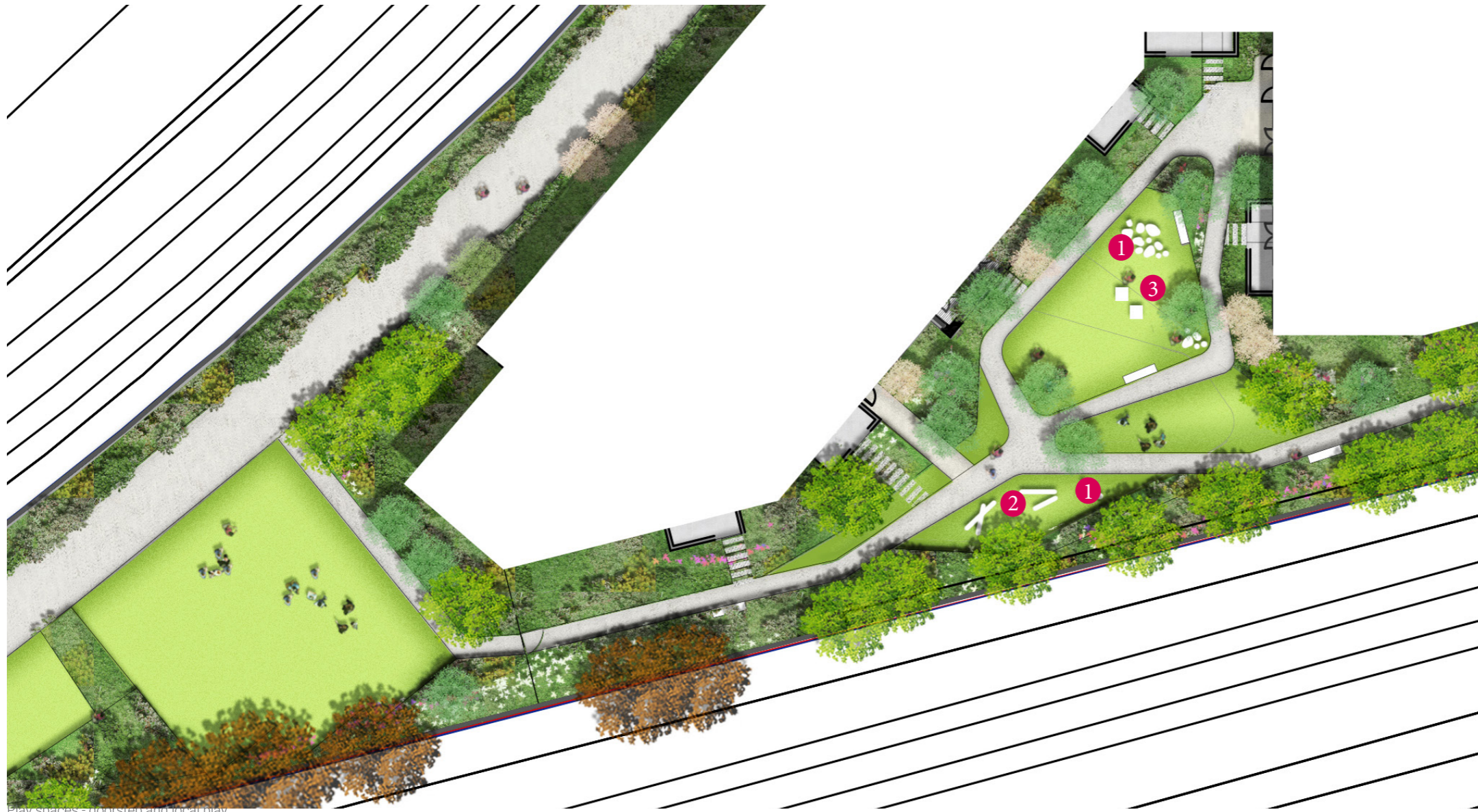
1.43 Play Strategy - Homezones/shared space - carpark 2 design



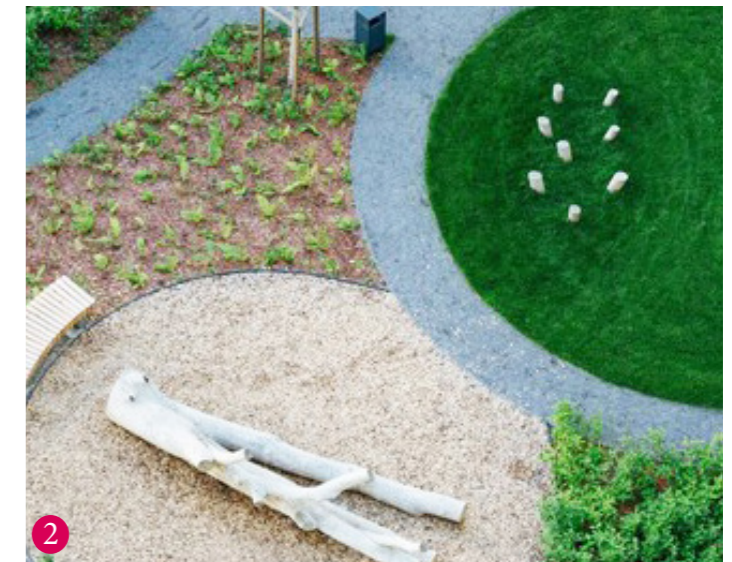
Play spaces - doorstep and local play



1.44 Play Strategy - Residential amenity courtyards - Block C design



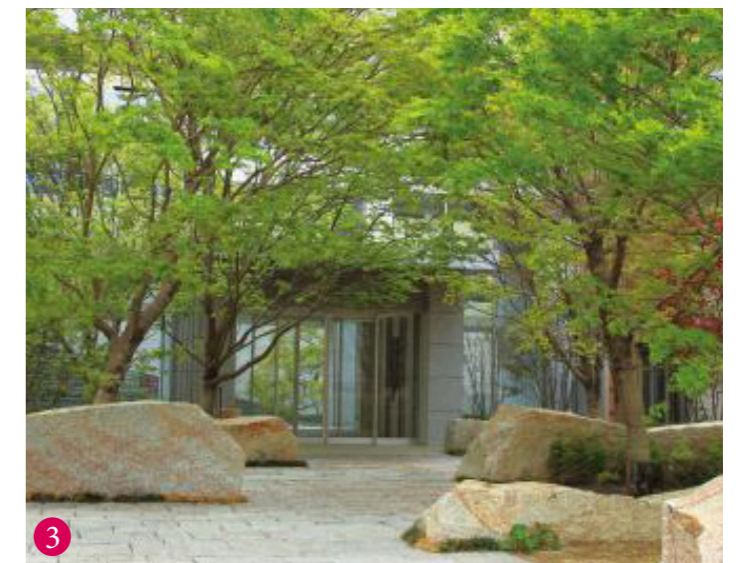
Play spaces - doorstep and local play



1.45 Play Strategy - Residential amenity courtyards - Block D design






Play spaces - odd step and local play





Assael

Assael Architecture Limited
 123 Upper Richmond Road
 London SW15 2TL

-  +44 (0)207 736 7744
-  info@assael.co.uk
-  www.assael.co.uk

Document Control Form

Project number	A3004
Project title	Manor Road
Document title	Landscape Addendum
Client	Avanton
Document status	Revision R2
Date of issue	June 2019
Prepared by	Lizzie Hennig, Admin
Checked by	Holly Barker, Architect

Assael Architecture Limited has prepared this document in accordance with the instructions of the Client under the agreed Terms of Appointment. This document is for the sole and specific use of the Client and Assael Architecture shall not be responsible for any use of the document or its contents for any purpose other than that for which it was prepared and provided. Should the Client require to pass copies of the document to other parties for information, the whole of the report should be so copied, but no professional liability or warranty shall be extended to other parties by Assael Architecture in this connection without the explicit written agreement thereto by Assael Architecture Limited.

© 2018 Assael Architecture Limited

Assael Architecture Limited owns the copyright of this design and document which must not be reproduced in whole or part without the written permission of Assael Architecture Limited.

Computer generated photo montages that may be contained in this document that have an image identification number containing the letters 'AVR' conform to our 'Accurate Visual Representation Methodology' as set out by the London View Management Framework. In the absence of the letters 'AVR' the image cannot be used as proof of visual impact but as an 'impression'.

Status	Revision	Date issued	Prepared by	Checked by
R1	For Planning	20/05/2019	LH	HB
R2	For Planning	18/06/2019	LH	HB