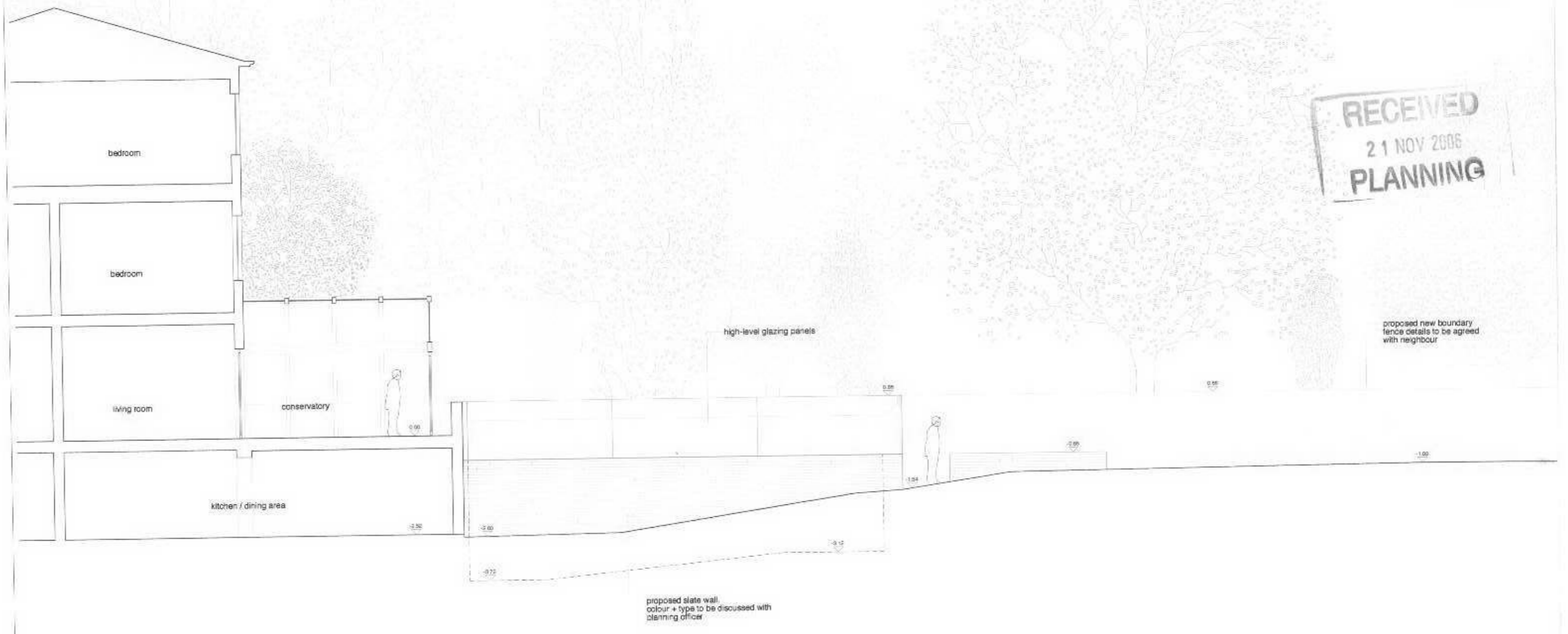


06/2008/HOT

RECEIVED
21 NOV 2006
PLANNING



proposed side elevation

project
65 Christchurch Road, SW14

drawing title
Proposed - Side Elevation

scale
1:100

drawing number
CC PRO 006_side elev.

rev
B

date
Jsh 2006

110 building court
Landscape Centre
London W14 7JF

T: 020 7278 0333
F: 020 7278 9433
E: info@clarke:desai.com

clarke:desai

Revisions

B - 15.11.06 (covering part 1000 to be retained and new glass brick conservatory / re-grading on foot)

A - 13.09.06 (0.00) to 0.1500 - boundary and ground

Clarke:desai Ltd. 2006

Clarke:desai Ltd. 2006