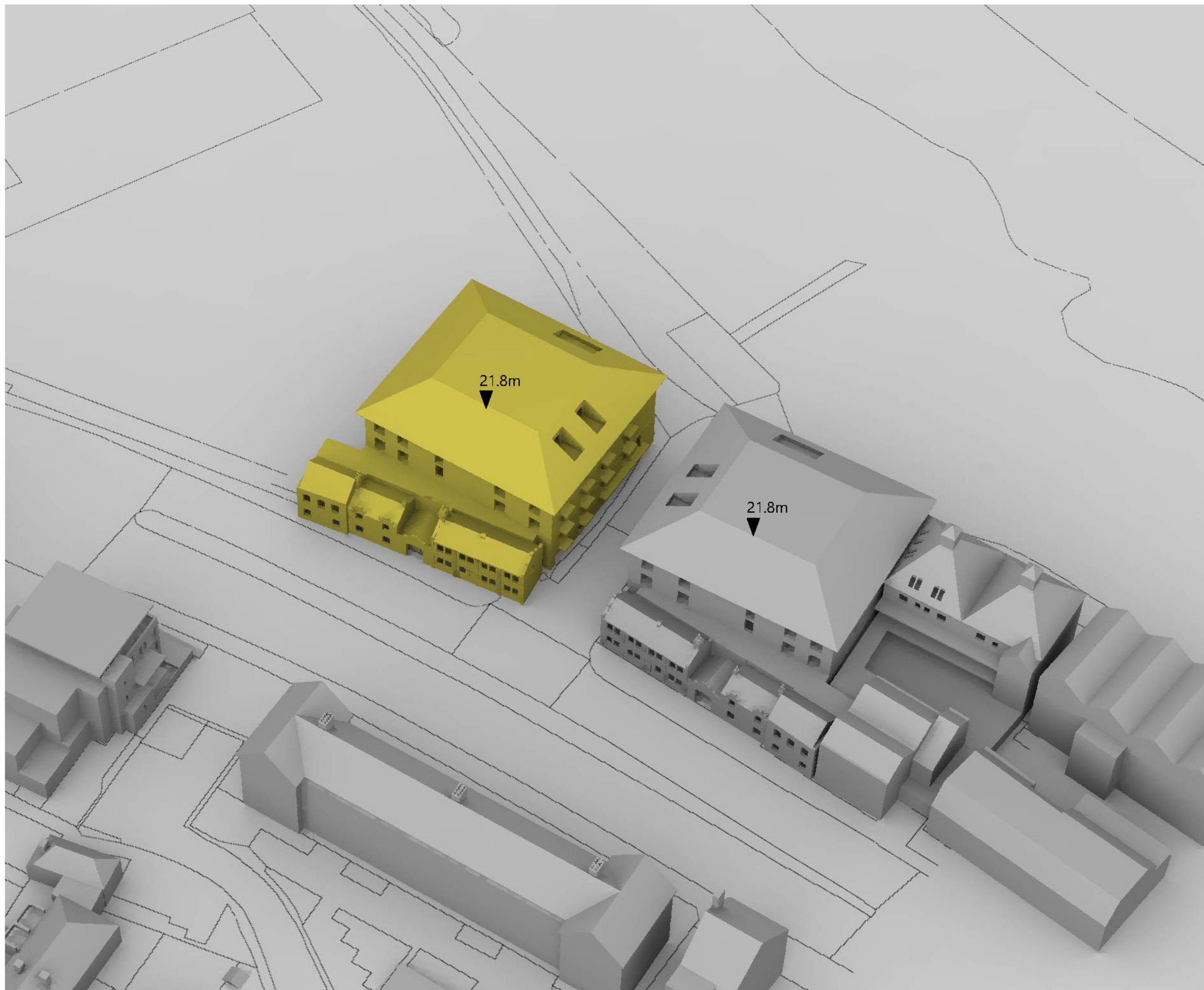


Sources of information

See appendix 1



Key:

 Mirrored

Notes:
All heights and dimensions are in AOD

Project The Stag Brewery
SW14 7ET
London

Title Mirrored baseline
3D View

Drawn DB Checked --

Date 02/05/2019 Project 2201

Rel no. 01 Prefix DS03 Page no. 02

Address	Room	Window	Room Use	Mirror	Proposed	Loss	Loss	Room Area	Mirror	Proposed	Loss	Loss	Mirror ADF	Proposed ADF	Loss	Loss	Mirror APSH	Proposed APSH	Total	Winter		
				VSC	VSC	%	NSC		NSC	%	Window	Total	Window	Total	%	Total	Winter	Total	Winter	Retained	Retained	
Boatrace House																						
Ground	R1	W01	Residential	31.8	31.8	0.1	0.2	367.3	339.1	339.1	0.0	0.0	0.5	0.5	0.0	0.0	78	20	78	20	1.0	1.0
	R1	W02		31.3	31.3	0.1	0.2						0.5	1.0			0.5	1.0	78	20	78	20
Ground	R4	W11	Residential	30.1	30.1	0.0	0.1	663.0	645.2	645.2	0.0	0.0	0.2	0.2	0.0	0.0	74	21	74	21	1.0	1.0
	R4	W12		30.1	30.1	0.0	0.0						0.2	0.2			77	21	77	21	1.0	1.0
	R4	W13		30.1	30.1	0.0	0.1						0.2	0.2			75	21	75	21	1.0	1.0
	R4	W14-L		29.6	29.6	0.0	0.1						0.0	0.0			76	20	76	20	1.0	1.0
		W14-U											0.0	0.0								
	R4	W15		30.5	30.5	0.0	0.0						0.0	0.0			78	22	78	22	1.0	1.0
	R4	W16		30.1	30.1	0.0	0.1						0.2	0.2			73	20	73	20	1.0	1.0
	R4	W17		30.2	30.2	0.0	0.1						0.2	0.2			76	20	76	20	1.0	1.0
	R4	W18		30.3	30.2	0.1	0.2						0.2	0.2			75	21	75	21	1.0	1.0
R4	W19	30.3	30.3	0.0	0.1	0.2	1.6	0.2	1.6	0.0	0.0	78	22	78	22	1.0	1.0					
First	R1	W01-L	LKD	0.8	0.8	0.0	0.0	500.2	455.5	455.5	0.0	0.0	0.0	0.0	0.0	0.0	N/A	N/A	N/A	N/A	N/A	N/A
		W01-U											0.1	0.1								
	R1	W02-L		1.2	1.2	0.0	0.0						0.0	0.0			N/A	N/A	N/A	N/A	N/A	N/A
		W02-U											0.1	0.1								
	R1	W03-L		33.7	33.6	0.0	0.1						0.0	0.0			82	24	82	24	1.0	1.0
		W03-U											0.4	0.4								
R1	W04-L	33.4	33.4	0.0	0.1	0.0	0.0	81	23	81	23	1.0	1.0									
	W04-U					0.4	0.4															
R1	W05-L	33.2	33.2	0.0	0.2	0.0	0.0	81	23	81	23	1.0	1.0									
	W05-U					0.4	1.5	0.4	1.5	0.0	0.0											
First	R2	W06-L	Bedroom	32.1	32.0	0.0	0.1	165.8	110.9	110.9	0.0	0.0	0.0	0.0	0.0	0.0	72	22	72	22	1.0	1.0
	W06-U						0.6						0.6	0.6			0.6					
First	R3	W07-L	Bedroom	32.4	32.3	0.0	0.1	158.8	111.9	111.9	0.0	0.0	0.0	0.0	0.0	0.0	79	23	79	23	1.0	1.0
	W07-U						0.6						0.6	0.6			0.6					
First	R4	W08	Bedroom	31.6	31.6	0.0	0.1	145.3	144.3	144.3	0.0	0.0	0.8	0.8	0.0	0.0	78	25	78	25	1.0	1.0
	R4	W09		31.6	31.6	0.0	0.0						0.8	1.6			0.8	1.6	81	25	81	25
First	R5	W10	LKD	31.6	31.6	0.0	0.1	227.2	225.9	225.9	0.0	0.0	0.6	0.6	0.0	0.0	78	24	78	24	1.0	1.0
	R5	W11		31.6	31.6	0.0	0.1						0.6	0.6			79	23	79	23	1.0	1.0
	R5	W12		31.6	31.6	0.0	0.1						0.5	0.5			77	24	77	24	1.0	1.0
	R5	W13		31.7	31.7	0.0	0.0						0.5	2.2			0.5	2.2	0.0	0.0	80	24
First	R6	W14	Bedroom	31.7	31.7	0.0	0.1	197.4	176.4	165.2	11.3	6.4	0.5	0.5	0.1	1.7	79	25	79	25	1.0	1.0
	R6	W15		31.8	31.8	0.0	0.0						0.5	0.5			81	25	81	25	1.0	1.0
	R6	W16		27.5	23.8	3.7	13.5						0.6	0.6			N/A	N/A	N/A	N/A	N/A	N/A
	R6	W17		10.4	7.5	2.9	27.9						0.1	1.6			0.1	1.6	0.1	4.4	10	0
First	R7	W18-L	Bedroom	19.1	15.7	3.4	18.0	164.8	121.3	100.2	21.1	17.4	0.1	0.1	0.1	13.9	37	13	33	12	0.9	0.9
	W18-U						1.0						1.0	0.8			0.9	0.1	13.9			

Address	Room	Window	Room Use	Mirror	Proposed	Loss	Loss	Room Area	Mirror	Proposed	Loss	Loss	Mirror ADF		Proposed ADF		Loss	Loss	Mirror APSH		Proposed APSH		Total	Winter				
				VSC	VSC	%	%		NSC	NSC	%	%	Window	Total	Window	Total	%	%	Total	Winter	Total	Winter	Retained	Retained				
First	R8	W19-L	LKD	16.2	14.3	1.9	11.6	449.7	58.6	46.1	12.6	21.4	0.0	0.0	0.4	0.4	0.3	0.4	0.0	9.7	29	11	25	9	0.9	0.8		
		W19-U																										
First	R9	W20-L	Bedroom	15.4	14.8	0.6	3.8	228.5	69.0	90.9	-21.9	-31.7	0.1	0.1	0.6	0.7	0.6	0.6	0.0	4.3	25	9	22	8	0.9	0.9		
First	R10	W21-L	Bedroom	17.1	17.4	-0.3	-1.8	184.9	72.7	86.6	-13.9	-19.1	0.1	0.1	0.8	0.8	0.8	0.8	0.0	0.5	25	8	23	8	0.9	1.0		
First	R11	W22-L	LKD	21.9	21.3	0.6	2.7	367.4	233.4	227.1	6.3	2.7	0.0	0.0	0.3	0.3	0.8	1.3	0.8	1.3	0.0	1.4	22	6	19	7	0.9	1.2
	W23-L	38.9		38.5	0.4	1.1	0.1						0.1	N/A	N/A	N/A							N/A	N/A	N/A			
Second	R1	W01	Bedroom	29.8	29.8	0.0	0.0	253.6	251.8	251.8	0.0	0.0	1.0	1.0	0.1	0.1	1.0	2.0	1.0	2.0	0.0	0.0	N/A	N/A	N/A	N/A	N/A	N/A
	W02-L	33.6		33.6	0.0	0.1	0.1						0.1	84	28	84							28	1.0	1.0			
Second	R2	W03-L	Bedroom	34.2	34.1	0.0	0.1	242.1	236.0	236.0	0.0	0.0	0.1	0.1	1.1	1.2	1.1	1.2	0.0	0.0	84	28	84	28	1.0	1.0		
Second	R4	W05-L	Bedroom	34.4	34.2	0.2	0.5	134.9	132.8	132.8	0.0	0.0	0.2	0.2	1.7	1.9	1.7	1.9	0.0	0.2	86	29	85	28	1.0	1.0		
Second	R5	W06-L	LKD	34.7	34.4	0.4	1.0	348.2	336.7	336.2	0.5	0.1	0.1	0.1	0.9	0.9	0.6	1.6	0.5	1.5	0.1	6.5	86	29	82	27	1.0	0.9
	W07-L	24.3		19.4	4.9	20.3	0.1						0.1	40	15	35							13	0.9	0.9			
Second	R6	W08-L	Bedroom	22.3	18.0	4.3	19.3	233.4	70.3	46.3	24.0	34.1	0.1	0.1	0.7	0.8	0.6	0.7	0.1	14.0	33	11	28	9	0.8	0.8		
Second	R7	W09-L	Bedroom	21.3	17.7	3.6	17.0	185.3	87.9	80.1	7.8	8.9	0.1	0.1	0.8	0.9	0.7	0.8	0.1	12.5	30	9	24	7	0.8	0.8		
Second	R8	W10-L	Bedroom	22.5	19.8	2.7	12.0	167.4	84.8	90.0	-5.2	-6.1	0.1	0.1	0.9	1.0	0.8	0.9	0.1	9.1	29	8	24	8	0.8	1.0		
Second	R9	W11-L	LKD	38.5	38.1	0.4	1.0	367.5	300.2	300.2	0.0	0.0	0.1	0.1	0.8	0.8	0.8	1.7	0.8	1.7	0.0	0.8	N/A	N/A	N/A	N/A	N/A	N/A
	W11-U																											
		W12-L		38.8	38.3	0.4	1.1						0.1	0.1	0.8	1.7	0.8	1.7	0.0	0.8	N/A	N/A	N/A	N/A	N/A	N/A		
Third	R1	W01	Bedroom	26.4	26.4	0.0	0.0	257.0	254.8	254.8	0.0	0.0	0.8	0.8	0.1	0.1	0.9	1.8	0.9	1.8	0.0	0.0	N/A	N/A	N/A	N/A	N/A	N/A
	W02-L	32.4		32.4	0.0	0.1	0.1						0.1	79	30	79							30	1.0	1.0			

Address	Room	Window	Room Use	Mirror	Proposed	Loss	Loss	Room Area	Mirror	Proposed	Loss	Loss	Mirror ADF		Proposed ADF		Loss	Loss	Mirror APSH		Proposed APSH		Total	Winter
				VSC	VSC	%	%		NSC	NSC	%	%	Window	Total	Window	Total	%	%	Total	Winter	Total	Winter	Retained	Retained
Third	R2	W03-L W03-U	Bedroom	32.1	32.1	0.0	0.1	221.8	218.4	218.4	0.0	0.0	0.1 1.0	1.1	0.1 1.0	1.1	0.0	0.0	77	30	77	30	1.0	1.0
Third	R4	W05-L W05-U	Bedroom	31.6	31.5	0.1	0.3	157.6	138.5	138.5	0.0	0.0	0.1 1.2	1.4	0.1 1.2	1.4	0.0	0.1	76	29	76	29	1.0	1.0
Third	R5	W06-L W06-U	LKD	31.6	31.4	0.2	0.7	347.6	336.5	335.0	1.6	0.5	0.1 0.7		0.1 0.7				77	29	75	27	1.0	0.9
	R5	W07-L W07-U		27.6	22.7	4.9	17.8						0.1 0.7	1.6	0.1 0.6	1.5	0.1	6.6	35	13	29	11	0.8	0.8
Third	R6	W08-L W08-U	Bedroom	26.4	21.3	5.1	19.2	186.0	135.3	81.7	53.6	39.6	0.1 1.0	1.1	0.1 0.9	1.0	0.2	14.7	32	10	26	10	0.8	1.0
Third	R7	W09-L W09-U	Bedroom	25.0	20.2	4.8	19.2	178.1	148.6	100.4	48.2	32.4	0.1 0.9	1.0	0.1 0.8	0.9	0.2	14.8	31	10	23	8	0.7	0.8
Third	R8	W10-L W10-U	Bedroom	25.6	21.5	4.1	16.0	171.7	123.2	106.0	17.2	14.0	0.1 1.0	1.1	0.1 0.9	1.0	0.1	12.6	30	9	22	6	0.7	0.7
Third	R9	W11-L W11-U	LKD	33.7	33.3	0.3	1.0	367.2	299.6	299.6	0.0	0.0	0.1 0.7		0.1 0.6				N/A	N/A	N/A	N/A	N/A	N/A
	R9	W12-L W12-U		33.5	33.2	0.3	0.9						0.1 0.6	1.4	0.1 0.6	1.4	0.0	0.6	N/A	N/A	N/A	N/A	N/A	N/A
Fourth	R1	W01-L W01-U	Bedroom	24.6	22.1	2.6	10.4	311.0	291.8	205.5	86.3	29.6	0.1 0.8		0.1 0.7	0.8	0.1	7.0	26	2	21	1	0.8	0.5
Fourth	R2	W02-L W02-U	Bedroom	24.2	21.4	2.8	11.7	214.5	195.4	195.2	0.2	0.1	0.1 1.1	1.2	0.1 1.0	1.1	0.1	7.6	27	1	23	0	0.9	0.0
Fourth	R3	W03-L W03-U	LKD	38.8	38.8	0.0	0.0	730.8	713.9	713.9	0.0	0.0	0.1 1.6	1.7	0.1 1.6	1.7	0.0	0.1	N/A	N/A	N/A	N/A	N/A	N/A

UK and Ireland Office Locations

