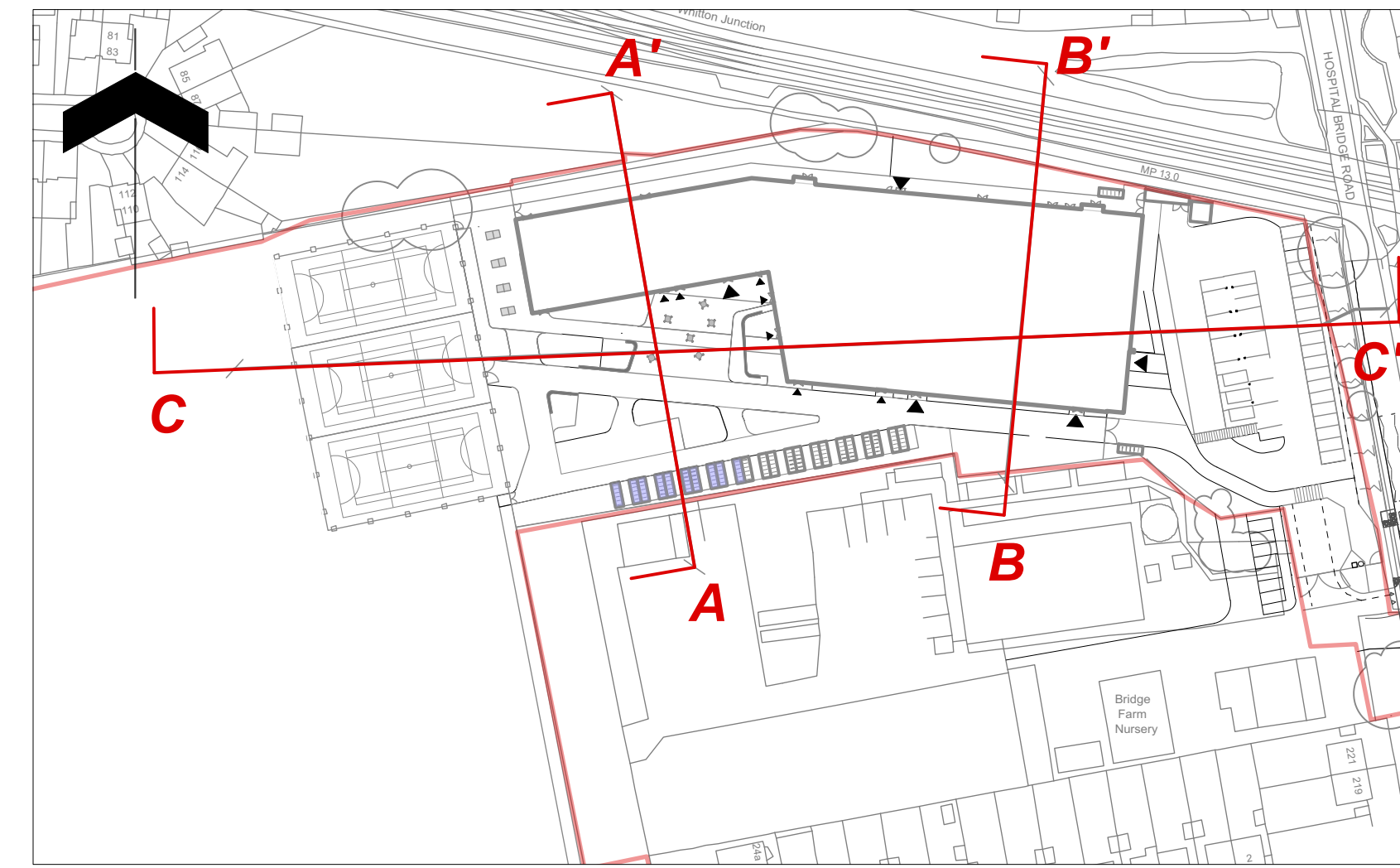
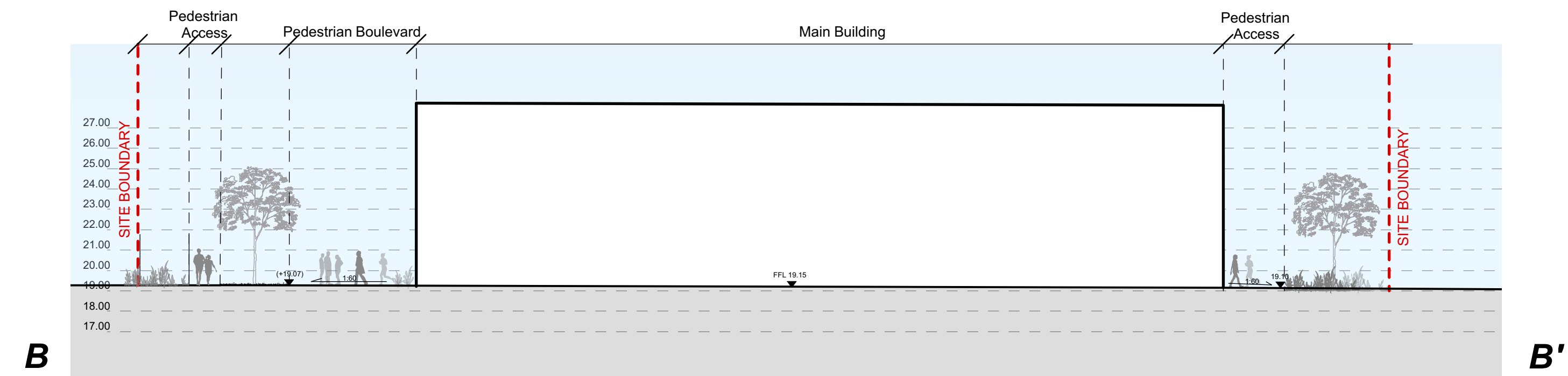


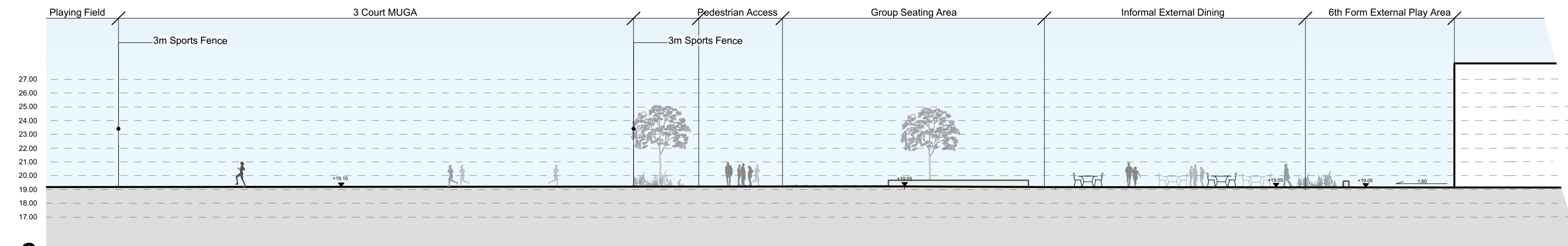
A **A'**



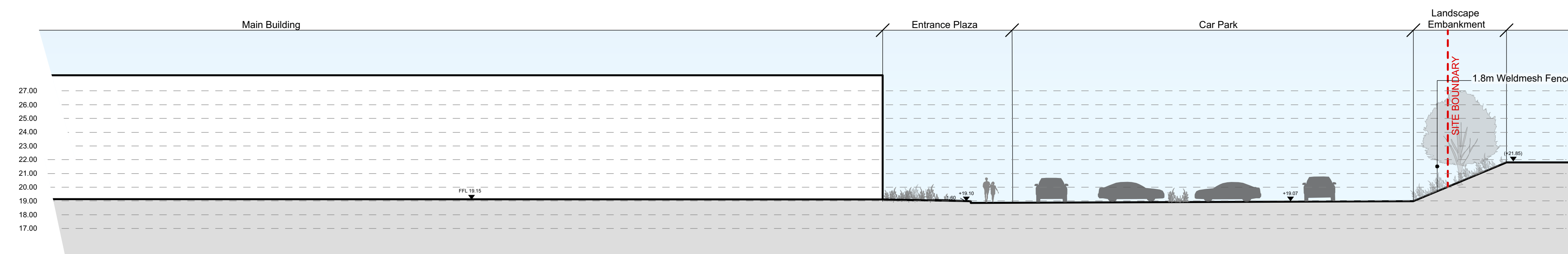
Site Location Plan



B **B'**



C **C'**



C'

Notes
 1. Drawing not to be scaled for construction or setting out purposes.
 2. To be read in conjunction with Project Risk Register REF: XXX
 3. To be read in conjunction with all other Landscape Architect's drawings

KEY

ID	RISK	MITIGATION	Date Mitigated
RESIDUAL PROJECT RISKS			

DATE	SUITABILITY	REV	DESCRIPTION OF REVISION	DRAWN BY	APPROVED BY
07.02.19	S2	P02	Red Line Amended	HT	LA

REVISIONS

SUITABILITY
S2 - For Planning

ares
 LANDSCAPE ARCHITECTS

Ares Landscape Architects LTD
 Gilecrusher
 51 Eyre Lane
 Sheffield
 S1 4RB

t: 0114 276 2000
 e: hello@ares.eu.com
 w: ares.eu.com

CLIENT:
Bowmer and Kirkland

PROJECT TITLE:
Turing House School

DRAWING TITLE:
Site Sections

DRAWING SCALE: 1:200
 DRAWN BY: EC
 DRAWN DATE: 12.04.2018

PAPER SIZE: A1
 APPROVED BY: LA

DRAWING NUMBER: EFATH-ALA-00-XX-DR-L-0008
 SUITABILITY: S2
 REVISION: P02