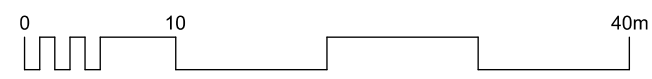
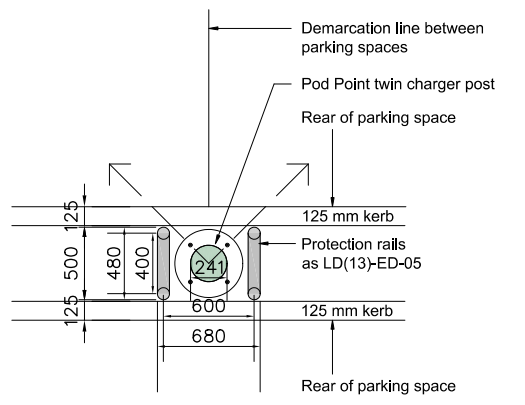
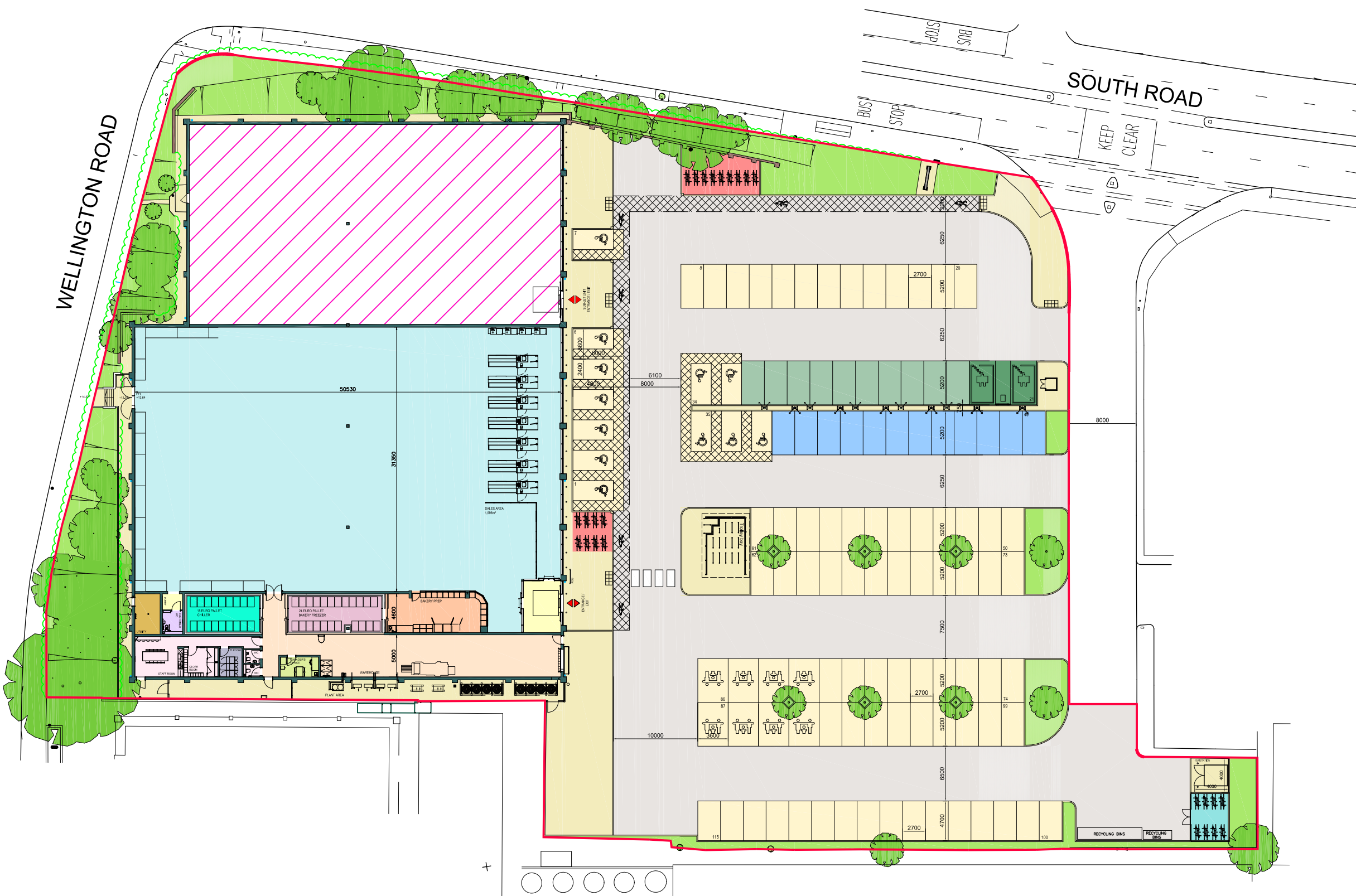


# AREA SCHEDULE

	Site area	0.9406	ha
	Sales area	1,596	sq m
<b>WAREHOUSE</b>			
	Warehouse	182	
	Bakery warehouse	46	
	Additional chillers	37	
	<b>Total Warehouse</b>	<b>265</b>	
<b>ANCILLARY AREA</b>			
	Bakery prep	57	
	Manager's office / cash office	11	
	Welfare	60	
	IT room	9	
	Customer wc	7	
	Utility	14	
	Circulation	32	
	Internal partitions	45	
	<b>Total Ancillary</b>	<b>235</b>	
	<b>Total Lidl GIA</b>	<b>2,096</b>	<b>sq m</b>
	<b>Lidl GEA</b>	<b>2,152</b>	<b>sq m</b>
	Sublet unit GIA	1,043	sq m
	Sublet unit GEA	1,081	sq m
	<b>TOTAL GIA</b>	<b>3,139</b>	<b>sq m</b>
	<b>TOTAL GEA</b>	<b>3,233</b>	<b>sq m</b>

<b>PARKING</b>			
Standard		71	
Disabled		12	
Parent & child		8	
EVC rapid charging point		2	
EVC active		10	
EVC passive		12	
<b>TOTAL</b>		<b>115</b>	<b>spaces</b>
Short stay cycle parking		34	
Long stay cycle parking		16	



WORKING WITH

**KLH architects**

The Old Steelyard, Poplar Lane  
 Sproughton, Ipswich, IP8 3HL  
 t.01473 689532  
 klh@klharchitects.com  
 www.klharchitects.com

<b>&amp; POOLE chartered architects</b>		<b>PATTLE</b>	
Project: LIDL, SOUTH ROAD, TWICKENHAM	Date: JUL 2018	Scale: 1:500 @ A3	
Drawing: SITE PLAN AS PROPOSED	3900	101	Z