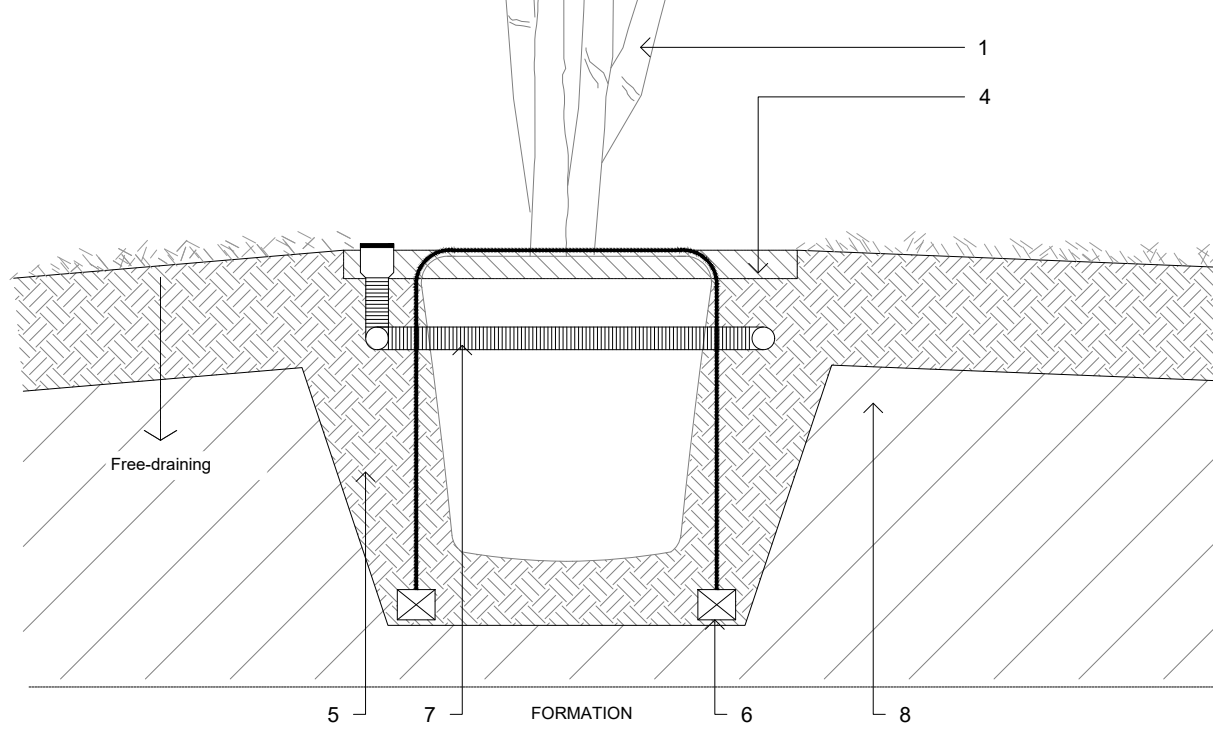
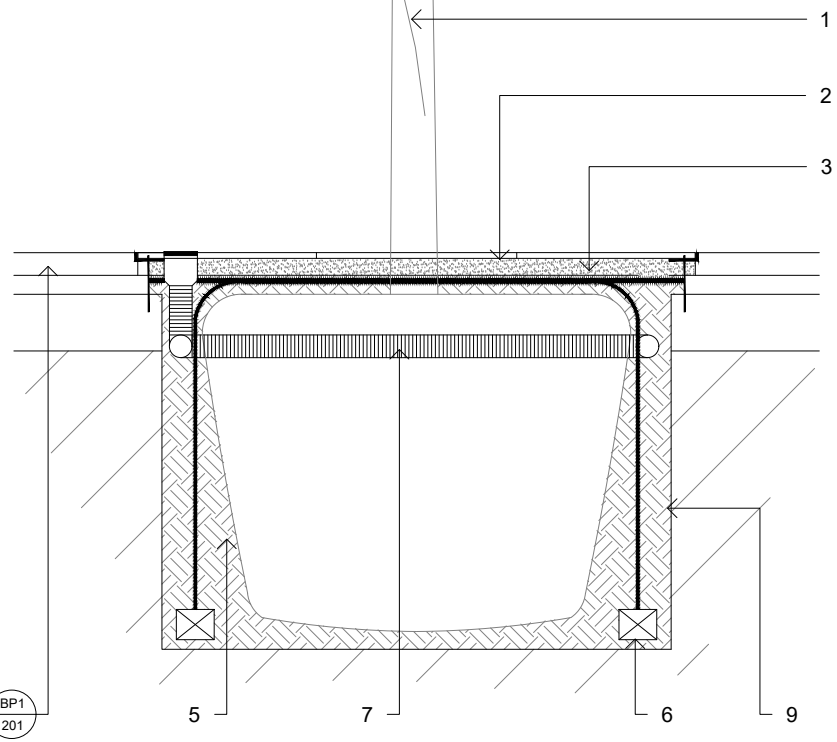


- Notes**
- Do not scale from this drawing, use only written dimensions.
  - All dimensions are drawn in mm unless otherwise noted.
  - All dimensions must be checked on site and any discrepancies verified with landscape architect.
  - Landscape drawing only - to be read in conjunction with architect and engineers drawings.
  - All materials/items used to be as specified or alternatives to be approved by landscape architect.
1. For locations refer to drawing 10743-LD-PLN-400.
  2. Steel tree grill with frame - as 1475 x 1475mm Portman Tree Grille by Furnitubes or similar.
  3. 8mm limestone chippings mulch, 40mm depth layer
  4. Melcourt 'mini mulch' pine mulch. Finished level of mulch to be 70mm below adjacent lawn.
  5. Imported topsoil.
  6. Rootball guying kit: Platypus RF2RDMP or similar, to installation manual.
  7. Mona Link irrigation system by green-tech using 4nr mona link 24 tanks joined with unperforated jointing pipe, complete with airpipe, level indicator and vent cap.
  8. 350mm ripped subgrade
  9. Line haunches with 600mm depth rootbarrier: Rootblock by Geosynthetics Ltd. or similar installed to manufacturers guidelines.
- All tree planting to be undertaken in accordance with BS5387:2012 'Trees in Relation to Design, Demolition and Construction' and BS8545 'Trees from nursery to independence in the landscape'.
  - All semi-mature trees to be root prepared and transplanted to BS4043 'Recommendations for transplanting root-balled trees'.
  - All standard trees to be secured with 2nr. stakes of 50mm dia softwood, peeled chestnut, larch or oak, straight and free from projections and large or edge knots and with pointed lower end with nails to BS1202.
  - Backfill with ameliorant (1m3 per 10m3 topsoil) and fertilizer



**A** Piazza Tree Pit Detail  
1:20 @ A3

**B** Multi-stemmed Tree in grass/ planting  
1:20 @ A3