

100  
0 10  
Millimetres

- Material Key:**
- ① Perforated Aluminium Panels - Silver
  - ② Polyester powder coated aluminium framed double glazed windows (Anthracite Grey) with opening lights
  - ③ Polyester powder coated aluminium framed curtain walling - Anthracite Grey
  - ④ Polycarbonate Plant Screen - Pearl White
  - ⑤ Polyester powder coated aluminium framed glass door - Anthracite Grey
  - ⑥ Polyester powder coated aluminium solid door - Anthracite Grey
  - ⑦ Steel framed louvre door - Anthracite Grey
  - ⑧ Aluminium framed revolving glass door - Anthracite Grey
  - ⑨ Steel framed solid sliding door - Anthracite Grey
  - ⑩ Roller Shutter Door - Anthracite Grey
  - ⑪ Louvered metal gate - Anthracite Grey

DO NOT SCALE

**SAFETY, HEALTH AND ENVIRONMENTAL INFORMATION**

In addition to the hazards/risks normally associated with the types of work detailed on this drawing, note the following:

**CONSTRUCTION**

- Demolition works associated with removal of existing building walls and construction of new internal walls, risk of collapse.
- Working at height for works at high internal levels.
- Working with plant & machinery, risk of collision or electrocution

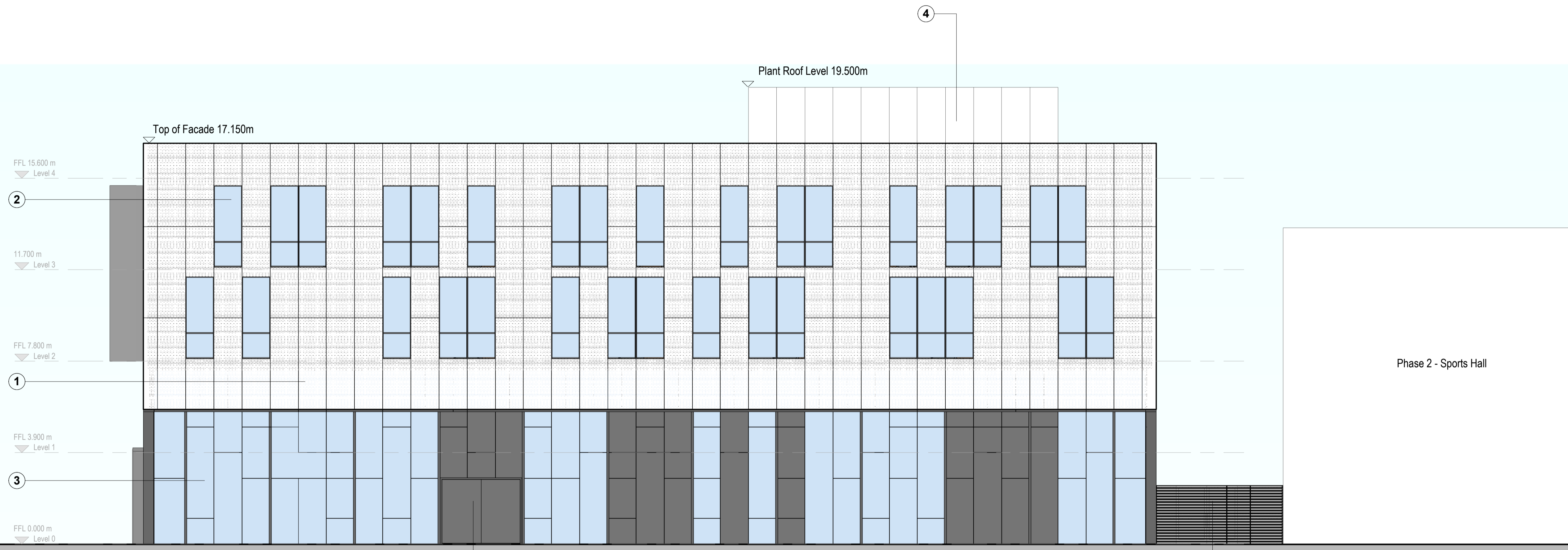
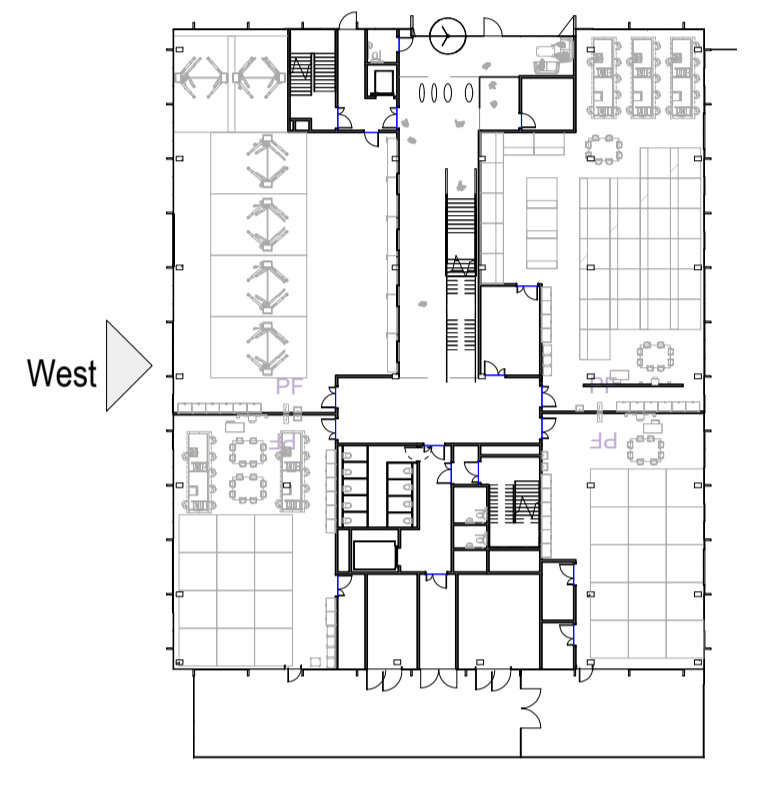
**MAINTENANCE/CLEANING**

- Working at height for installation of high level construction and proposed finishes.
- Working in confined spaces or voids, for servicing of any mechanical/electrical services

**DECOMMISSIONING/DEMOLITION**

- Demolition works associated with removal of existing building walls and construction of new internal walls, risk of collapse.
- Working at height for works at high levels.
- Risk associated with the stripping of existing services.

It is assumed that all works will be carried out by a competent contractor working, where appropriate, to an approved method statement



1 West Elevation  
SCALE 1:100

Rev.	Date	Description	By	Chk'd	App'd

Drawing Suitability: **Planning** Status: **S2**

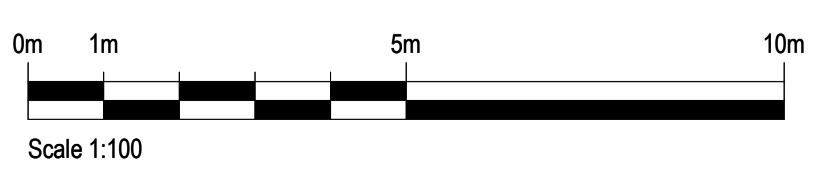
**SNC-LAVALIN**  
**ATKINS**  
Member of the SNC-Lavalin Group

Atkins  
11 Bressenden Place  
Westminster  
London  
SW1E 5BY  
Tel: +44 (0) 20 7121 2000  
www.atkinsglobal.com  
© SNC-Lavalin (2019)

Client:  
Richmond upon Thames College  
College  
Egerton Road  
Twickenham  
TW2 7SL

Project Title:  
Richmond Upon Thames College STEM Building

Drawing Title:  
Proposed West Elevation



Scale	Designed	Drawn	Checked	Authorised
As indicated	TL	HR	TL	
Original Size	Date	Date	Date	Date
A1	21.06.19	09.07.19	12.07.19	
Drawing Number	Revision			
5186066-ATK-V1-ZZ-DR-A-1403				

Atkins Project Number: 5186066