

Quantity	Type / Species	Specification	Density/Percentage
6	Betula utilis jacquemontii	350-400cm height, RB, 4x, multi-stem-bushy, 3 stems min	As shown
12	Sorbus acuparia	18-20 cm girth, 350-400cm height, RB	As shown
3	Liquidambar styraciflua	20-25 cm girth, 450-500cm height, RB	As shown
5	Prunus avium	18-20 cm girth, 450-500cm height, RB	As shown
6	Acer campestre	18-20 cm girth, 450-500cm height, RB	As shown
% of area Groundcover Planting Matrix 845m²			
10	Ajuga reptans	11 pot	10m²
5	Dryopteris affinis	31 pot	5m²
5	Athyrium filix-femina	31 pot	5m²
10	Galium odoratum	11 pot	8m²
30	Melica nutans	11 pot	8m²
30	Luzula sylvatica	11 pot	8m²
5	Gillenia trifoliata	11 pot	5m²
5	Iris foetidissima	21 pot	5m²
100	EW1F - Wild flowers for woodland	Seed sourced locally / uk provenance	1.5g/m²
Quantity Bulbs			
600	Narcissus pseudonarcissus	Grade 8/9	groups of 15 interplanted amongst ground cover
1200	Hyacinthoides non-scripta	Grade 8/9	groups of 30 interplanted amongst ground cover

EW1F - Wild flowers for woodland		
Total Area = 845m²		
Wildflower		
%	Latin name	Common name
15.0	Alliaria petiolata	Garlic Mustard
4.0	Allium ursinum	Ramsons
8.0	Betonica officinalis	Betony
5.0	Chaerophyllum temulum	Rough Chervil
1.0	Digitalis purpurea	Foxglove
10.0	Filipendula ulmaria	Meadowsweet
5.0	Galium album	Hedge Bedstraw
5.0	Geum rivale	Water Avens
1.0	Geum urbanum	Wood Avens
14.0	Hyacinthoides non-scripta	Bluebell
4.0	Hypericum hirsutum	Hairy St John's-wort
1.0	Primula vulgaris	Primrose
7.5	Prunella vulgaris	Selfheal
13.5	Nicotiana glauca	Red Campion
1.0	Silene flos-cuculi	Ragged Robin
5.0	Teucrium scorodonia	Wood Sage
100.0		

GENERAL
All supply, planting and other landscape works to be in accordance with relevant British Standards and Codes of Practice. Works to be undertaken by a competent and accredited landscape contractor with 12months Defects Liability/ in contract maintenance. Health and vigour of all planting stock to be maintained throughout with regular watering, pruning etc. Failed planting stock to be replaced as required.

PLANTING METHODOLOGY
Soil
Soil to be free of pests, disease, fungus and foreign matter.
Do not use topsoil contaminated with subsoil, rubbish or other materials that are corrosive, explosive, flammable, hazardous to human or animal life or detrimental to healthy plant growth.
The Contractor shall appoint a suitably qualified and approved, independent Soil Scientist to undertake the sampling and testing of the soil materials considered for importation.
An approved Soil Scientist is: Tim O'Hare Associates LLP, Howbery Park, Wallingford, Oxon, OX10 8BA, Tel: 01491 822653, www.loha.co.uk
Subsoil to be in accordance with BS 3882 'Specification for topsoil'.
For trees planted in hard landscape a load bearing growing medium will be necessary. This will be Urban tree planting medium, Grade: 0.6-2 mm.
Green compost for soil amelioration to be incorporated into soil for tree and shrub planting to be in accordance with BS PAS 100:2011 or current revision and sourced from a PAS 100 compliant facility.
Fertilizer to be incorporated into soil for tree and shrub planting: Scotts Enmag CRF (11%N:22%P2O5:9%K2O:6%MgO).
Prepare undisturbed topsoil in accordance with BS 4428 'Code of Practice for general landscape operations': Break up hard ground thoroughly, remove visible roots and large stones with a diameter greater than 50 mm, dig areas covered with turf over to full depth of topsoil and treat weeds at appropriate times with a suitable translocated non-residual herbicide.
Prepare subsoil by excavating/placing fill to the required profiles, loosening thoroughly when ground conditions are reasonably dry to a depth of 450mm and removing stones larger than 50mm, arisings, contaminants, debris and builders' rubble.
Spread topsoil in layers of 150 mm maximum depth and gently firm each layer before spreading the next.
After spreading topsoil, when weather and ground conditions are suitably dry and non-plastic, the soil profile shall be ripped at 300mm centres to a minimum depth of 300mm (grass areas) or 600mm (shrub beds, hedges) to decompact the soils and key in the topsoil and subsoil layers. Any large, compacted lumps of soil shall be broken down by further appropriate cultivation (in accordance with BS 4428) to produce a fine tith suitable for planting (<30mm), turfing and seeding (<10mm). Cultivations shall ensure that the topsoil is fully aerated.
In order to avoid physical degradation to the soil during all phases of soil handling (e.g. spreading, cultivation, amelioration, planting, turfing and seeding), soil handling operations shall be carried out when soil is non-plastic (friable) in consistency (i.e. at least 5% below the soil's lower plastic limit). Soil shall not be unnecessarily compacted by trampling or trafficking by site machinery or handled when frozen or during and after heavy rainfall.

Timing
Deciduous trees and shrubs: Late October to late March. Field-grown trees and shrubs planted out of season to be spring-ringed at nursery.
Conifers and evergreens: September/ October or April/ May.
Herbaceous plants: September/ October or March/ April.
Container grown plants: At any time if ground and weather conditions are favourable. Provide watering and weed control as necessary.
Dried bulbs, corms and tubers: September/ October.

Standard
All planting to be carried out in accordance with BS 4428 and during suitable weather conditions. Do not use mechanical tools within 100 mm of tree and plant stems. Water as necessary to ensure establishment and continued thriving of planting. Plants to be materially undamaged, sturdy, healthy and vigorous specimen, of good shape and without elongated shoots, grown in a suitable environment and hardened off and free from pests, diseases, discoloration, weeds and physiological disorders. Plant standard to BS 3936 'Nursery stock'. Name, forms, dimensions, provenance and other criteria as scheduled and defined in the National Plant Specification. Plant handling shall be in accordance with HTA 'Handling and establishing landscape plants'.

Turf
Turf to be healthy, vigorous grass sward, free from the visible effects of pests, weeds and disease to BS 3969 'Recommendations for Turf for general purposes'. Turf shall be laid in accordance with BS 4428 'Code of Practice for general landscape operations'.

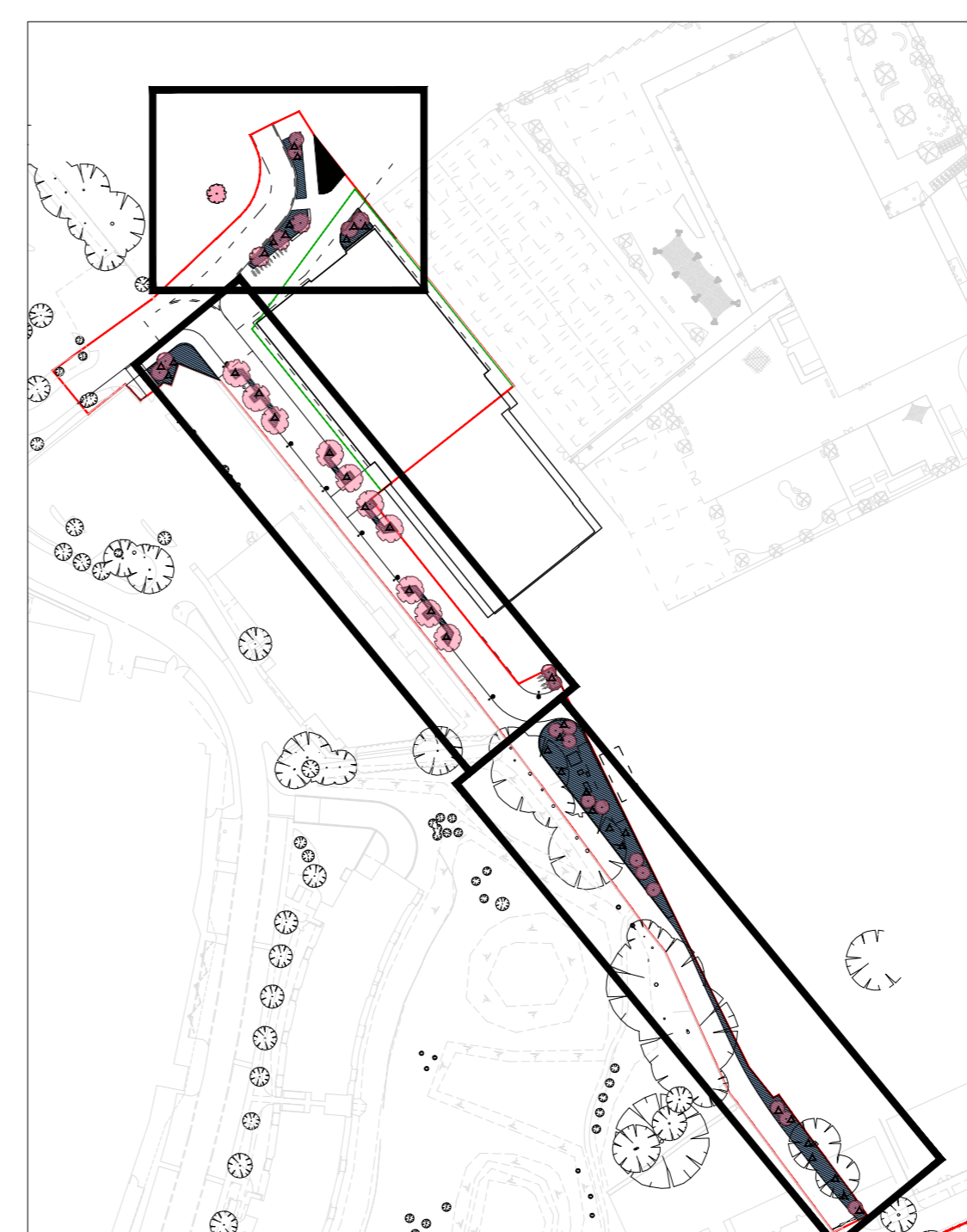
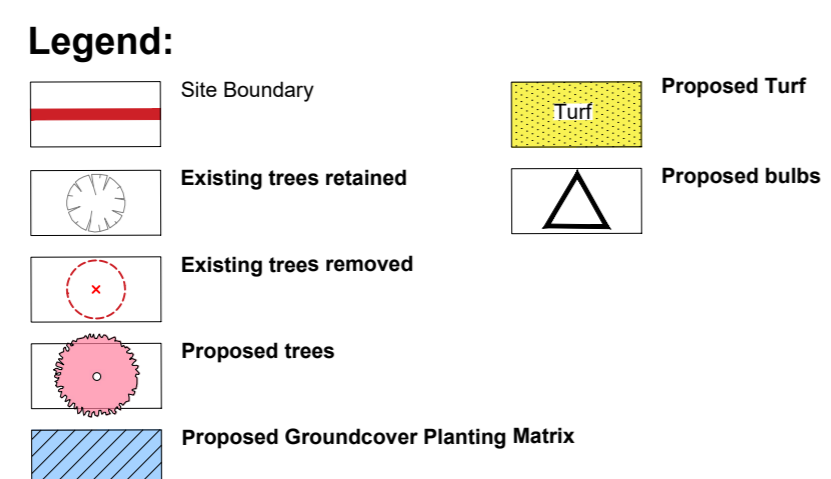
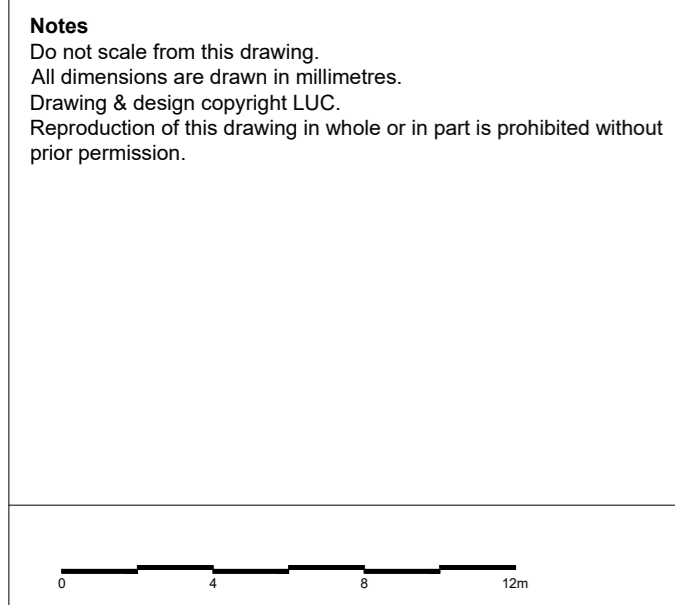
Groundcover
Beds to be cultivated to 300mm depth before planting decompact rooting zone. After planting beds are to be raked to a friable beds suitable for seeding the wildflower mix into.

Trees
All tree planting to be undertaken in accordance with BS 5837 'Trees in relation to design, demolition and construction. Recommendations' and BS 8545 'Trees from nursery to independence in the landscape. Recommendations'.
For detail of tree pit including root barrier, guying system and irrigation pipe refer to LUC drawing 10743-LD-DET-610. Trees in hard landscape to be planted in load bearing growing medium as specified with tree grilles (Fumilubes - Portman steel).
Semi-mature trees to be root prepared and transplanted to BS 4043 'Recommendations for transplanting root-balled trees'.
All standard trees to be secured with 2 no. stake. Stakes to be 50mm diameter softwood, peeled chestnut, larch or oak, straight, free from projections and large or edge knots and with pointed lower end with nails to BS 1202.
All multistem tree to be secured using Platypus rootball anchoring kits.
Backfill with ameliorant (1 m³ per 10 m² of topsoil) and fertilizer as specified.
Mulch with Melcourt Mini Pine mulch. Finished level of mulch to be 70 mm below adjacent grassed or paved areas.

MAINTENANCE
Contractor to maintain planting throughout duration of 12 month Defects Liability Period. Health and vigour of all planting stock to be maintained throughout with regular watering, pruning etc. Failed planting stock to be replaced as required.

Trees
Newly planted trees across the site will need to be watered regularly by hand during establishment i.e. for 3 years after planting.
Soil around the base of trees in grass will be kept clear of weeds.
Stakes/ties/ guys will be inspected and maintained in good order, adjusted and repaired where necessary to prevent rubbing of bark and removed when no longer required.
Trees will be visually inspected on routine maintenance visits for damage and general safety and security issues. Damaged branches will be removed from both tree and ground promptly to minimise damage to the tree and danger/obstruction to users of the site.
For newly planted trees formative pruning work will be carried out as required and as appropriate for the species to remove branches overhanging or obstructing access and to maintain the form and health of the tree. All pruning to be carried out by a Member of the Arboricultural Association and in accordance with BS 7370 'Grounds maintenance. Recommendations for maintenance of soft landscape'.

Wildflower
Sowing
Seed is to be sown in the next suitable growing season either autumn or spring. The seed would be evenly surface sown and rolled in. Where seed is to be sown within groundcover planting, the ground shall be raked to provide a even friable surface to seed onto.
Aftercare
First year management and subsequent management once established
This meadow mixture requires little maintenance however to keep it looking presentable a mid-winter cut to remove any arisings and dig out or spot treat any perennial weeds such as nettles, docks and brambles.



LUC LUC London
43 Chalton Street, London, NW1 1JD
+44 (0)20 7383 5784
london@landuse.co.uk
www.landuse.co.uk

Project
Richmond College
STEM / College Phase 2

Client
Atkins

Scale @A1
1:200

Status
for Planning

Drawing Title
Soft Landscape Plan

Job Nr
6377

Drawing Nr
LD-PLN-460

Issue