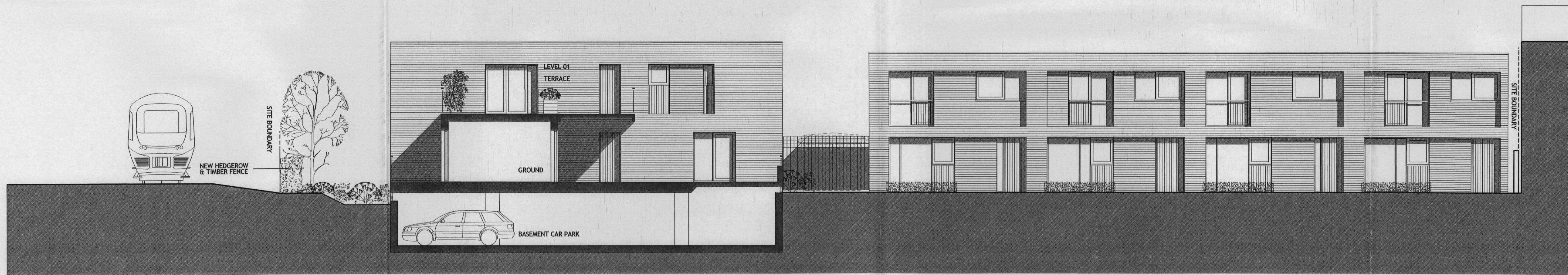


06/3090/ FUL

RECEIVED  
10 NOV 2006  
PLANNING



WEST ELEVATION



SECTION CC

**MATERIALS**

- WALLS - BUFF STOCK FACING BRICK TO MATCH EXISTING
- STAIR CORES - GREY FINISHED ALUMINIUM FRAMED GLAZING
- LIFT 'TOWERS' - ZINC CLADDING
- ROOFS - SLATE TILING, ZINC CLADDING, LEAD COLOURED SHEET, EXTENSIVE GREEN ROOF - TO EXISTING AND NEW BUILD
- NEW DORMERS TO EXISTING BUILDING TO BE LEAD COLOURED SHEET
- WINDOWS - GREY FINISHED ALUMINIUM
- DOORS - TIMBER FINISH
- BALCONIES - GALVANISED METAL RAILINGS & SUPPORTS, TIMBER HANDRAILS & TIMBER SIDE PANELS TO BALCONIES ON NORTH FACADE
- ACCESS BALCONIES - GALVANISED METAL RAILINGS & SUPPORT CHANNELS, TIMBER HANDRAILS & TIMBER DECKING
- RAINWATER GOODS - GALVANISED METAL
- OTHER METALWORK - GALVANISED METAL

**PLANNING**

HAMILTON ROAD, TWICKENHAM

FOR HAMILTON LOFTS  
WEST ELEVATION & SECTION CC

DATE NOV 06 DRAWN SP CHECKED CR APPROVED CR

JOB NO. 3593  
DRAWING PL43 PI  
SCALE 1:100@A1 REV

ACANTHUS LW ARCHITECTS

ACANTHUS LW ARCHITECTS  
020 8994 2288 fax 020 8747 9001  
Voysey House, Barley Mow Passage, Chiswick London W4 4PH

REVISION BY CHD APVY DATE REVISION P1 PRELIMINARY ISSUE

BY CHD APVY DATE SP CR 07.11.06