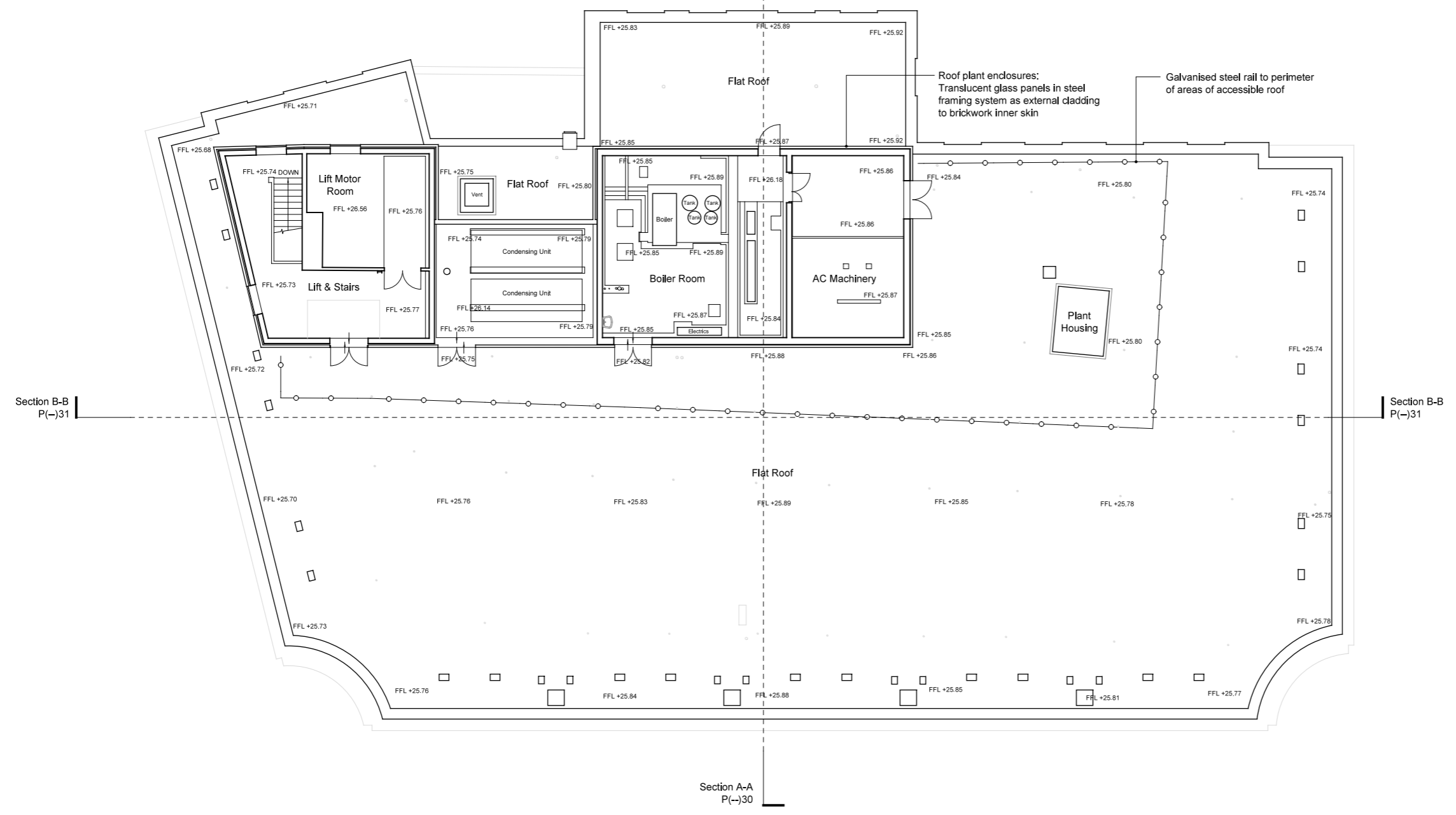
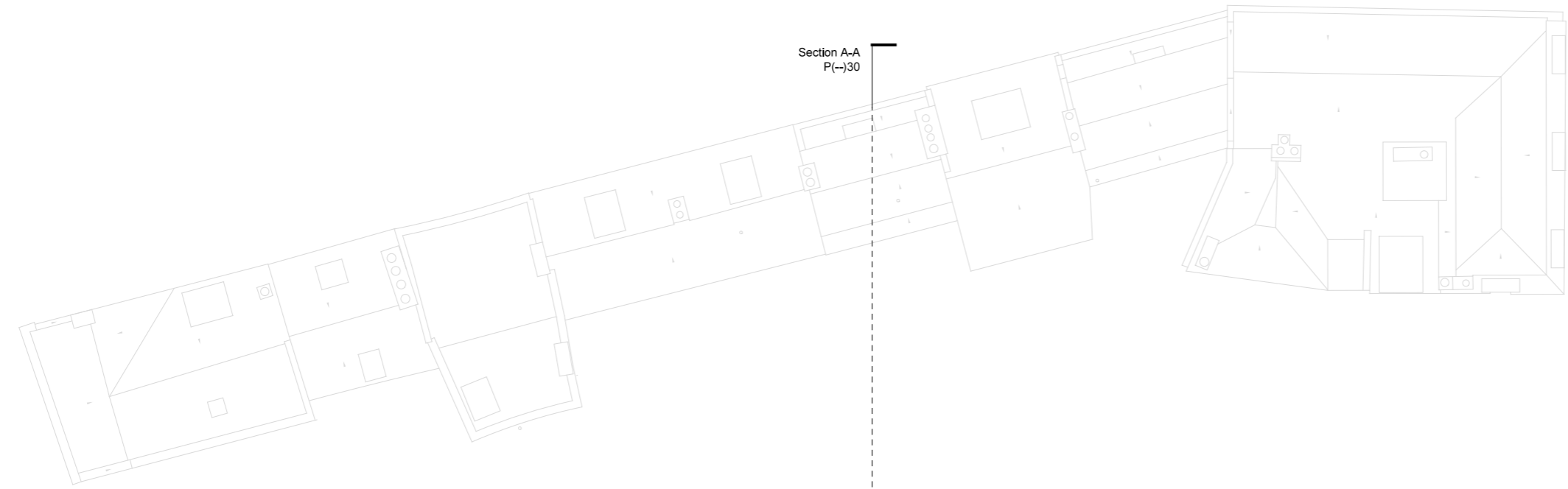


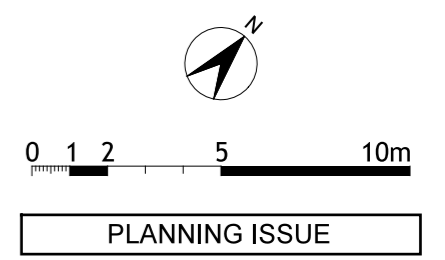
Dimensions are not to be scaled from this drawing.  
 This drawing is based on current available information and should not be relied on as accurate measurements of usable space.  
 This drawing is the property of the Colman Partnership Ltd. and Copyright is reserved by or to any unauthorised persons without the prior consent in writing of the Colman Partnership Ltd.

Rev	Notes	By	Date
P1	Planning Issue	SRH	05/07/19



Roof plant enclosures:  
 Translucent glass panels in steel framing system as external cladding to brickwork inner skin

Galvanised steel rail to perimeter of areas of accessible roof



**colman architects**

Project  
 75-81 George Street  
 Richmond, TW9 1HA

Title  
 Existing Roof Plan

Scale 1:200 @ A3	1:100 @ A1	Date 04/07/2019
Drawn by TD	Checked by Proj. Arch.	Checked By Manager
Drawing No. 1720/P(-)14	Revision P1	

The Colman Partnership Limited  
 27 Harcourt Street  
 London  
 W1H 4HP

Telephone: 020 7535 2040  
 Facsimile : 020 7535 2041  
 email: projects@colmanarchitects.co.uk

[www.colmanarchitects.co.uk](http://www.colmanarchitects.co.uk)

CAD Filename: \$FILES  
 \$DATE\$