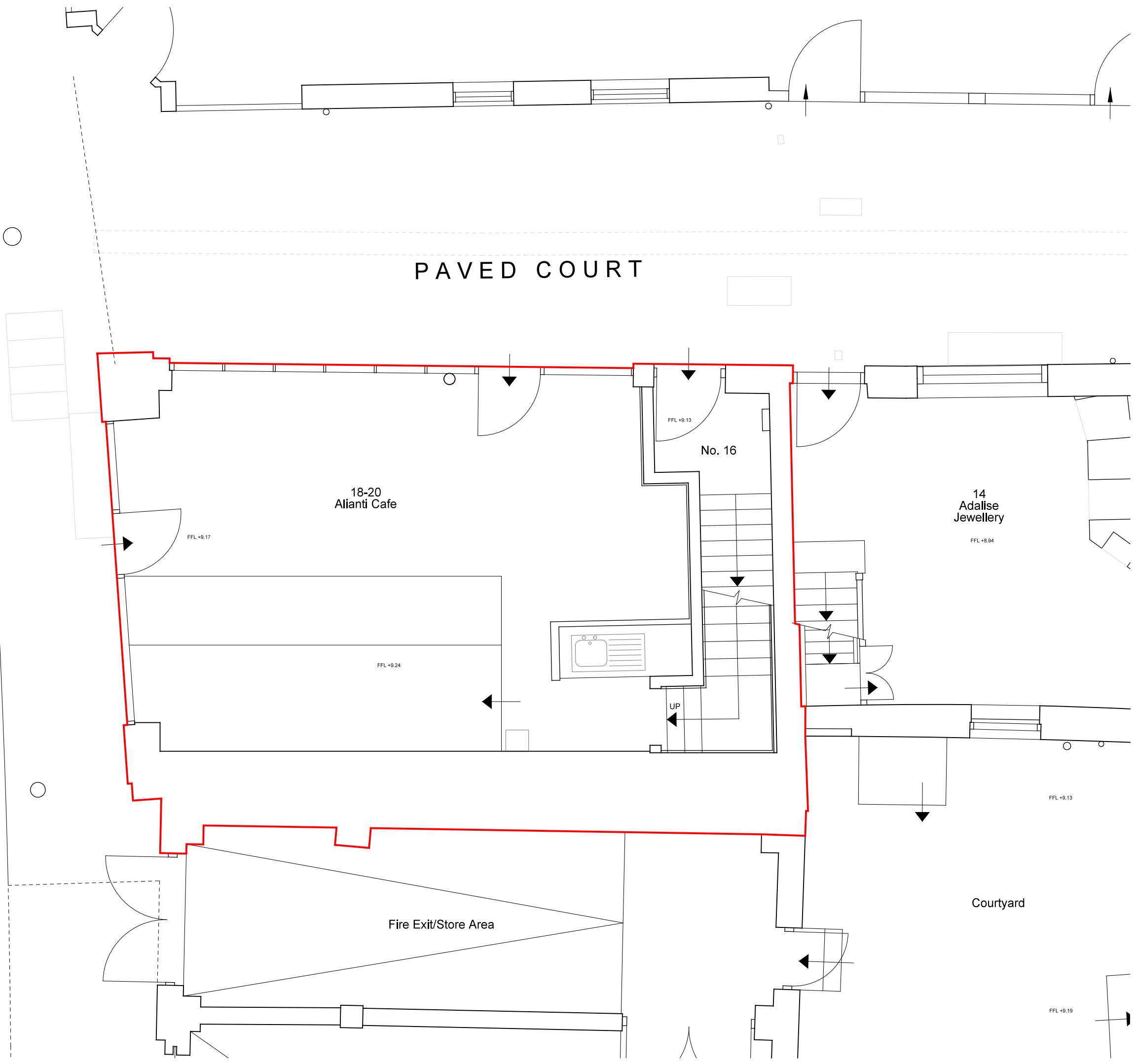


Dimensions are not to be scaled from this drawing.  
 This drawing is based on current available information and should not be relied on as accurate measurements of usable space.  
 This drawing is the property of the Colman Partnership Ltd. and Copyright is reserved by them. The drawing is issued on condition that it is not copied or disclosed by or to any unauthorised persons without the prior consent in writing of the Colman Partnership Ltd.

Rev	Notes	By	Date
P1	Planning Issue	SRH	04/07/19

KING STREET

PAVED COURT



Key  
 ——— Listed Building Consent Application Boundary



PLANNING ISSUE  
 0 1 2m

**colman architects**

Project  
 75-81 George Street  
 Richmond, TW9 1HA

Title  
 Existing Ground Floor Plan  
 16 Paved Court

Scale	Date
1:50 @ A3	04/07/2019

Drawn by	Checked by Proj. Arch.	Checked By Manager
JB		

Drawing No.	Revision
1720/P(-)40	P1

The Colman Partnership Limited  
 27 Harcourt Street  
 London  
 W1H 4HP

Telephone: 020 7535 2040  
 Facsimile : 020 7535 2041  
 email: projects@colmanarchitects.co.uk

[www.colmanarchitects.co.uk](http://www.colmanarchitects.co.uk)

CAD Filename: R:\ICP\_Jobs\1720 - HOF, 75 - 81 George Street, Richmond, London\2 SHTS\PI-(-)40.dgn  
 11/07/19