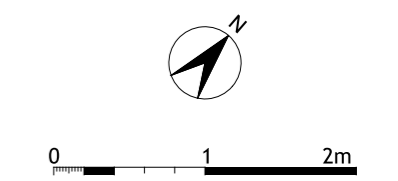
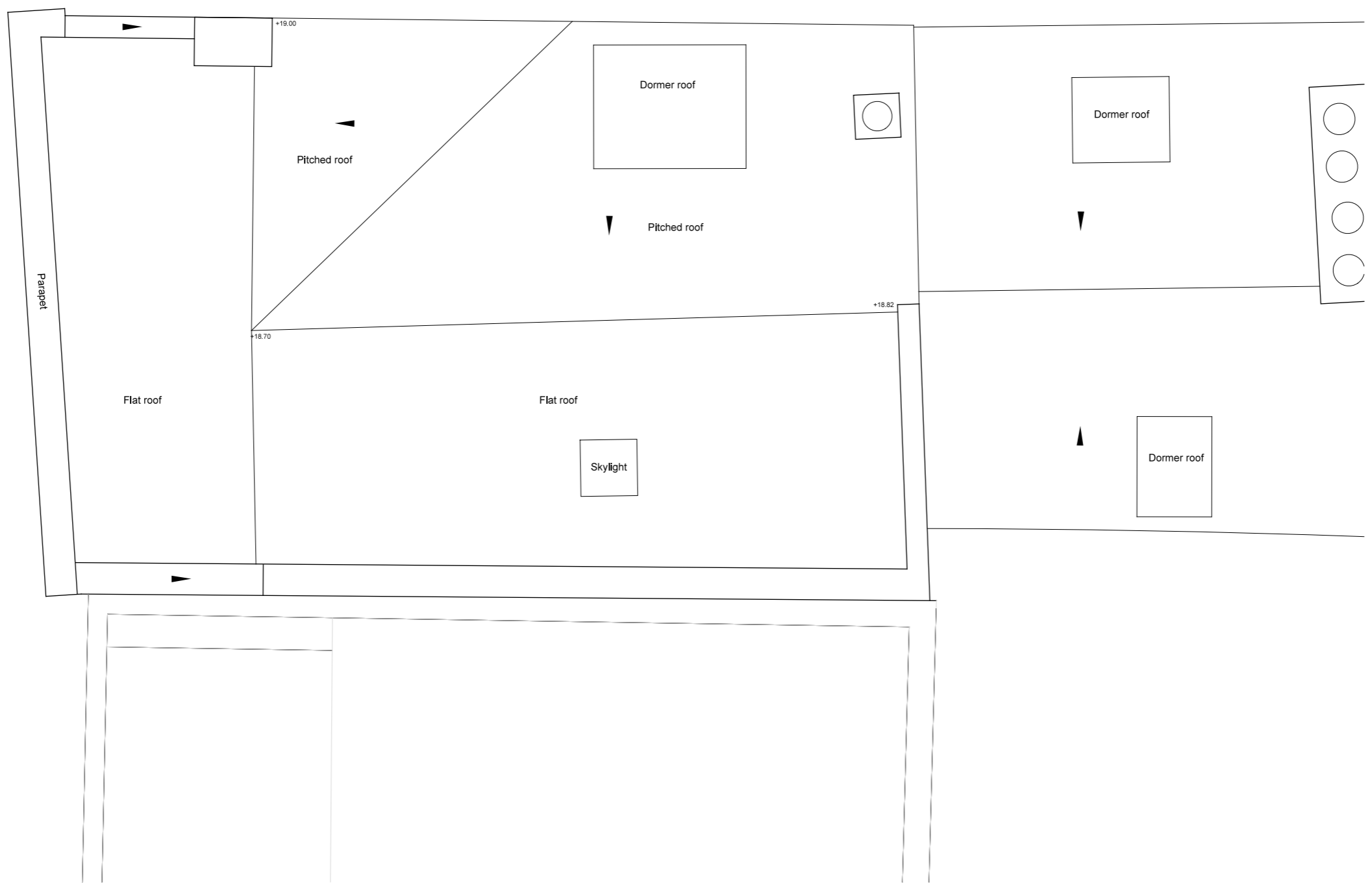
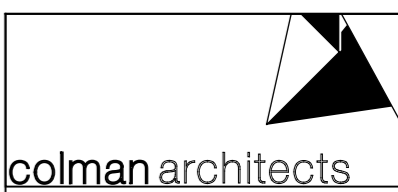


Dimensions are not to be scaled from this drawing.
 This drawing is based on current available information and should not be relied on as accurate measurements of usable space.
 This drawing is the property of the Colman Partnership Ltd. and Copyright is reserved by them. The drawing is issued on condition that it is not copied or disclosed by or to any unauthorised persons without the prior consent in writing of the Colman Partnership Ltd.

Rev	Notes	By	Date
P1	Planning Issue	SRH	05/07/19



PLANNING ISSUE



Project
 75-81 George Street
 Richmond, TW9 1HA

Title
 Existing Roof Plan
 16 Paved Court

Scale	Date
1:50 @ A3	05/07/2019
1:25 @ A1	
Drawn by JB	Checked By Manager
Checked by Proj. Arch.	
Drawing No. 1720/P(-)43	Revision P1

The Colman Partnership Limited
 27 Harcourt Street
 London
 W1H 4HP

Telephone: 020 7535 2040
 Facsimile : 020 7535 2041
 email: projects@colmanarchitects.co.uk

www.colmanarchitects.co.uk

CAD Filename: \$FILES
 \$DATE\$