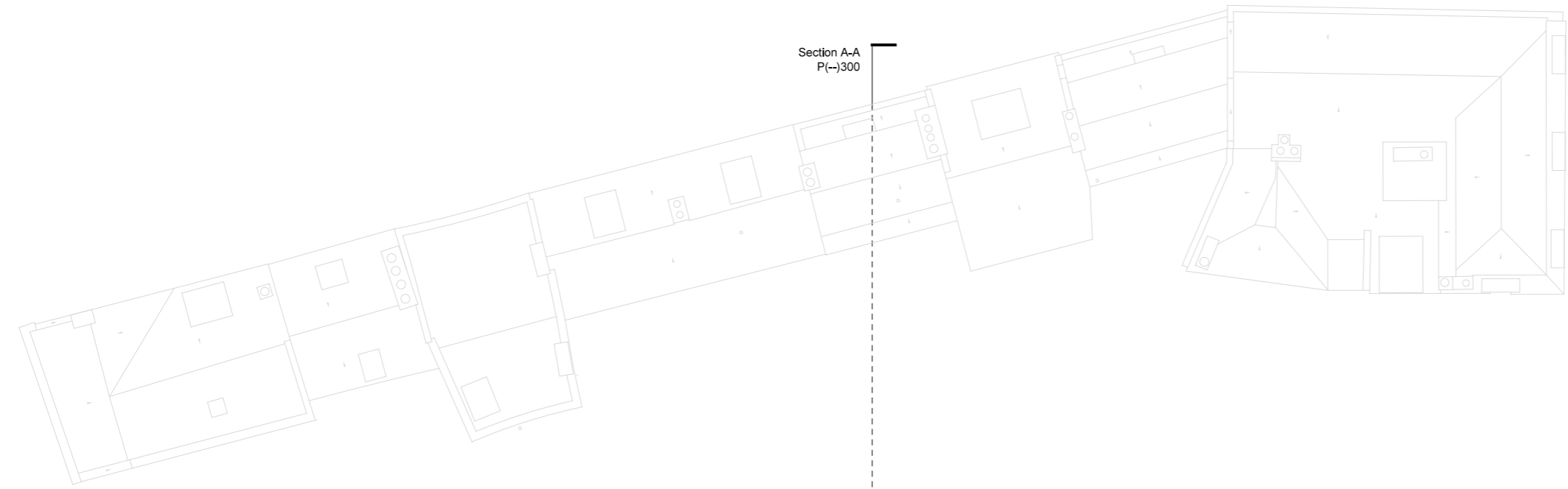


Dimensions are not to be scaled from this drawing.
 This drawing is based on current available information and should not be relied on as accurate measurements of usable space.
 This drawing is the property of the Colman Partnership Ltd. and Copyright is reserved by them. The drawing is issued on condition that it is not copied or disclosed by or to any unauthorised persons without the prior consent in writing of the Colman Partnership Ltd.

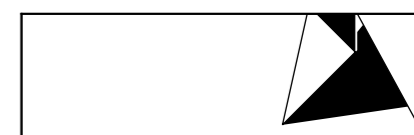
Rev	Notes	By	Date
P1	Planning Issue	DLa	05/07/19



Key
 - - - - - Line of Potential Unit Division

0 1 2 5 10m

PLANNING ISSUE



colman architects

Project
 75-81 George Street
 Richmond, TW9 1HA

Title
 Proposed Fourth Floor Plan

Scale 1:200 @ A3	1:100 @ A1	Date 29/06/2017
Drawn by TD	Checked by Proj. Arch.	Checked By Manager
Drawing No. 1720/P(-)114	Revision P1	

The Colman Partnership Limited
 27 Harcourt Street
 London W1H 4HP
 Telephone: 020 7535 2040
 Facsimile: 020 7535 2041
 email: projects@colmanarchitects.co.uk

www.colmanarchitects.co.uk
 CAD Filename: \$FILES\$.S\$DATE\$

Section B-B
P(-)301

Section B-B
P(-)301

Section A-A
P(-)300