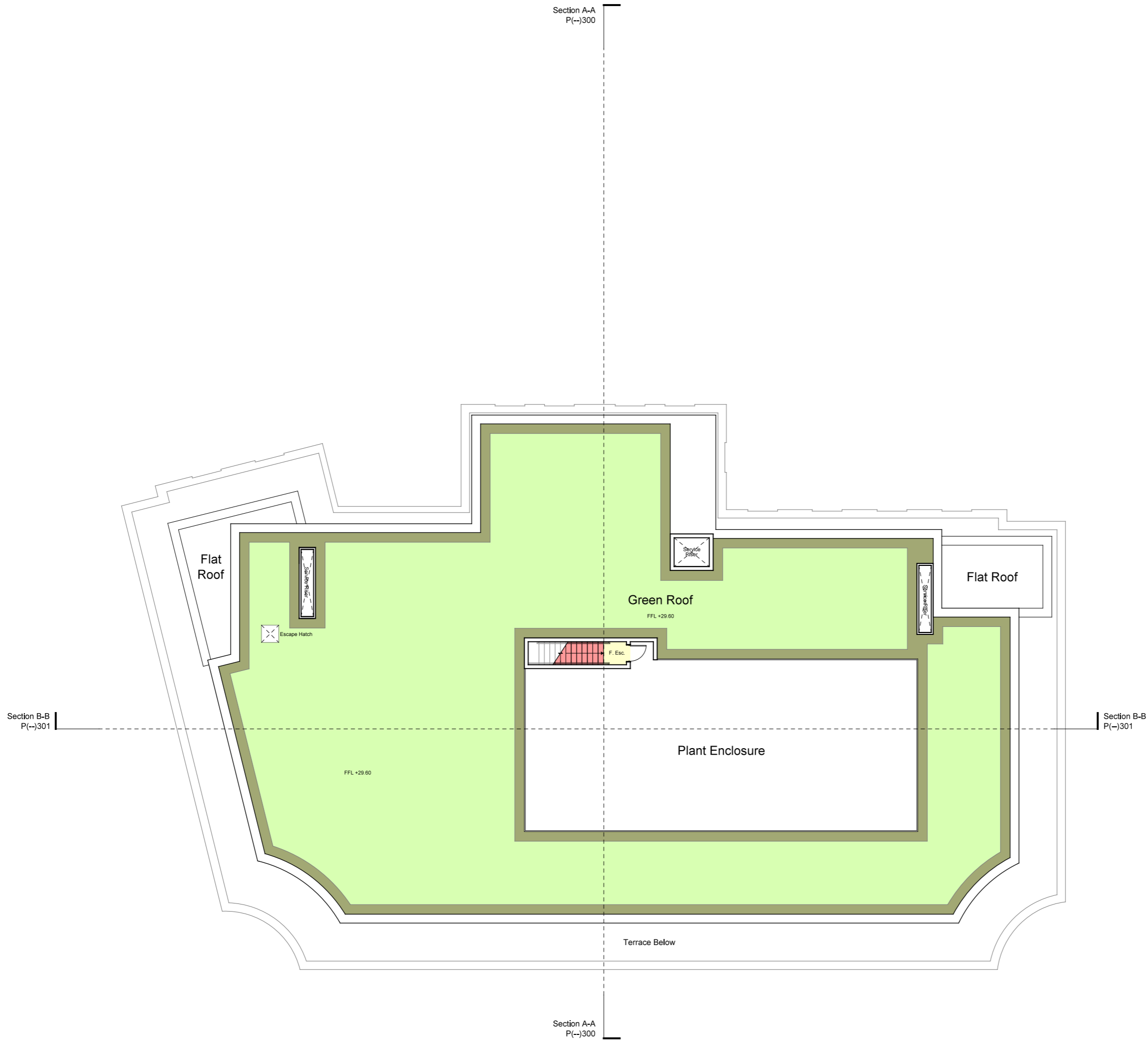



Dimensions are not to be scaled from this drawing.
 This drawing is based on current available information and should not be relied on as accurate measurements of usable space.
 This drawing is the property of the Colman Partnership Ltd. and Copyright is reserved by them. The drawing is issued on condition that it is not copied or disclosed by or to any unauthorised persons without the prior consent in writing of the Colman Partnership Ltd.

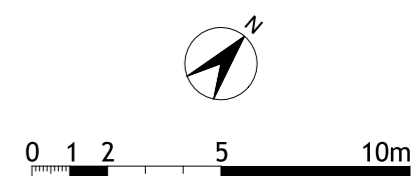
Rev	Notes	By	Date
P1	Planning Issue	DLa	05/07/19



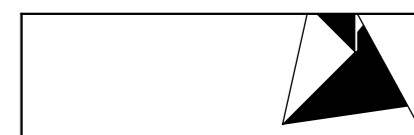
Key

 Area of Green Roof 610m² (65%)
 inc. Gravel Perimeter

Total new Roof Area inc. Parapets equates to 930m²



PLANNING ISSUE



colman architects

Project
 75-81 George Street
 Richmond, TW9 1HA

Title
 Proposed Roof Plan

Scale 1:200 @ A3	1:100 @ A1	Date 29/06/2017
Drawn by TD	Checked by Proj. Arch.	Checked By Manager
Drawing No. 1720/P(-)115	Revision P1	

The Colman Partnership Limited
 27 Harcourt Street
 London
 W1H 4HP

Telephone: 020 7535 2040
 Facsimile : 020 7535 2041
 email: projects@colmanarchitects.co.uk

www.colmanarchitects.co.uk

CAD Filename: \$FILES
 \$DATE\$