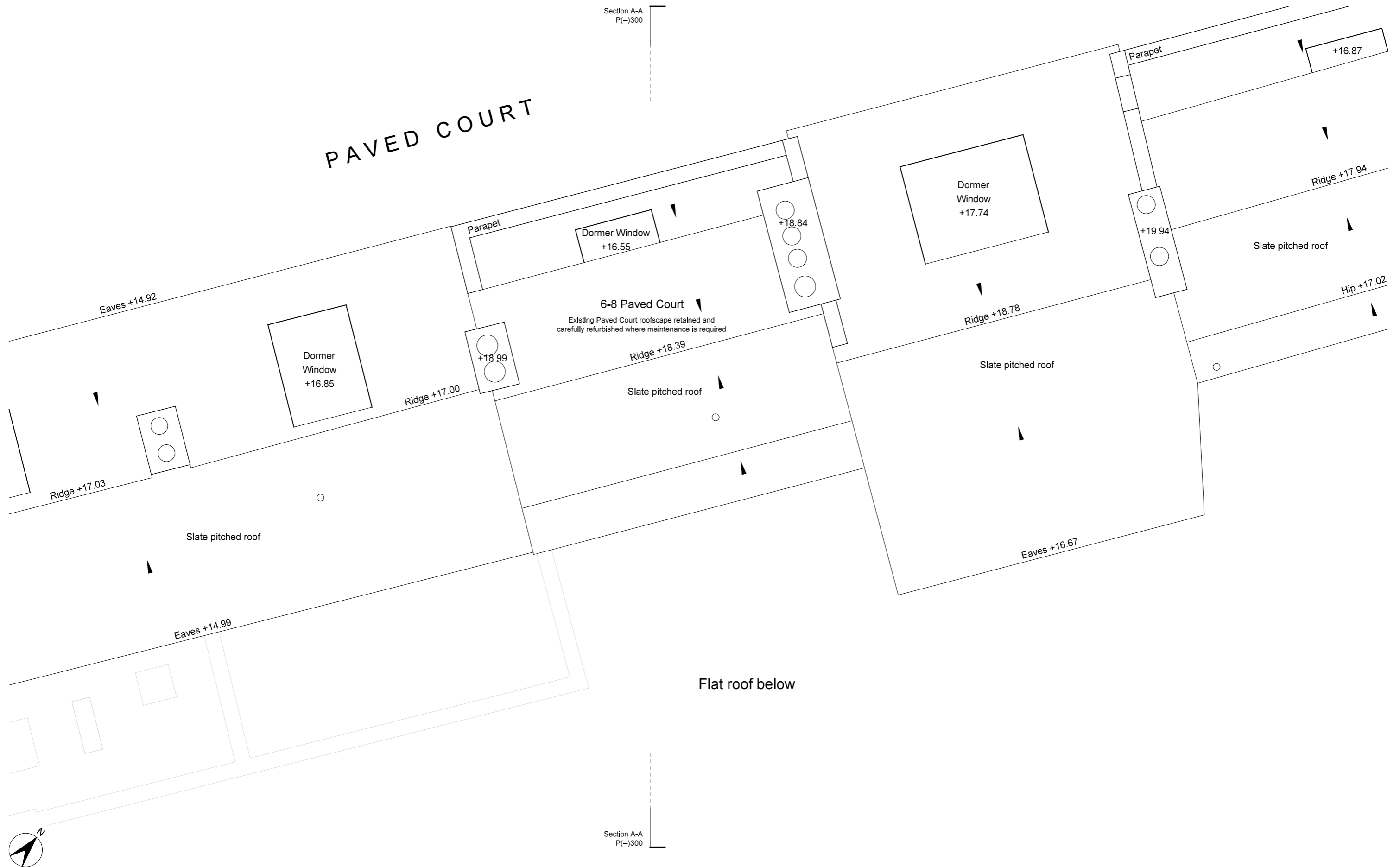


PAVED COURT



6-8 Paved Court
Existing Paved Court roofscape retained and carefully refurbished where maintenance is required

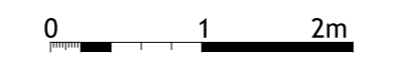


PLANNING ISSUE



| | | | |
|--|------------------------|---|--------------------|
| Project 75-81 George Street Richmond, TW9 1HA | | Scale 1:50 @ A3 | Date 03/04/2019 |
| Drawn by tes | Checked by Proj. Arch. | Checked By Manager | |
| Drawing No. 1720/P(--)-119 | Revision P1 | | |
| The Colman Partnership Limited 27 Harcourt Street London W1H 4HP | | Telephone: 020 7535 2040 Facsimile : 020 7535 2041 email: projects@colmanarchitects.co.uk | |
| www.colmanarchitects.co.uk | | | |

Dimensions are not to be scaled from this drawing.
This drawing is based on current available information and should not be relied on as accurate measurements of usable space.
This drawing is the property of the Colman Partnership Ltd. and Copyright is reserved by them. The drawing is issued on condition that it is not copied or disclosed by or to any unauthorised persons without the prior consent in writing of the Colman Partnership Ltd.



| Rev | Notes | By | Date |
|-----|----------------|-----|----------|
| P1 | Planning Issue | DLa | 05/07/19 |