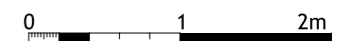
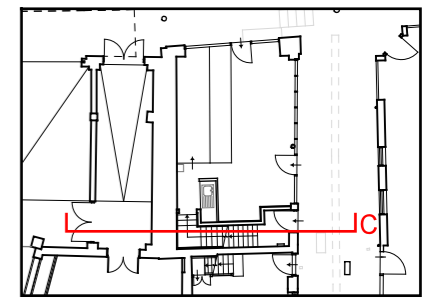
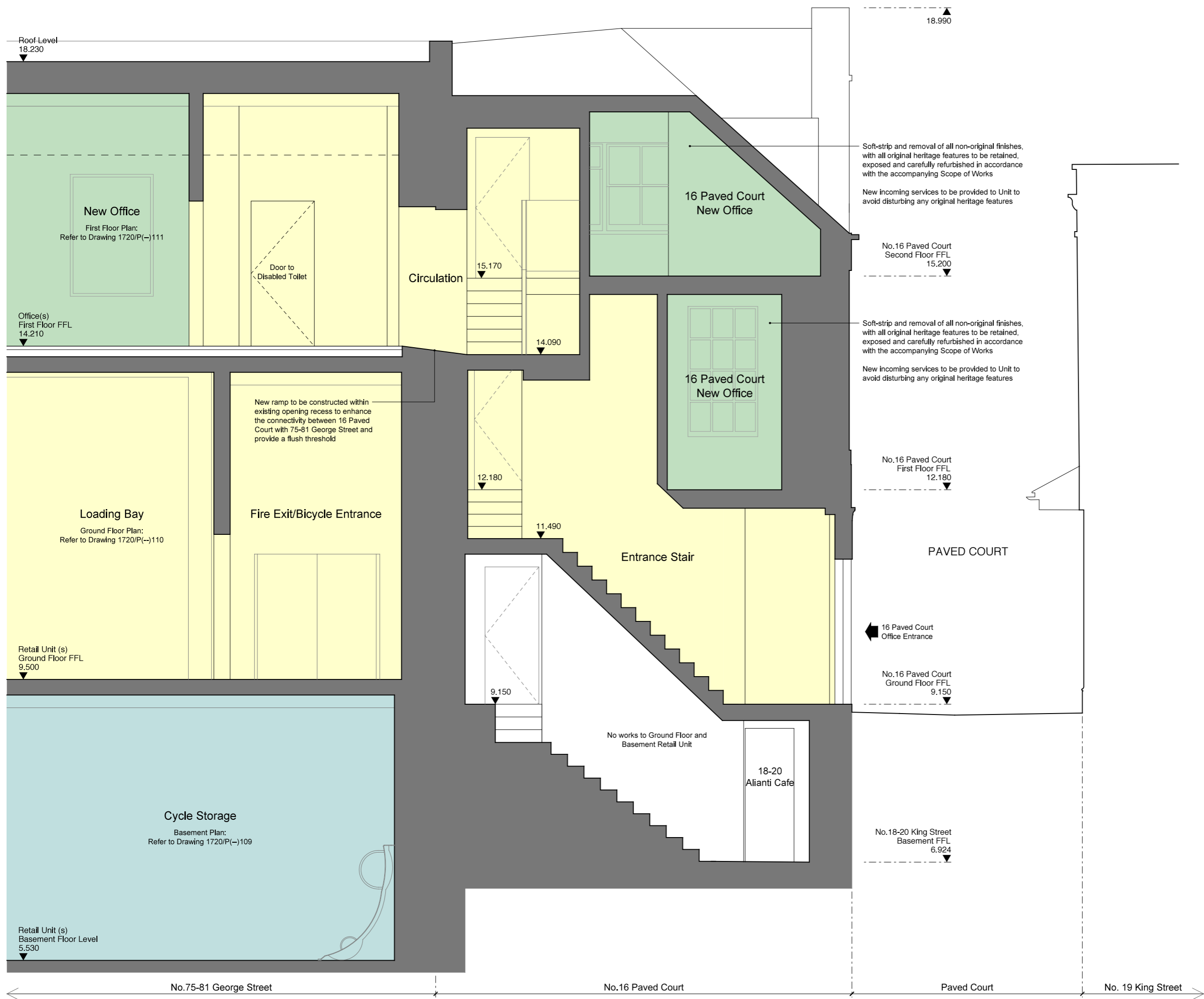
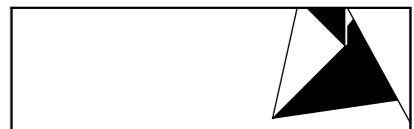


Dimensions are not to be scaled from this drawing.
 This drawing is based on current available information and should not be relied on as accurate measurements of usable space.
 This drawing is the property of the Colman Partnership Ltd. and Copyright is reserved by them. The drawing is issued on condition that it is not copied or disclosed by or to any unauthorised persons without the prior consent in writing of the Colman Partnership Ltd.

Rev	Notes	By	Date
P1	Planning Issue	DLa	05/07/19



PLANNING ISSUE



colman architects

Project
75-81 George Street
Richmond, TW9 1HA

Title
Proposed 16 Paved Court
Part Section C
Connectivity to 75-81 George Street

Scale 1:50 @ A3	Date 25/04/2019
Drawn by JB	Checked by Proj. Arch. Checked By Manager
Drawing No. 1720/P(-)611	Revision P1

The Colman Partnership Limited
27 Harcourt Street
London
W1H 4HP
Telephone: 020 7535 2040
Facsimile : 020 7535 2041
email: projects@colmanarchitects.co.uk

www.colmanarchitects.co.uk