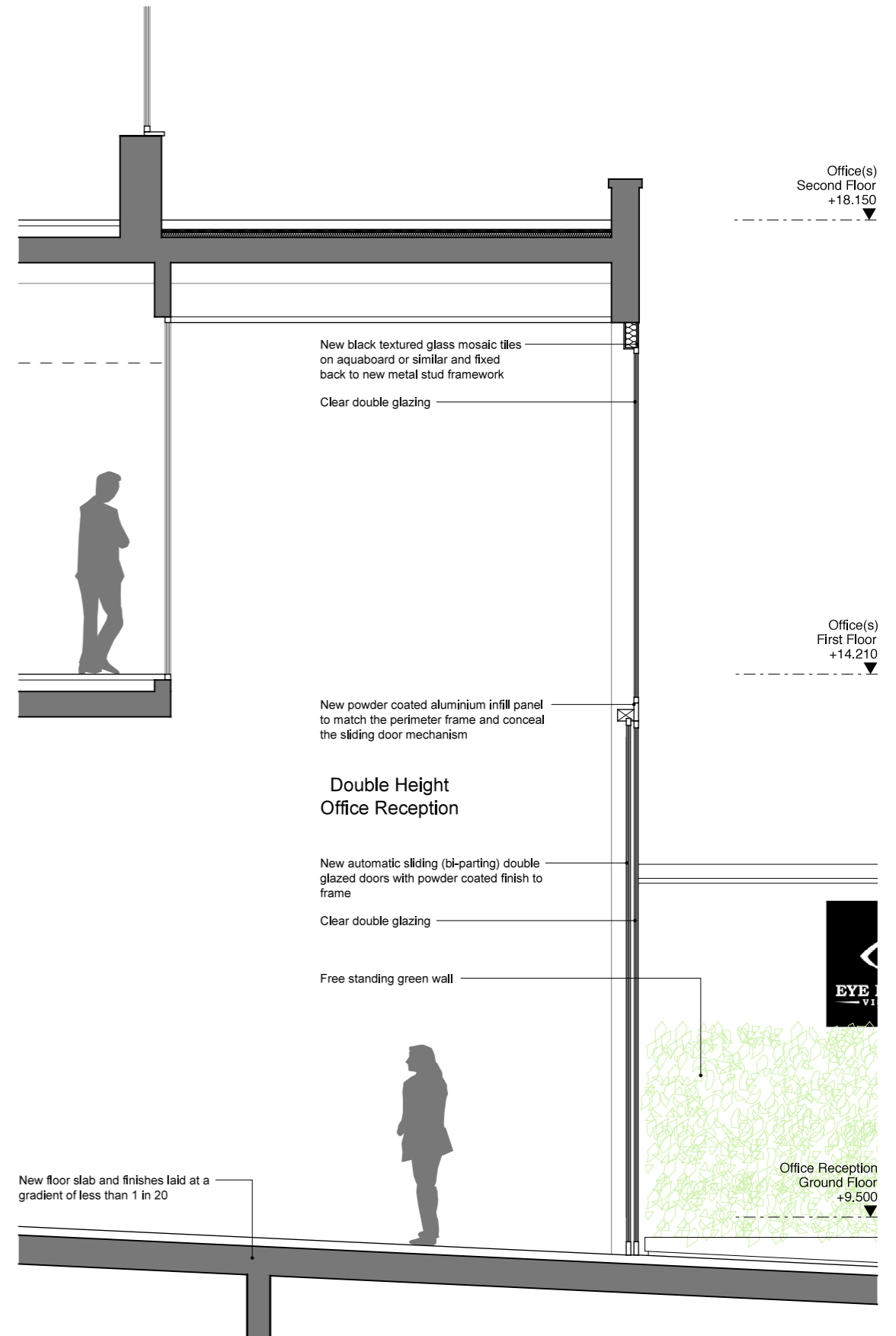


01 Golden Court Office Entrance
Elevation @ 1:50

- New automatic sliding (bi-parting) double glazed doors with powder coated finish to frame
- New floor slab and finishes laid at a gradient of less than 1 in 20
- New paving flags to match existing Golden Court floor finishes
- Free standing green wall
- New granite clad plinth to be installed at the base of the portland stone plaster



02 Golden Court Office Entrance
Section @ 1:50

PLANNING ISSUE



Project
75-81 George Street
Richmond, TW9 1HA

Title
Proposed Golden Court
Office Entrance

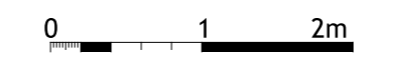
Scale 1:50 @ A3	Date 01/02/2019
Drawn by DLA	Checked By Proj. Arch. Checked By Manager
Drawing No. 1720/P(21)01	Revision P1

The Colman Partnership Limited
27 Harcourt Street
London
W1H 4HP
Telephone: 020 7535 2040
Facsimile: 020 7535 2041
email: projects@colmanarchitects.co.uk

www.colmanarchitects.co.uk

CAD Filename: \$FILES
SDATES

Dimensions are not to be scaled from this drawing.
This drawing is based on current available information and should not be relied on as accurate measurements of usable space.
This drawing is the property of the Colman Partnership Ltd. and Copyright is reserved by them. The drawing is issued on condition that it is not copied or disclosed by or to any unauthorised persons without the prior consent in writing of the Colman Partnership Ltd.



Rev	Notes	By	Date
P1	Planning Issue	DLA	05/07/19