



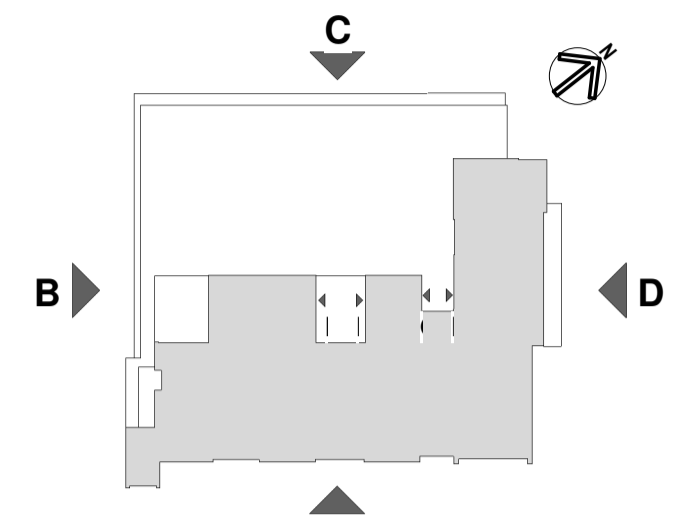
Client's Logo :



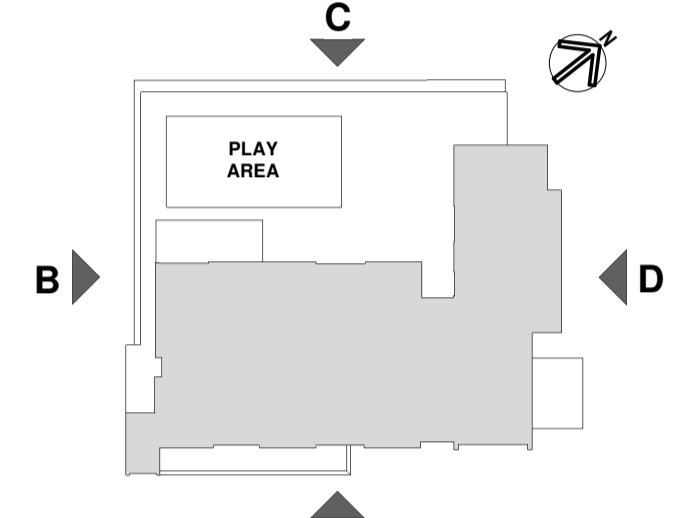
Contractor's Logo:



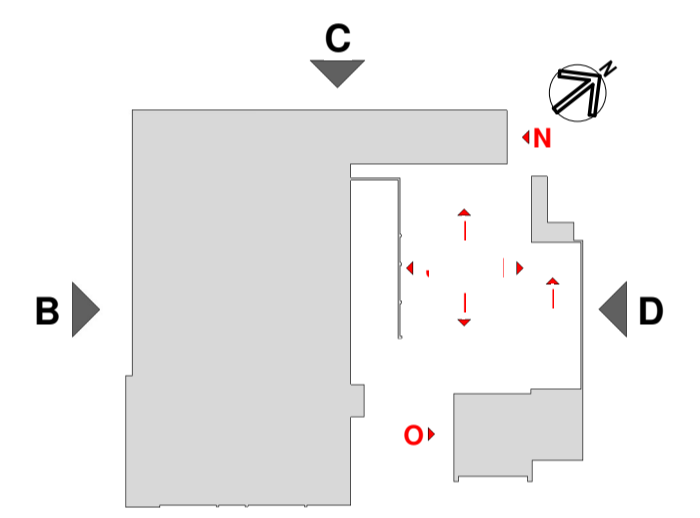
Elevation A
Scale: 1 : 100



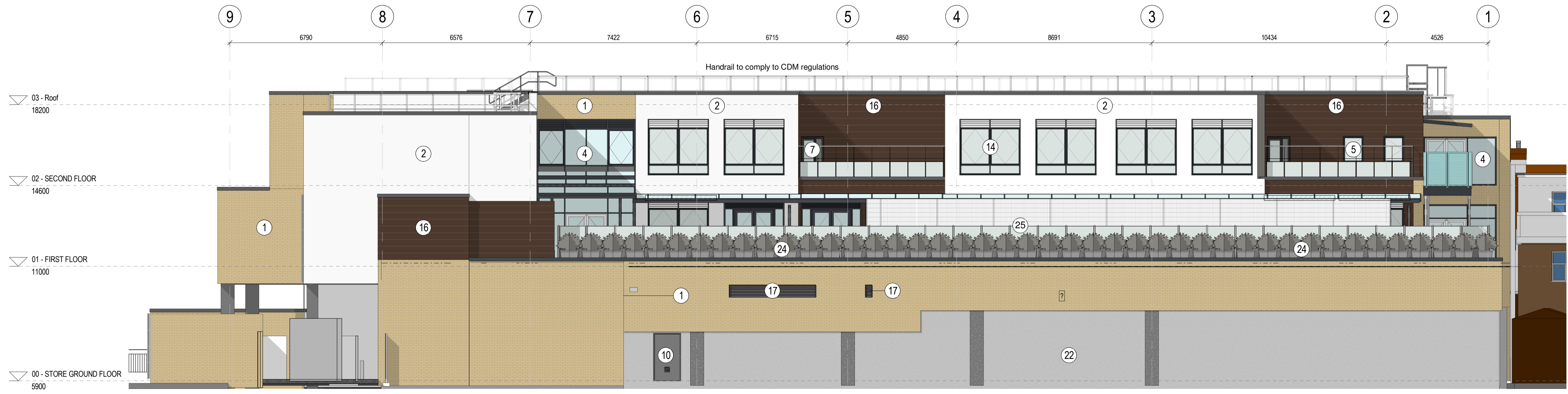
KEY FOR SECOND FLOOR



KEY FOR FIRST FLOOR



KEY FOR GROUND FLOOR



Elevation C
Scale: 1 : 100

REV	DATE	DESCRIPTION	BY
8	17.09.19	Layout updated in line with Planning dept. requests	ARD
7	05.06.19	Planning Issue	ARD
6	05.03.19	Roof lights omitted; Parapets amended; Canopy added to EXT walkway	LM
5	12.10.18	General update	TN
4	11.09.18	Construction Issue, Lidl signage added	TNG
3	06.08.16	Roof Balustrade added	GCP

IN CASE OF DOUBT OR DISCREPANCIES PLEASE REFER TO ARCHITECT FOR INSTRUCTIONS.
DRAWING AND SUITABILITY NUMBERS IN ACCORDANCE WITH BS1192:2007.
THIS DRAWING SHOULD NOT BE SCALED.
THIS DRAWING IS COPYRIGHT.

SUITABILITY NUMBER KEY:		DOCUMENTATION - SIGN-OFF	
WIP	50 - Work in Progress*	A	- Fit for construction
SHARED	S1 - Fit for co-ordination**	B	- Fit for construction, with comments
	S2 - Fit for information	C	- Comprehensive revisions needed
	S3 - Fit for internal review and comment	ARCHIVE	AB - As Built
	S4 - Fit for construction approval	FC	- Final Construction
DOCUMENTATION	D1 - Fit for costing		* For internal pre-issue usage only.
	D2 - Fit for tender		** For model file usage only.
	D3 - Fit for contractor design		
	D4 - Fit for manufacture/procurement		

boyesrees architects
4th Floor, Greyfriars House
Greyfriars Road, Cardiff CF10 3AL
Tel: 029 2055 8900 Fax: 029 2039 9592
www.boyesrees.co.uk
Registered office: As above Reg No. 295
1683 (England & Wales)

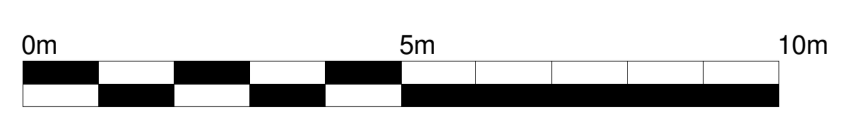
PROJECT TITLE :
Proposed LIDL store on Richmond Road
Twickenham

DRAWING TITLE :
GA Elevations 01 of 05

DRAWN BY : GCP	SCALE : As indicated @ A1
JOB NO : 4862	DATE : 02/12/18

SUITABILITY : S4	REVISION : 8					
PROJECT ORIGIN : 4862	BRA	VOLUME : 00	LEVEL : ZZ	TYPE : DR	DISCIP : A	NUMBER : 0201

- LEGEND:
- | | |
|--|---|
| 1. Facing brick Slip system | 14. Windows - glazing frame to be finished in RAL 7024 (Double) |
| 2. Insulated render system - colour and finish White | 15. Masonry brick wall |
| 3. Rainscreen cladding system - RAL 9006 | 16. Timber cladding style cladding |
| 4. Curtain wall - full height glazing, frames to be finished in RAL 7024 | 17. Louvres panels - colour to match window frames |
| 5. Windows - glazing frame to be finished in RAL 7024 (Single) | 18. External sliding door finished in RAL 7024 for School |
| 6. Windows - glazing frame to be finished in RAL 7024 (Double) | 19. External sliding door finished in RAL 7024 for Lidl |
| 7. External glazed door (Single) to be finished in RAL 7024 | 20. Bi-folding door to be finished in RAL 7024 |
| 8. External glazed door (Double) to be finished in RAL 7024 | 21. Lidl store signage |
| 9. Goods delivery door to be finished in RAL 7024 | 22. In-situ concrete wall |
| 10. External steel door (Single) to be finished in RAL 7024 | 23. Green Wall |
| 11. External steel door (Double) to be finished in RAL 7024 | 24. External Planting |
| 12. School signage | 25. Glazed boundary fence |
| 13. Windows - glazing frame to be finished in RAL 7024 (Single) | |



17/09/2019 11:55:29 C:\Users\adelson\Documents\4862_BRA-00-XC-M3-A-090001-RICHMOND LIDL STORE_ adelson.rvt