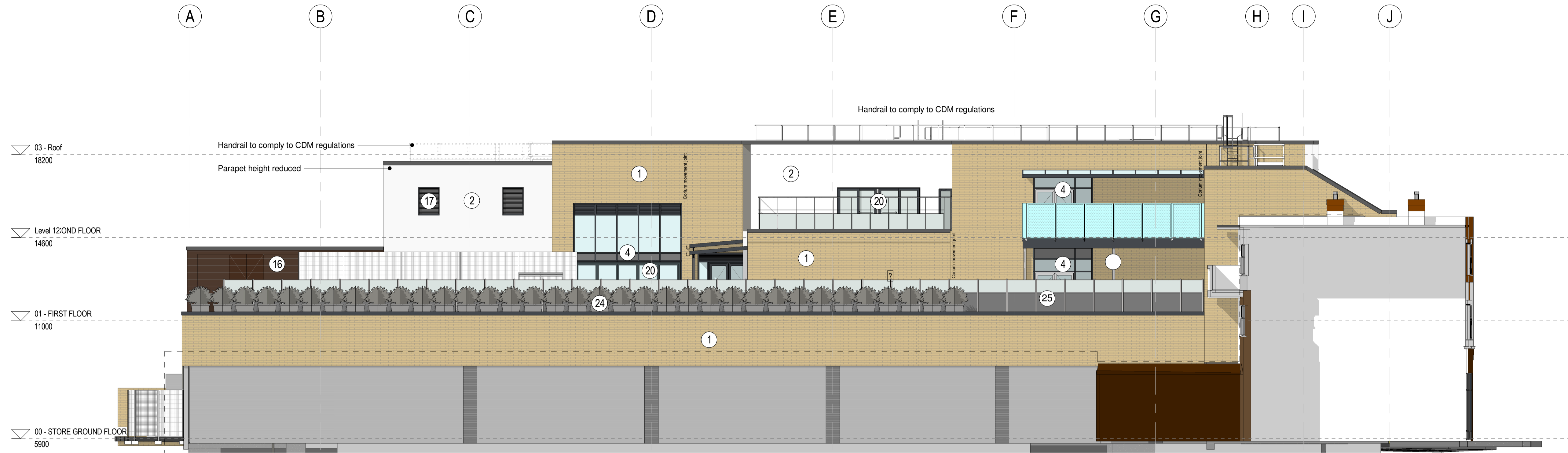




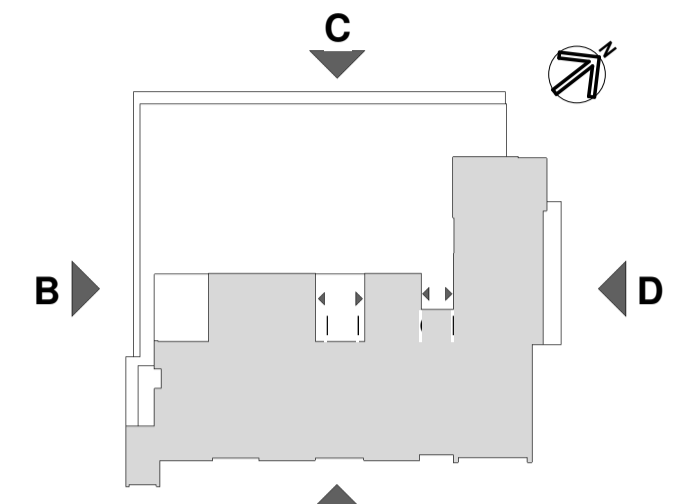
Client's Logo :



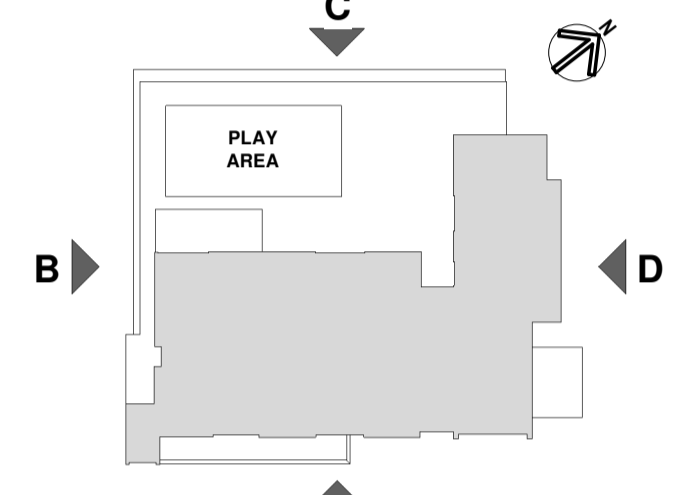
Contractor's Logo:



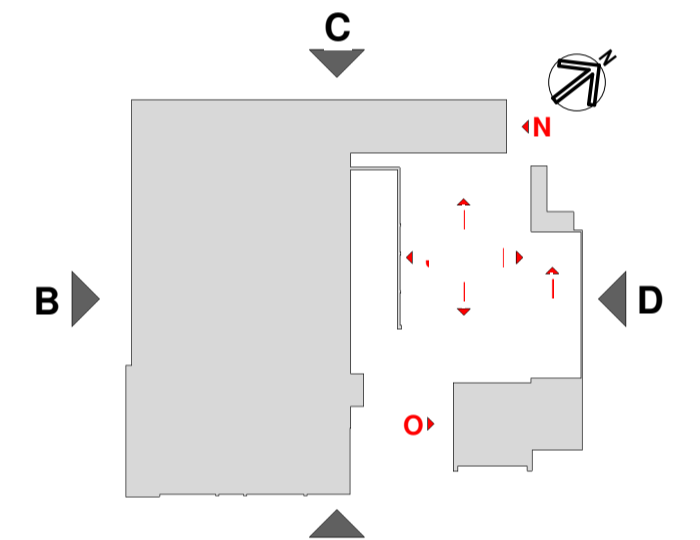
Elevation B  
Scale: 1 : 100



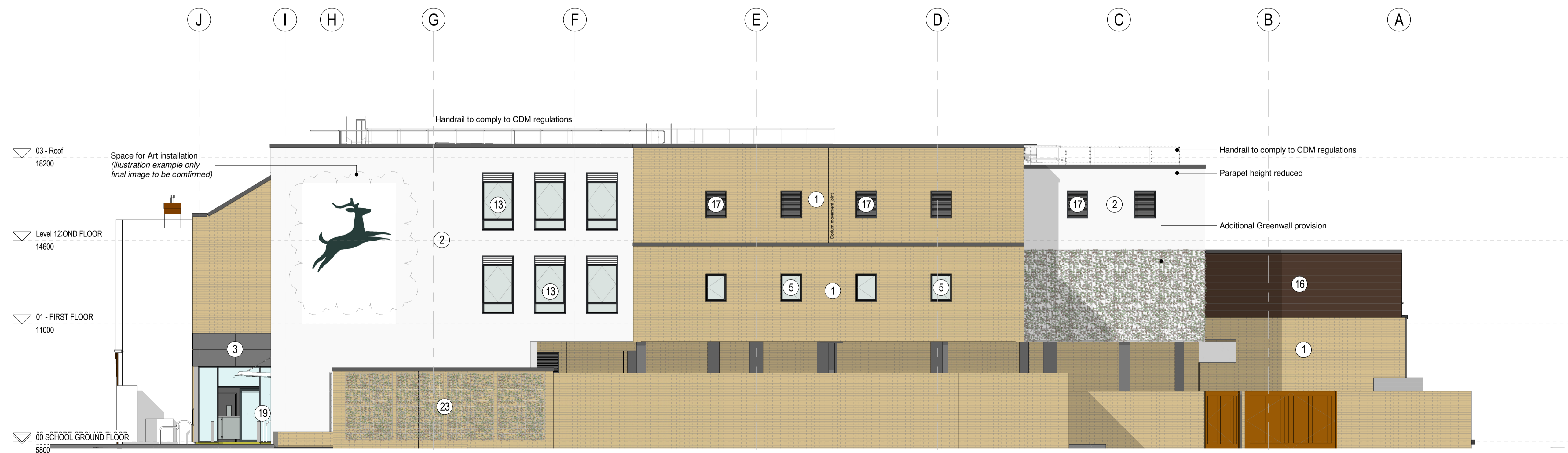
KEY FOR SECOND FLOOR



KEY FOR FIRST FLOOR



KEY FOR GROUND FLOOR



Elevation D  
Scale: 1 : 100

|   |          |                                                                                                                                |     |
|---|----------|--------------------------------------------------------------------------------------------------------------------------------|-----|
| 6 | 17.09.19 | Layout updated in line with Planning dept. requests                                                                            | ARD |
| 5 | 05.06.19 | Planning Issue                                                                                                                 | ARD |
| 4 | 05.03.19 | Roof lights omitted; Parapets amended; Canopy added to EXT walkway                                                             | LM  |
| 3 | 11.09.18 | Construction Issue, walls, window louvres and curtain wall updated in line with current design and Key 22 & 23 added to legend | TNG |

| REV | DATE     | DESCRIPTION                                                                                                                    | BY  |
|-----|----------|--------------------------------------------------------------------------------------------------------------------------------|-----|
| 6   | 17.09.19 | Layout updated in line with Planning dept. requests                                                                            | ARD |
| 5   | 05.06.19 | Planning Issue                                                                                                                 | ARD |
| 4   | 05.03.19 | Roof lights omitted; Parapets amended; Canopy added to EXT walkway                                                             | LM  |
| 3   | 11.09.18 | Construction Issue, walls, window louvres and curtain wall updated in line with current design and Key 22 & 23 added to legend | TNG |

IN CASE OF DOUBT OR DISCREPANCIES PLEASE REFER TO ARCHITECT FOR INSTRUCTIONS. DRAWING AND SUITABILITY NUMBERS IN ACCORDANCE WITH BS1192:2007. THIS DRAWING SHOULD NOT BE SCALED. THIS DRAWING IS COPYRIGHT.

| SUITABILITY NUMBER KEY: |                                          | DOCUMENTATION - SIGN-OFF             |                                       |
|-------------------------|------------------------------------------|--------------------------------------|---------------------------------------|
| WIP                     | S0 - Work in Progress*                   | A                                    | - Fit for construction                |
| SHARED                  | S1 - Fit for co-ordination**             | B                                    | - Fit for construction, with comments |
|                         | S2 - Fit for information                 | C                                    | - Comprehensive revisions needed      |
|                         | S3 - Fit for internal review and comment | ARCHIVE                              |                                       |
|                         | S4 - Fit for construction approval       | AB                                   | - As Built                            |
|                         |                                          | FC                                   | - Final Construction                  |
| DOCUMENTATION:          |                                          | * For internal pre-issue usage only. |                                       |
|                         | D1 - Fit for costing                     | ** For model file usage only.        |                                       |
|                         | D2 - Fit for tender                      |                                      |                                       |
|                         | D3 - Fit for contractor design           |                                      |                                       |
|                         | D4 - Fit for manufacture/procurement     |                                      |                                       |

**boyesrees architects**

4th Floor, Greyfriars House  
Greyfriars Road, Cardiff CF10 3AL  
Tel: 029 2055 8900 Fax: 029 2039 9592  
www.boyesrees.co.uk

Registered office: As above Reg No. 295  
1683 (England & Wales)

PROJECT TITLE :  
Proposed LIDL store on Richmond Road  
Twickenham

DRAWING TITLE :  
GA Elevations 02 of 05

DRAWN BY : GCP      SCALE : As indicated @ A1

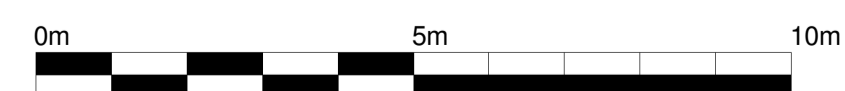
JOB NO : 4862      DATE : 02/12/18

SUITABILITY : S4      REVISION : 6

| PROJECT ORIGIN | VOLUME | LEVEL | TYPE | DISCIP | NUMBER |
|----------------|--------|-------|------|--------|--------|
| 4862           | BRA    | 00    | ZZ   | DR     | A      |
|                |        |       |      |        | 0202   |

LEGEND:

- |                                                                          |                                                                 |
|--------------------------------------------------------------------------|-----------------------------------------------------------------|
| 1. Facing brick Slip system                                              | 14. Windows - glazing frame to be finished in RAL 7024 (Double) |
| 2. Insulated render system - colour and finish White                     | 15. Masonry brick wall                                          |
| 3. Rainscreen cladding system - RAL 9006                                 | 16. Timber cladding style cladding                              |
| 4. Curtain wall - full height glazing, frames to be finished in RAL 7024 | 17. Louvres panels - colour to match window frames              |
| 5. Windows - glazing frame to be finished in RAL 7024 (Single)           | 18. External sliding door finished in RAL 7024 for School       |
| 6. Windows - glazing frame to be finished in RAL 7024(Double)            | 19. External sliding door finished in RAL 7024 for Lidl         |
| 7. External glazed door (Single) to be finished in RAL 7024              | 20. Bi-folding door to be finished in RAL 7024                  |
| 8. External glazed door (Double) to be finished in RAL 7024              | 21. Lidl store signage                                          |
| 9. Goods delivery door to be finished in RAL 7024                        | 22. In-situ concrete wall                                       |
| 10. External steel door (Single) to be finished in RAL 7024              | 23. Green Wall                                                  |
| 11. External steel door (Double) to be finished in RAL 7024              | 24. External Planting                                           |
| 12. School signage                                                       | 25. Glazed boundary fence                                       |
| 13. Windows - glazing frame to be finished in RAL 7024 (Single)          |                                                                 |



17/09/2019 11:58:59 C:\Users\adelson\Documents\4862\_BRA-00-XL-M3-A-090001-RICHMOND LIDL STORE\_ adelson.rvt